



Schnittmuster drucken

1. Öffne die PDF-Datei (z.B. im Acrobat Reader).
2. Wichtig: Stelle in den Druckeigenschaften „tatsächliche Größe“ oder „100%“ ein, sodass der Ausdruck nicht skaliert wird. Drucke diese erste Seite aus und überprüfe die Maße des Kontrollkästchens.
3. Sind alle Einstellungen in Ordnung, kannst du die restlichen Seiten ausdrucken. Du kannst sie farbig oder schwarz-weiss drucken.

Schnittmuster zusammenkleben

1. Schneide jeweils den rechten und den unteren Rand ab.



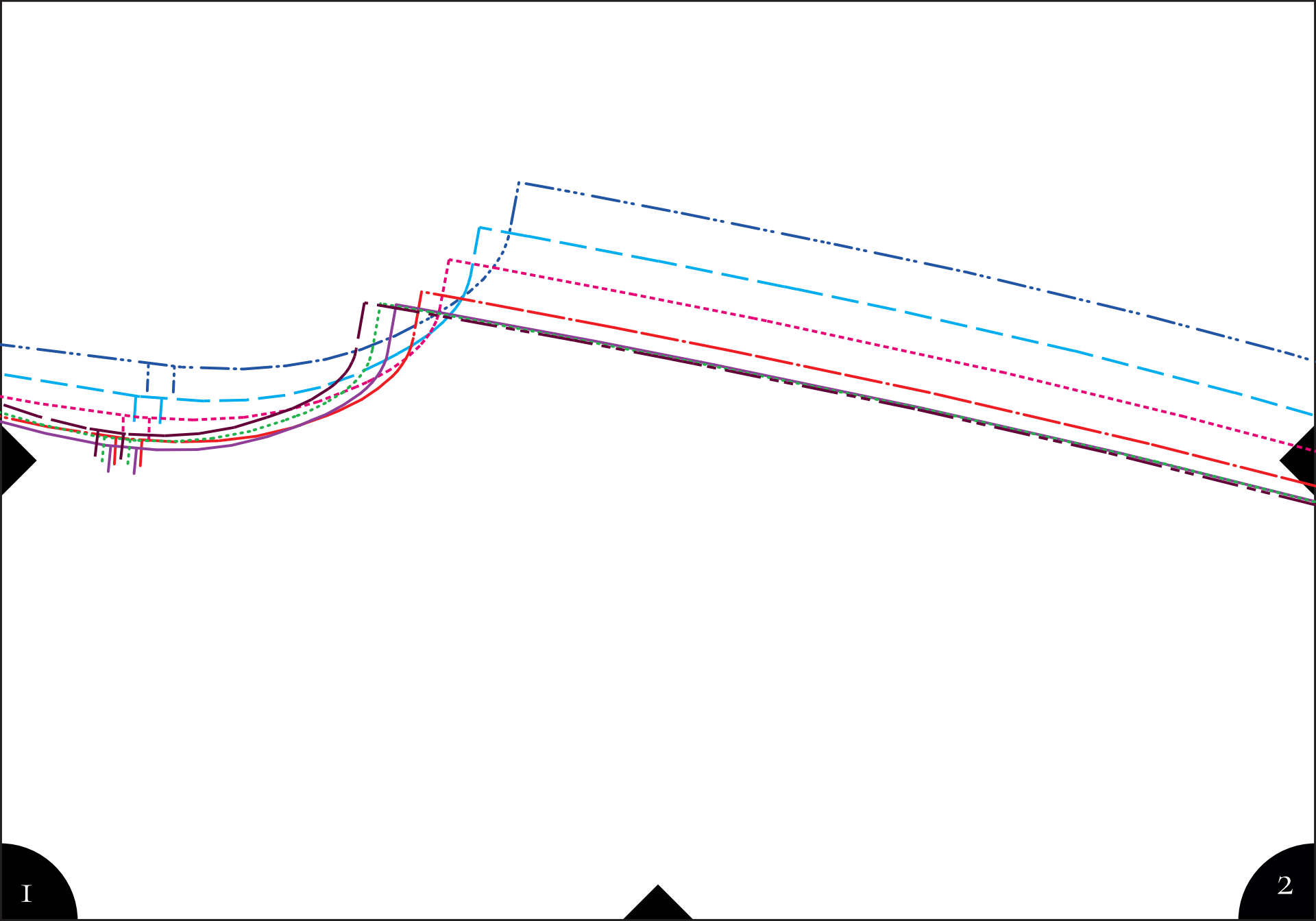
2. Klebe die Seiten aneinander (mit einem Klebestift oder einem transparenten Klebeband). Die Linien, sowie die identischen Zahlen und Rauten treffen dabei aufeinander. Starte mit den Reihen und klebe dann die Reihen an der oberen bzw. unteren Kante, aneinander.
3. Schneide die einzelnen Schnittteile in deiner Konfektionsgröße aus.

10 x 10 cm

Kontrollkästchen - bitte nachmessen und prüfen, ob Breite/Höhe exakt 10 cm betragen

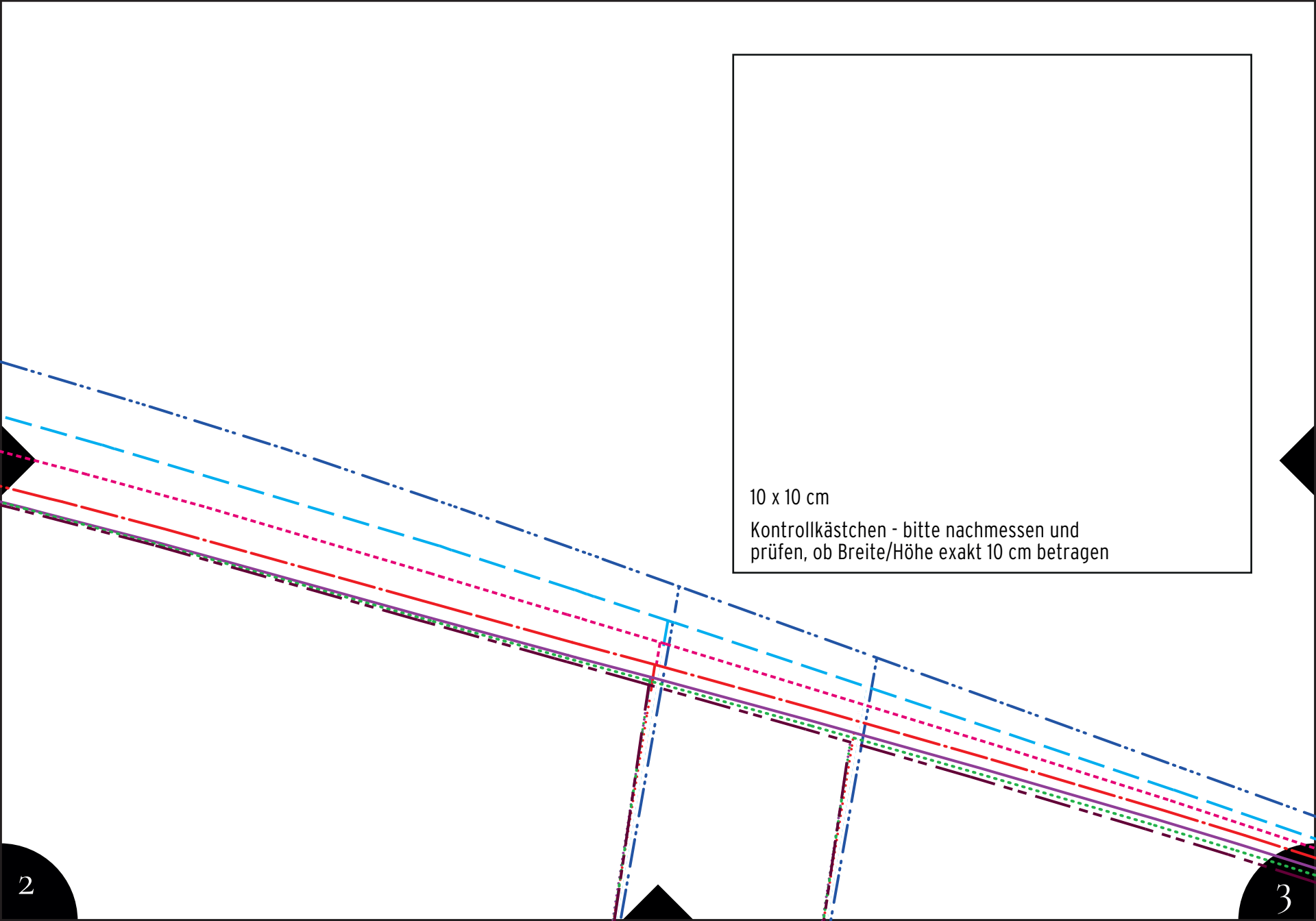
Schnittmuster ist
inkl. Nahtzugaben!

Für den Jumpsuit benötigst
du noch einen nicht teilbaren
Reißverschluss (50 cm lang)
in einer zu deinem Stoff
passenden Farbe!



I

2



10 x 10 cm
Kontrollkästchen - bitte nachmessen und
prüfen, ob Breite/Höhe exakt 10 cm betragen

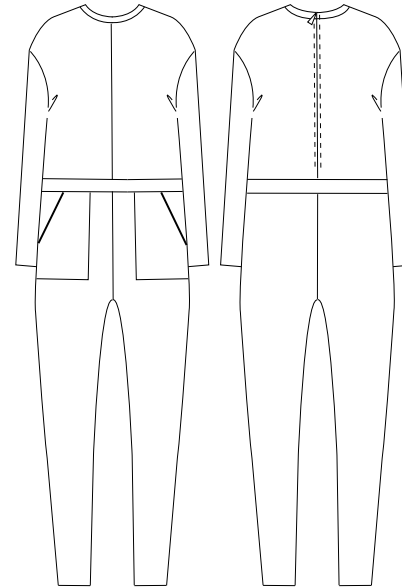
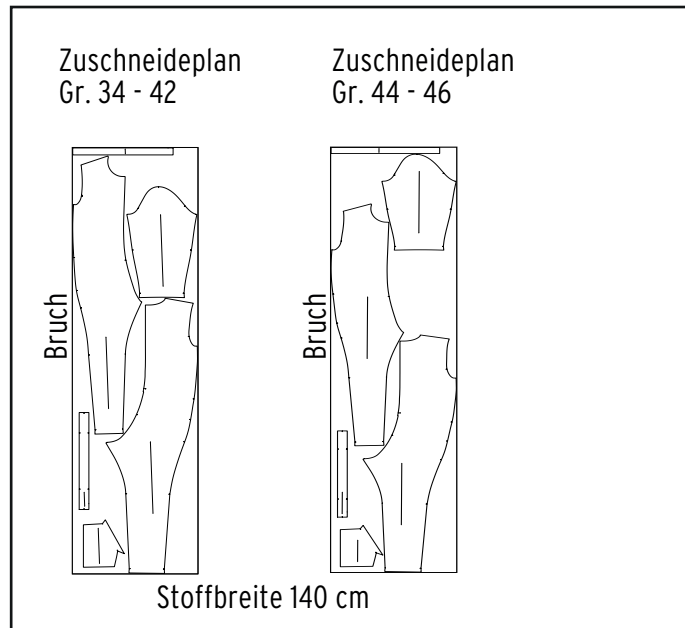
The diagram shows a perspective view of a roof structure with several parallel lines representing different layers or components. The lines are color-coded: a top blue dash-dot line, a cyan dashed line, a magenta dotted line, a red dashed line, a purple dash-dot line, a green dotted line, and a bottom black dashed line. Two vertical lines, one blue and one purple, represent control boxes. The text '10 x 10 cm' and 'Kontrollkästchen - bitte nachmessen und prüfen, ob Breite/Höhe exakt 10 cm betragen' is located in a white box on the right side of the diagram. The numbers '2' and '3' are in black circles at the bottom left and bottom right corners, respectively.

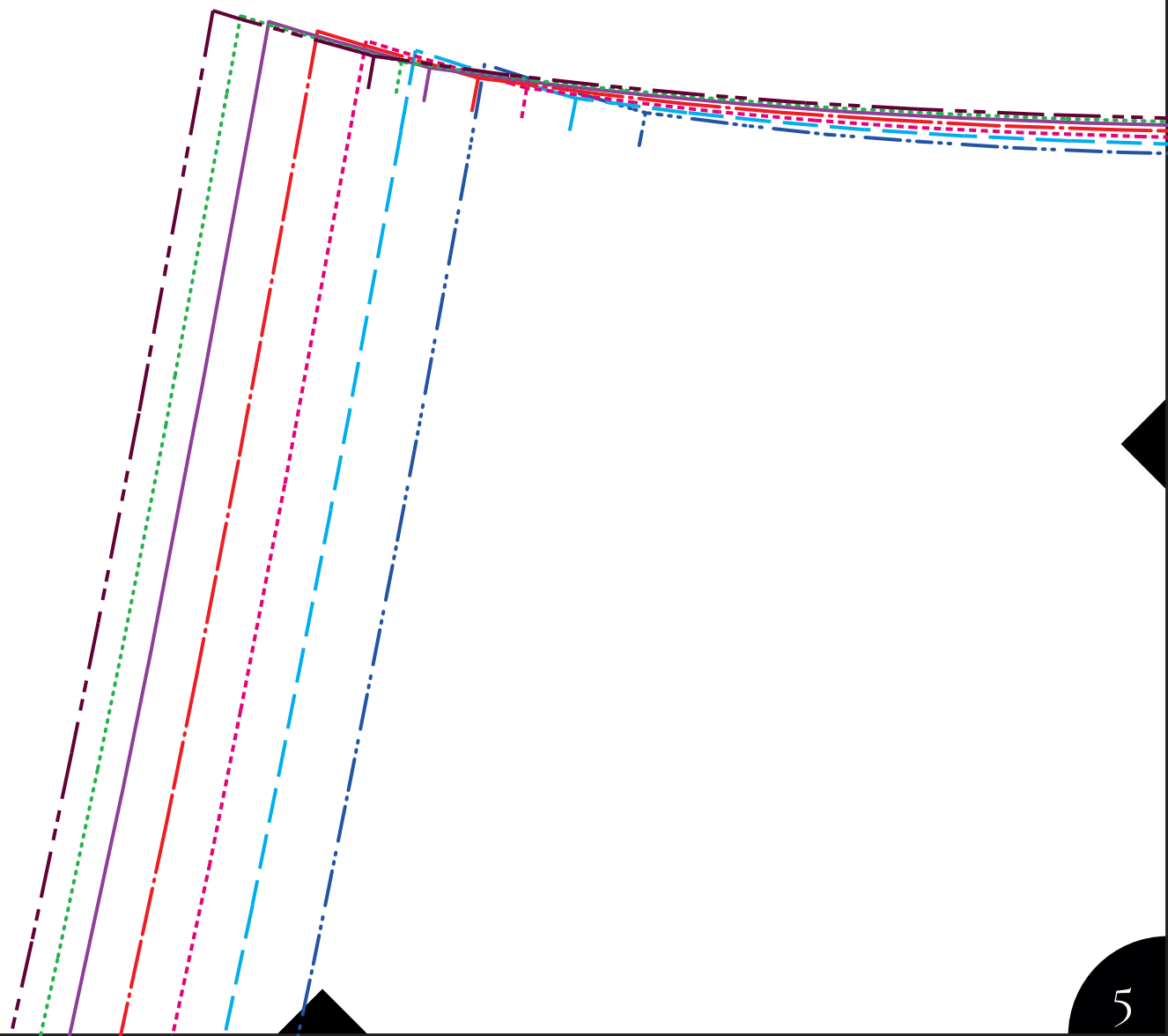
2

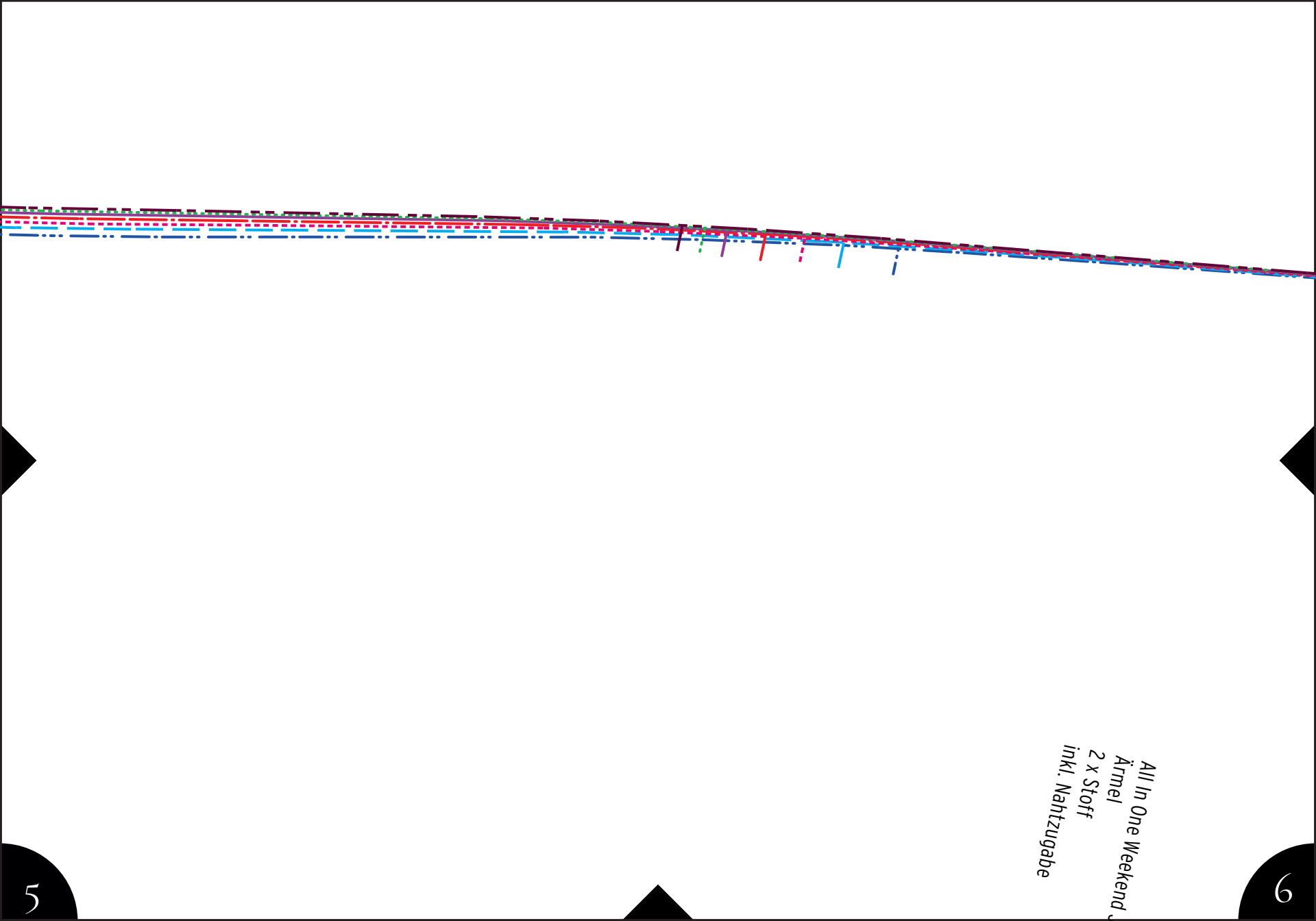
3

Maßtabelle (in cm)

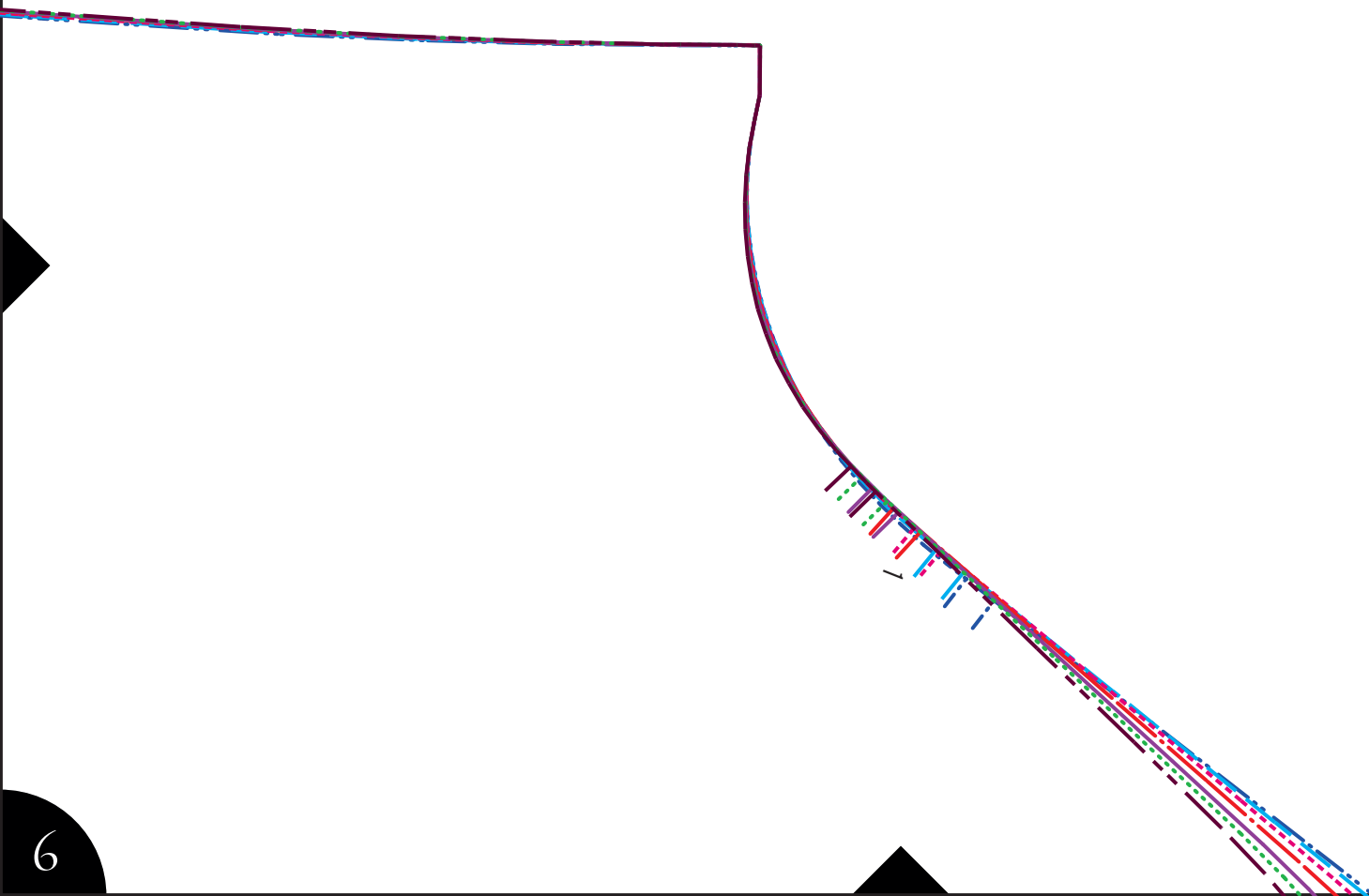
Größe	34	36	38	40	42	44	46
Brustumfang	82	85	88	92	96	100	106
Taillenumfang	66	69	72	76	80	84	90
Hüfte	91	94	97	101	105	109	114,5





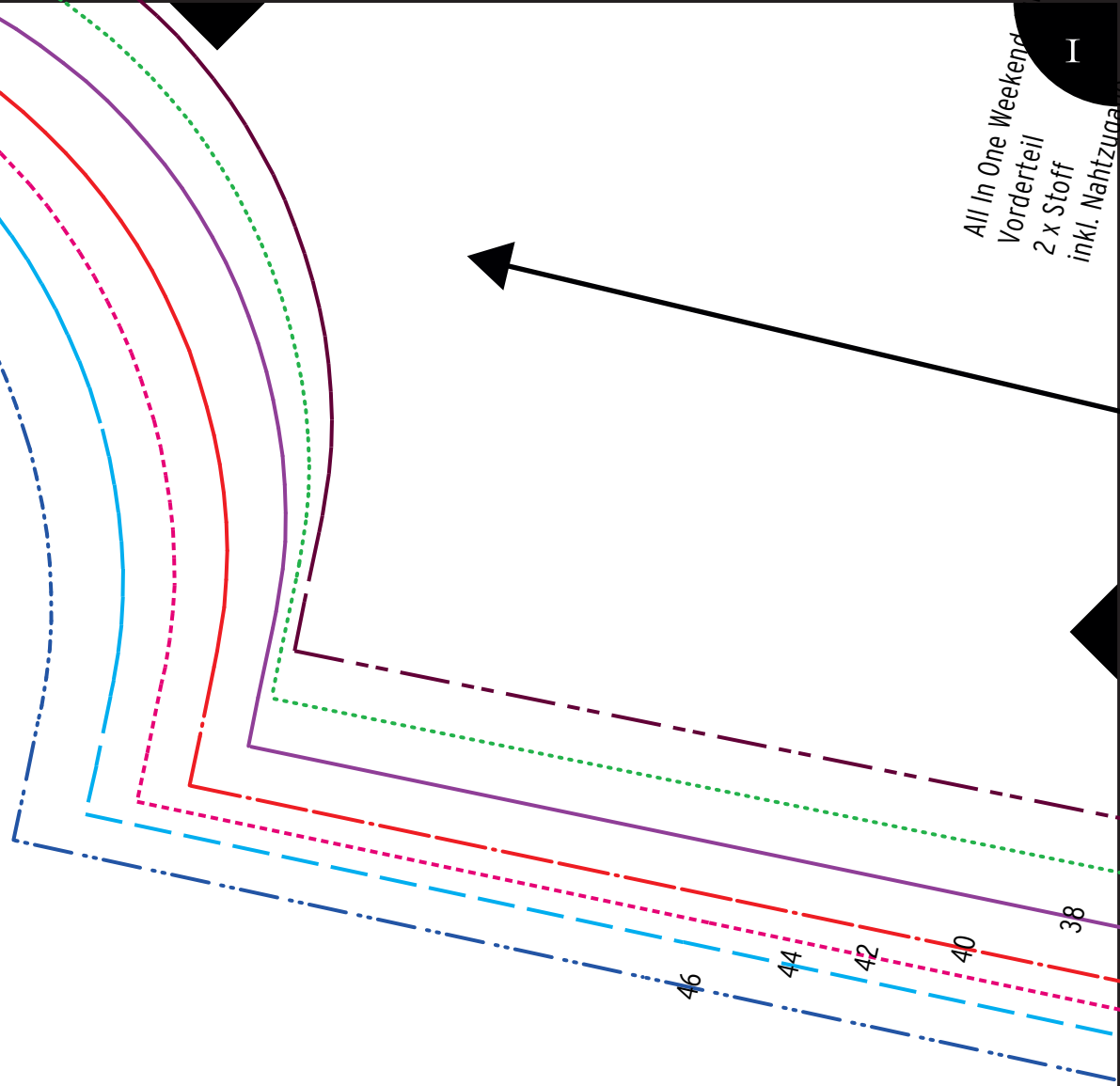
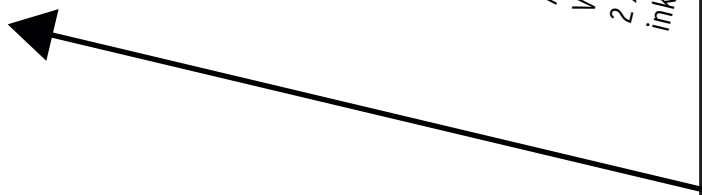


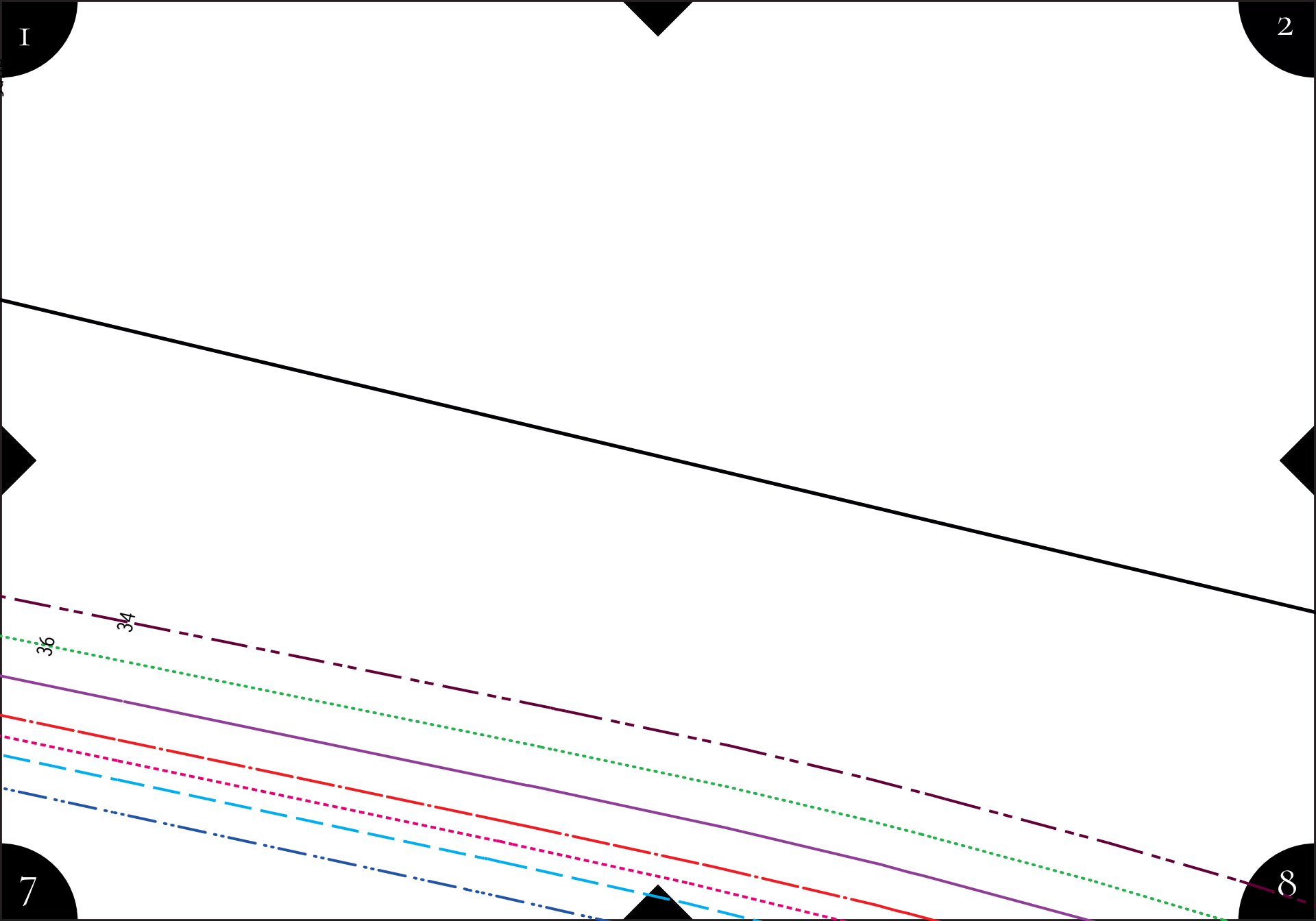
All In One Weekend
Ärmel
2 x Stoff
inkl. Nahtzugabe

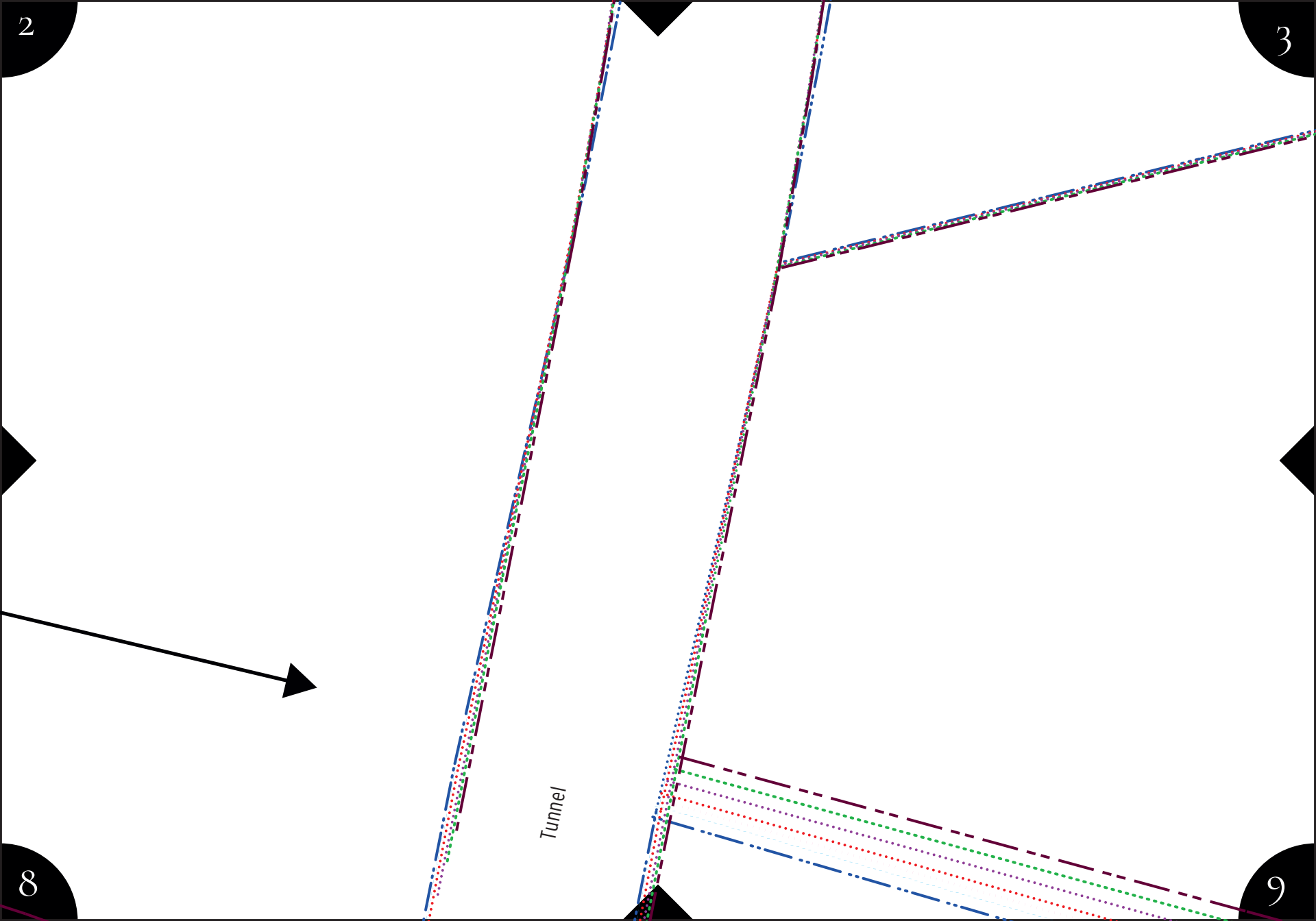


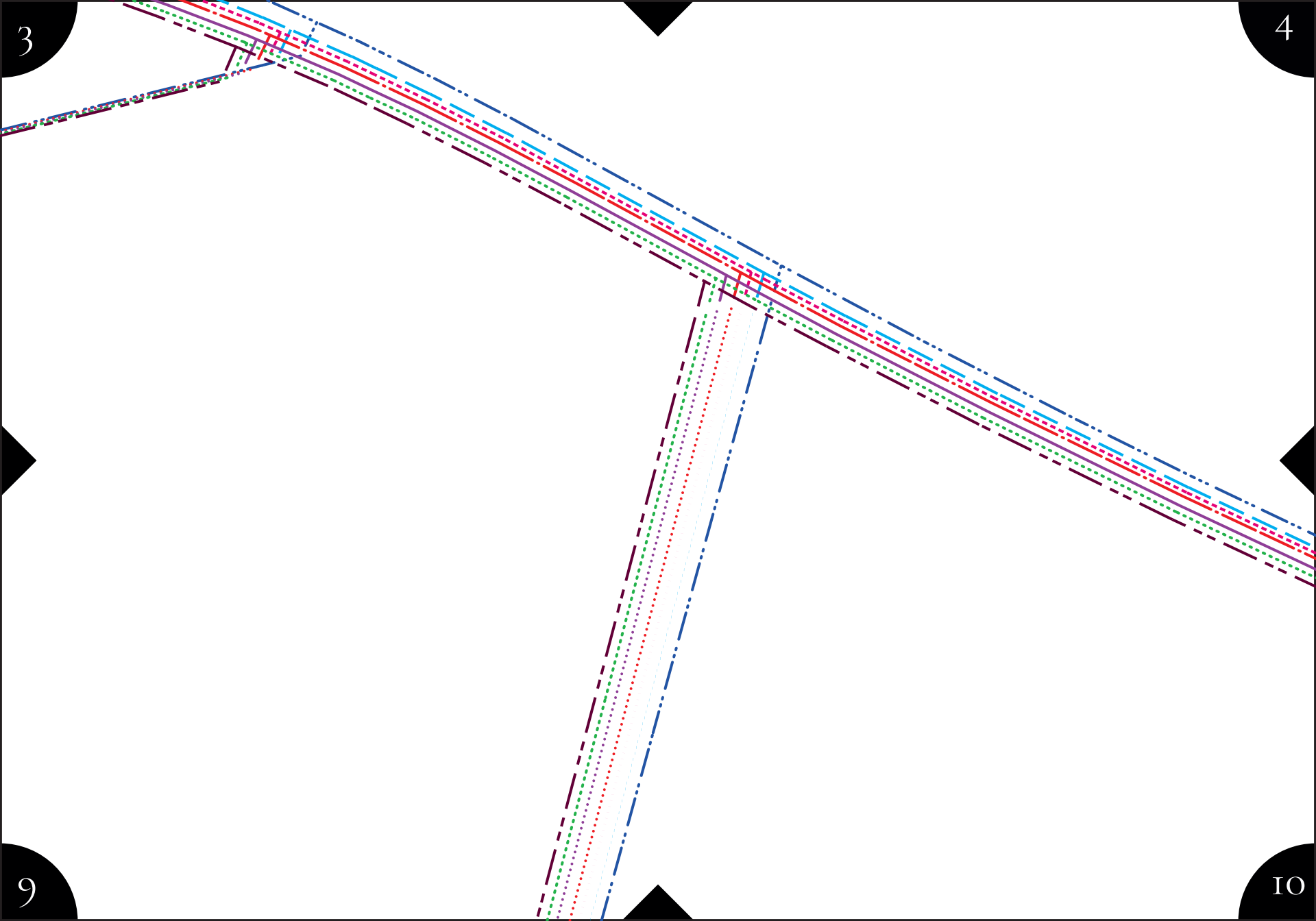
All In One Weekend
Vorderteil
2 x Stoff
inkl. Nahtzugabe

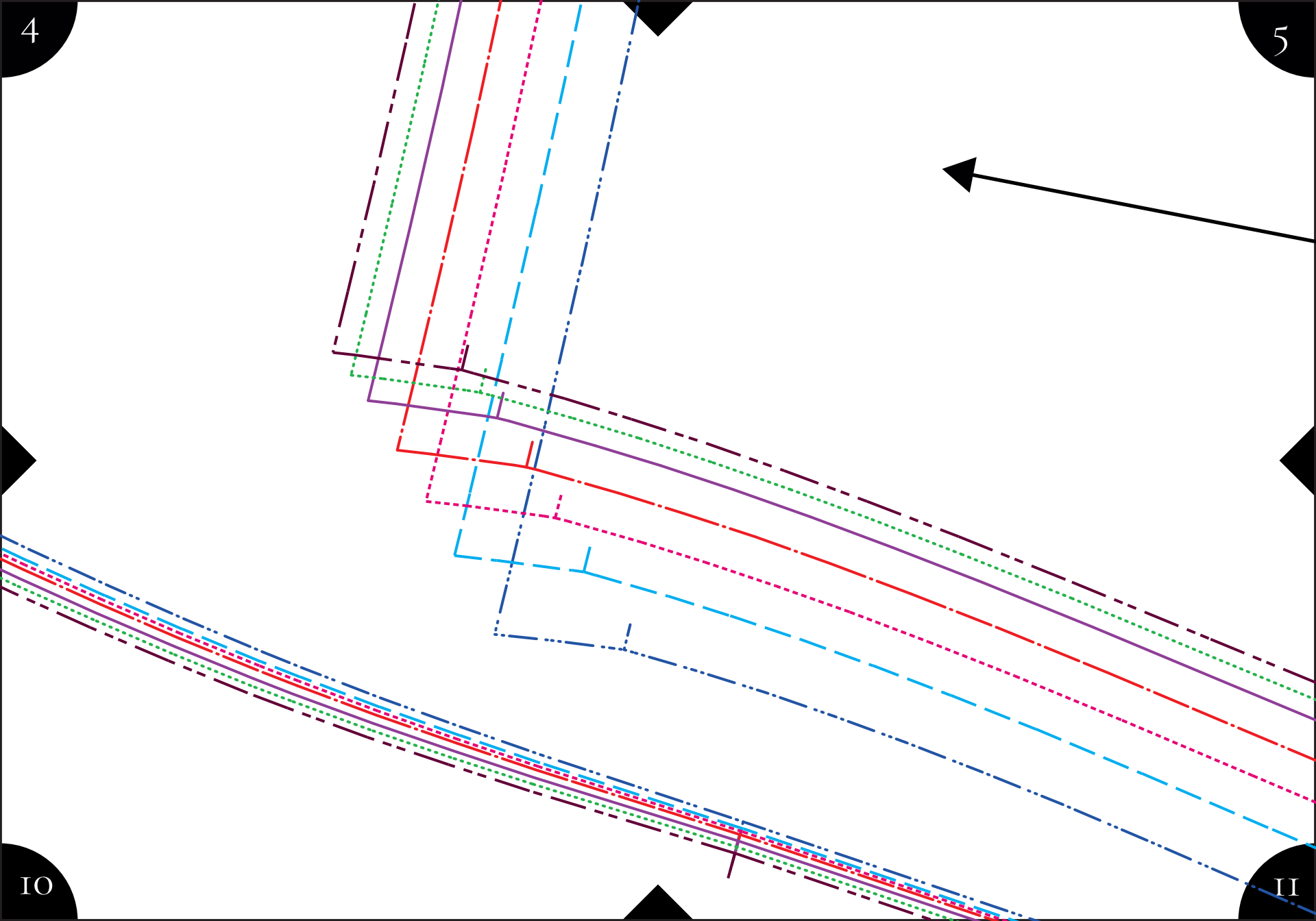
I







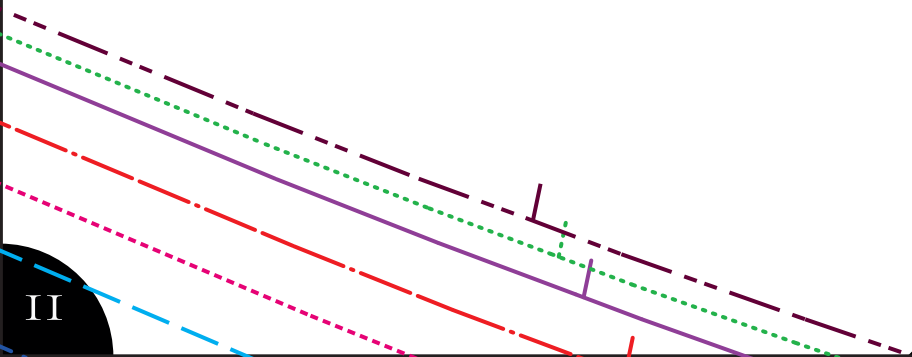
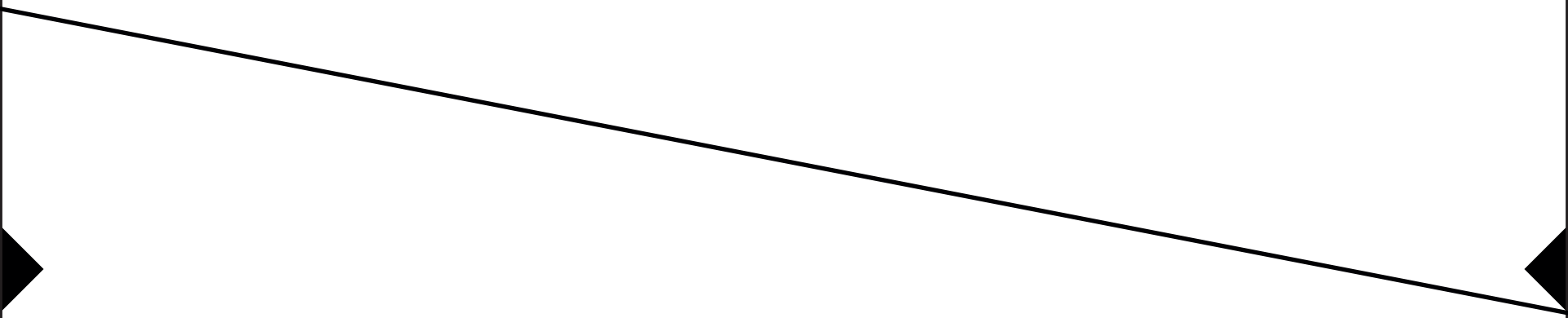




5

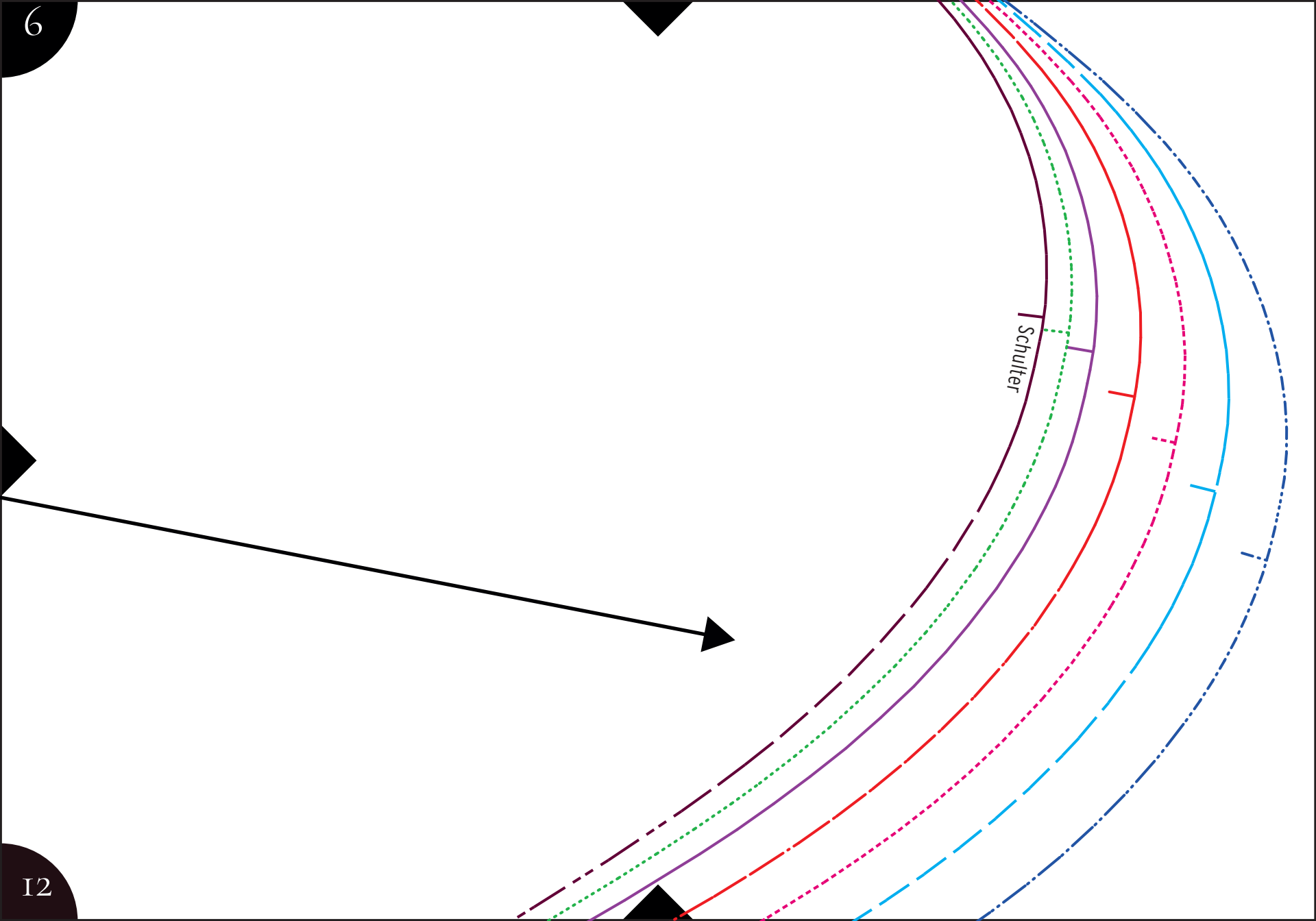
6

Lumber // Sew me GU



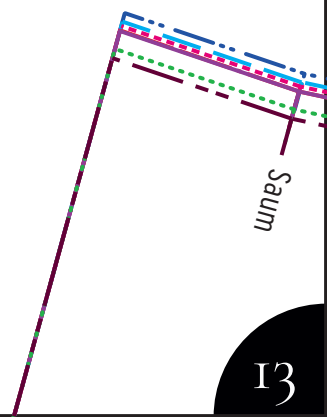
II

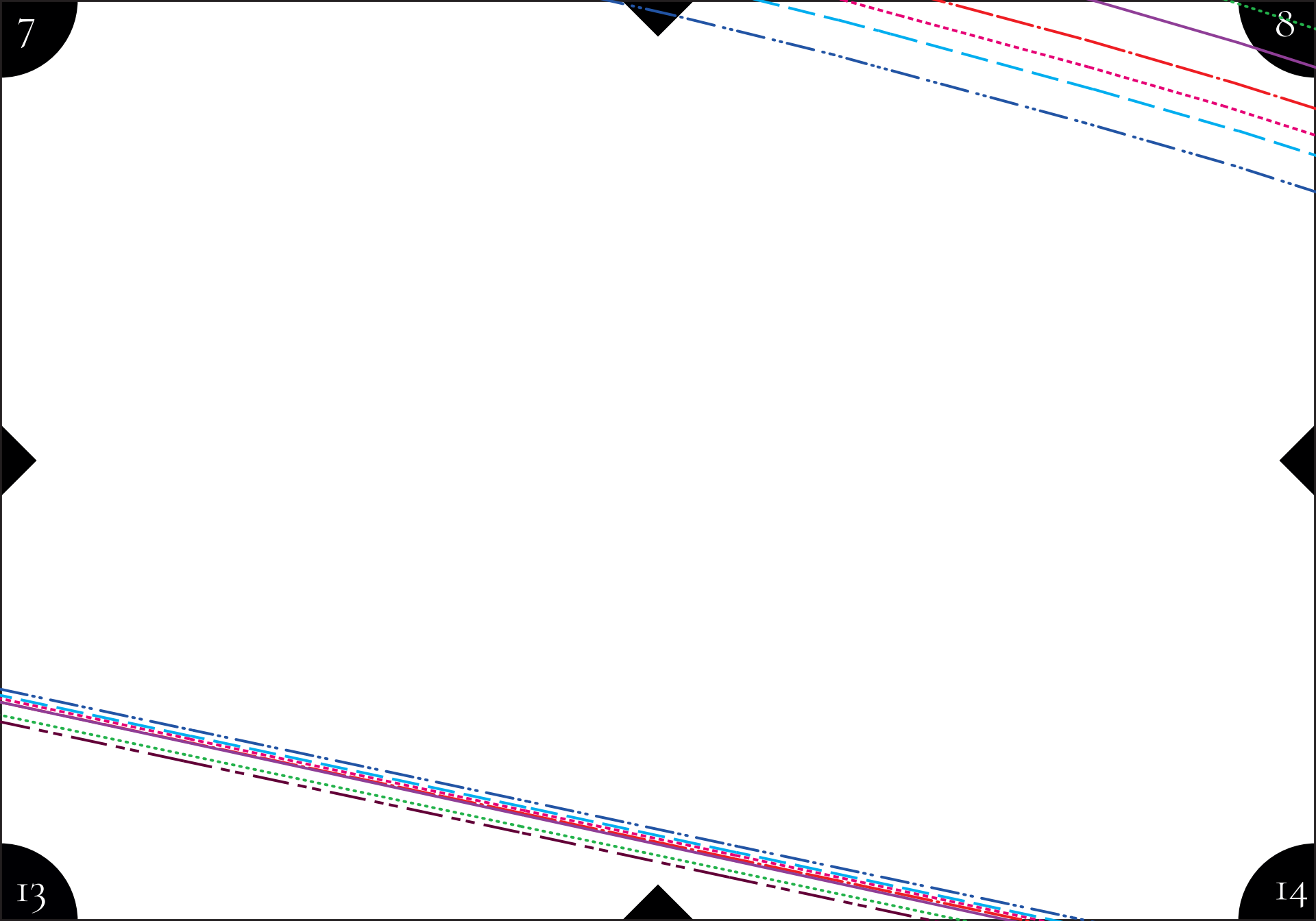
I2

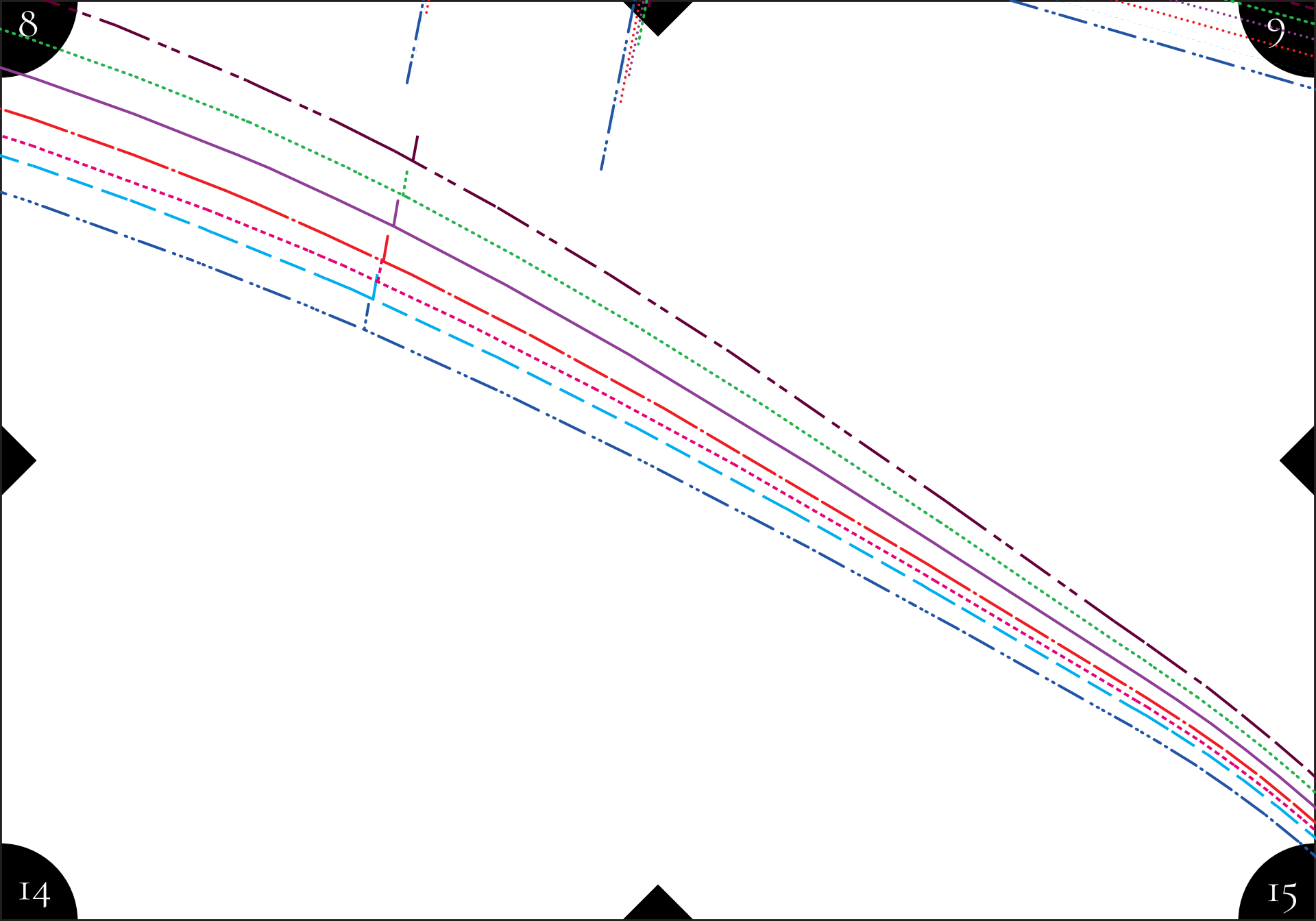


Schulter

Saum





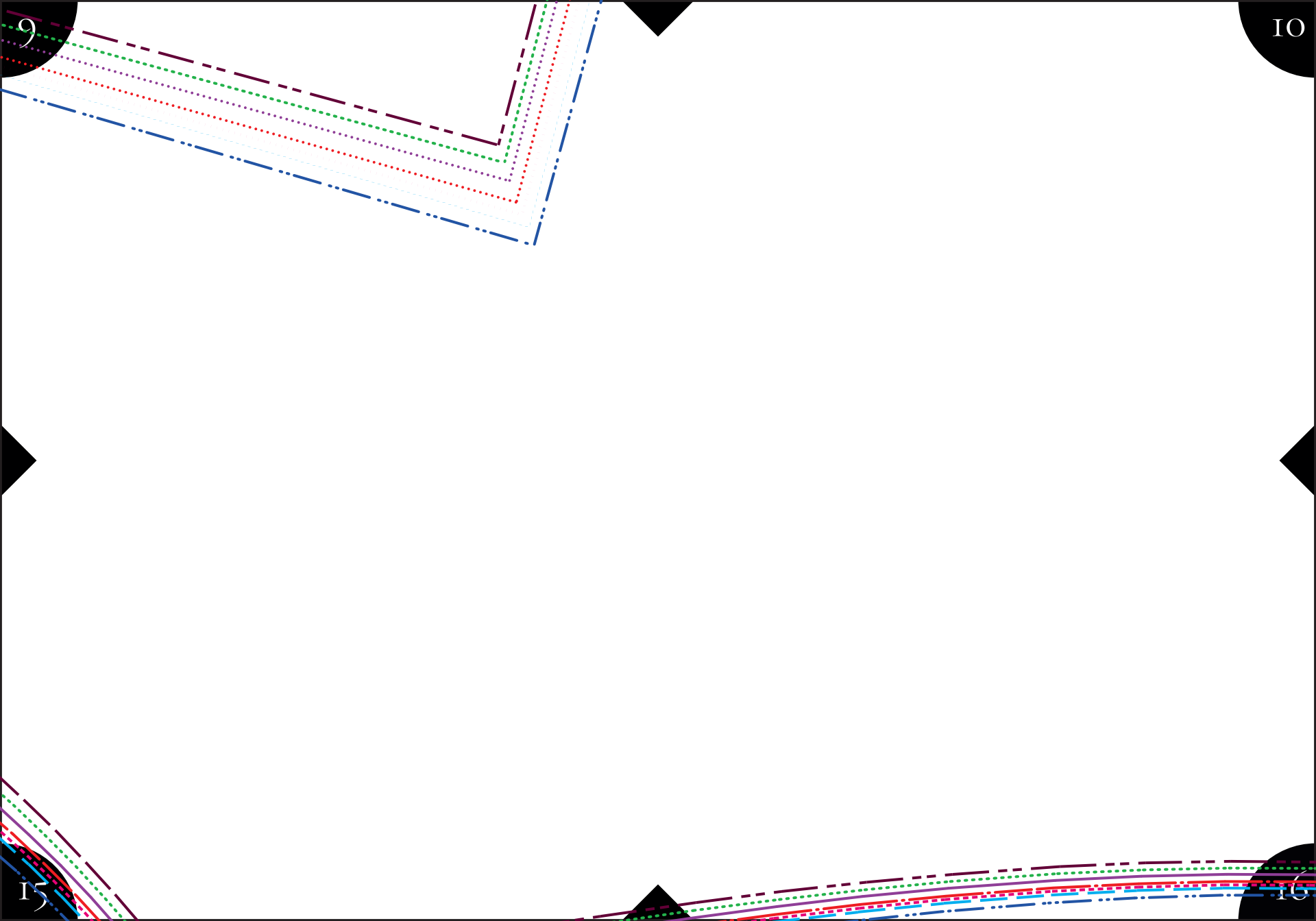


8

9

14

15

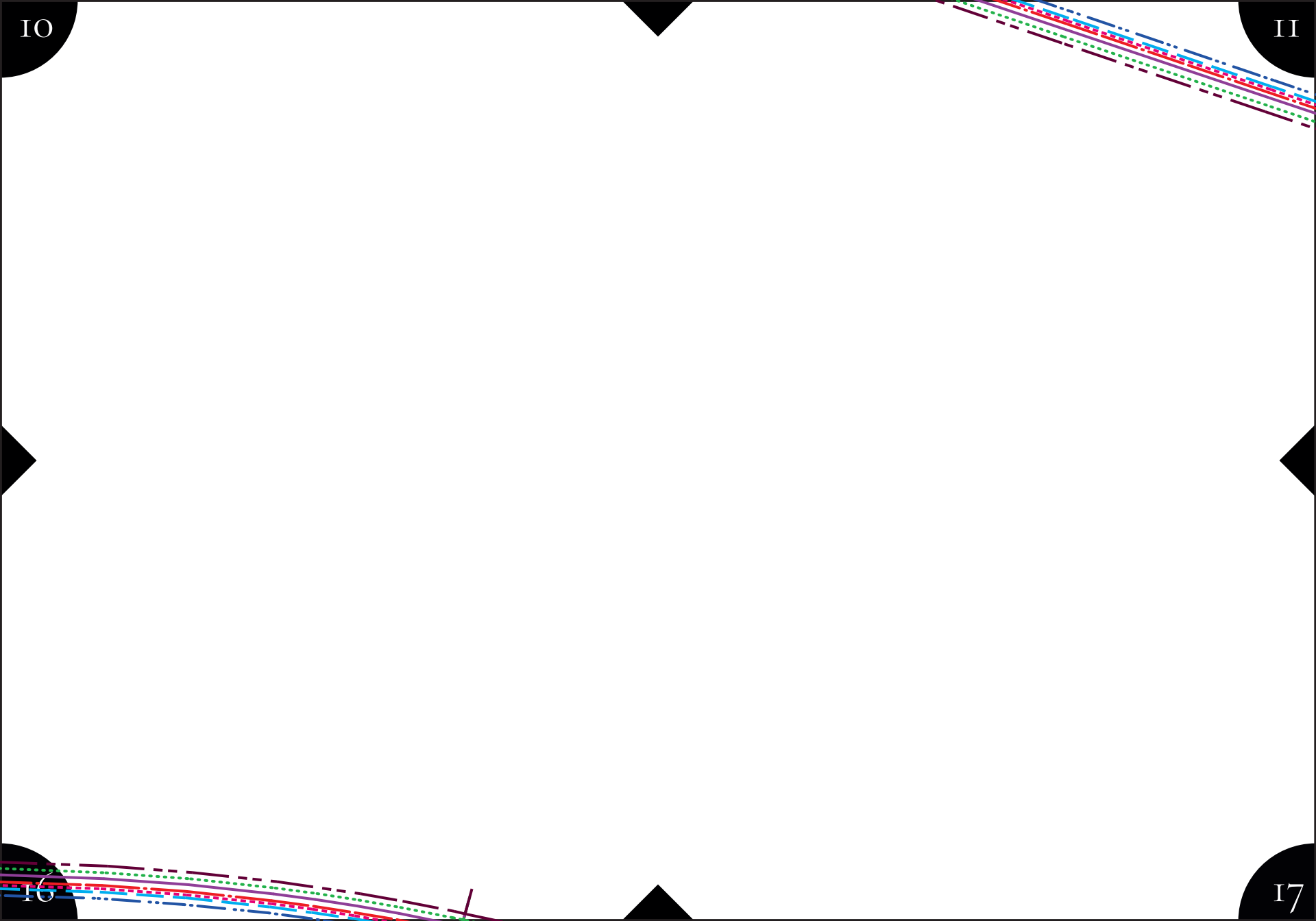


9

10

15

16

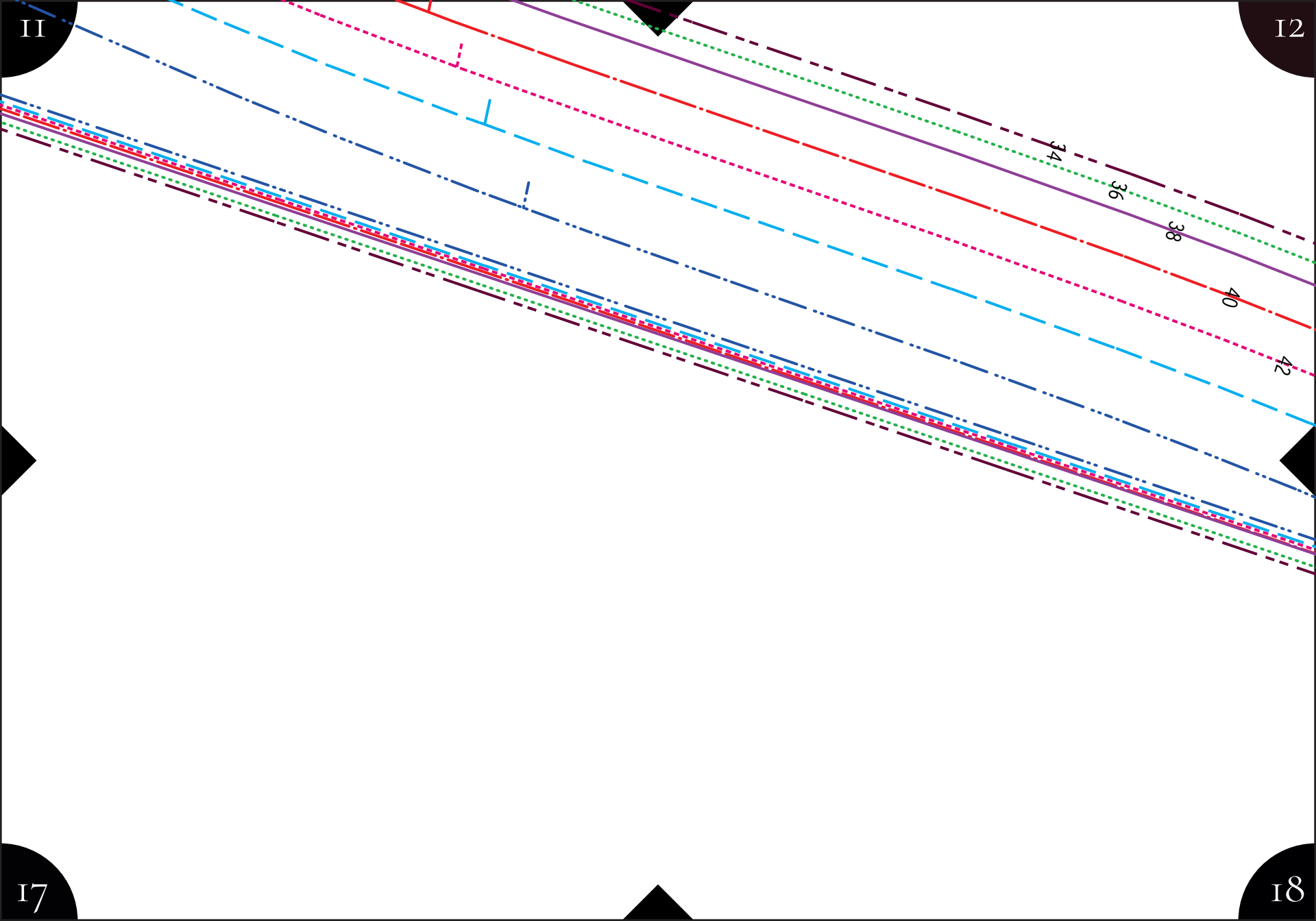


IO

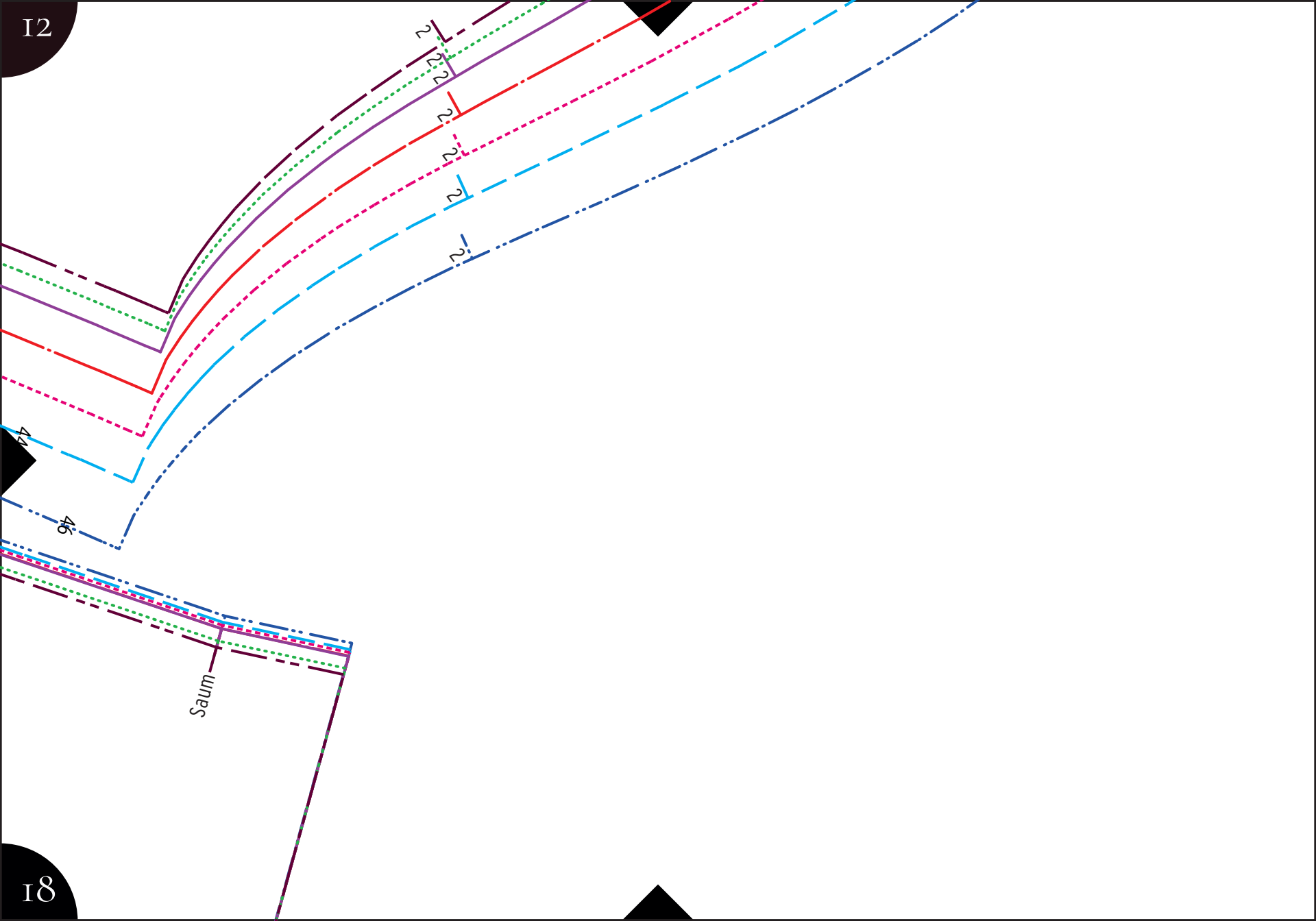
II

I6

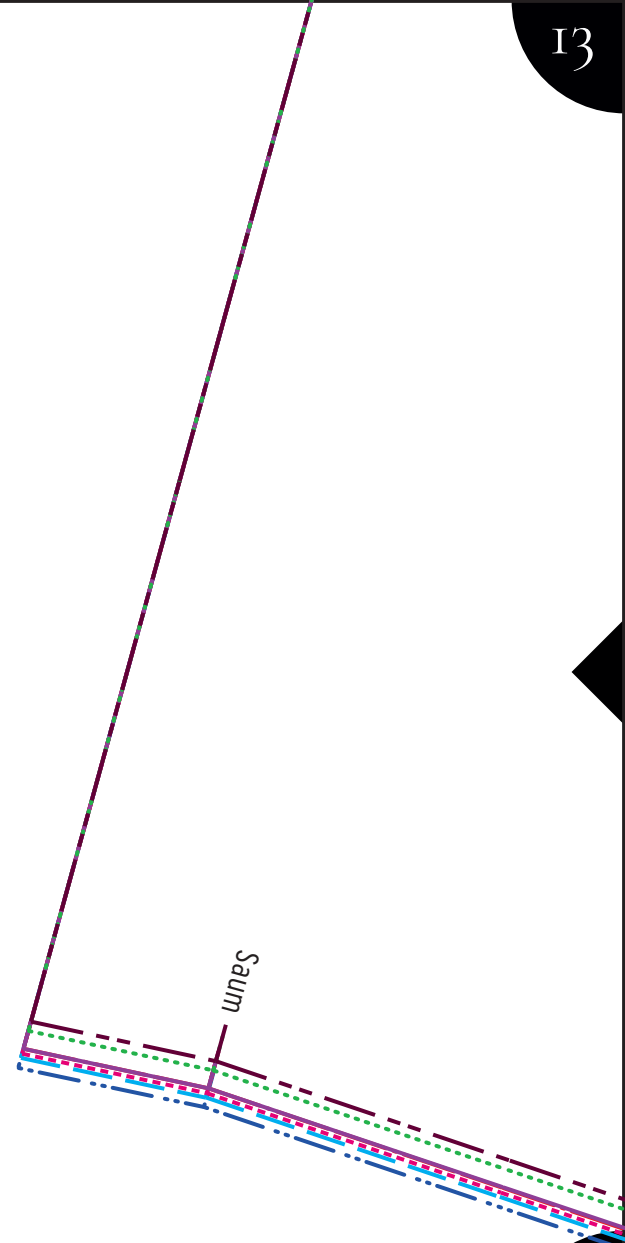
I7



12



18



13

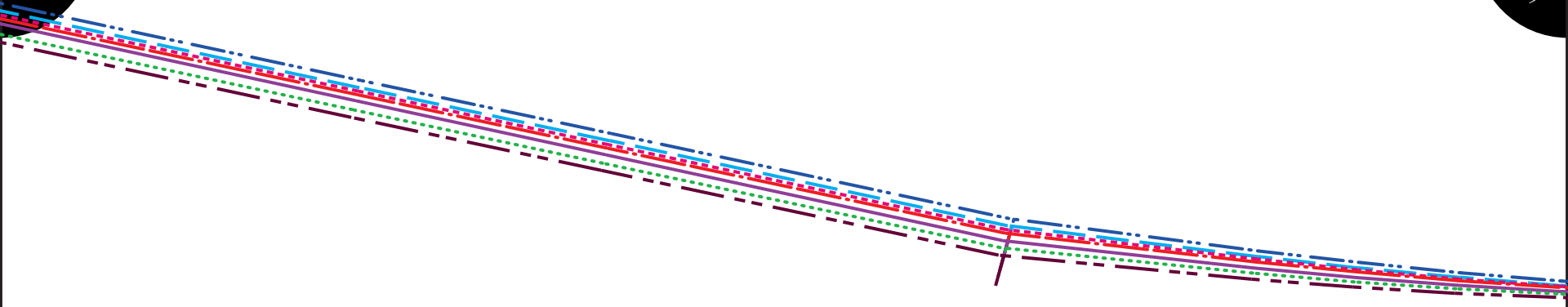
14

19

20

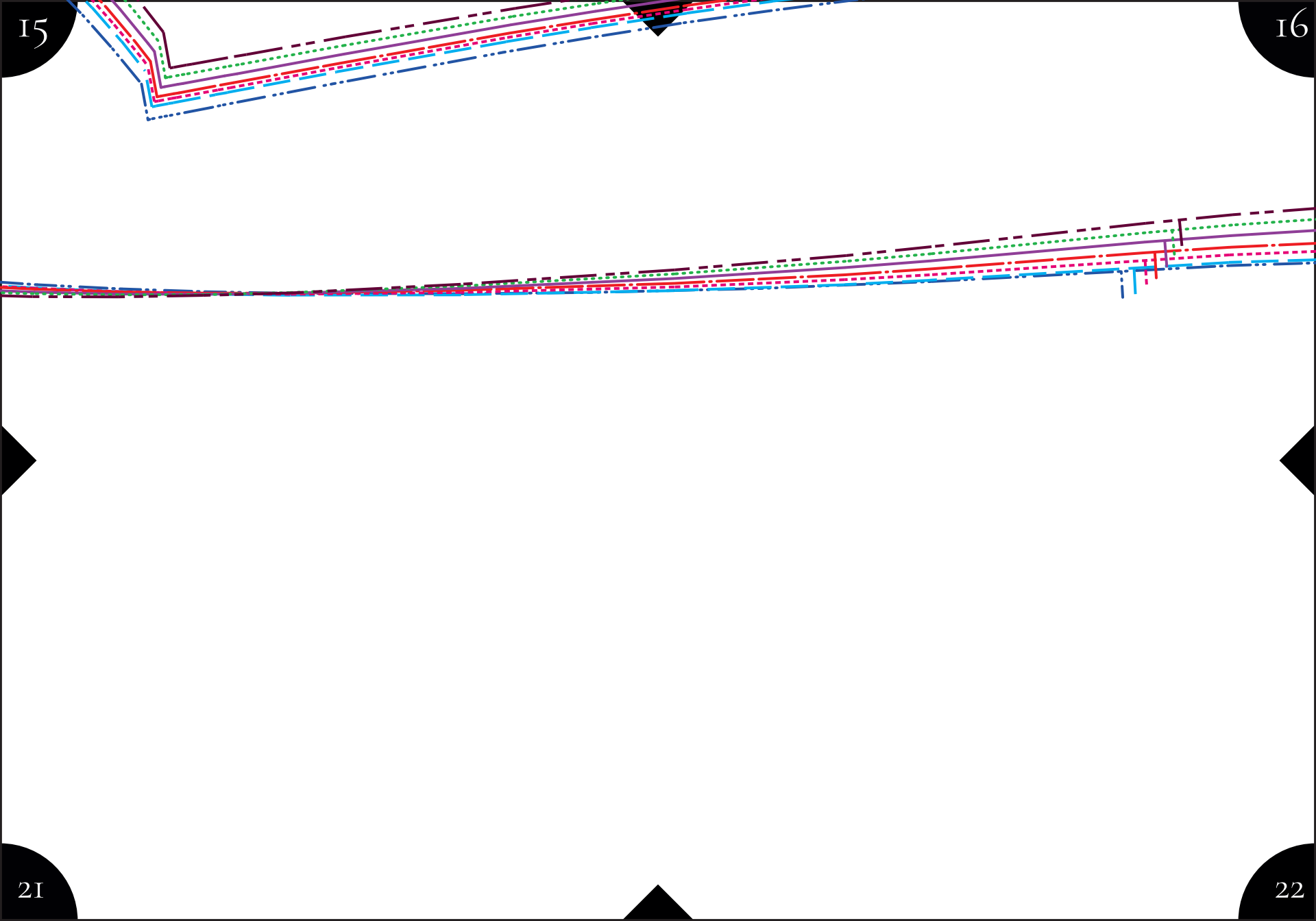
I4

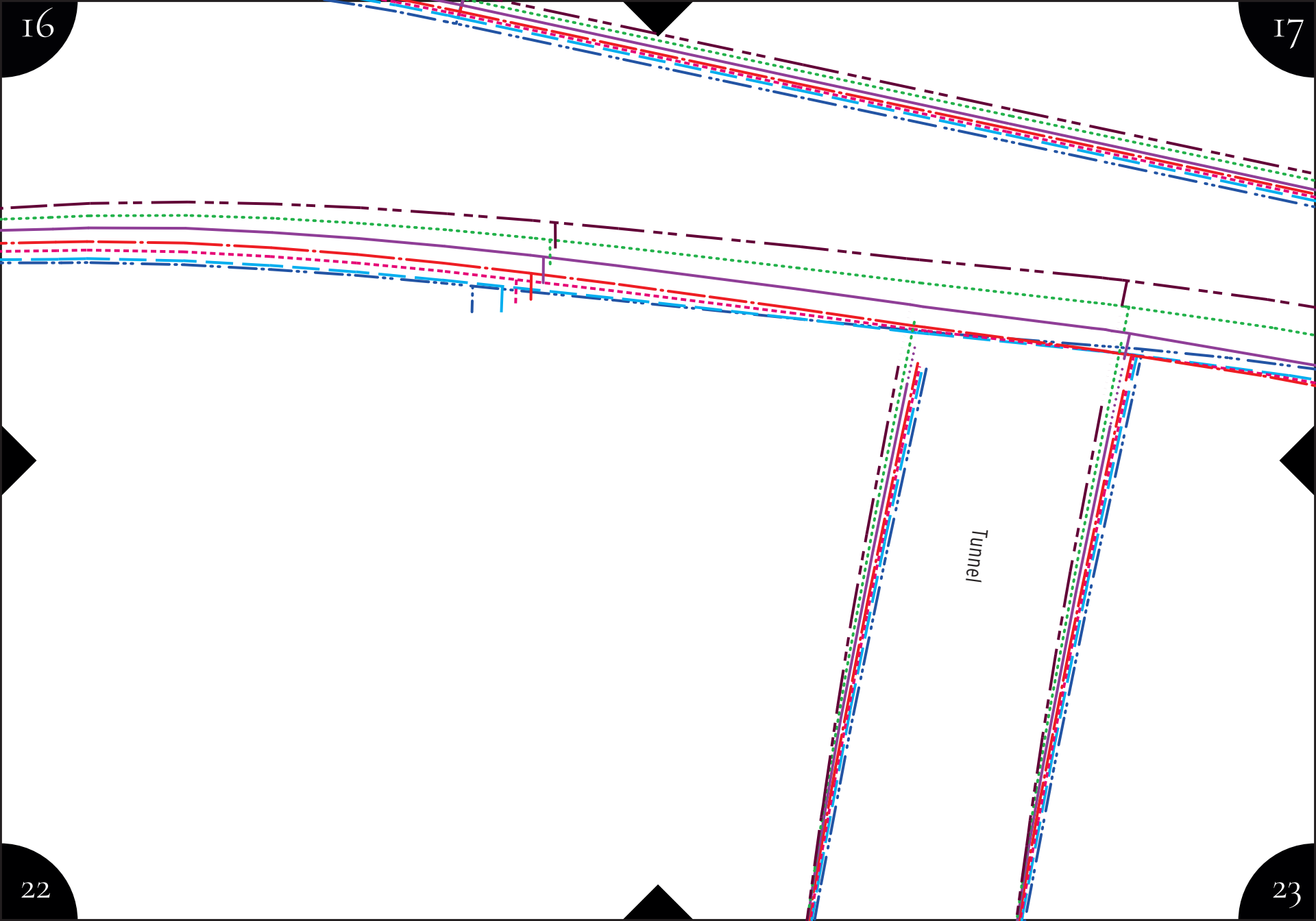
I5

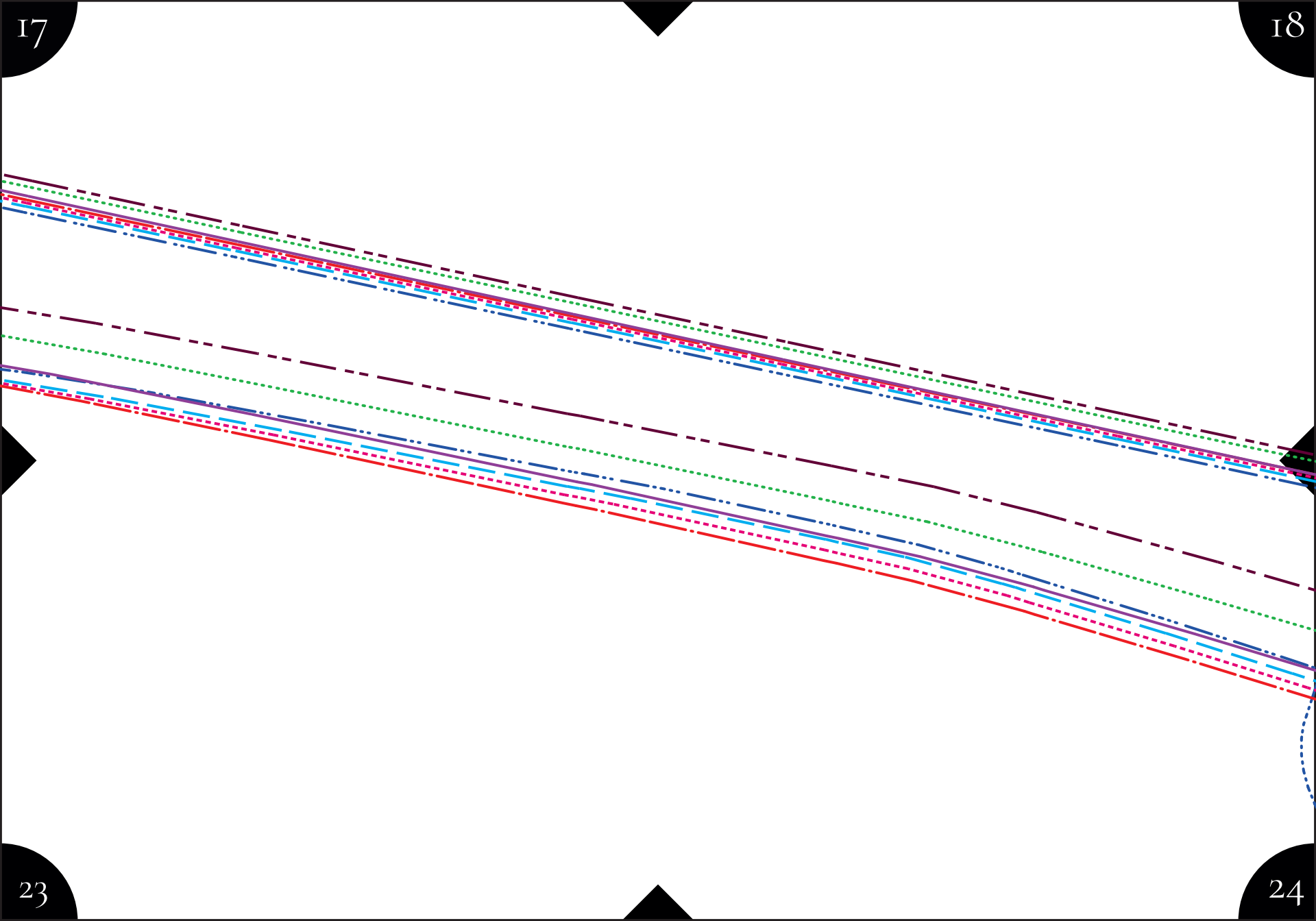


20

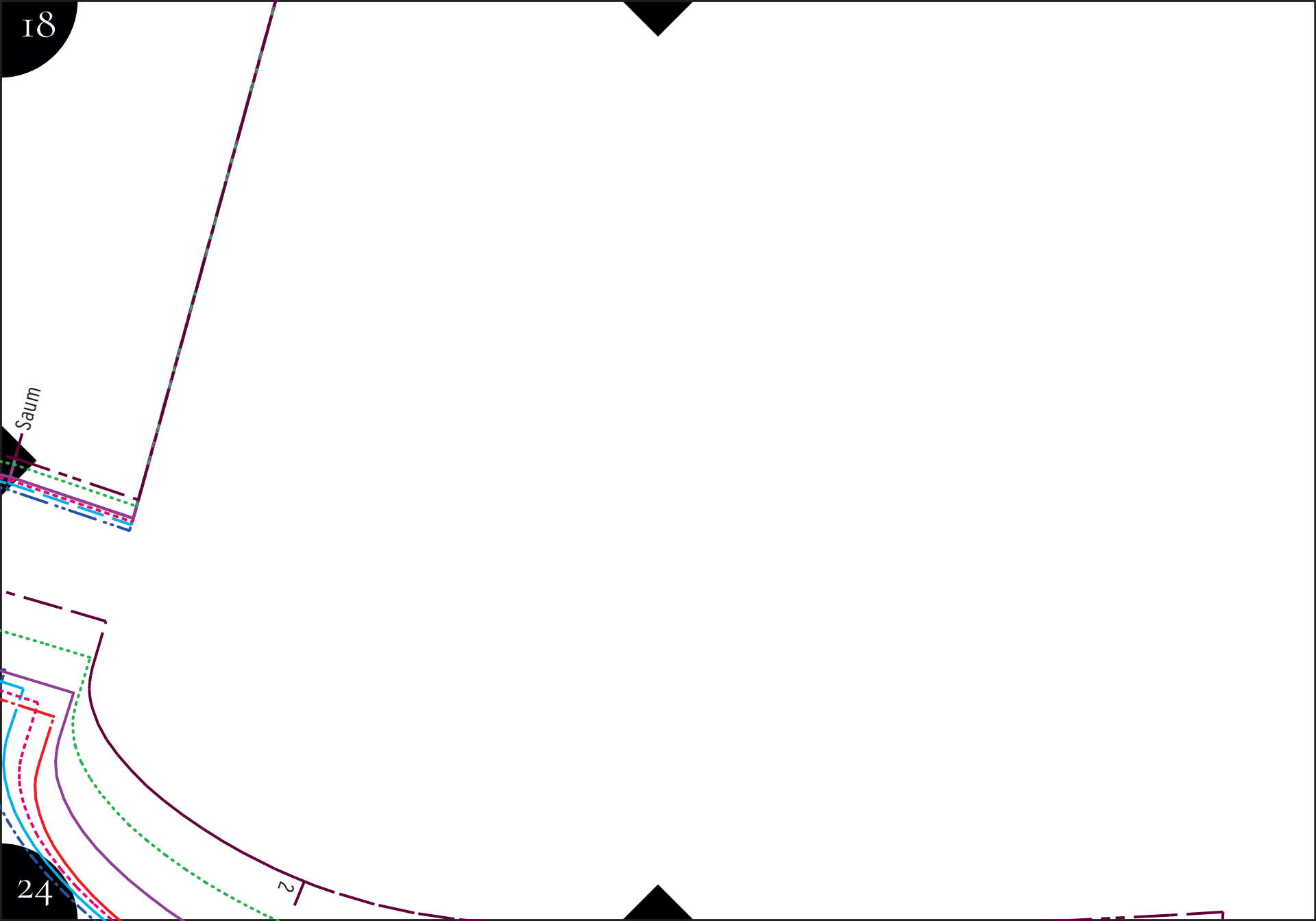
2I

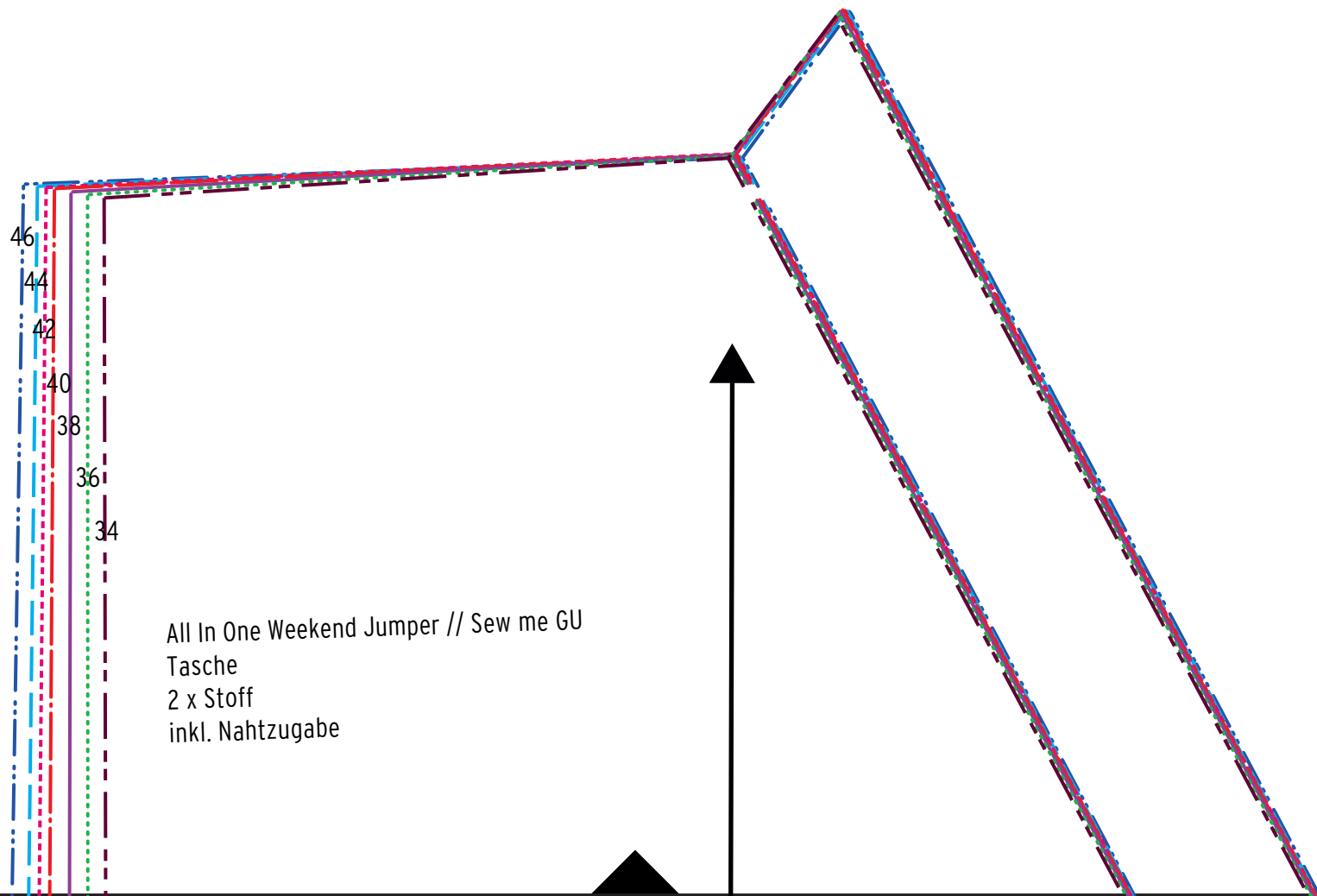




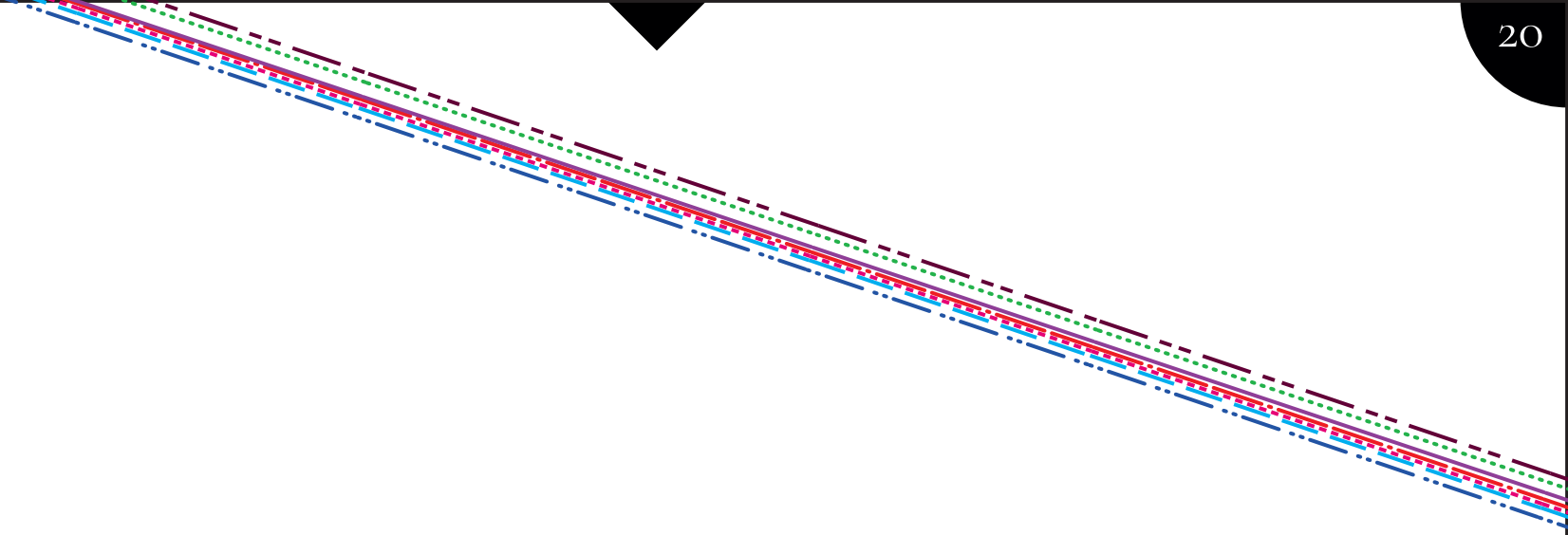


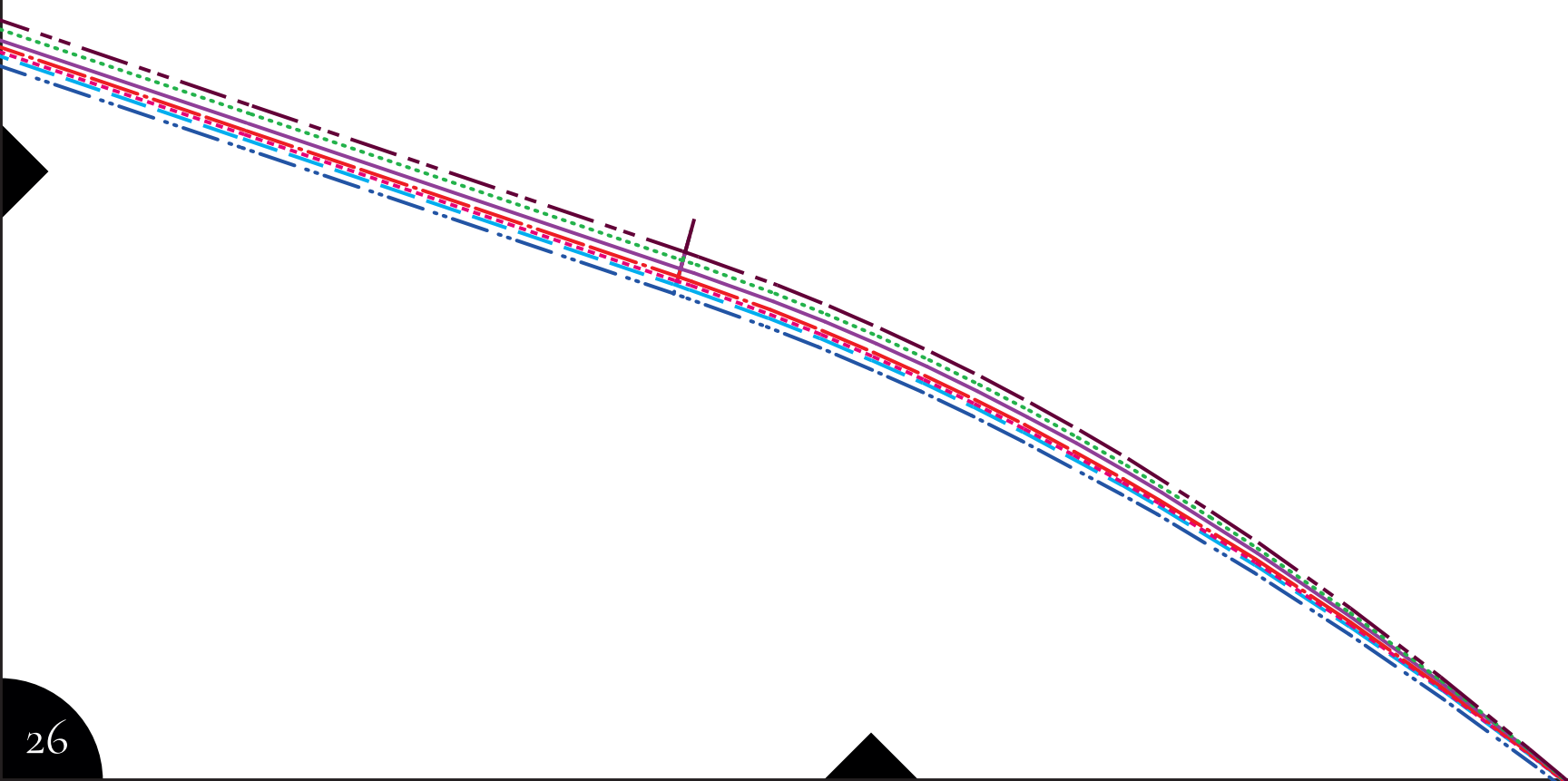
18





All In One Weekend Jumper // Sew me GU
Tasche
2 x Stoff
inkl. Nahtzugabe



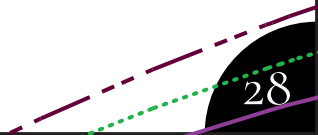


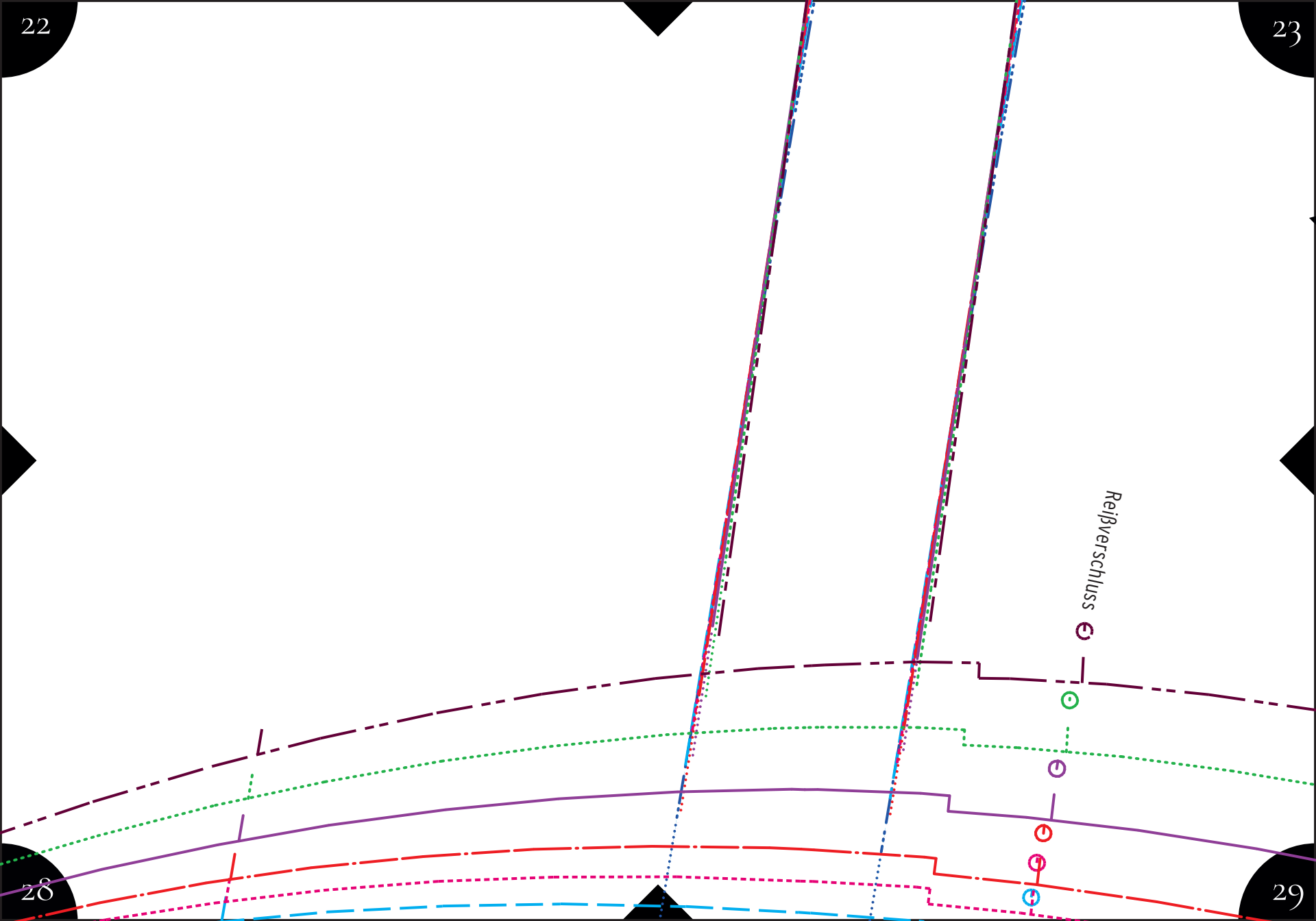
21

22

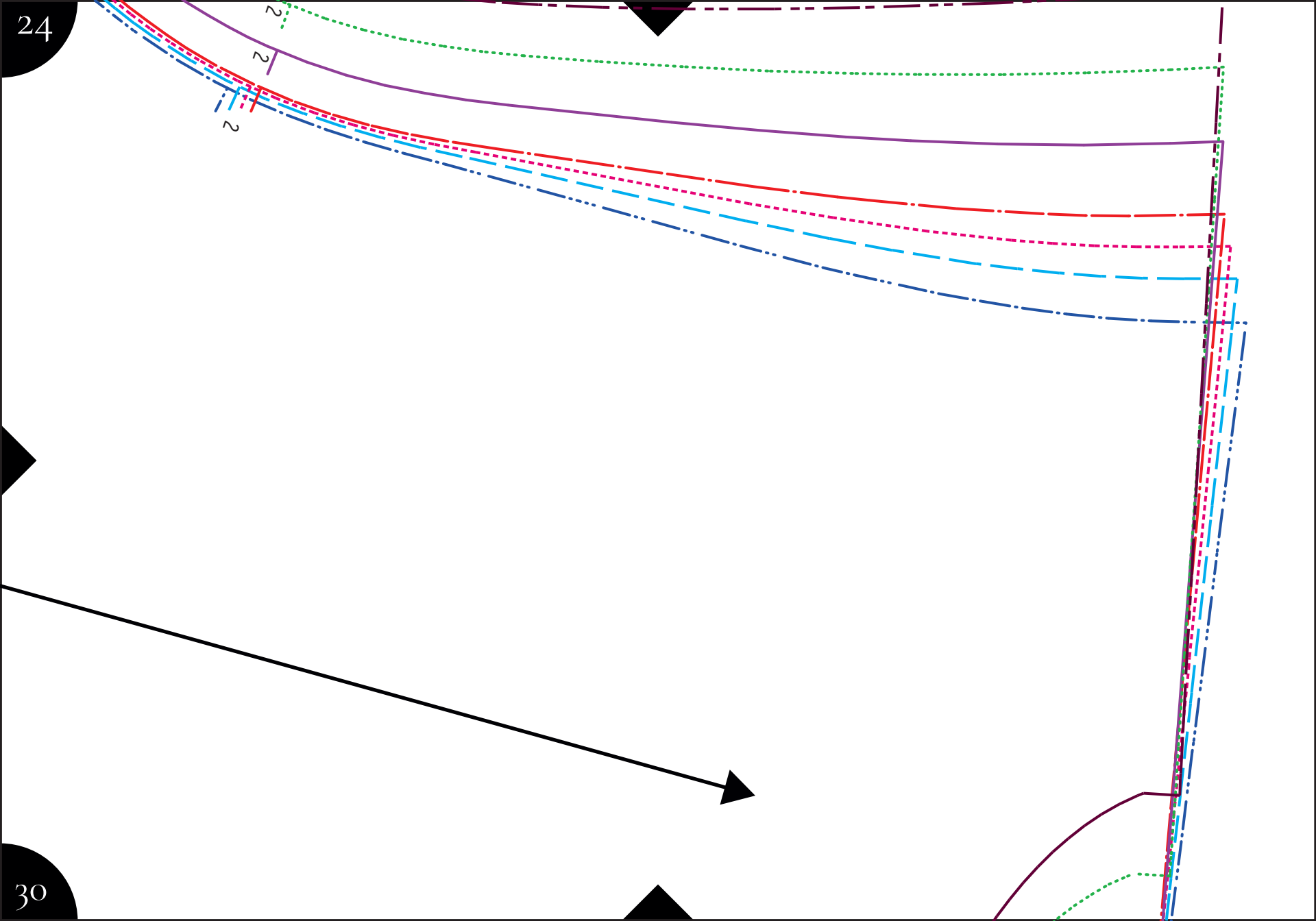
27

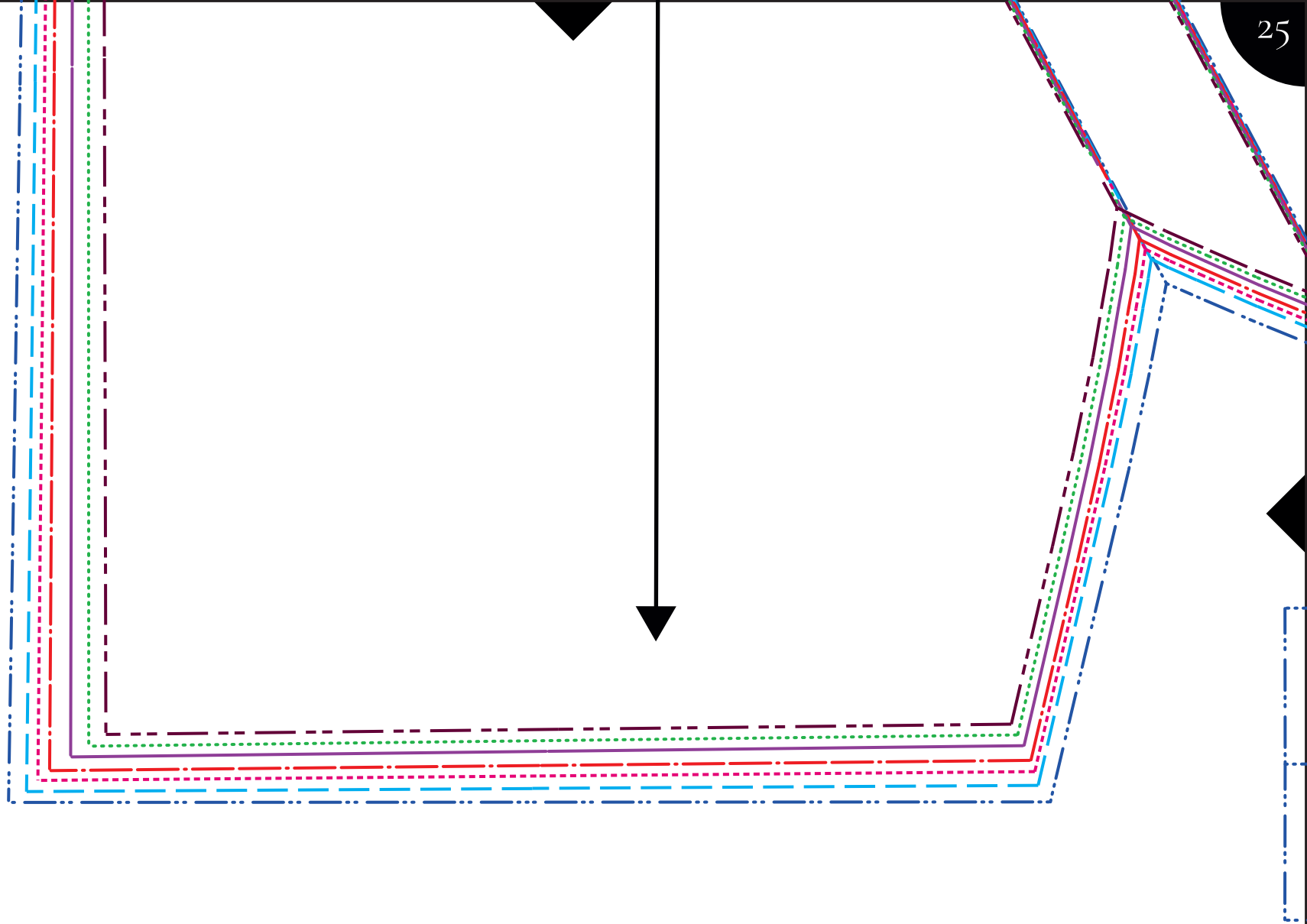
28

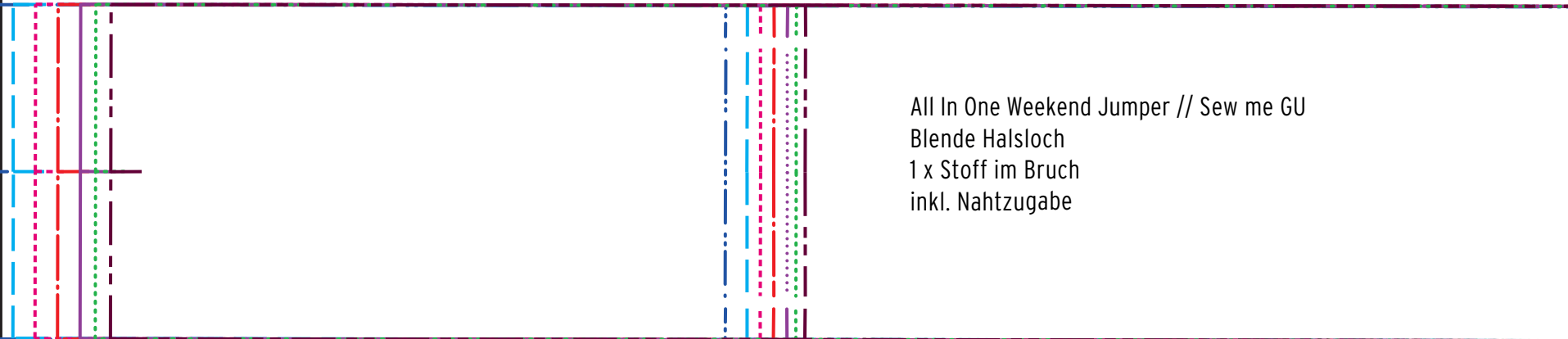




All In One Weekend Jumper // Sew me CU
Rückenteil
2 x Stoff
inkl. Nahtzugabe



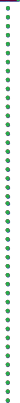




All In One Weekend Jumper // Sew me GU
Blende Halsloch
1 x Stoff im Bruch
inkl. Nahtzugabe

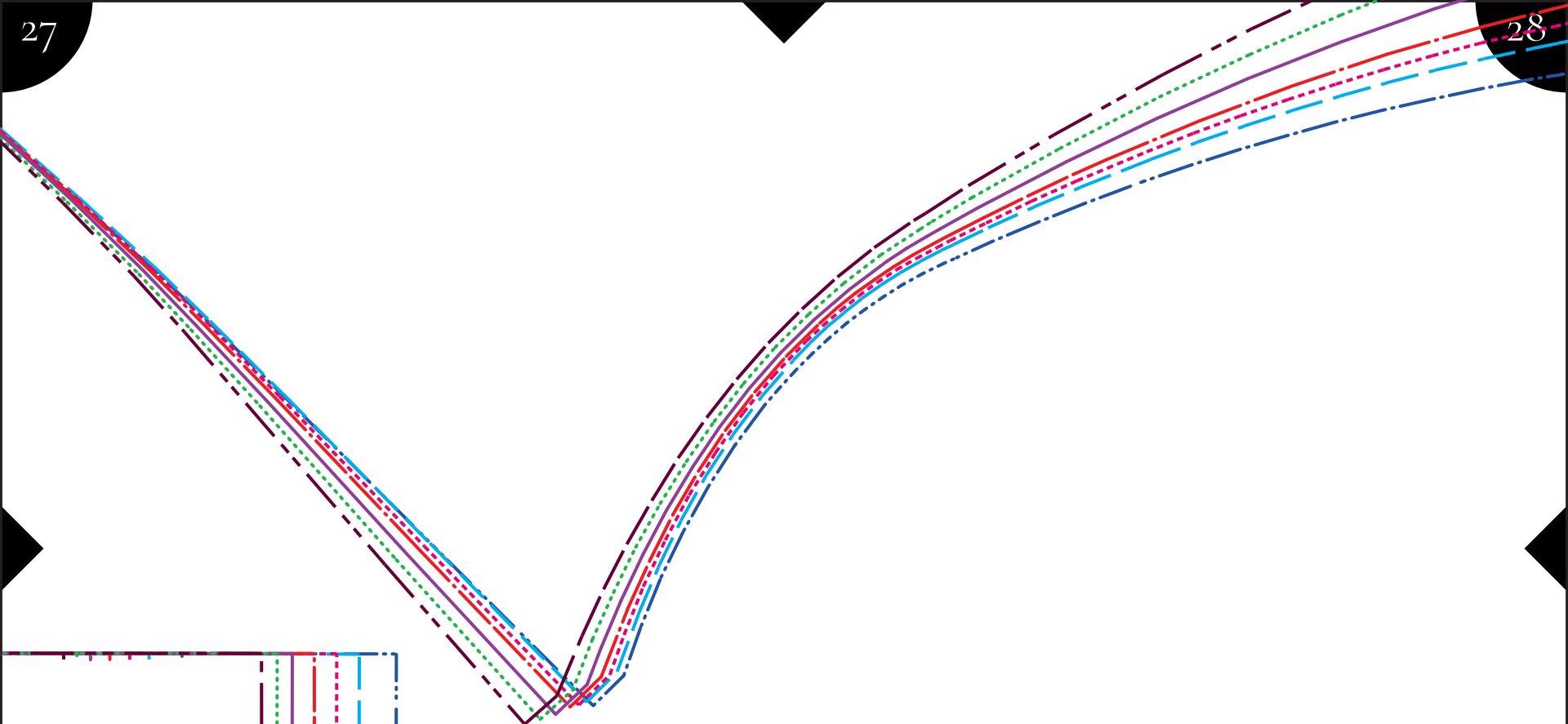


Vordere Mitte

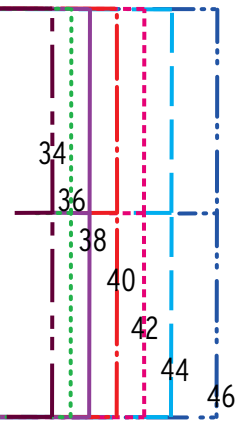


Seitennaht

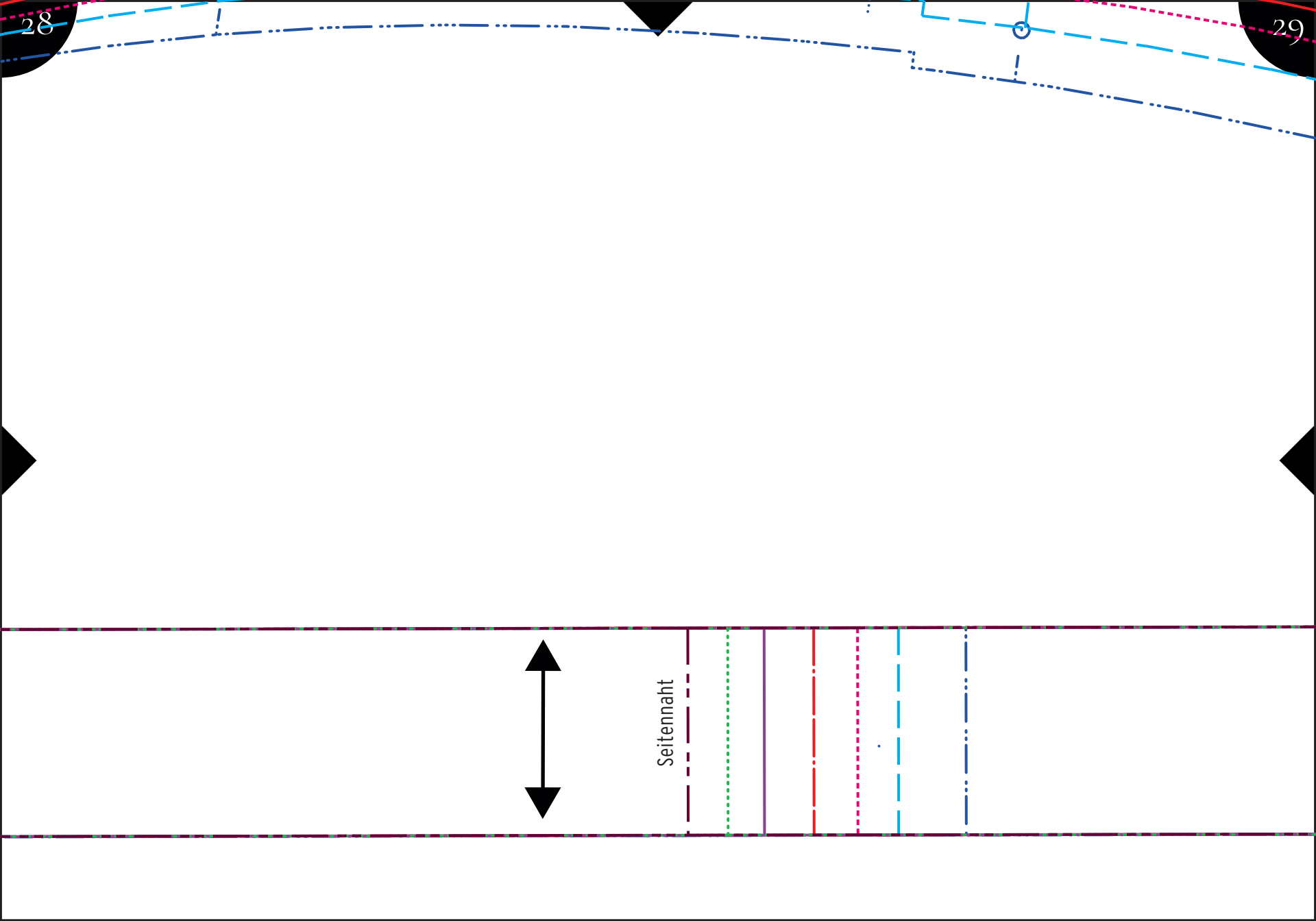


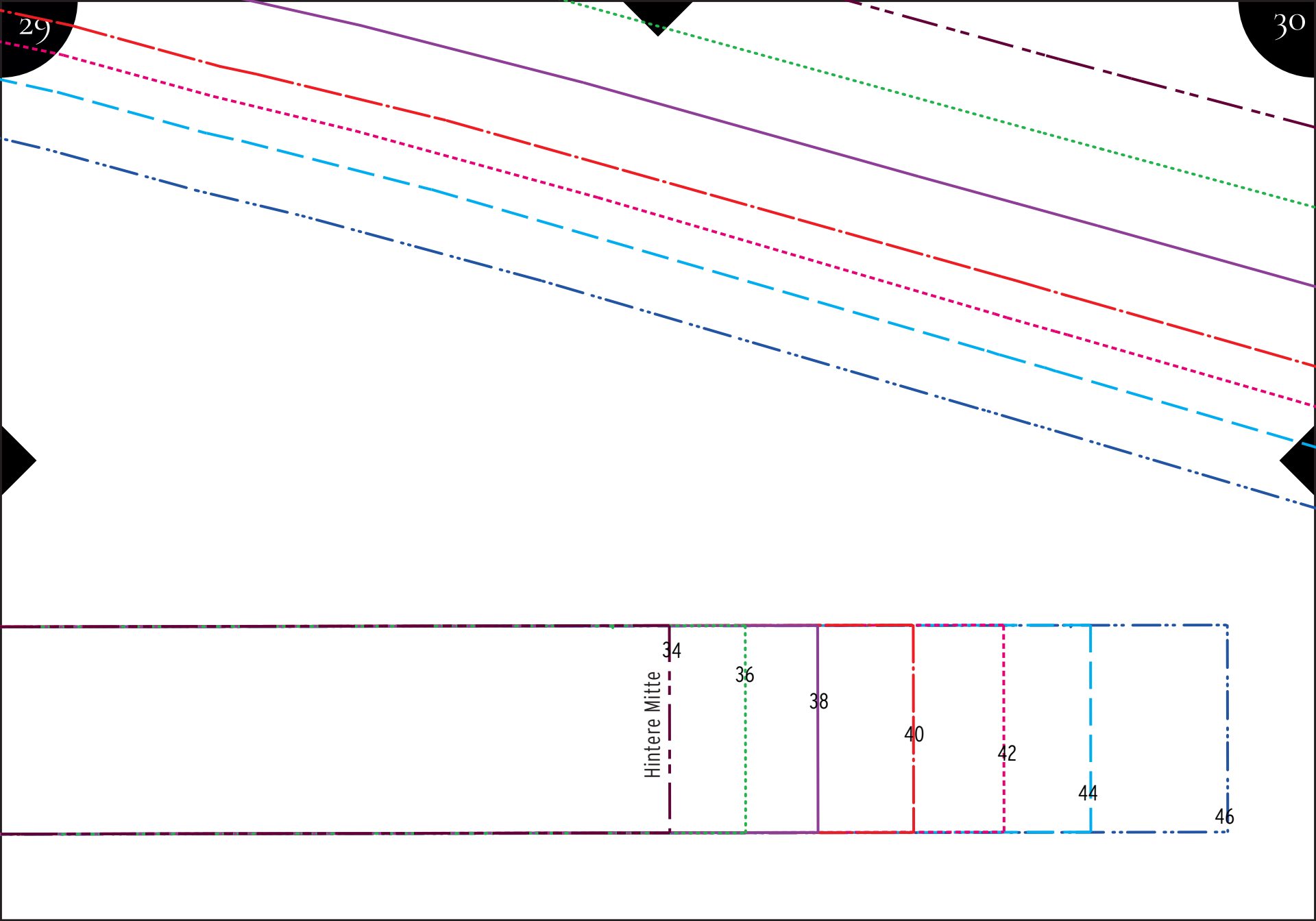


Hintere Mitte



←
 ←
 All In One Weekend Jumper // Sew me GU
 Tunnelband
 1 x Stoff im Bruch
 inkl. Nahtzugabe





29

30

Hintere Mitte

34

36

38

40

42

44

46

