

GRÖSSE	34	36	38	40	42	44	46
Körperhöhe	168	168	168	168	168	168	168
Brustumfang	80	84	88	92	96	100	104
Taille	65	68	72	76	80	84	88
Hüfte	90	94	97	100	103	106	109
Halsansatzumfang	35,5	36	36,5	37	37,5	38	38,5
Rückendlänge (Halswirbel-Taille)	41,4	41,4	41,6	41,8	42	42,2	42,4
Hüfttiefe (Halswirbel-Hüfte)	61,4	61,8	62,2	62,6	63	63,4	63,8
Seitenlänge (Taille-Fusssohle)	106	106	106	106	106	106	106
Leibhöhe (Taille-Schritt)	25,3	25,7	26,1	26,5	26,9	27,3	27,7
Schrittlänge (Schritt-Fusssohle)	80,7	80,3	79,9	79,5	79,1	78,7	78,3
Knöchelumfang	23,5	24	24,5	25	25,5	26	26,5

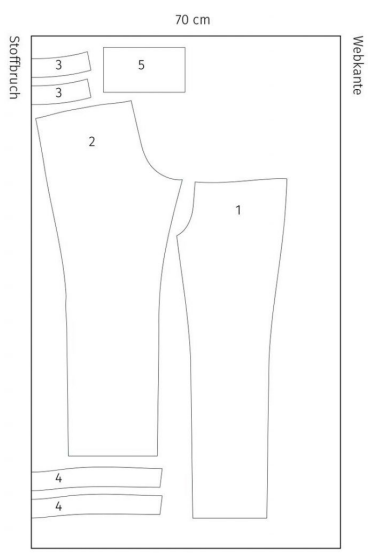
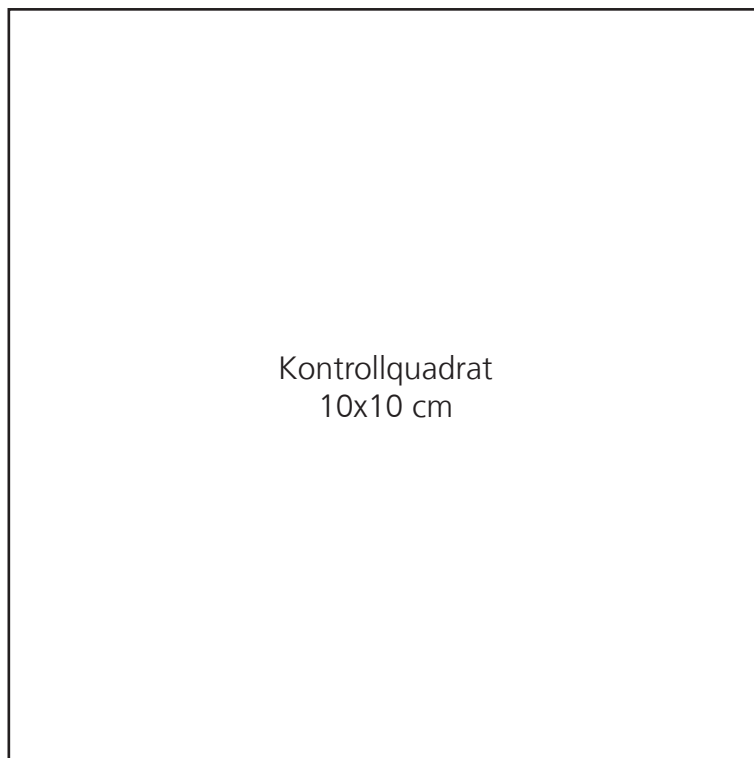
1 Schnittmuster ohne Größenanpassung, d.h. in tatsächlicher Grösse, ausdrucken.

Grösse anhand des Kontrollquadrates auf Seite 1 kontrollieren.

Entlang der gestrichelten Linien zusammenkleben gemäss Legeplan auf Seite 14.

Dieses Schnittmuster stammt aus dem Buch „Hosen nähen – schön, leicht, schnell. Alle Modelle von Größe 34-46“

© frechverlag/Franziska Fulvio



Stoff 1:

- 1 Vorderhose (2x)
- 2 Hinterhose (2x)
- 3 Vorderhosenbund (2x)
- 4 Hinterhosenbund (2x)
- 5 Saumbündchen (2x)

Vlieseline:

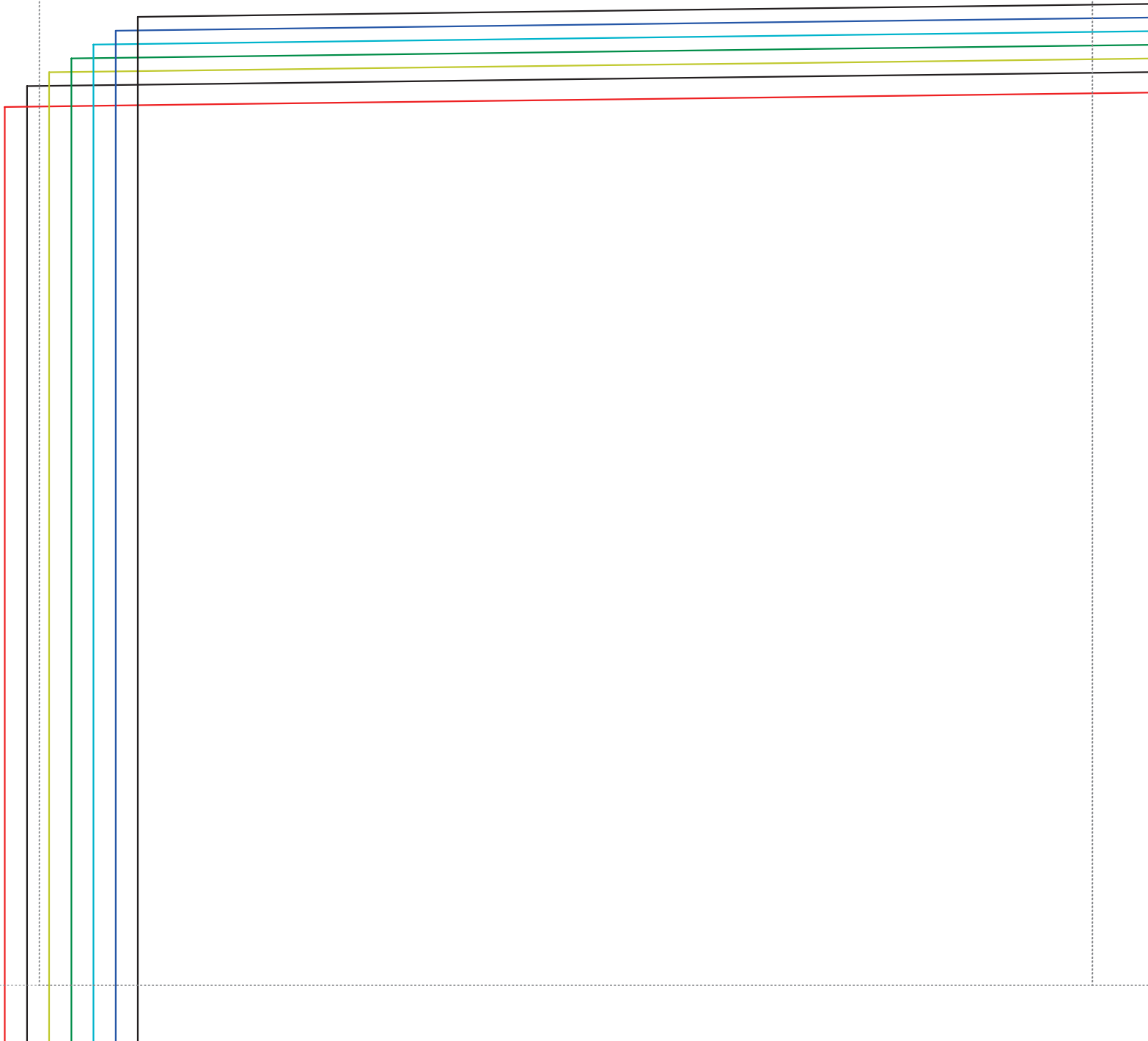
- 3 Vorderhosenbund (2x)
- 4 Hinterhosenbund (2x)

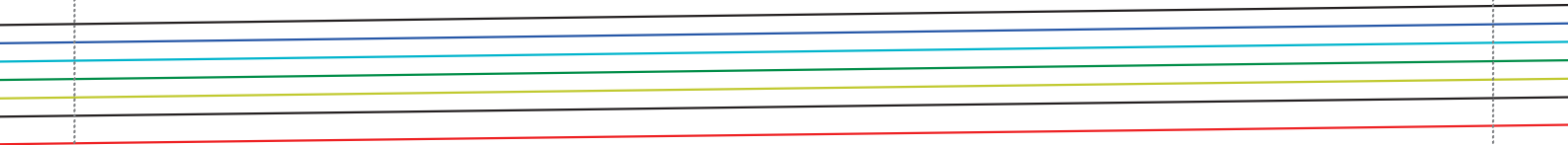
Material

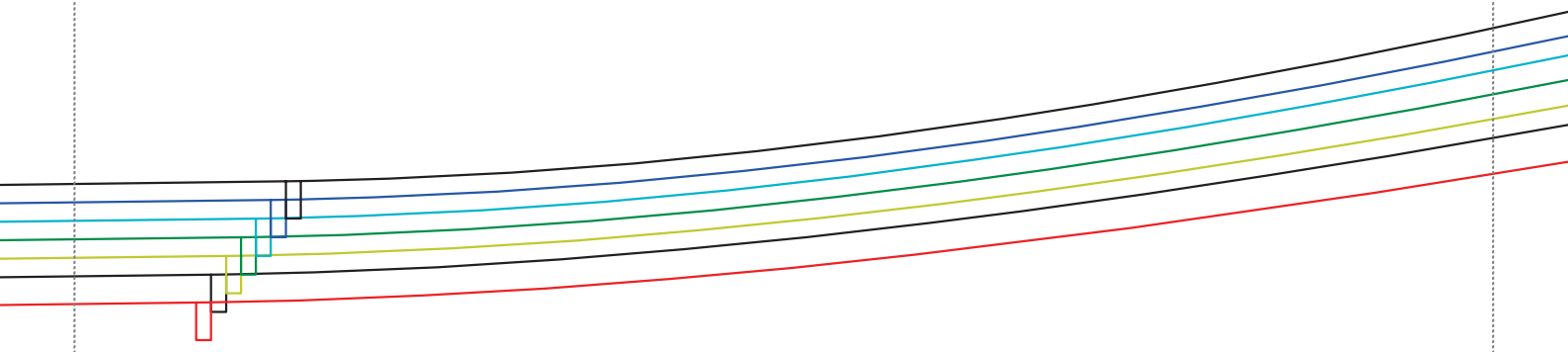
Zum Nähen der Hose benötigt ihr folgende Materialien:

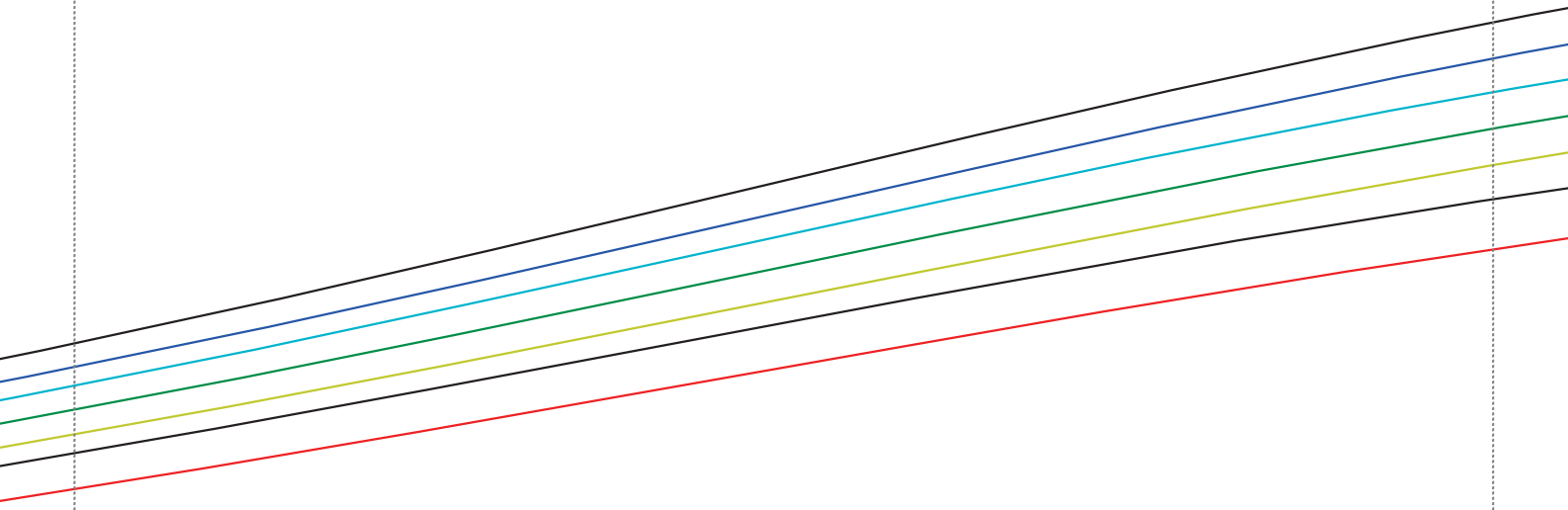
- Stoff 1: Viskosestoff in Schwarz-Weiss gemustert: 130 cm x 140 cm (bis Gr. 40) / 140 cm x 140 cm (Gr. 42) / 190 cm x 140 cm (ab Gr. 44)
- Vlieseline: 30 cm x 90 cm
- Farblich passendes Nähgarn
- Gummiband in Weiss, 4 cm breit, 90 cm (bis Gr. 40) / 110 cm (ab Gr. 42)
- Gummiband in Weiss, 5 cm breit, 60 cm (für alle Größen)

Nahtrugaben

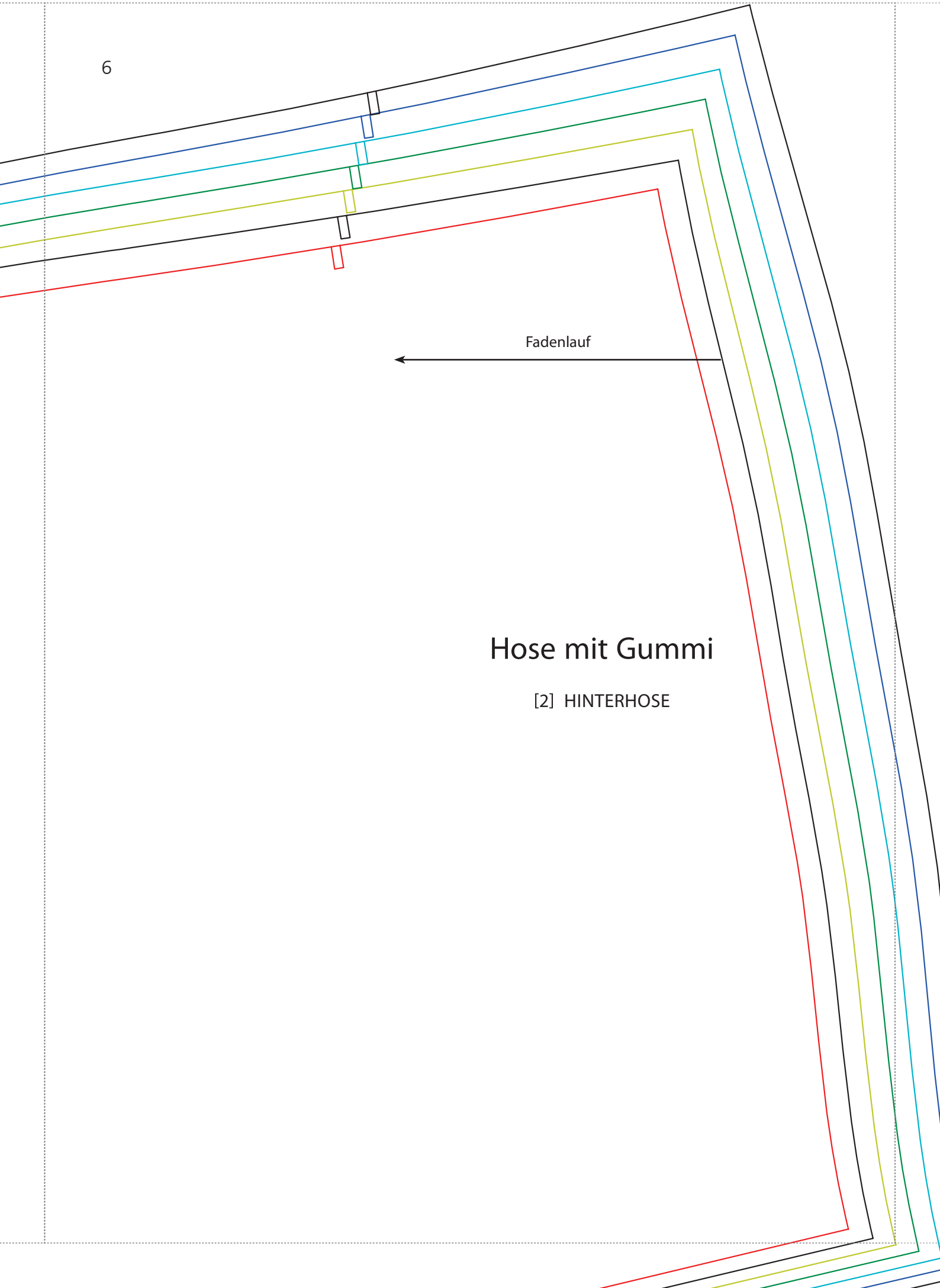








6



Fadenlauf

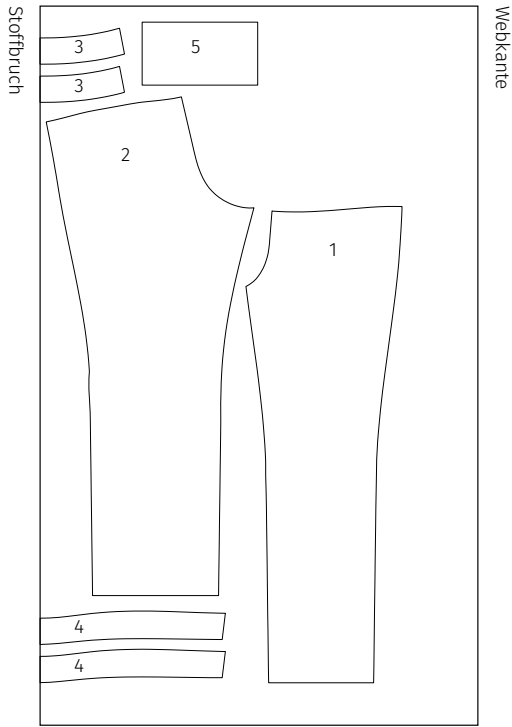
Hose mit Gummi

[2] HINTERHOSE

7

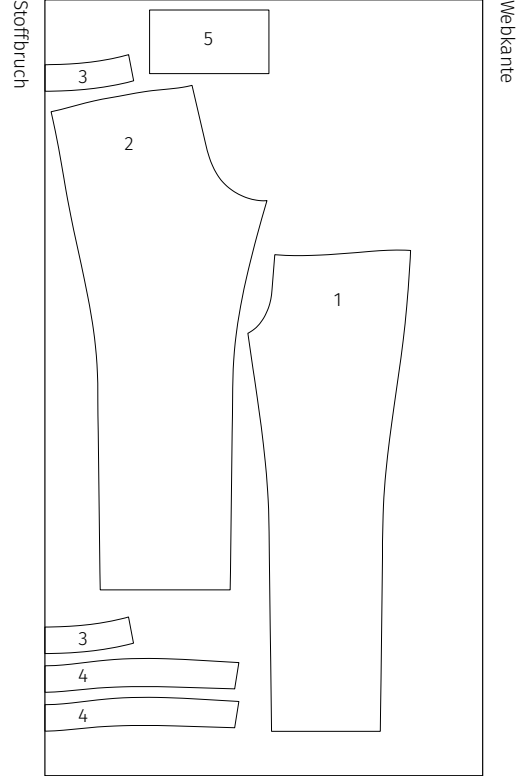
Größe 34-40

70 cm



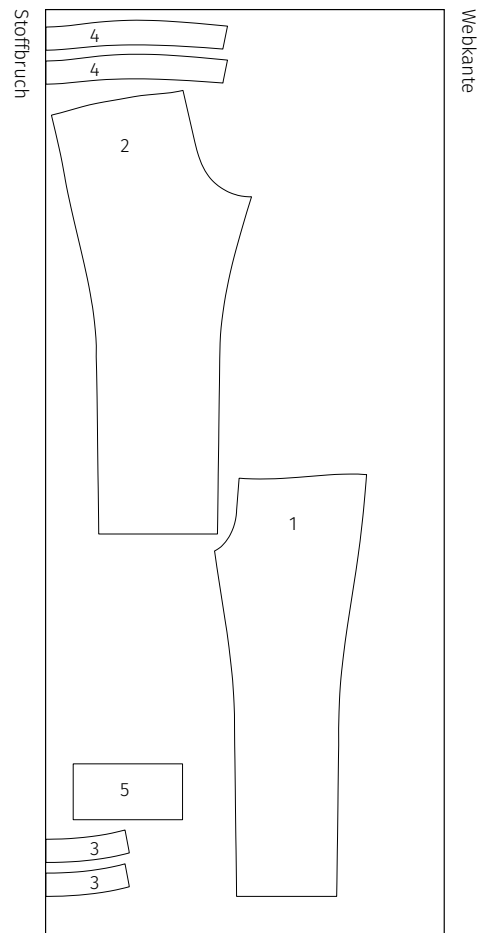
Größe 42

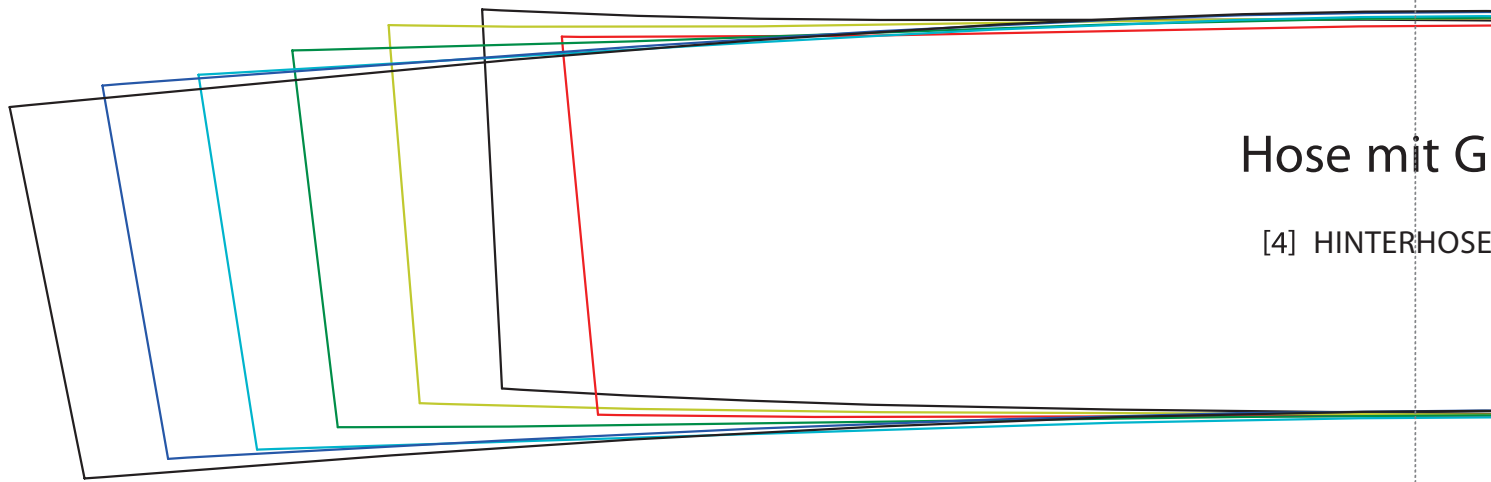
70 cm



Größe 44-46

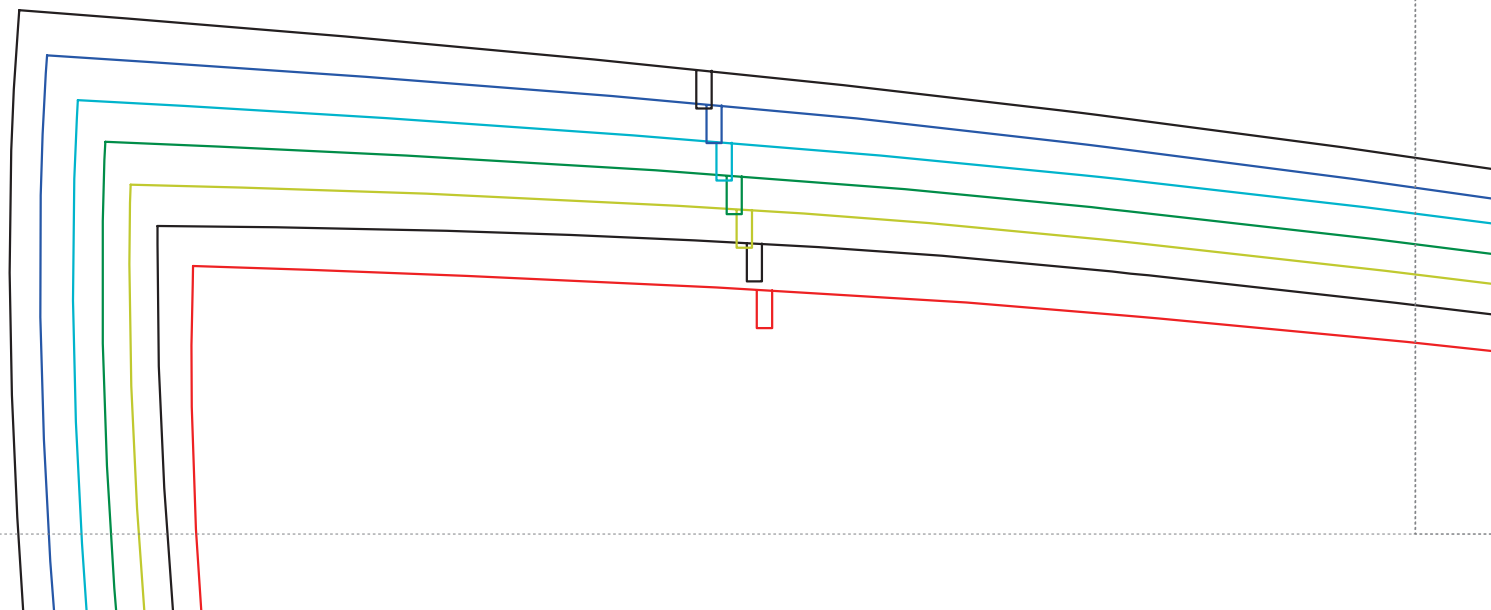
70 cm





Hose mit G

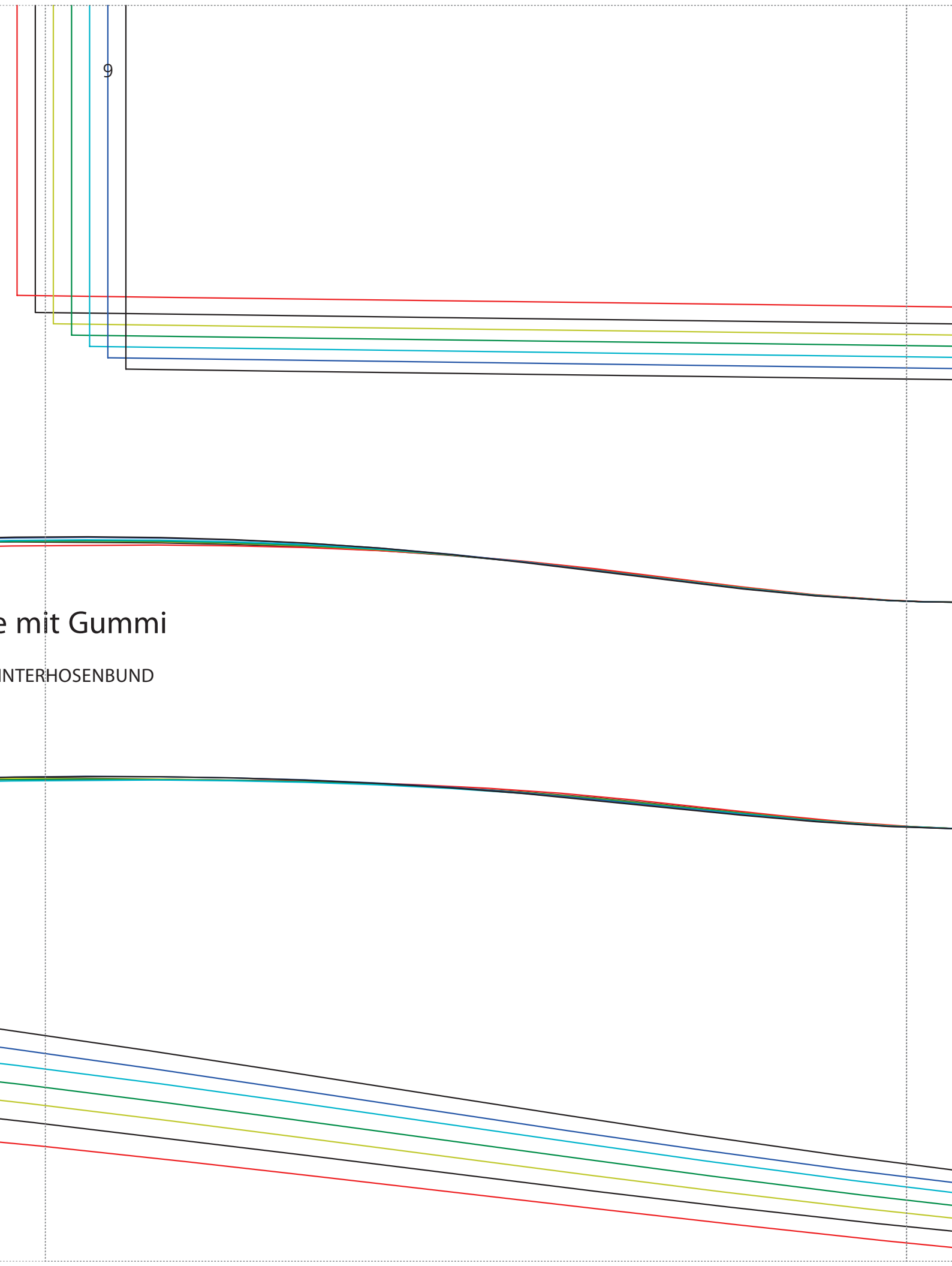
[4] HINTERHOSE

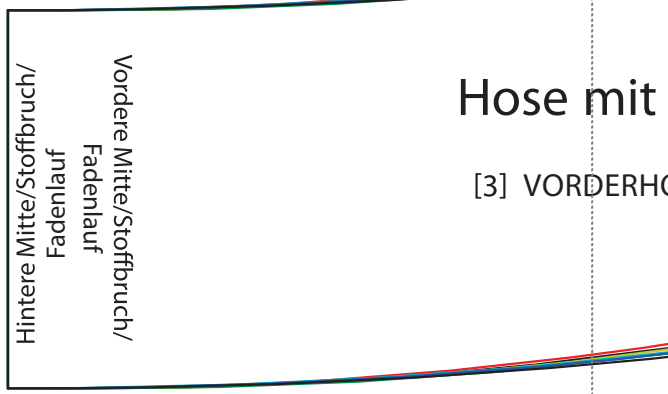
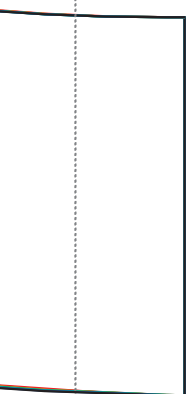
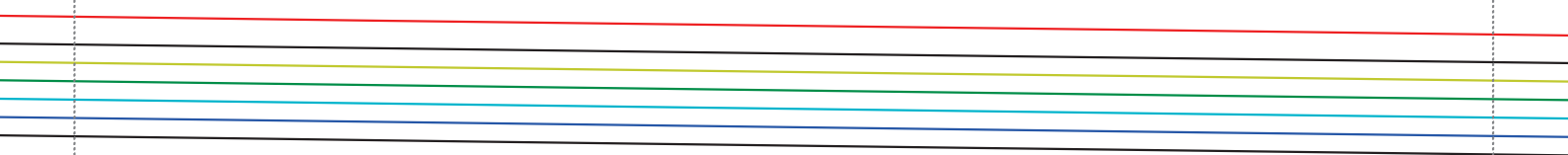


9

e mit Gummi

INTERHOSENBUND

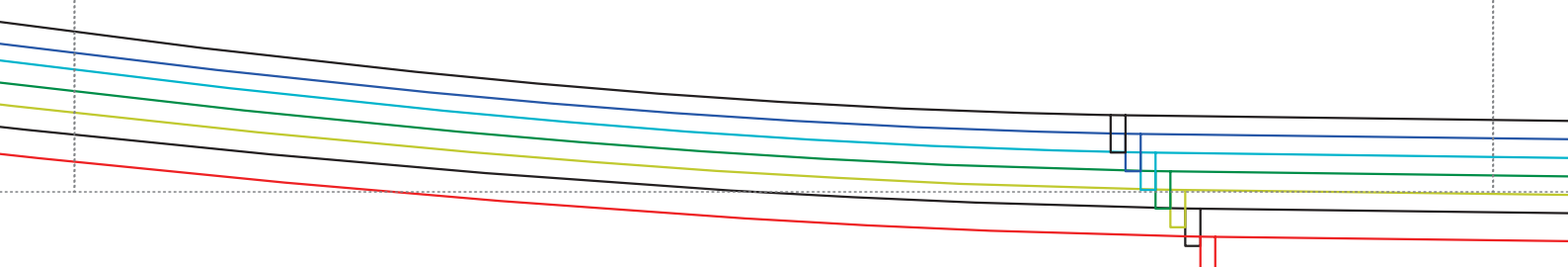


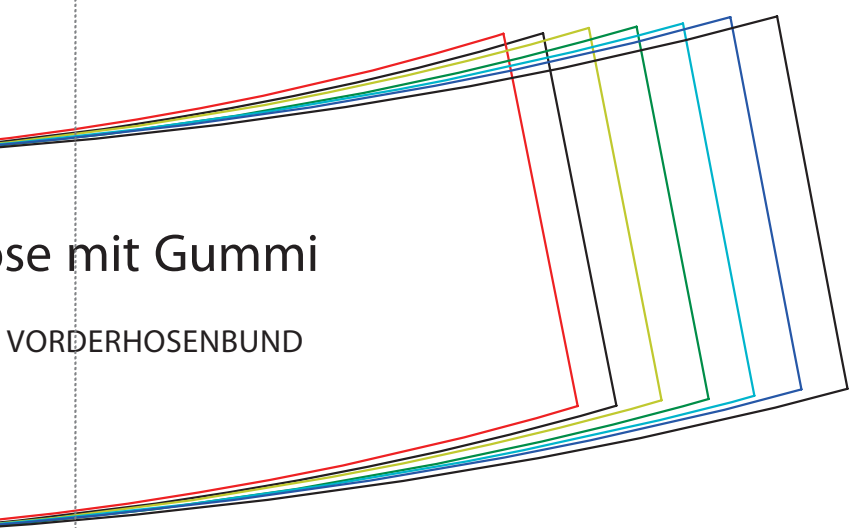
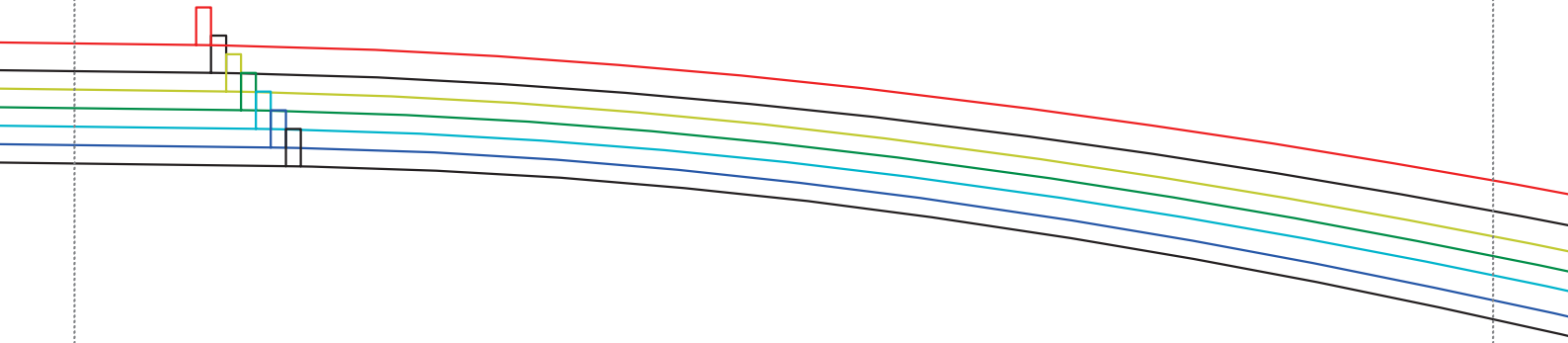


Hintere Mitte/Stoffbruch/
Fadenlauf
Vordere Mitte/Stoffbruch/
Fadenlauf

Hose mit

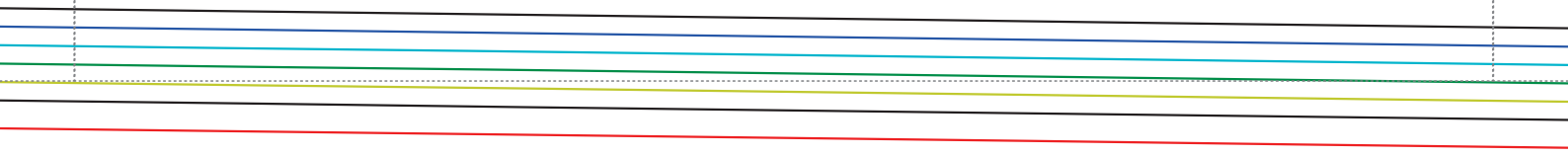
[3] VORDERH

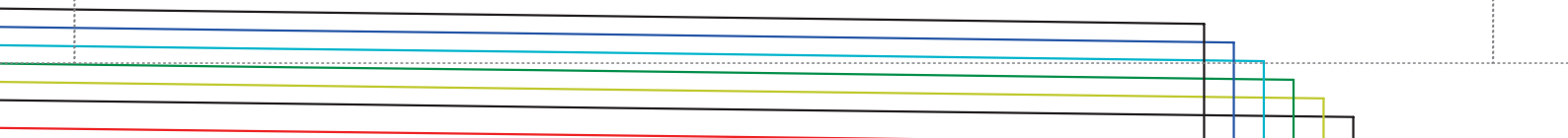
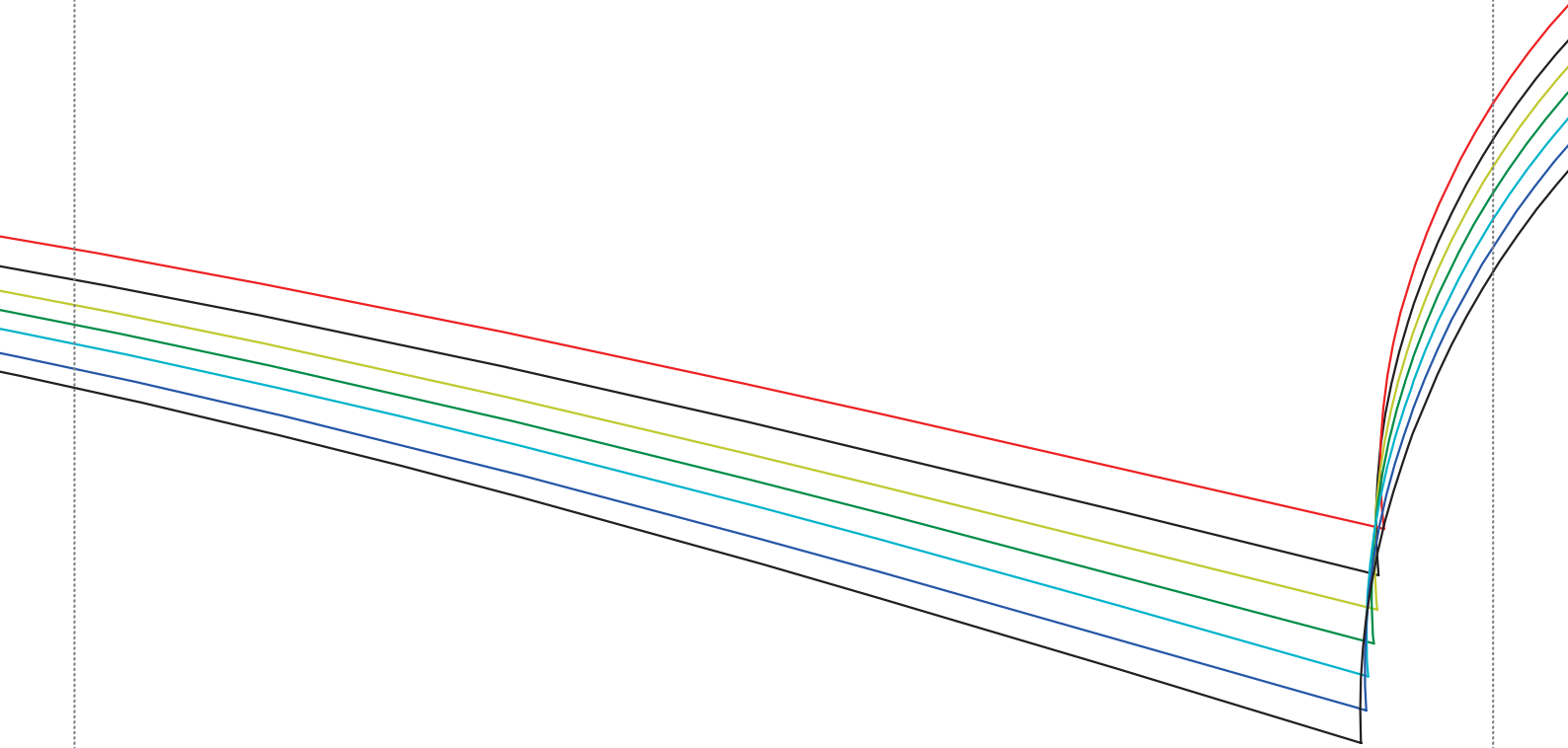




se mit Gummi

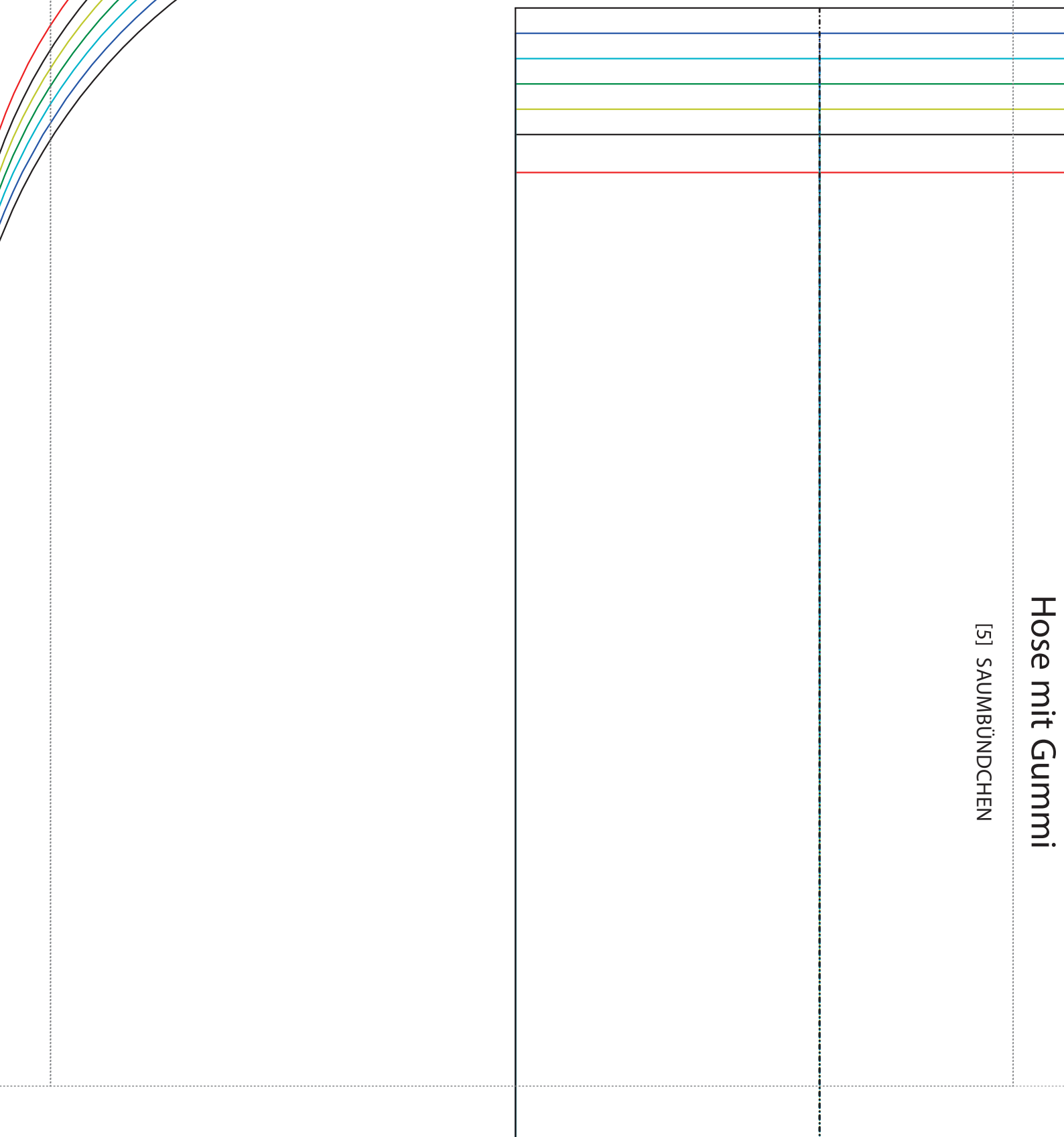
VORDERHOSENBUND



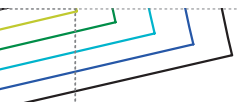


Hose mit Gummi

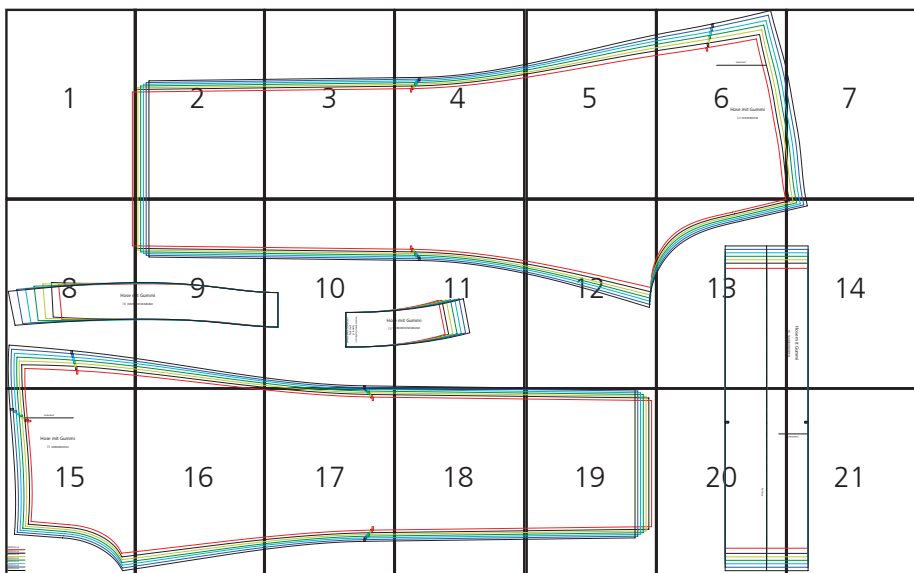
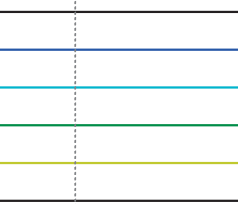
[5] SAUMBÜNDCHEN



13



14



Hose mit Gummi

[5] SAUMBÜNDCHEN

15

Fadenlauf

Hose mit Gummi

[1] VORDERHOSE

GRÖSSE 34

GRÖSSE 36

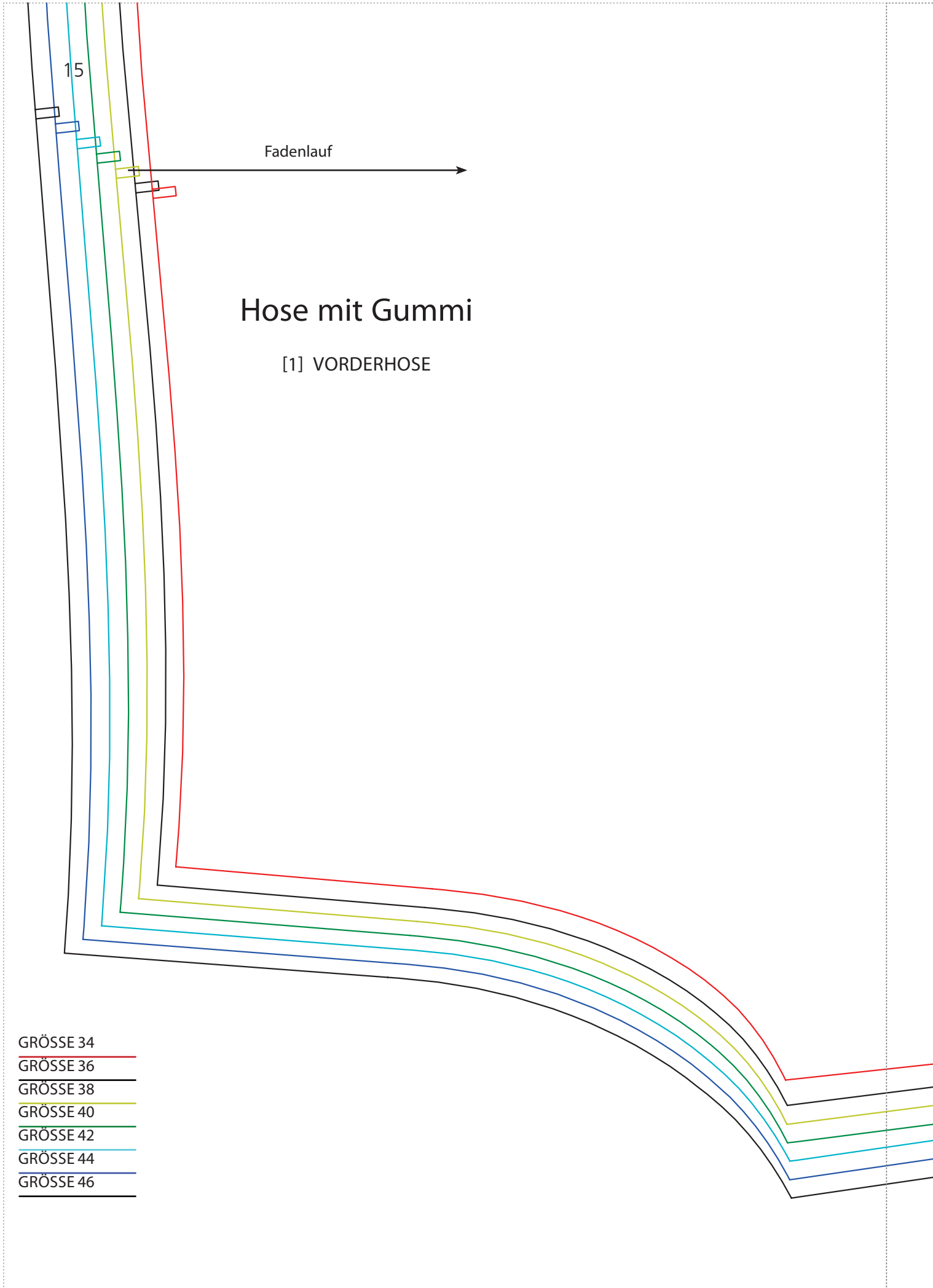
GRÖSSE 38

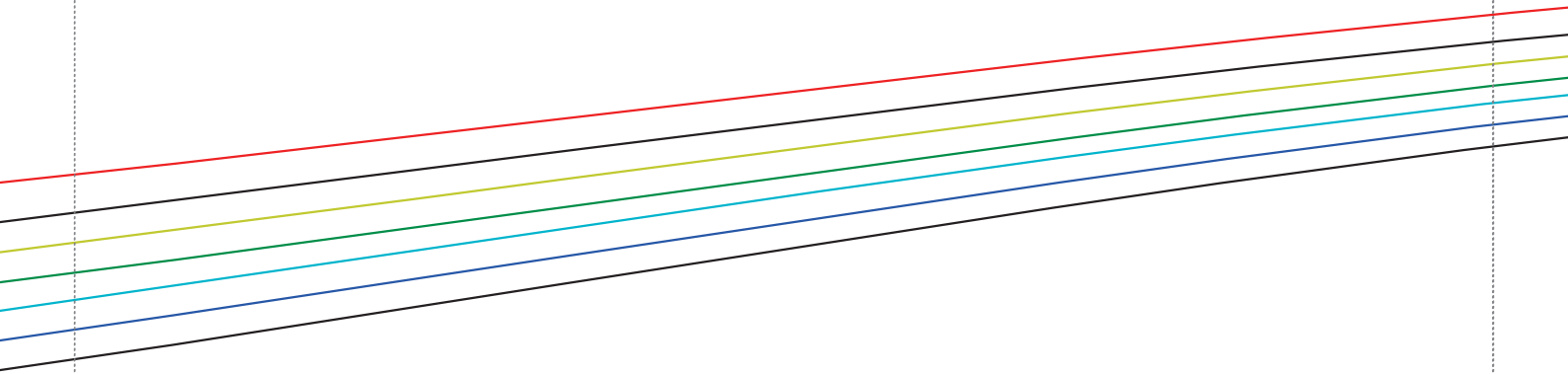
GRÖSSE 40

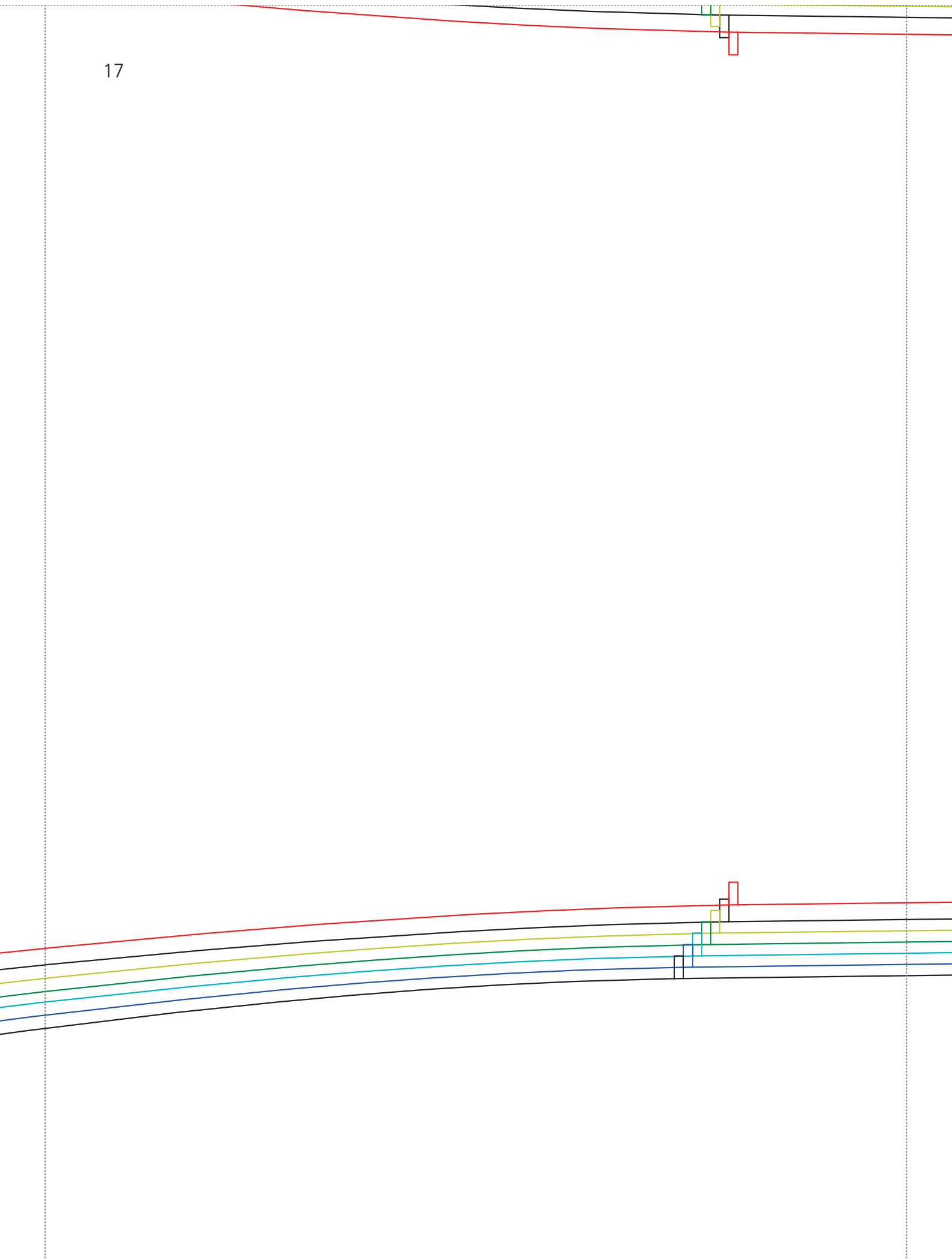
GRÖSSE 42

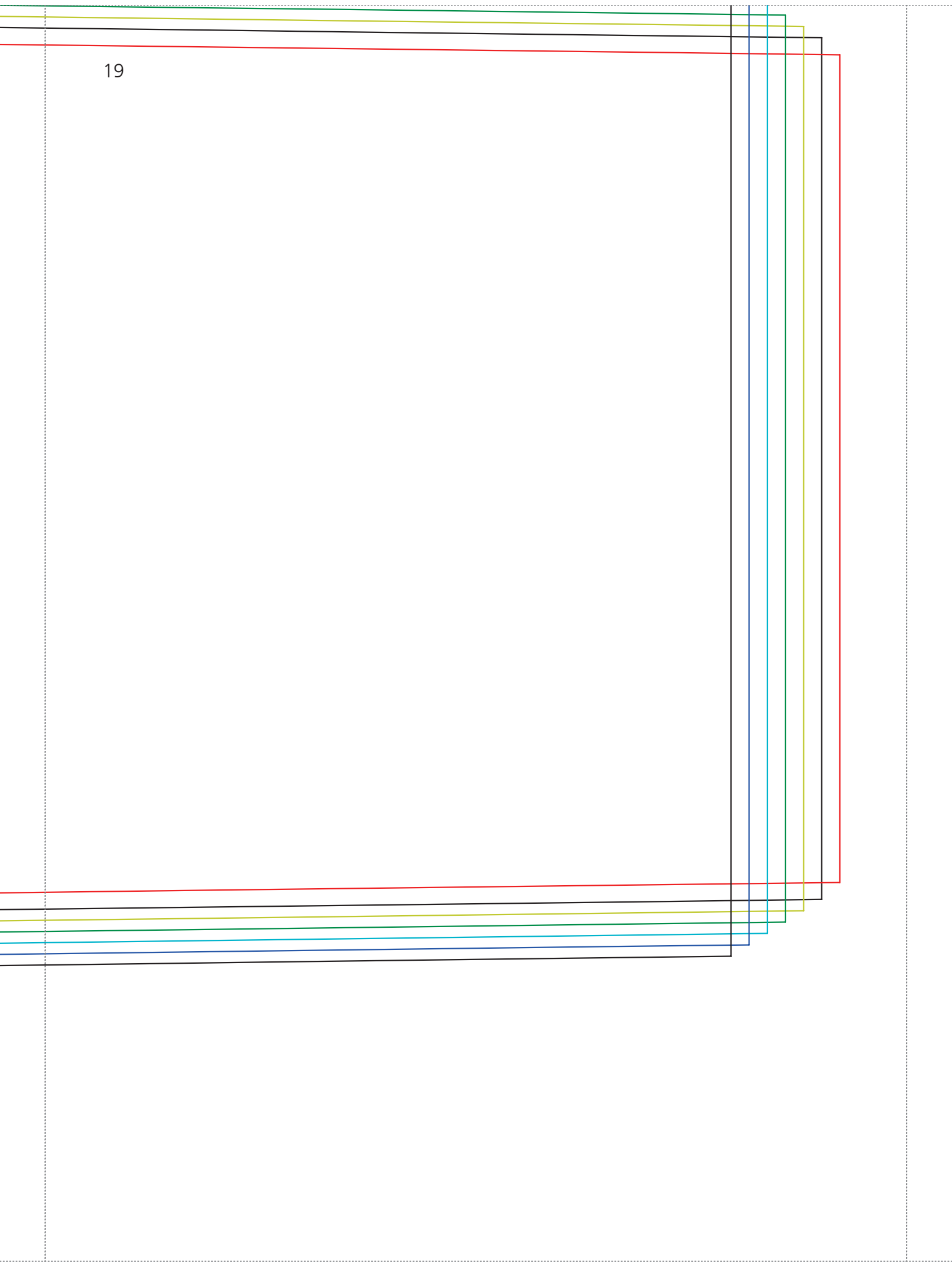
GRÖSSE 44

GRÖSSE 46





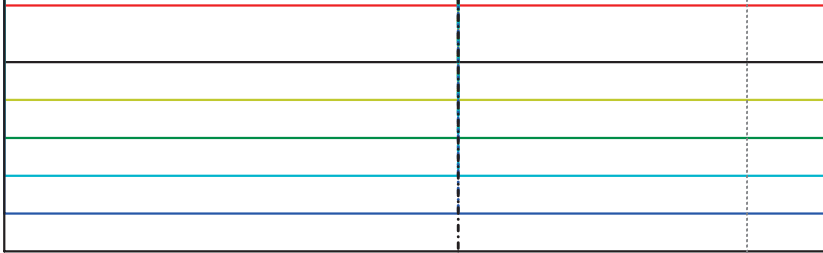






Faltlinie

Fadenlauf



21



Fadenlauf

