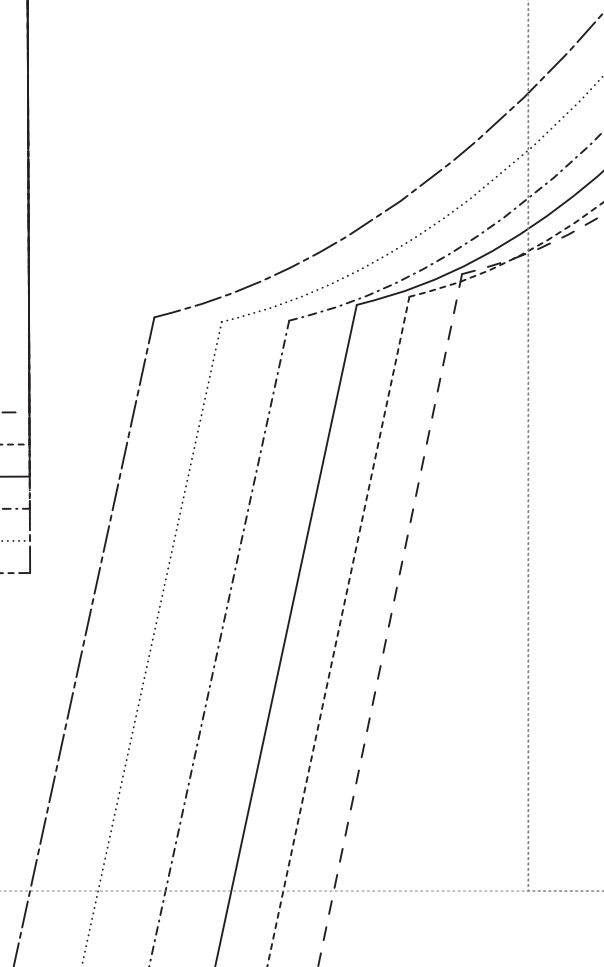


1

Fadenlauf
←

Toni
ARMBÜNDCHEN
2x

34	-----
36	-----
38	-----
40	-----
42	-----
44	-----



VM/Bruch

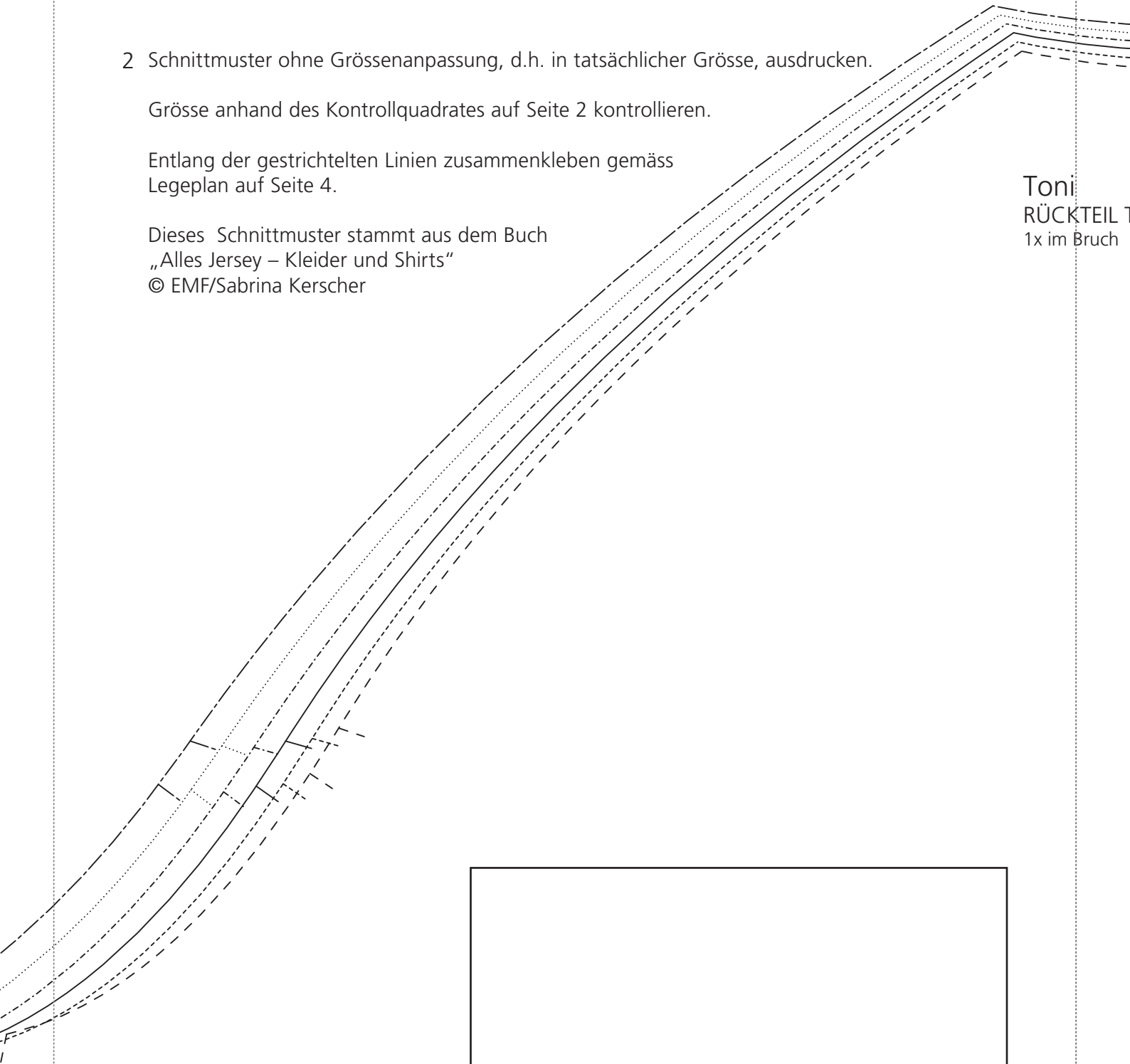
2 Schnittmuster ohne Grössenanpassung, d.h. in tatsächlicher Grösse, ausdrucken.

Grösse anhand des Kontrollquadrates auf Seite 2 kontrollieren.

Entlang der gestrichelten Linien zusammenkleben gemäss
Legeplan auf Seite 4.

Dieses Schnittmuster stammt aus dem Buch
„Alles Jersey – Kleider und Shirts“
© EMF/Sabrina Kerscher

Toni
RÜCKTEIL T
1x im Bruch



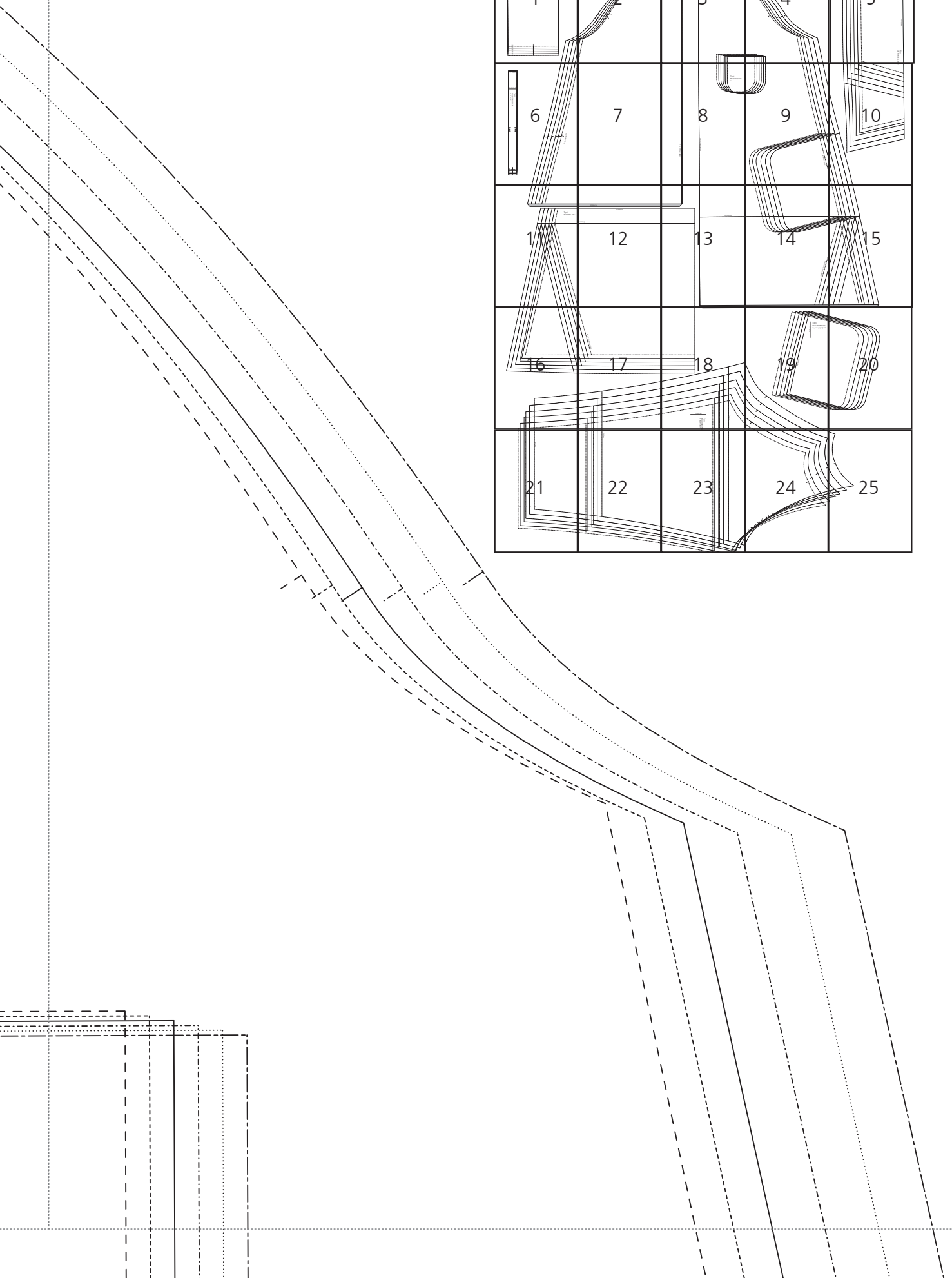
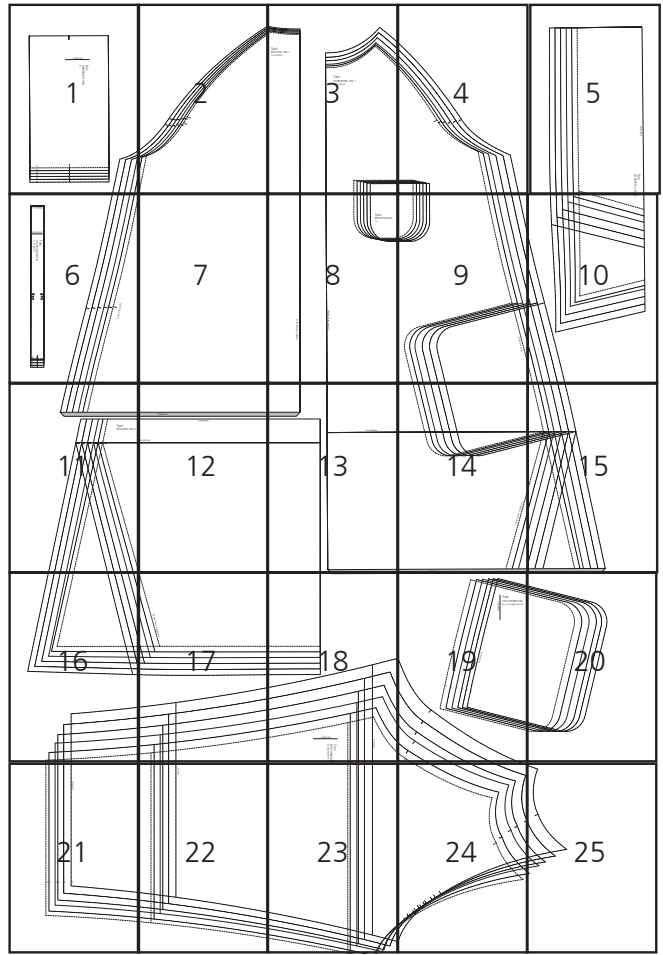
Toni
RÜCKTEIL TEIL 1
1x im Bruch

3

Toni
VORDERTEIL TEIL 1
1x im Bruch

Toni

4



Klebkante

Toni
VORDERTEIL TEIL 2

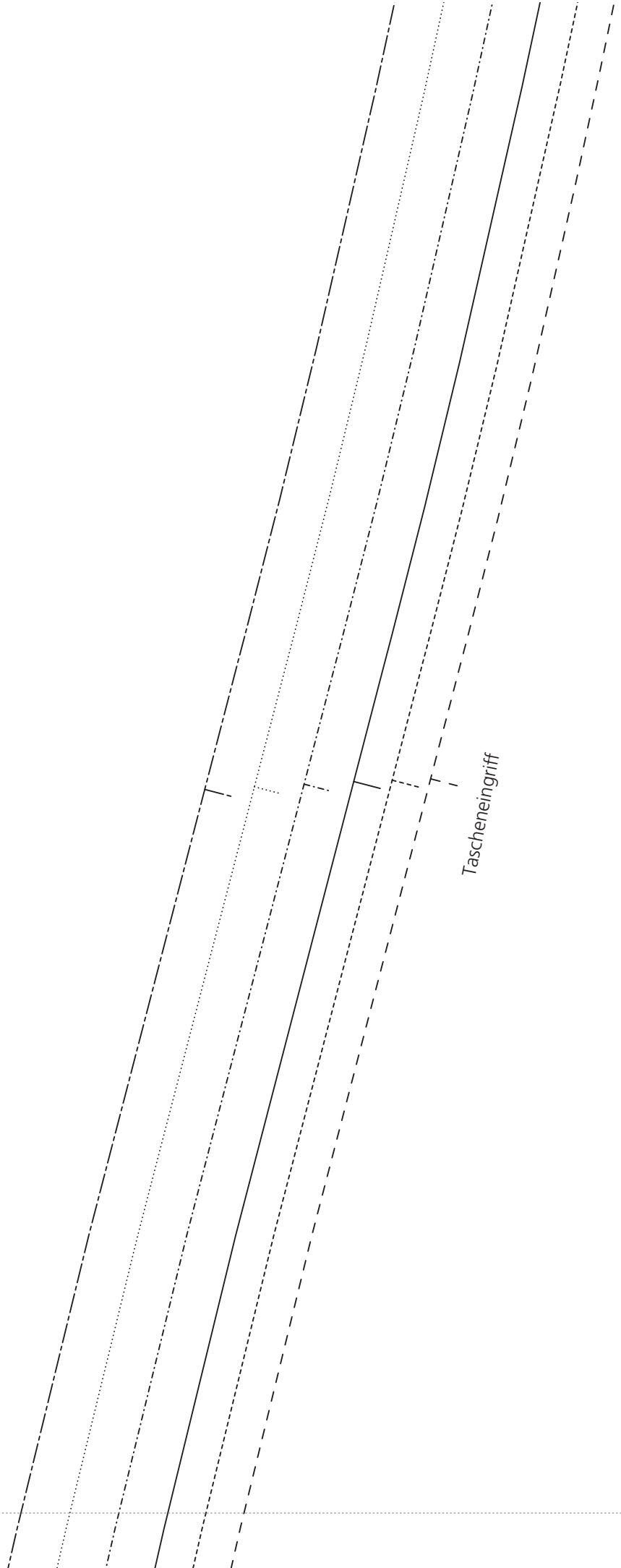
6

Fadenlauf
←

Toni
HALSBÜNDCHEN
1x im Bruch



34	---
38	---
40	---
42	---
44	---

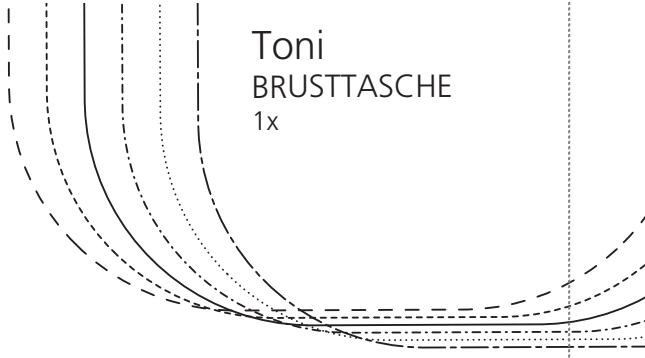


Tascheneingriff

H/M/Bruch/Fadenlauf

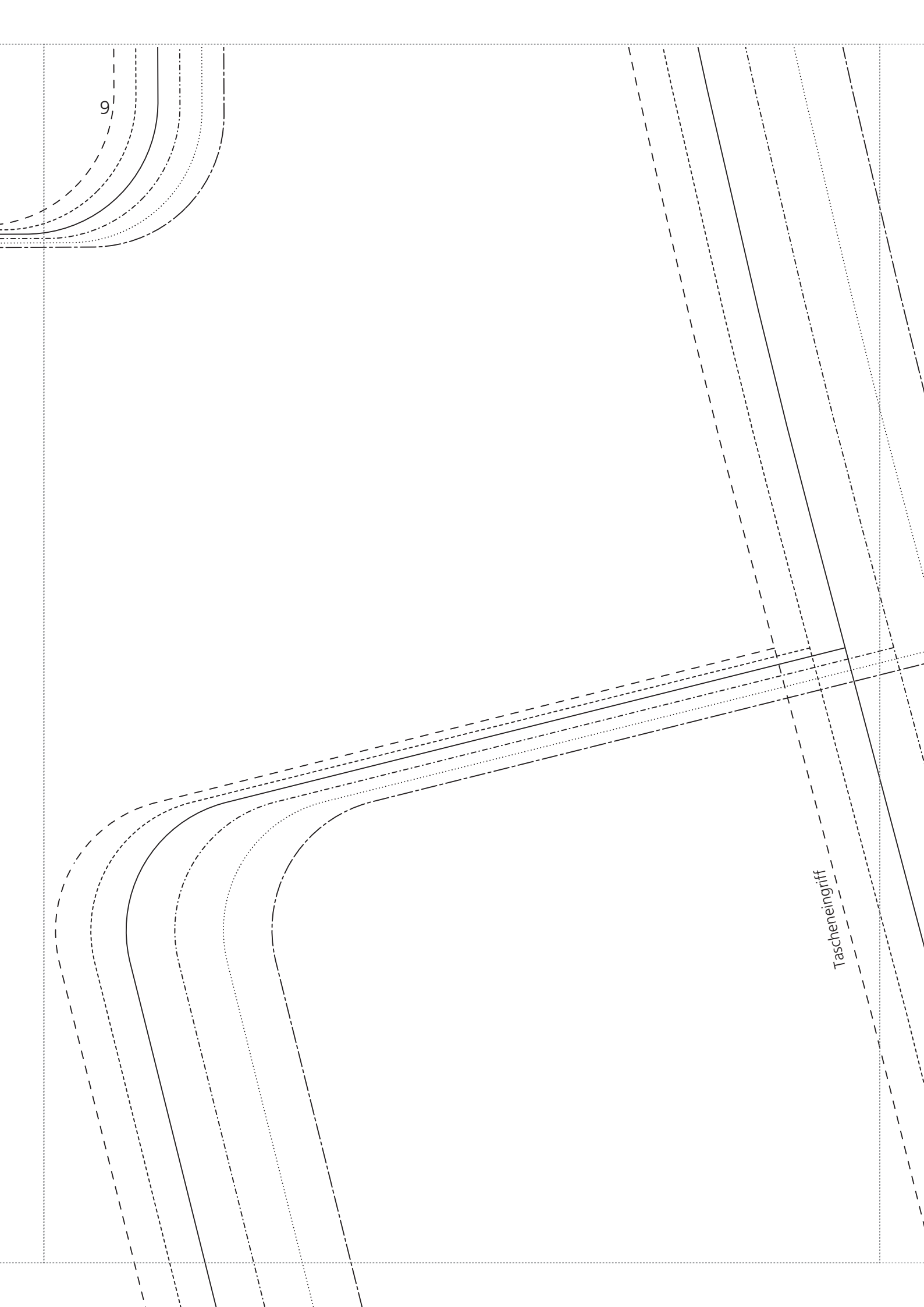
V/M/Bruch/Fadenlauf

Toni
BRUSTTASCHE
1x

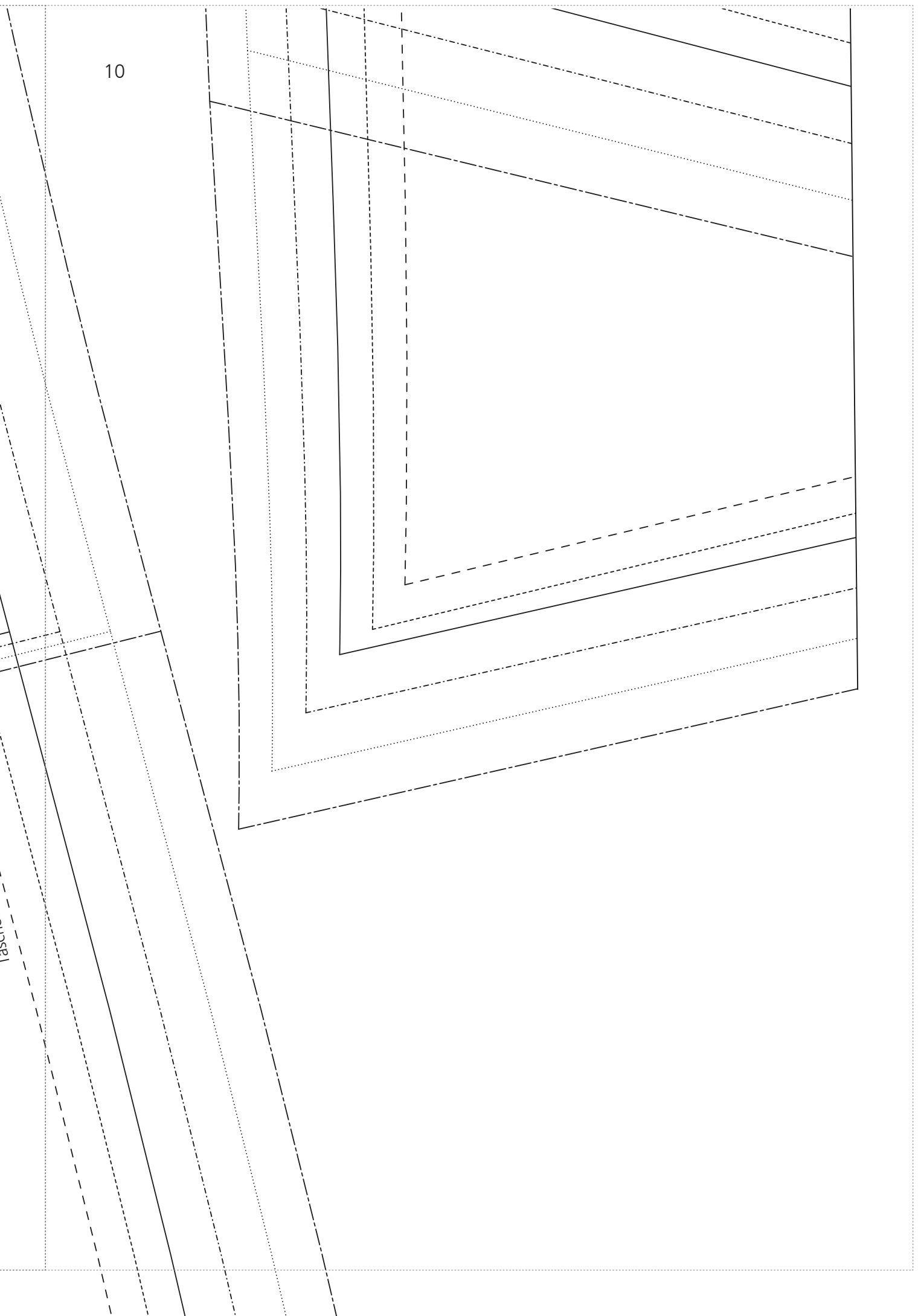


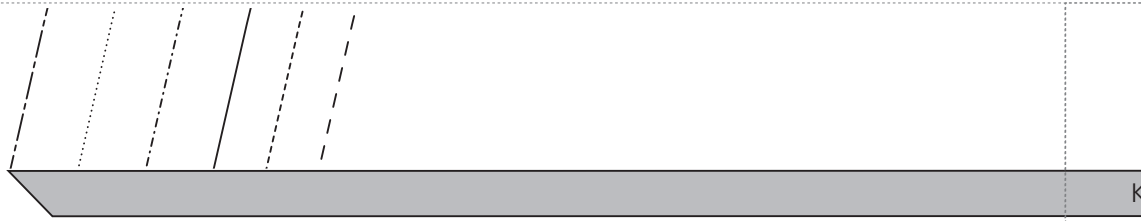
9

Tascheneingriff



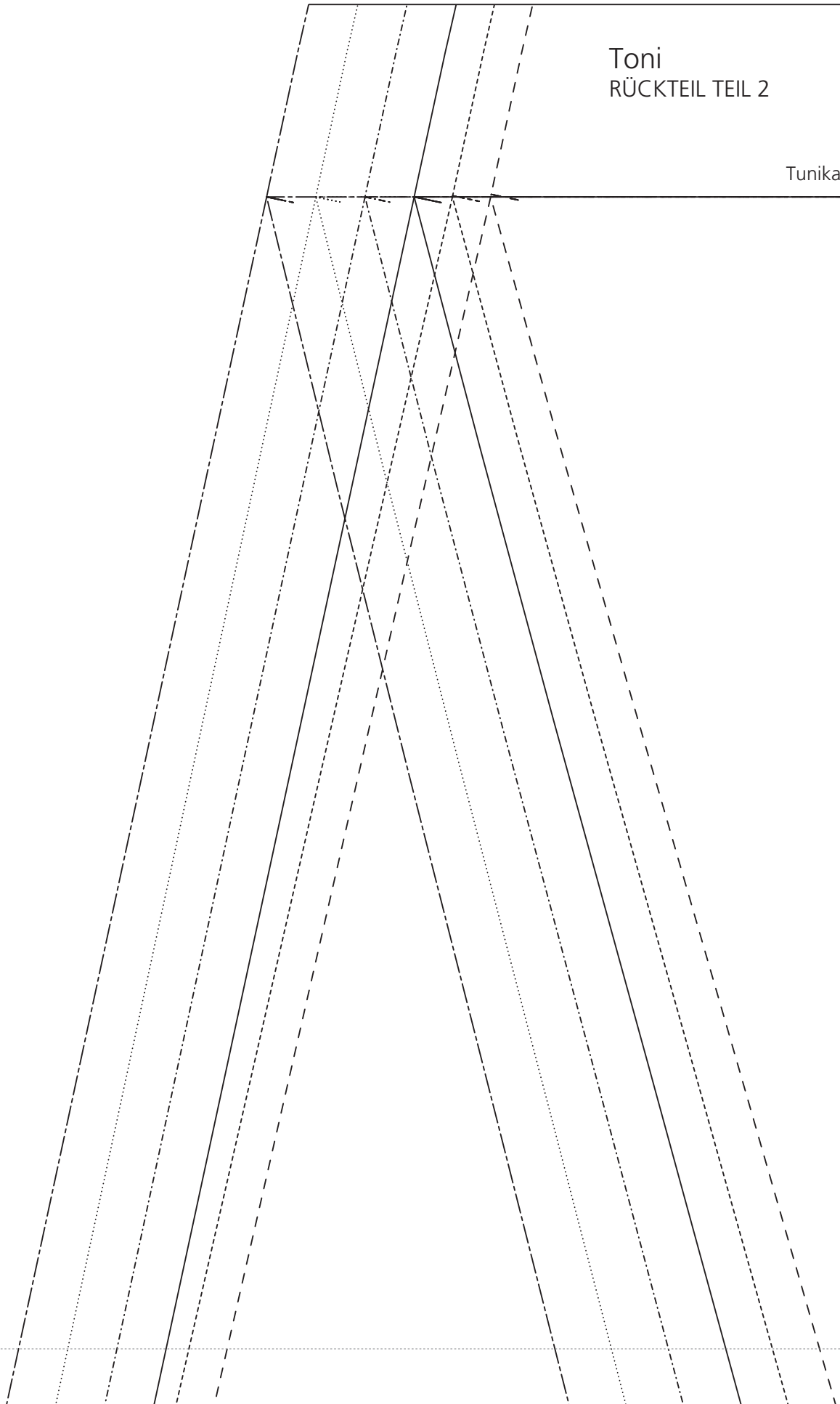
10





Toni
RÜCKTEIL TEIL 2

Tunikalänge



12

Klebkante

Klebkante

änge

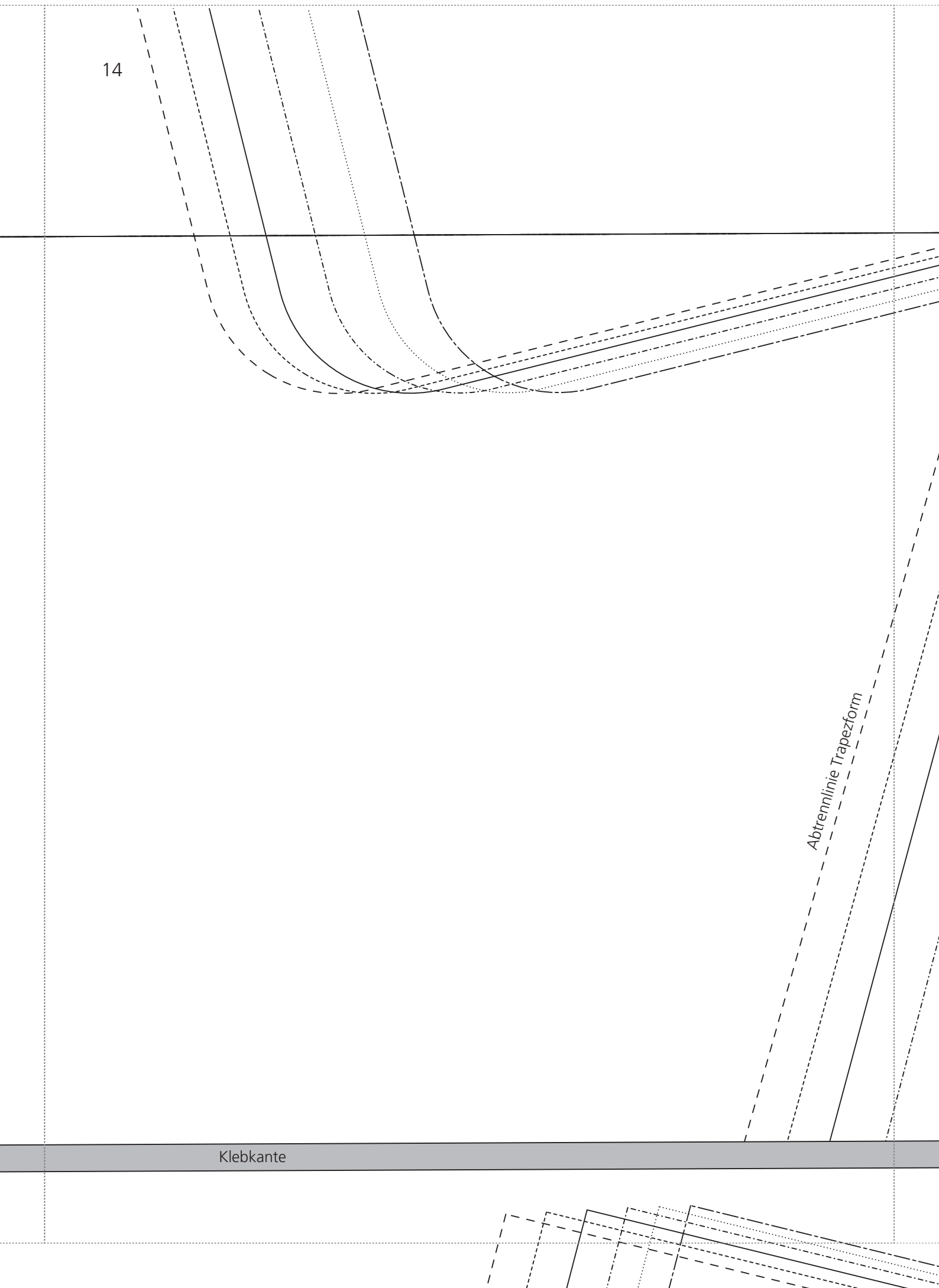
13

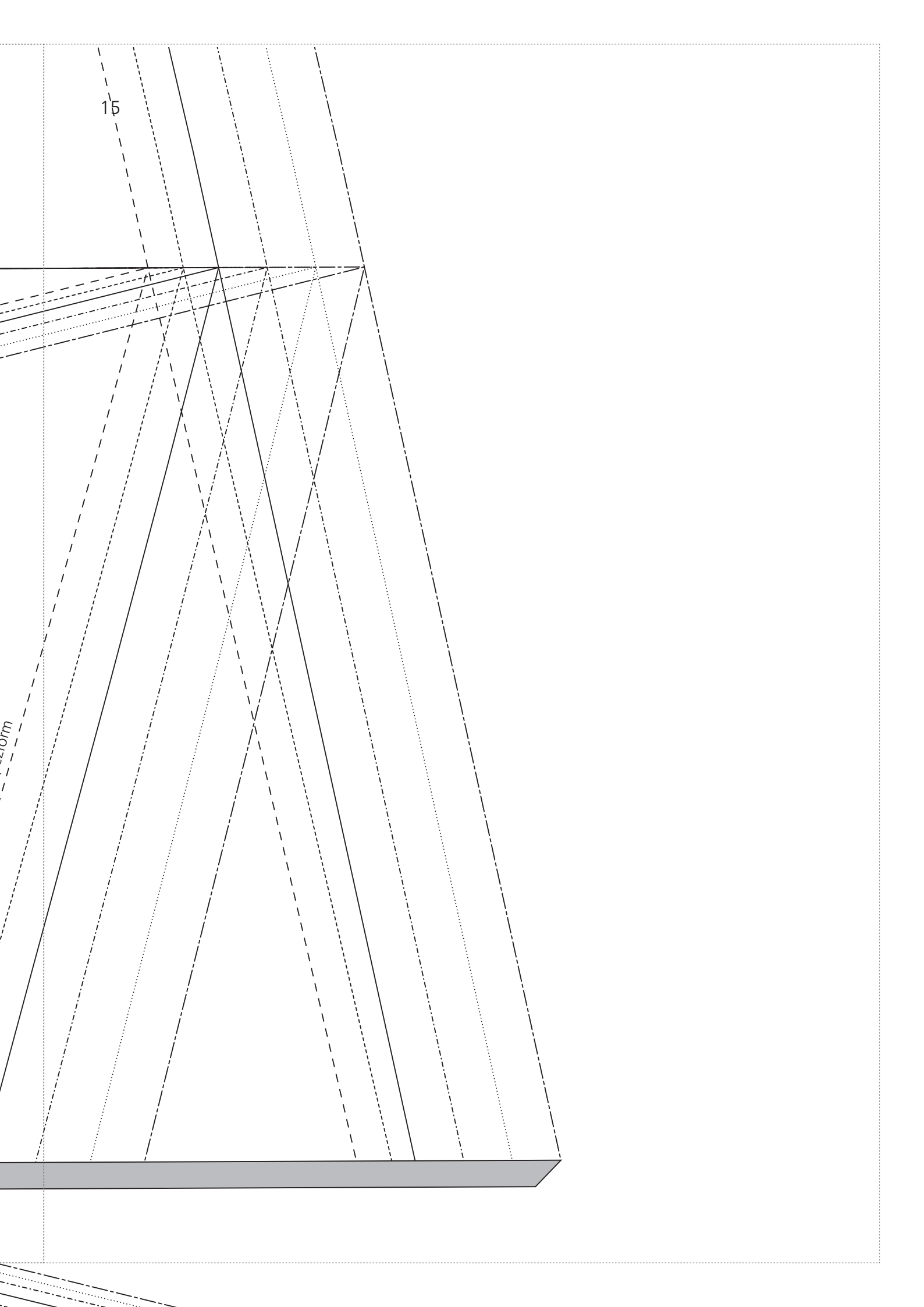
Tunikalänge

14

Abtrennlinie Trapezform

Klebkante



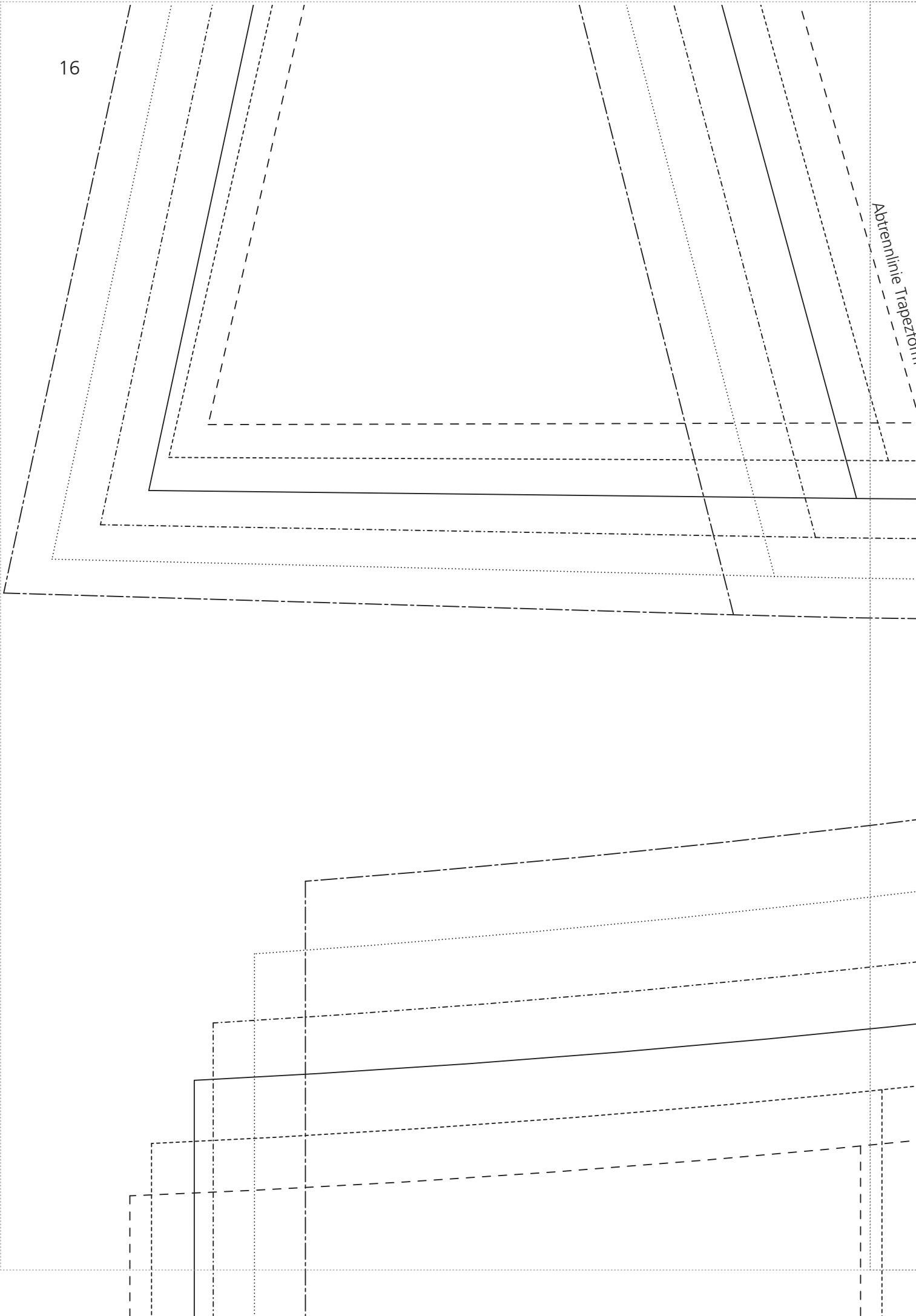


15

form

16

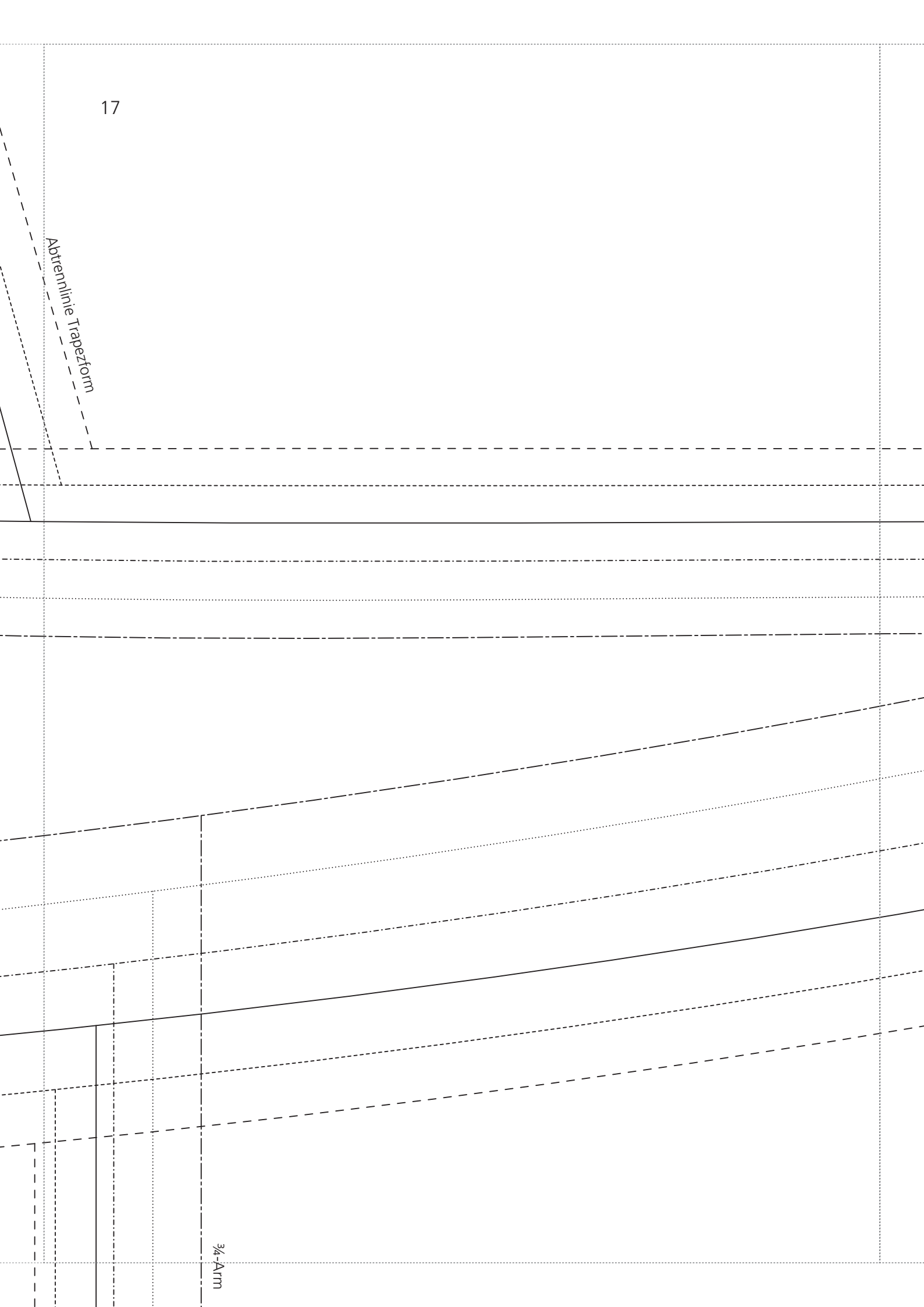
Abtrennlinie Trapezform

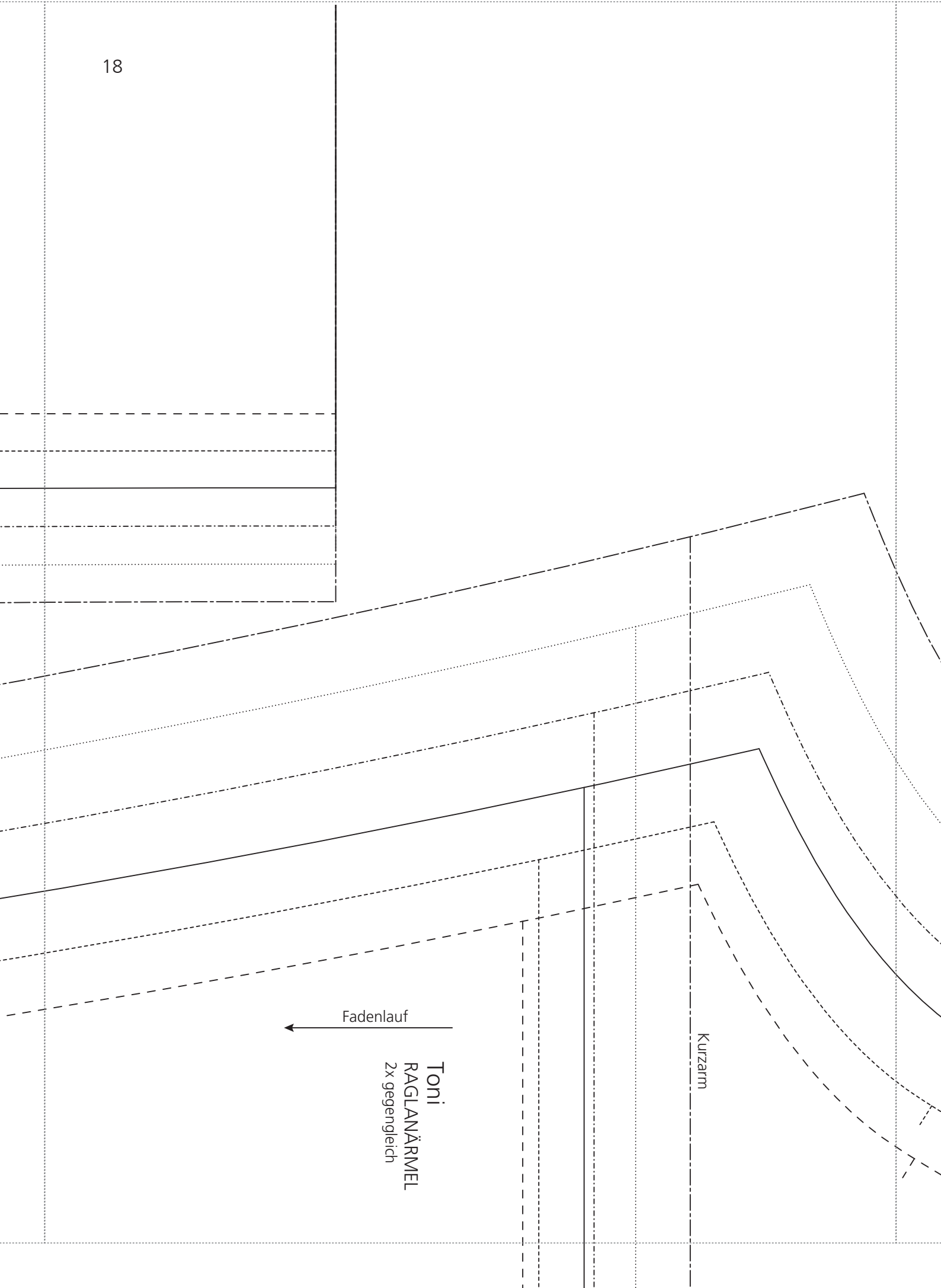


17

Abtrennlinie Trapezform

$\frac{3}{4}$ -Arm





Fadenlauf

Kurzarm

Toni
RAGLANÄRMEL
2x gegengleich

Toni
TASCHENBEUTEL
4x, je 2x gegengleich

Fadenlauf
↓

Seitennaht

34

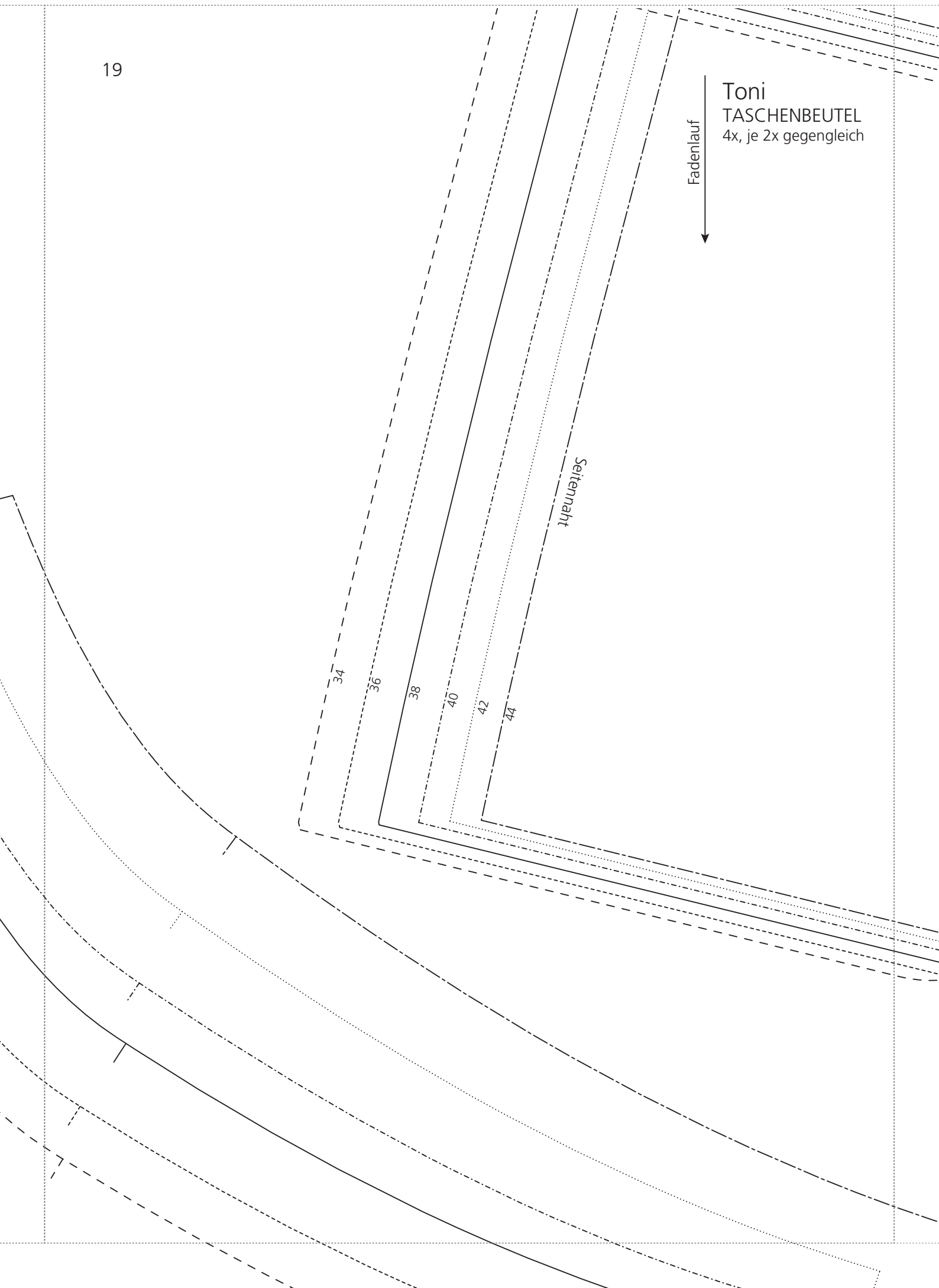
36

38

40

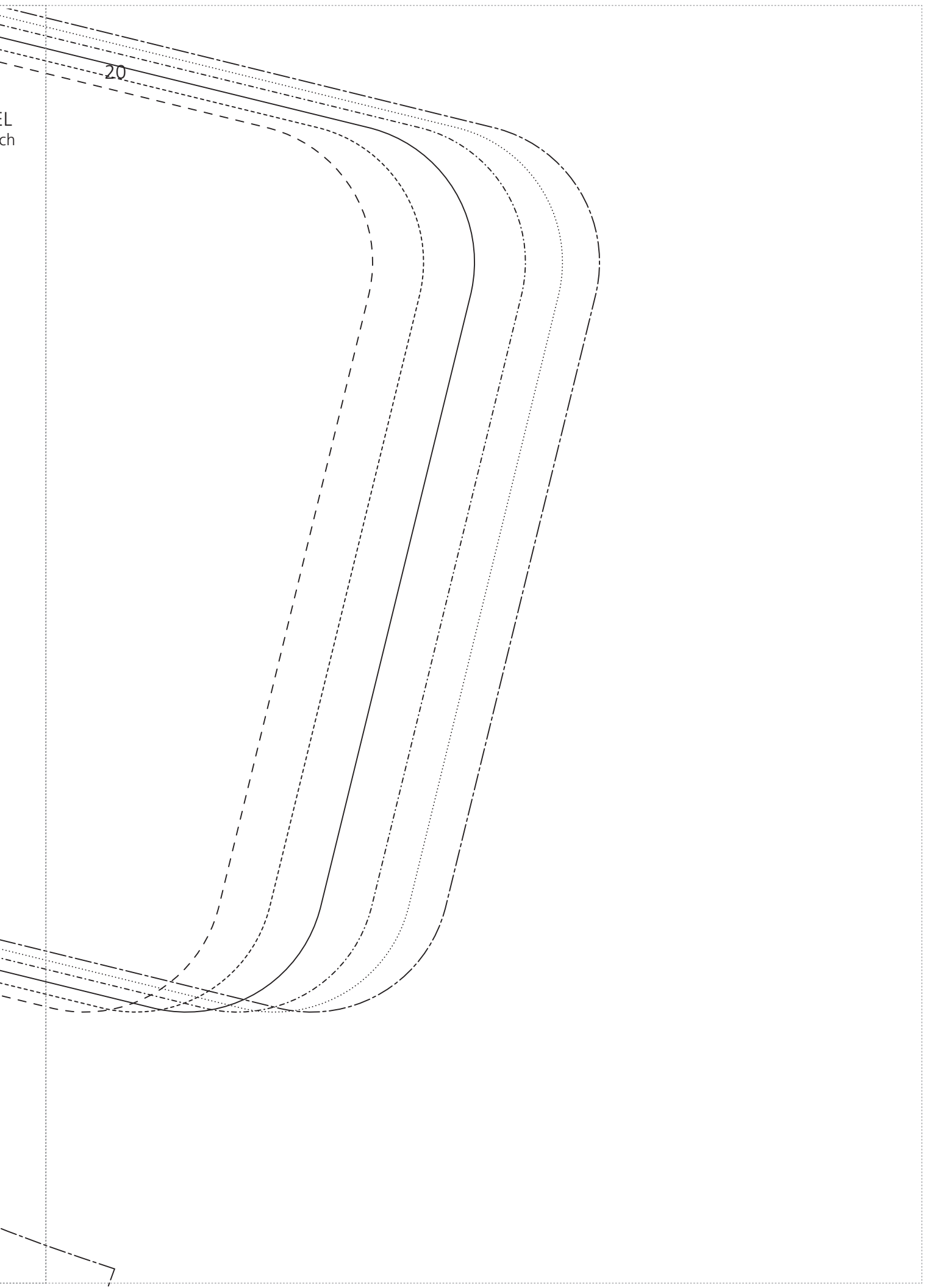
42

44

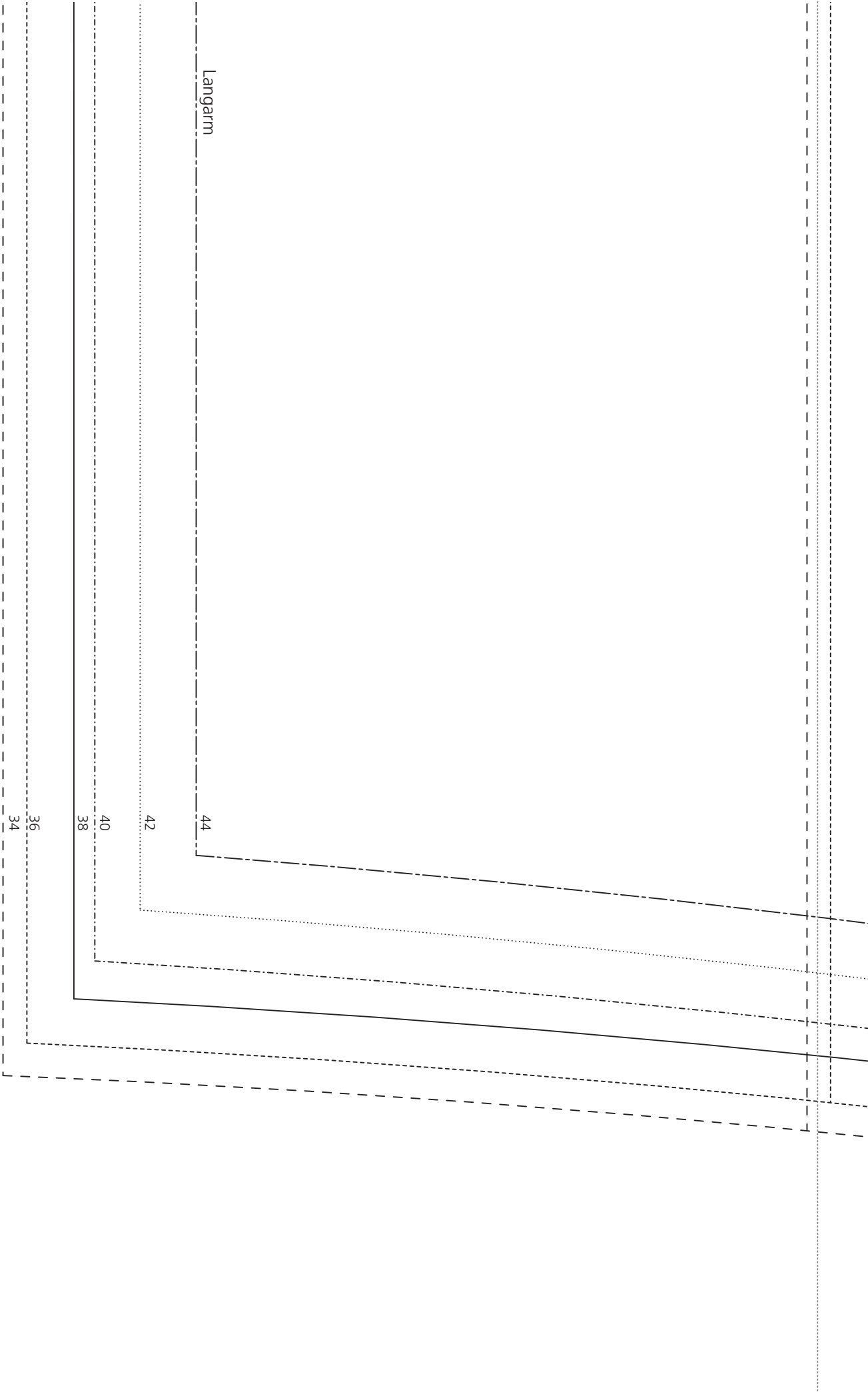


20

EL
ch

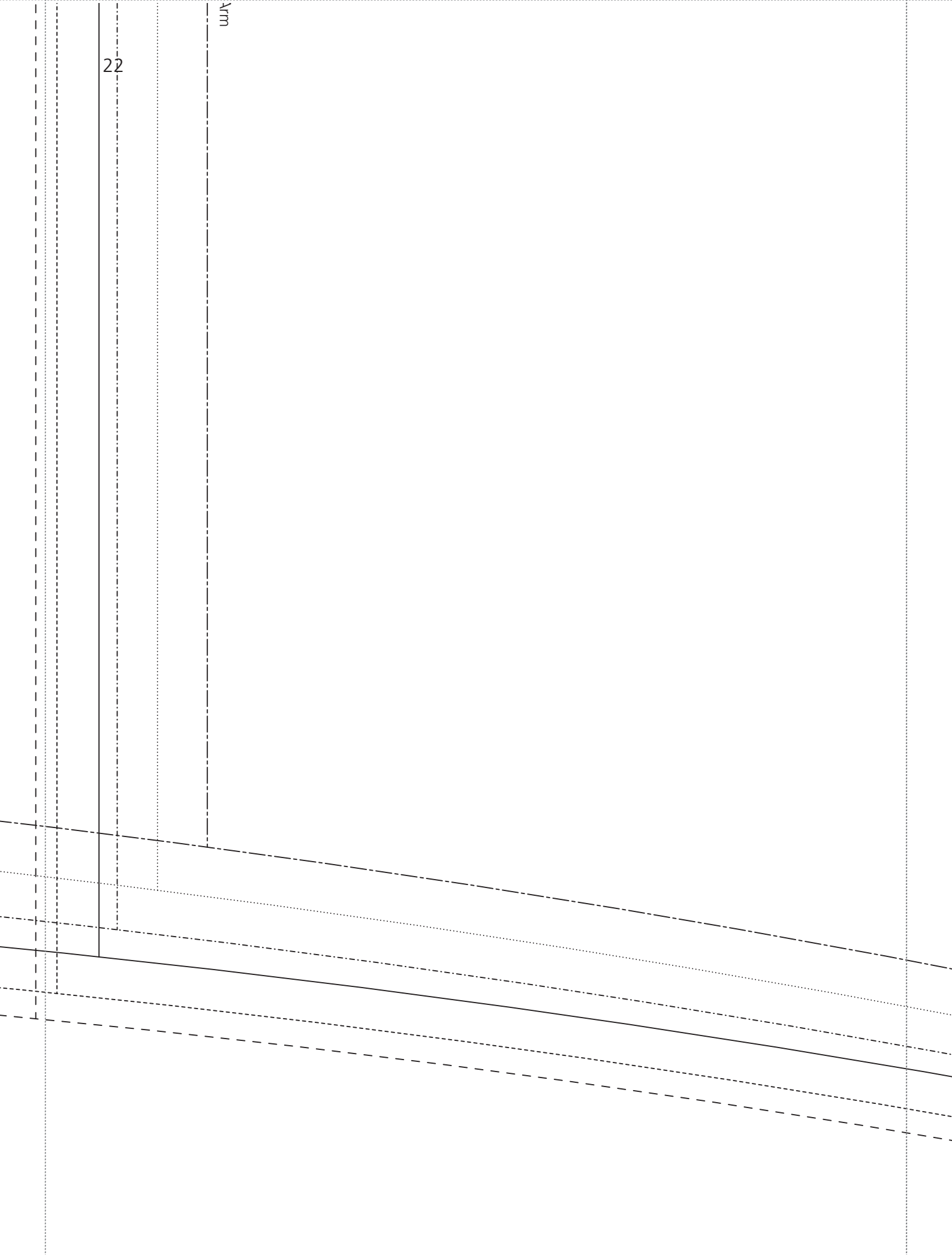


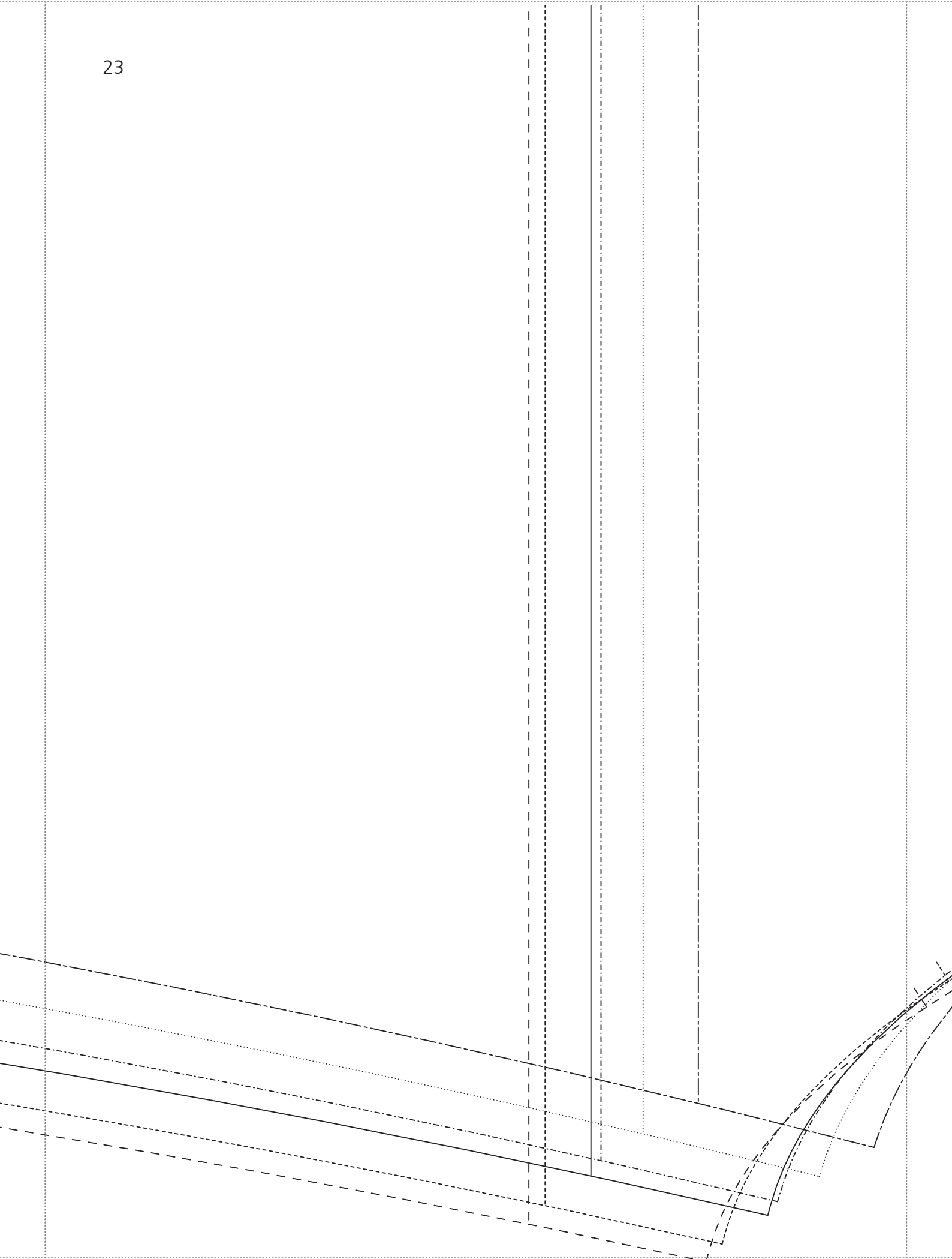
Langarm

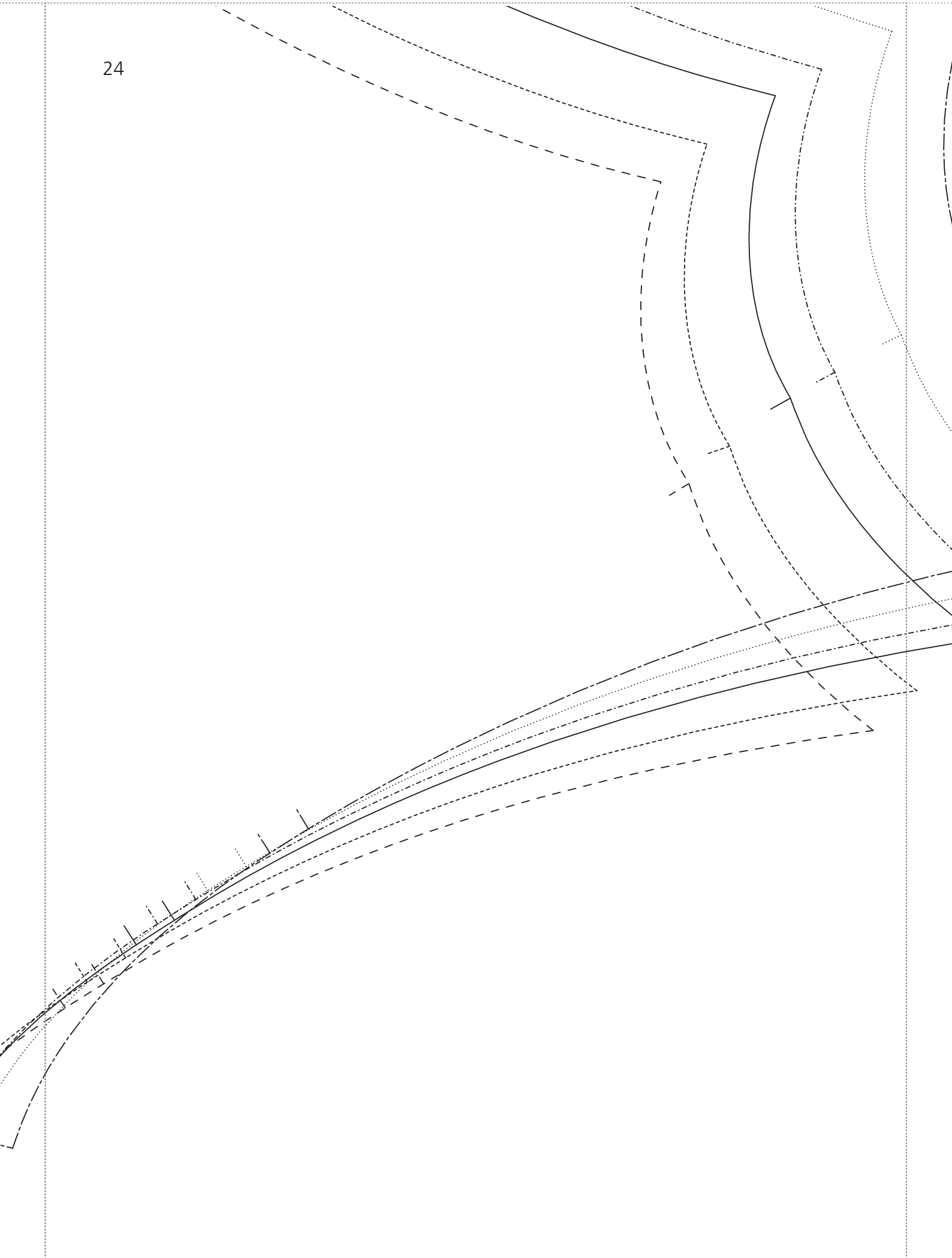


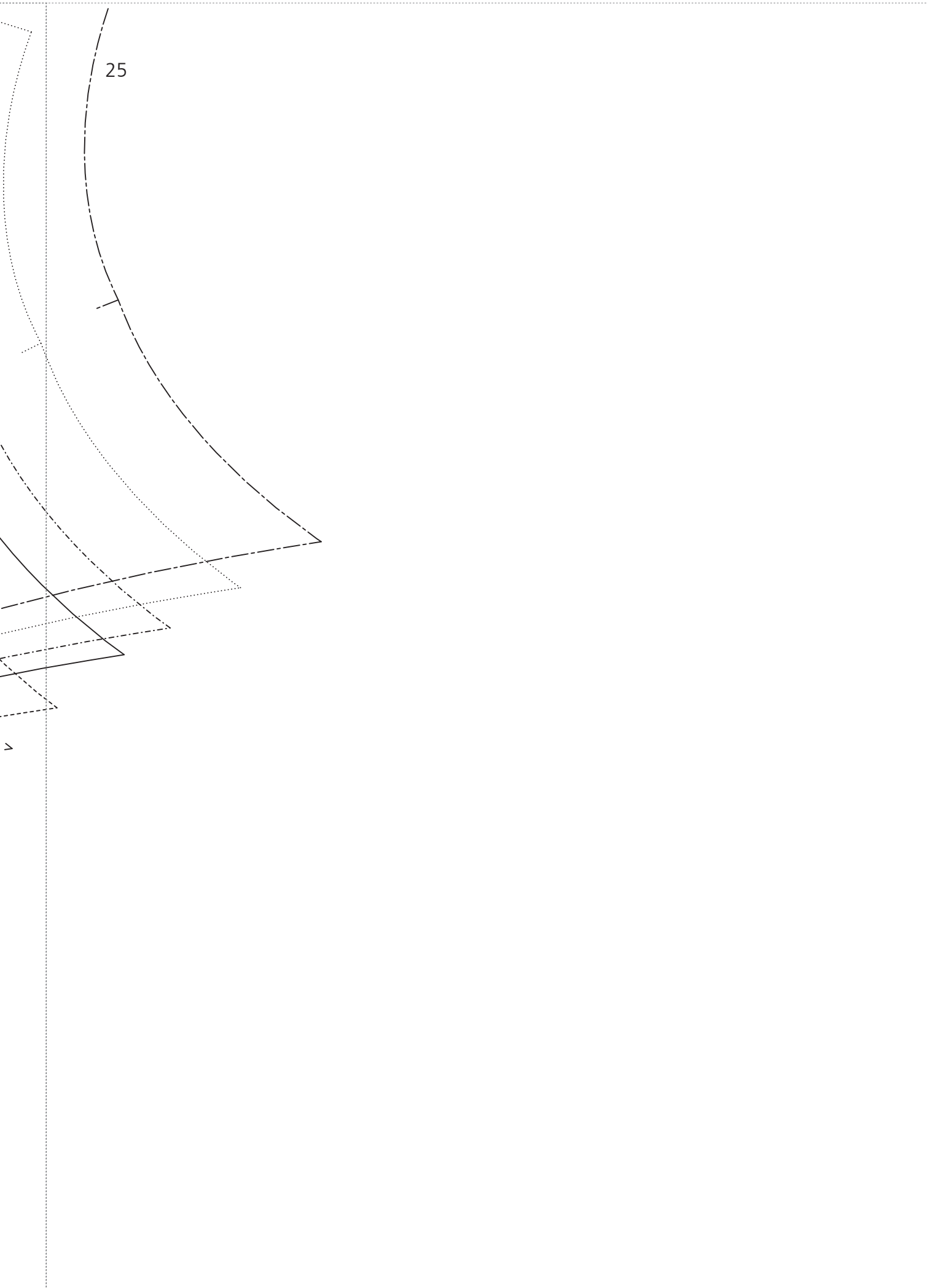
22

Am









25