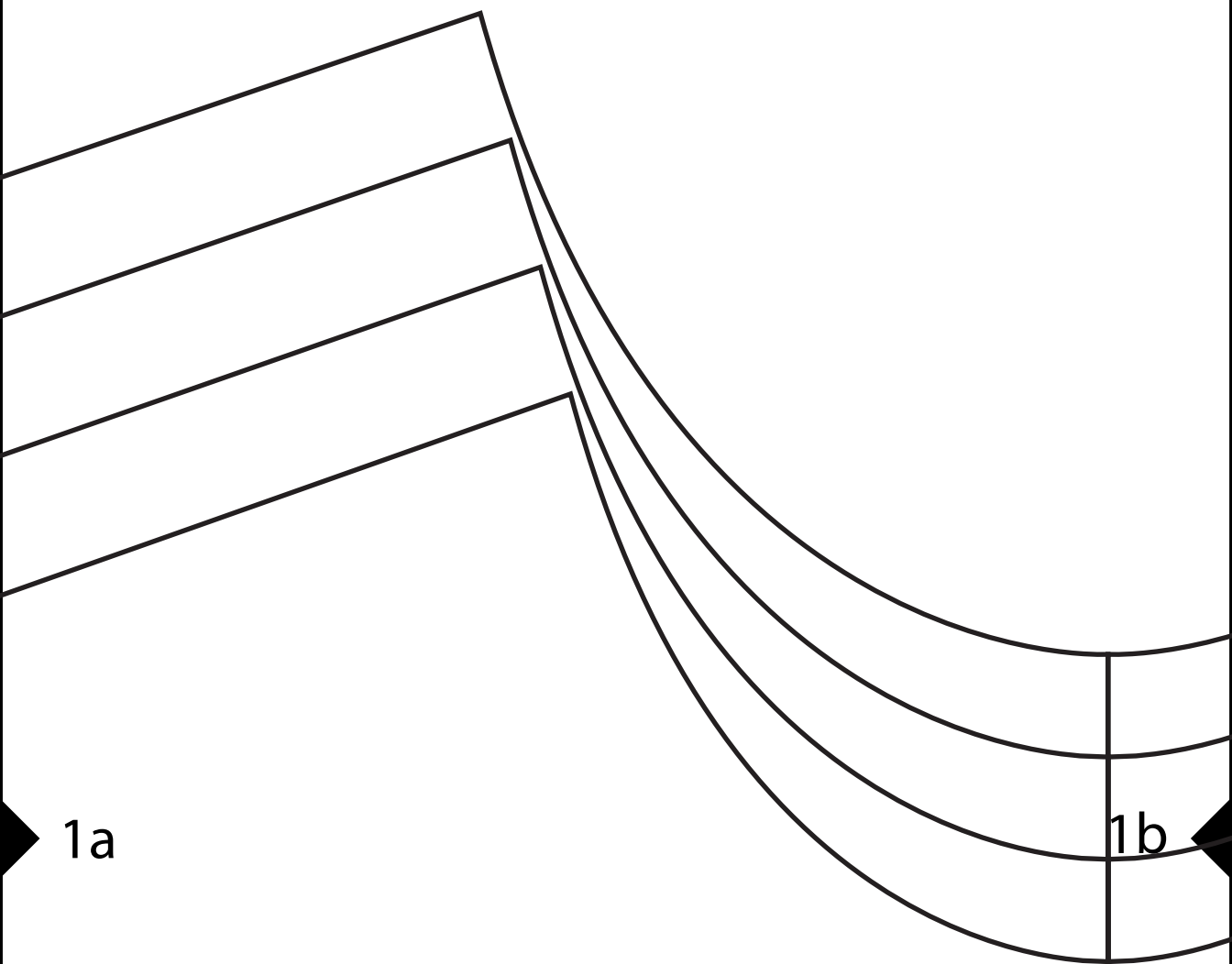


1a

Fu

2a

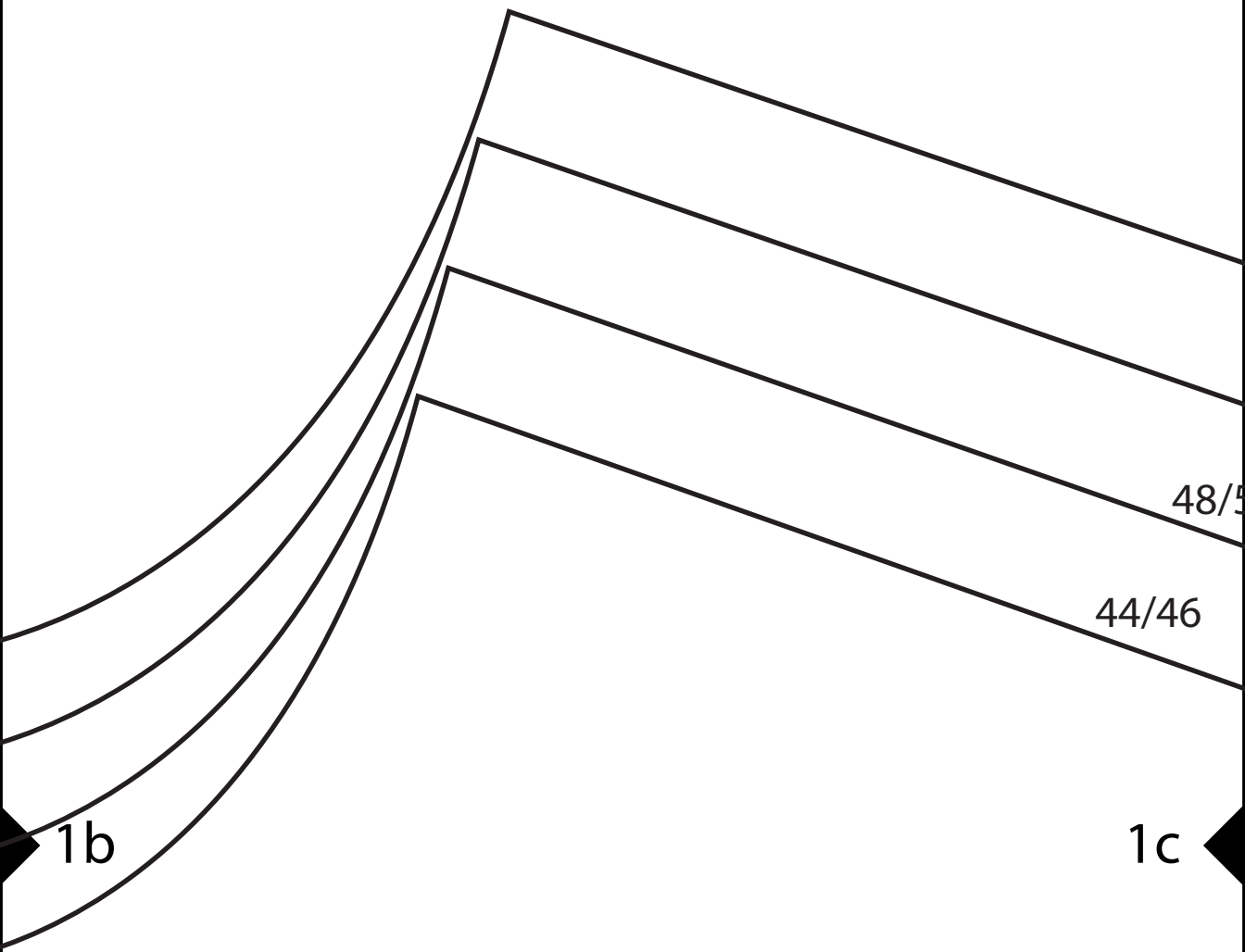


Front

Full Swimsuit Sloper

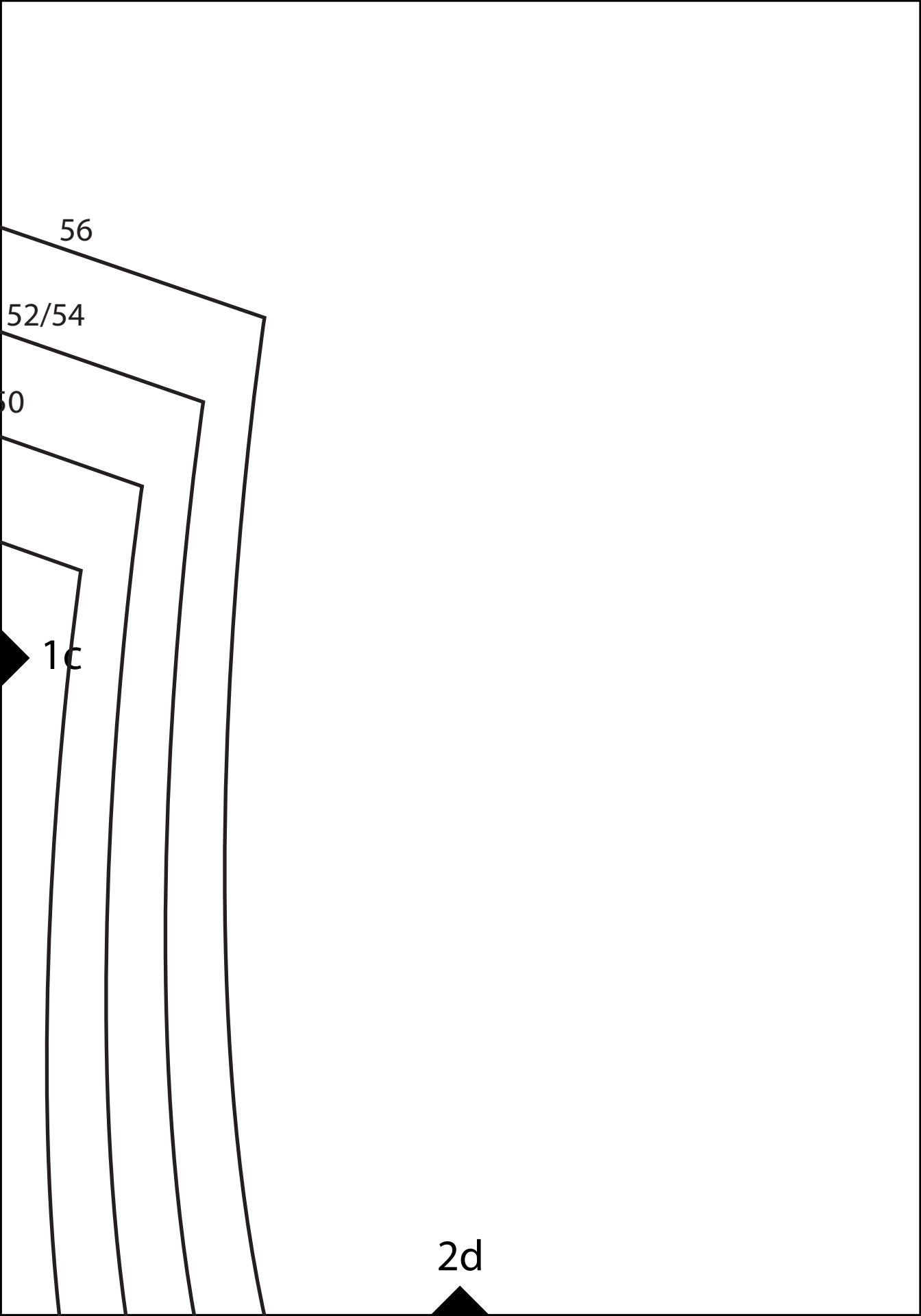
sizes 44/46 - 56

2b



*Seam allowance
NOT included

2c

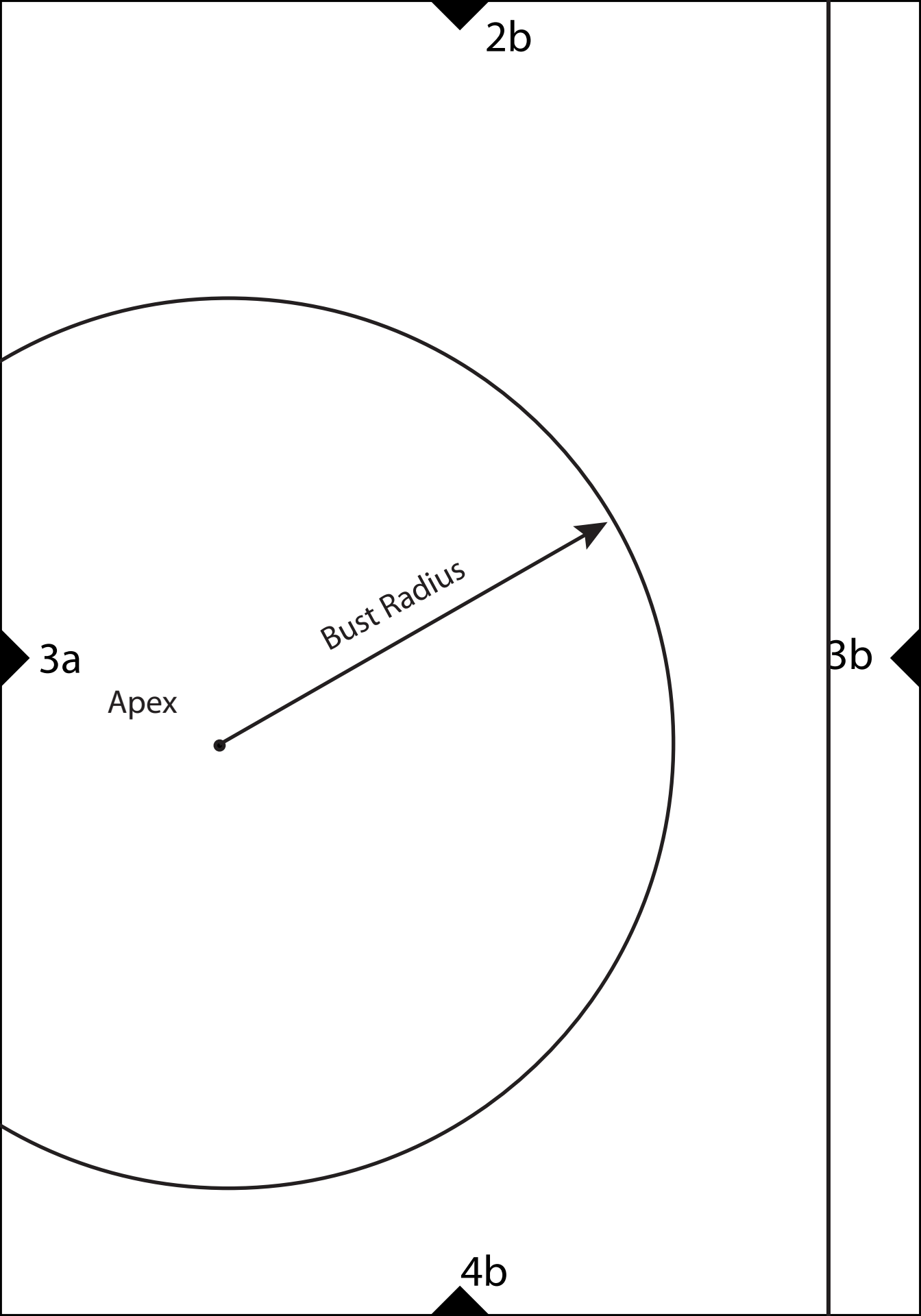


2a

The diagram consists of four nested, curved lines that are roughly parallel to each other. The lines are drawn with a thin black stroke. The innermost line is the most curved, while the outermost line is the least curved. The lines are arranged in a way that they appear to be part of a larger, curved structure. The labels '2a', '3a', and '4a' are placed near the lines, with '2a' at the top, '3a' on the right, and '4a' at the bottom. Each label is accompanied by a small black triangle pointing towards the line it identifies.

3a

4a



2c

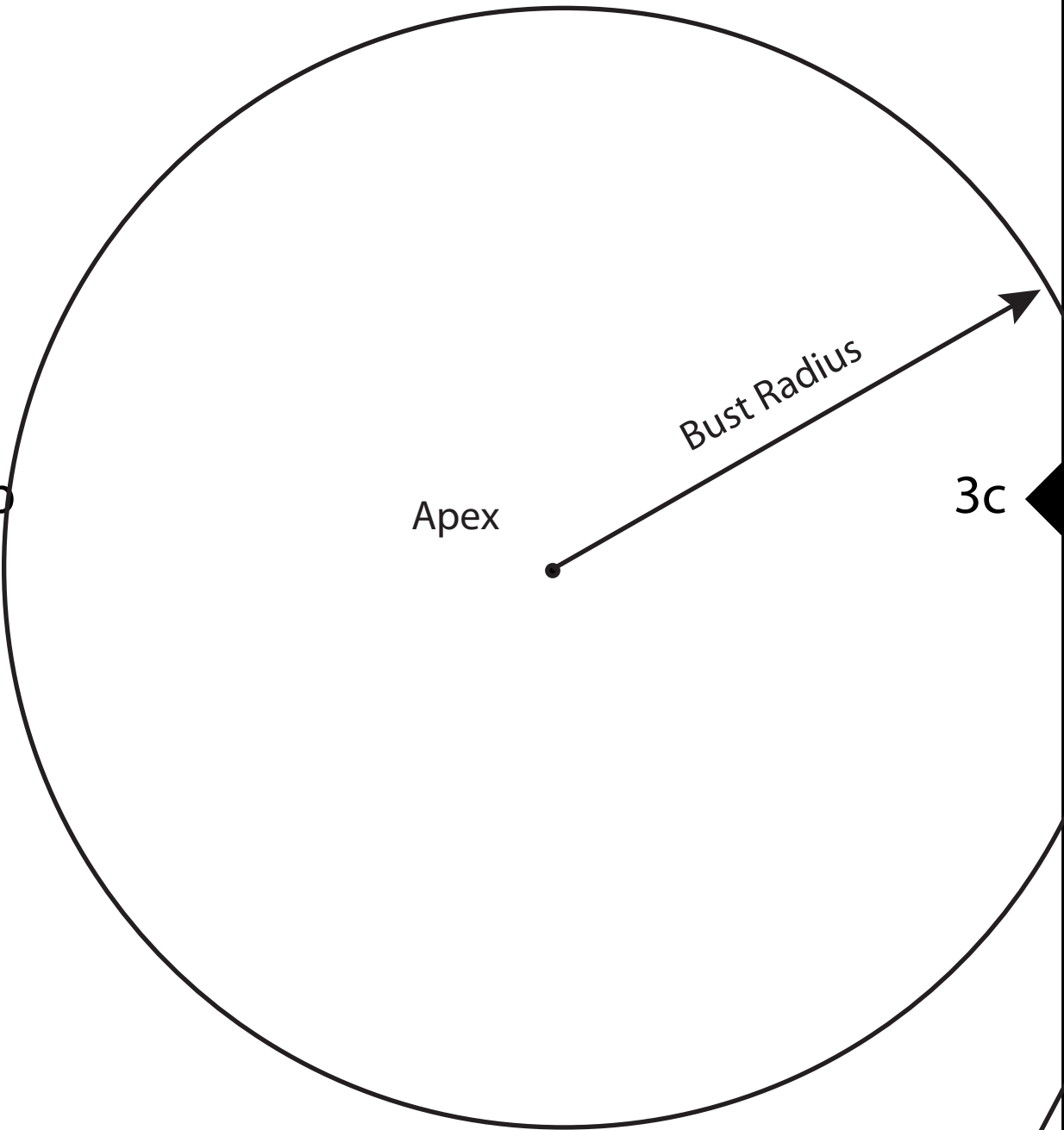
Apex

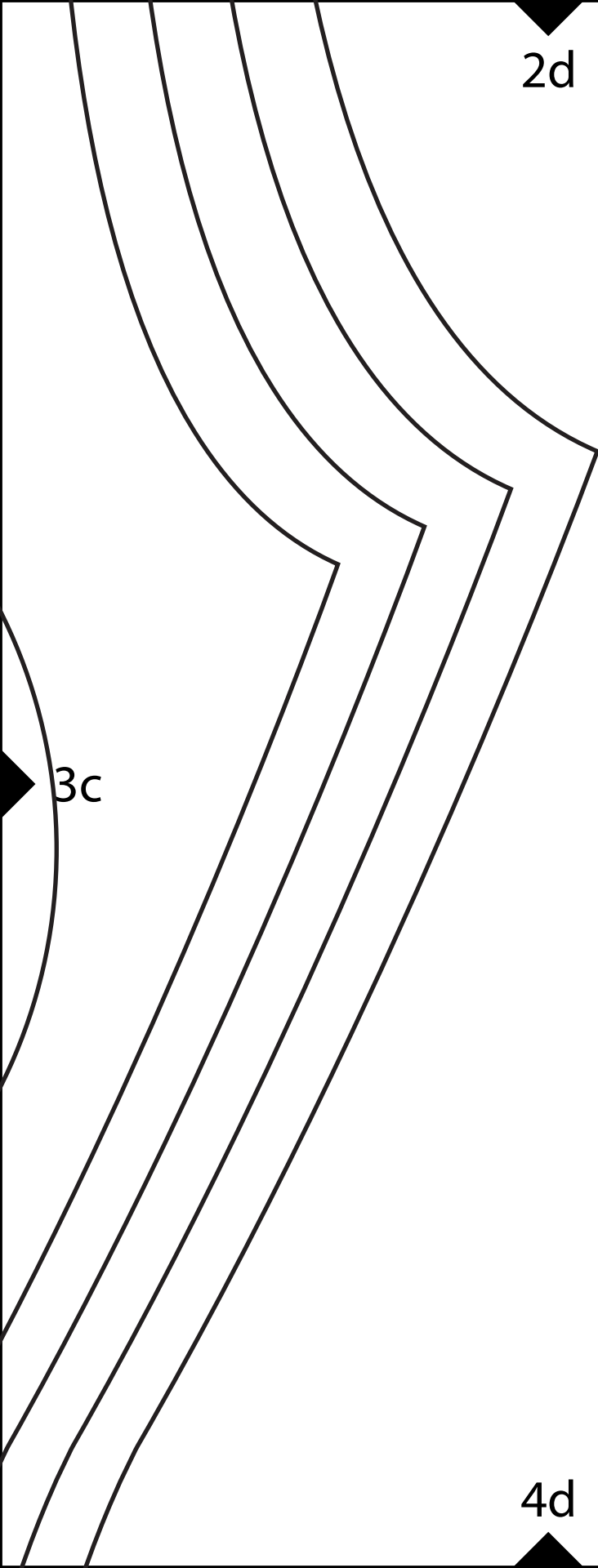
Bust Radius

3b

3c

4c

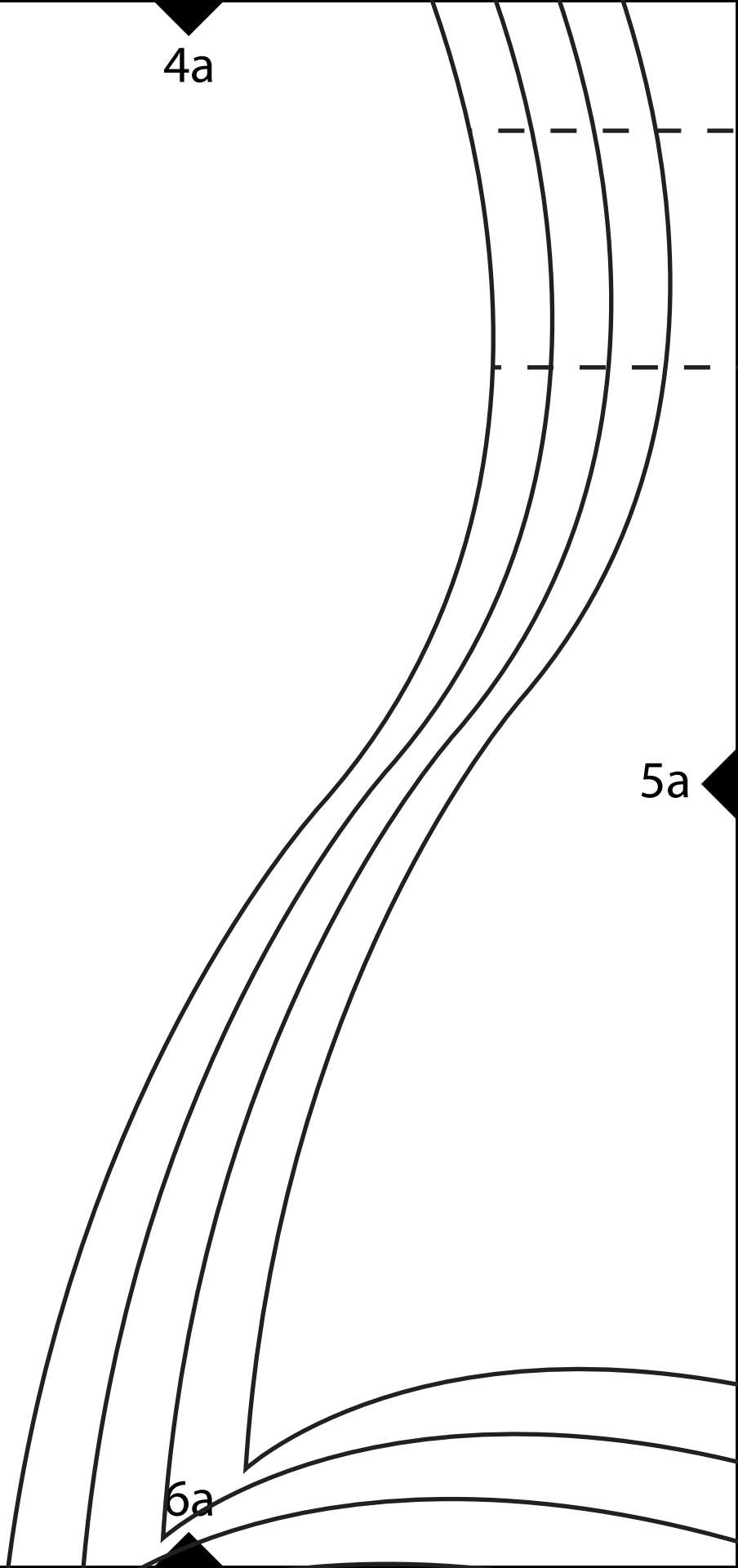




4a

5a

6a



4b

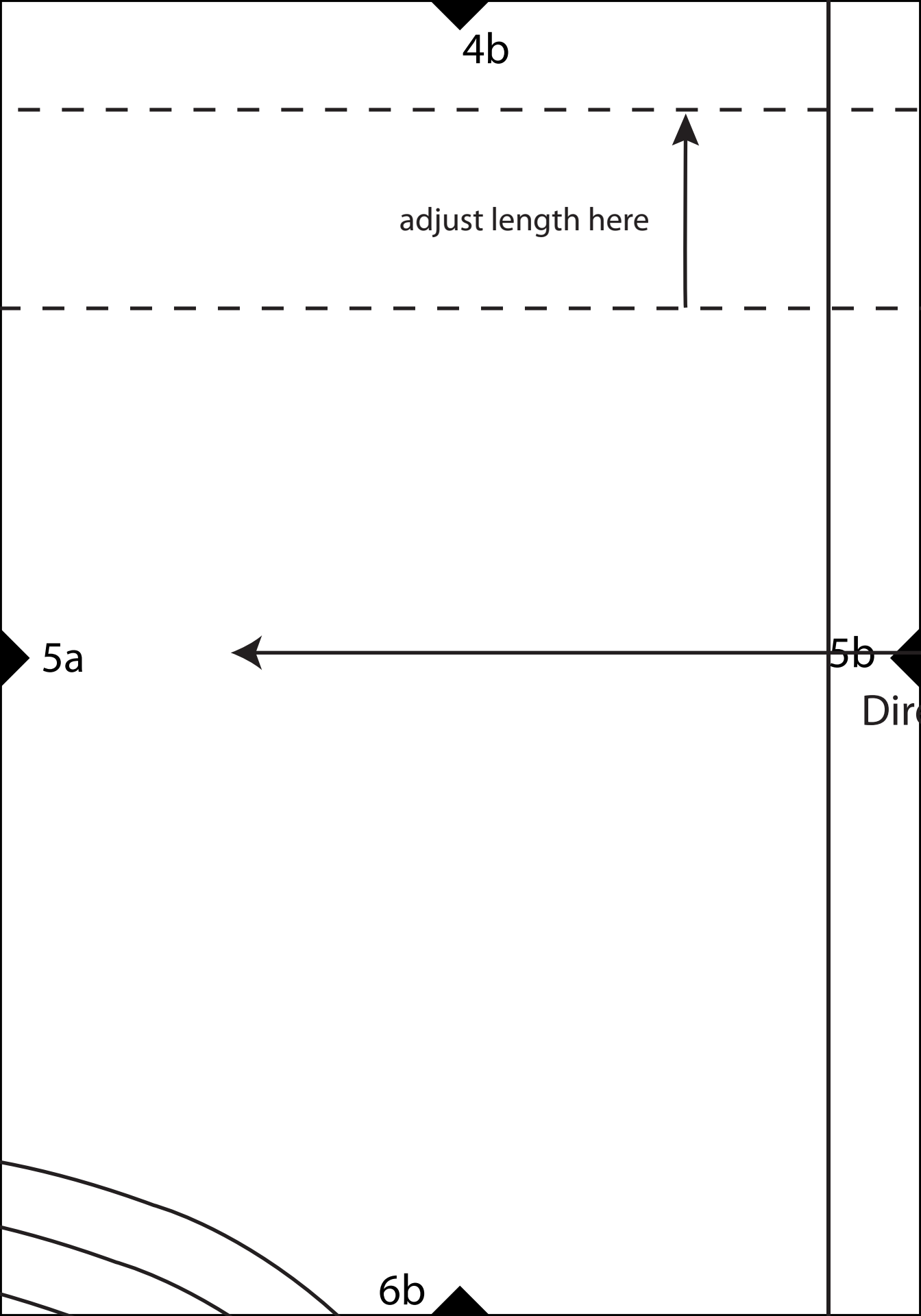
adjust length here

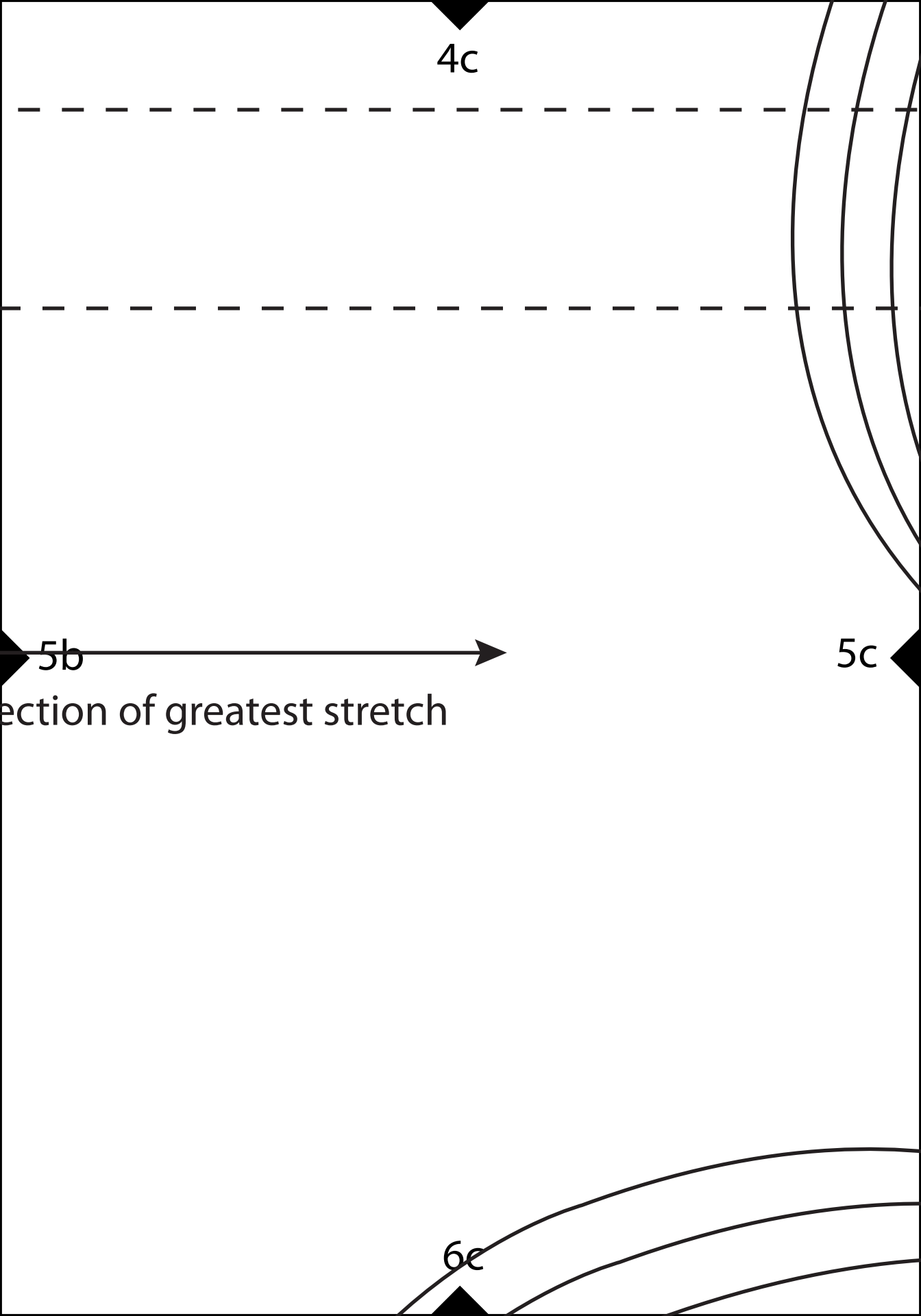
5a

5b

Dir

6b







4d

5c

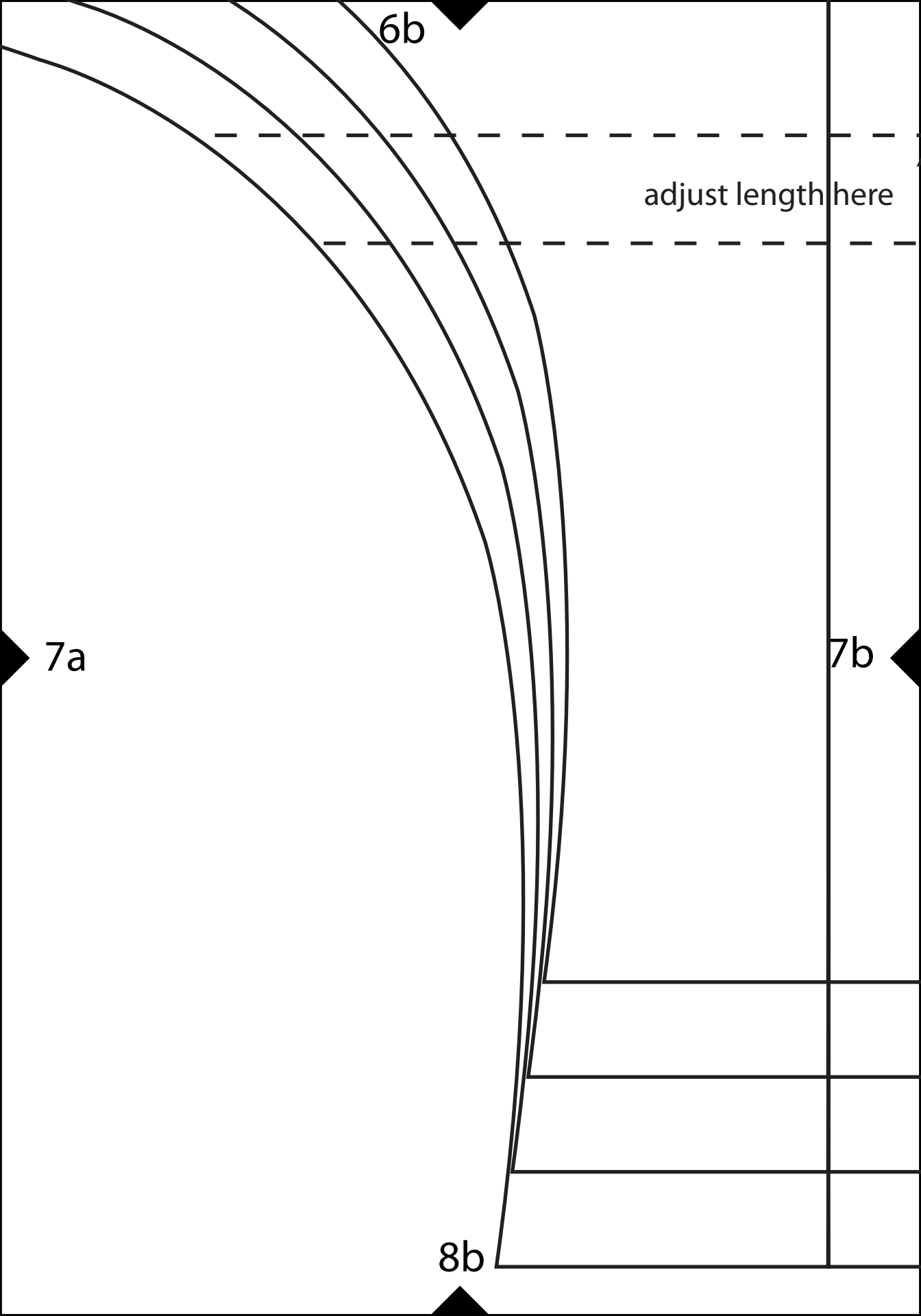
6d

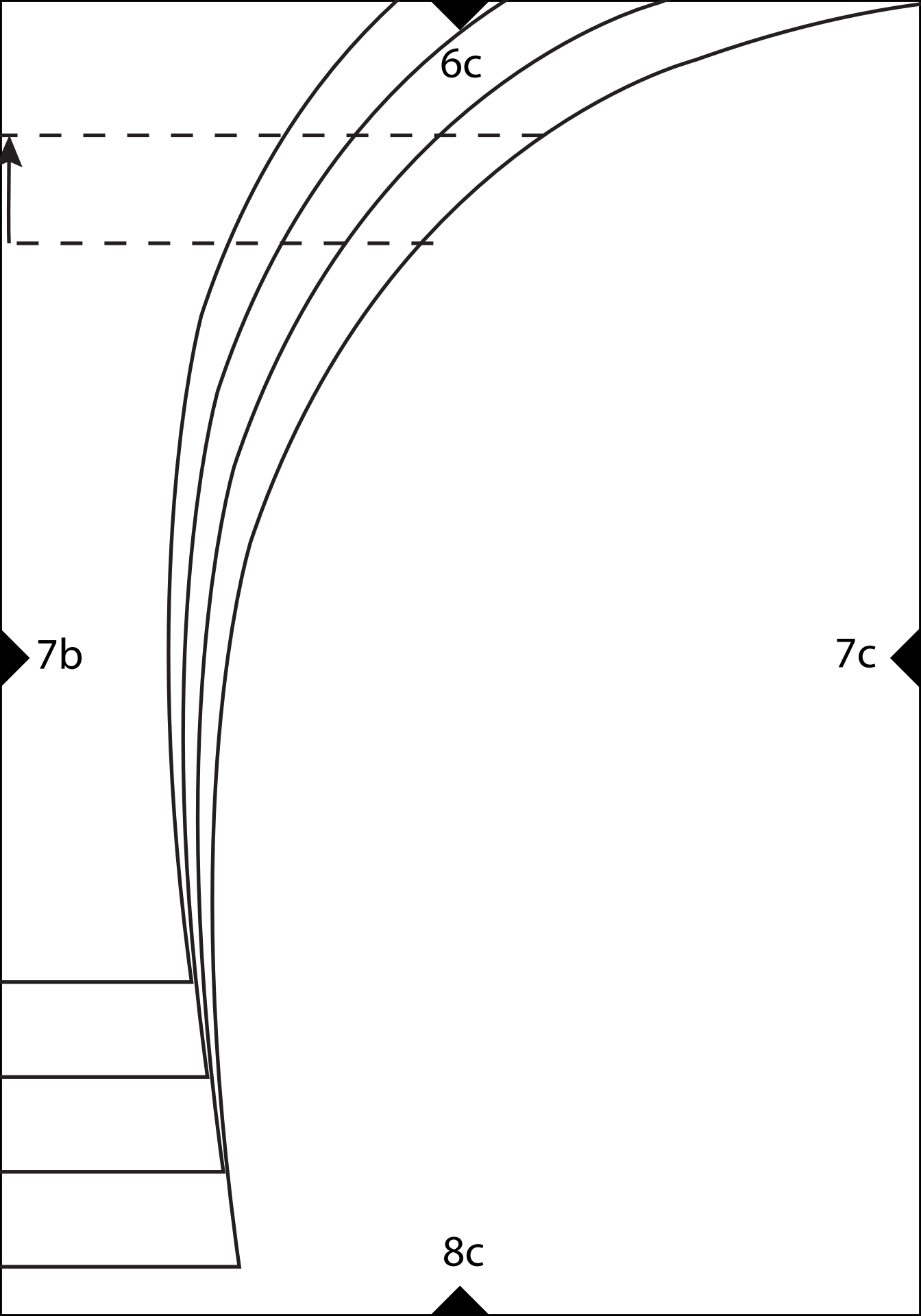


6a

7a

8a







6d



7c

test sqaure

4" X 4"

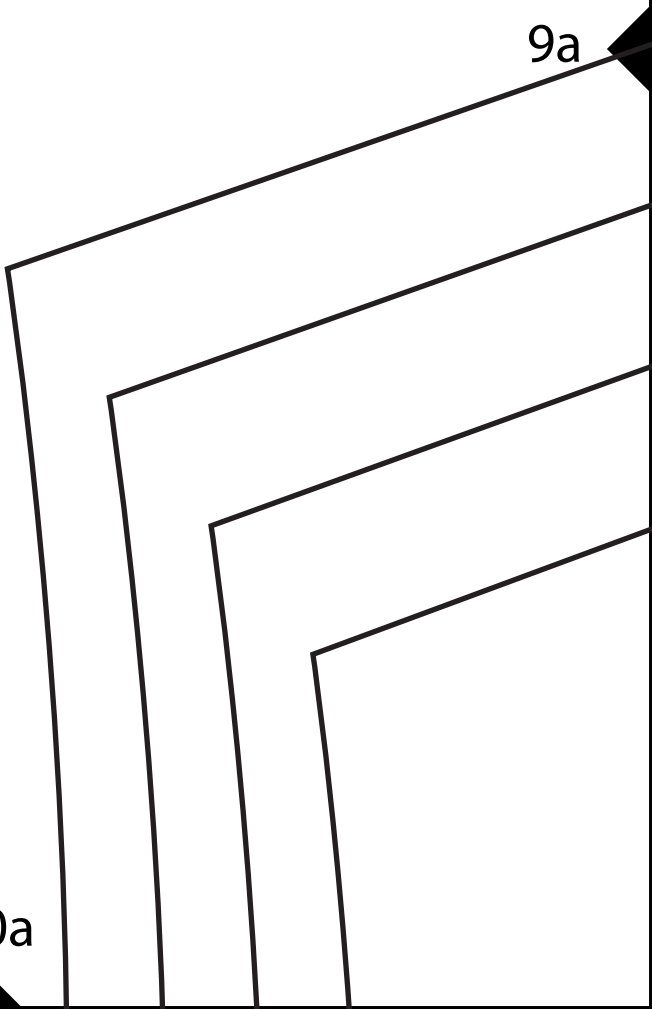


8d

8a

9a

10a

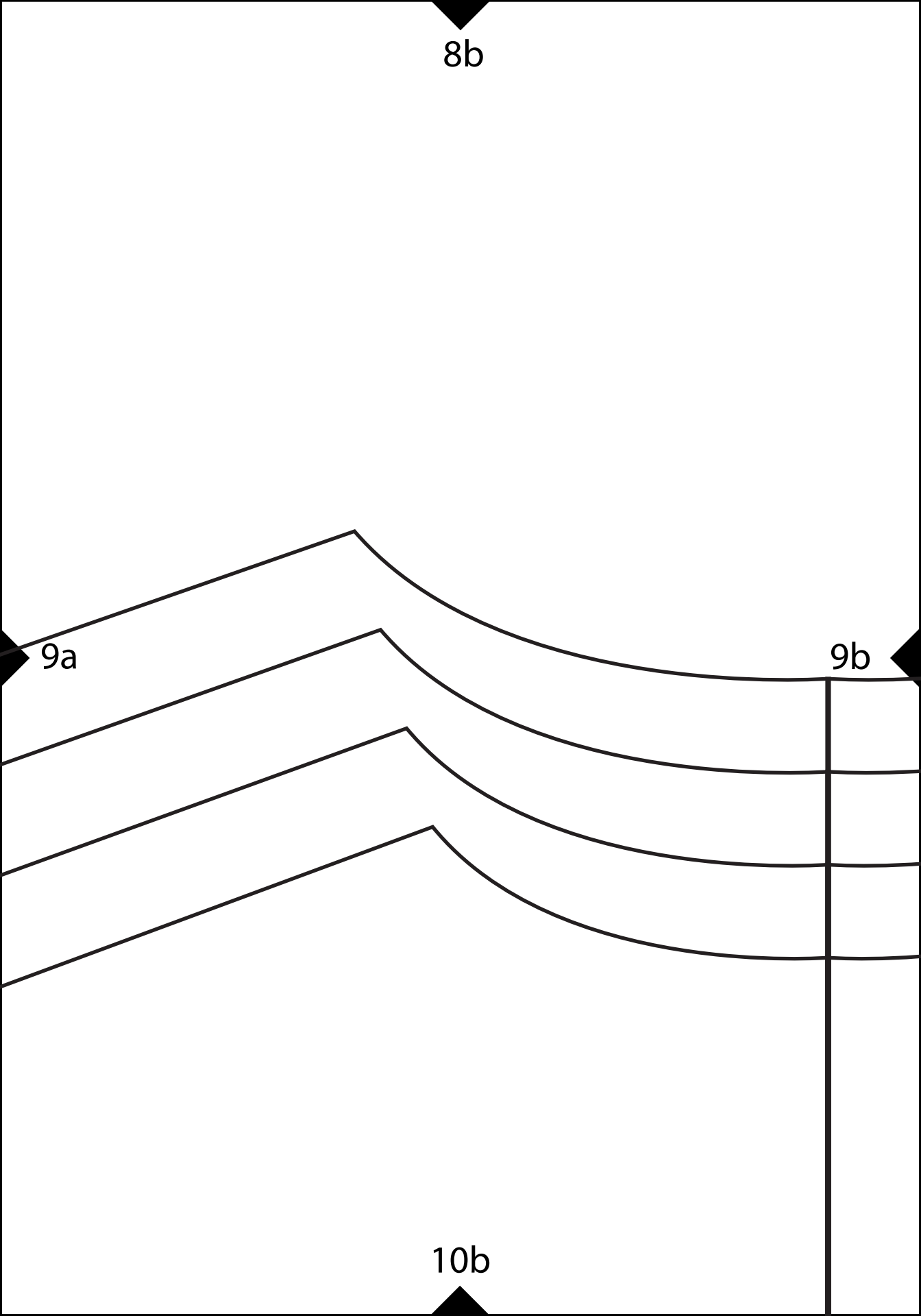


8b

9a

9b

10b



8c

9b

9c

5

48/50

44/46

10c

8d

9c

56

2/54

10d

10a

The diagram shows a series of four parallel, curved lines that converge towards the bottom. The lines are drawn with black outlines. The top of the lines is at the top edge of the frame, and they curve downwards and outwards. The bottom of the lines is at the bottom edge of the frame. The lines are labeled with '10a' at the top, '11a' on the right side, and '12a' at the bottom. There are also arrows pointing to the top and bottom of the lines.

11a

12a

F

10b

Back

Full Swimsuit Sloper

sizes 44/46 - 56

11a

11b

12b



10c

11b

11c

12c

10d

The diagram features a series of four curved lines on the left side, all curving towards the right. The lines are roughly parallel to each other. Three arrows point towards these lines: one at the top center pointing down, one on the left side pointing right, and one at the bottom center pointing up.

11c

12d

12a

The diagram features a series of four curved lines that originate from the top and bottom edges and curve towards the right. At the top, a black triangle points downwards to the label '12a'. At the bottom, a black triangle points upwards to the label '14a'. On the right side, a black triangle points leftwards to the label '13a'. Two horizontal dashed lines are drawn across the curves, one above and one below the '13a' label.

13a

14a

12b

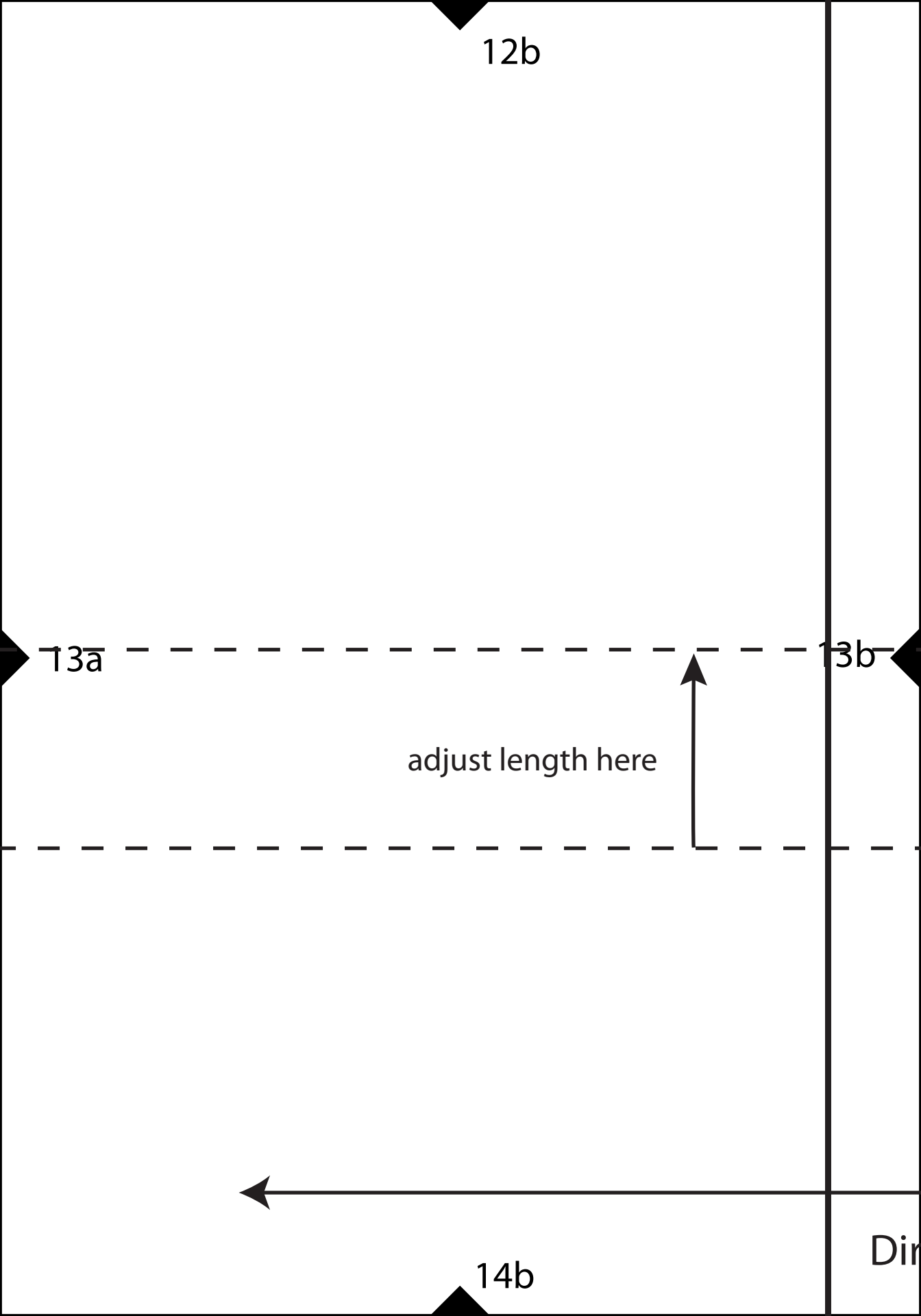
13a

13b

adjust length here

14b

Dir

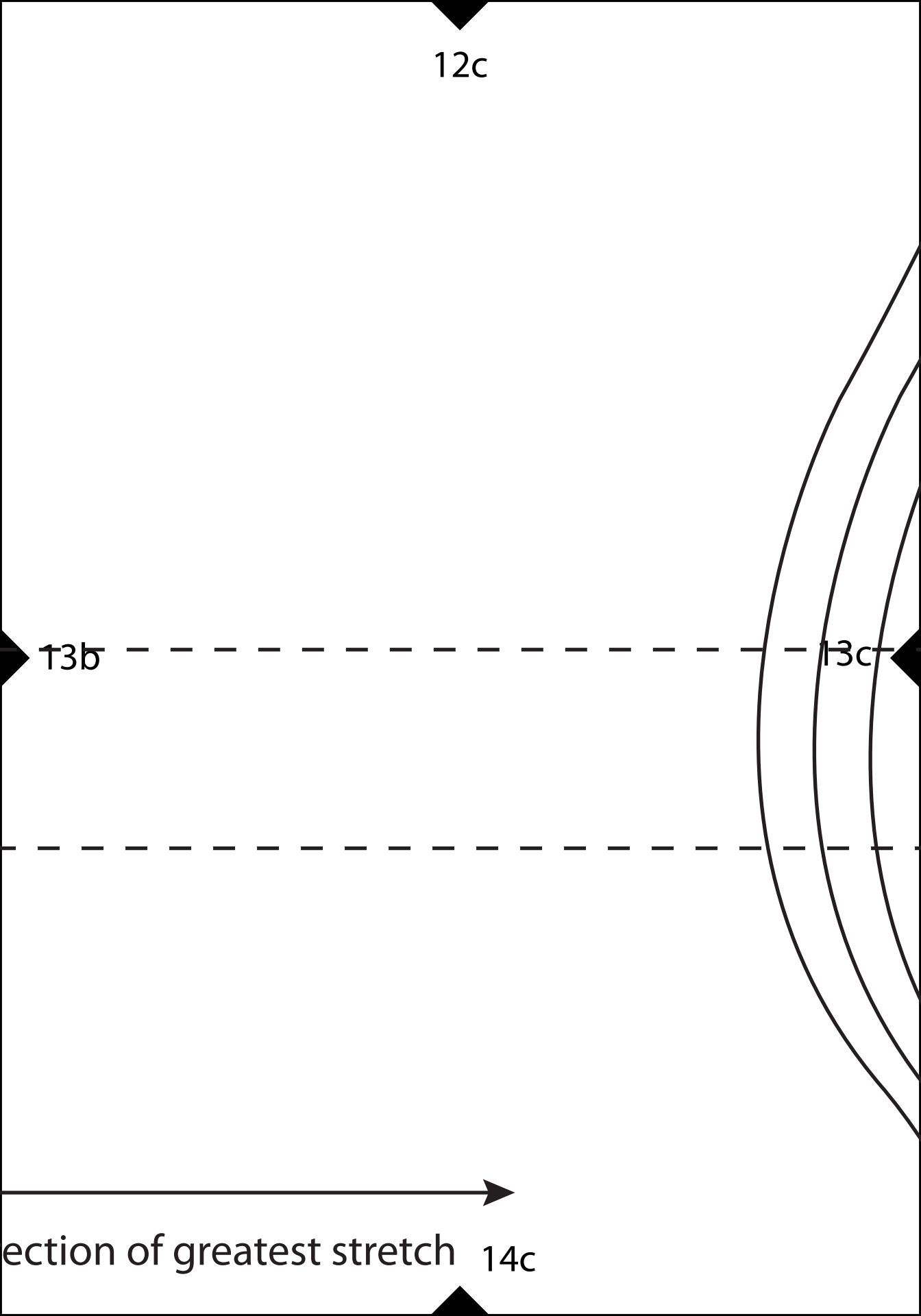


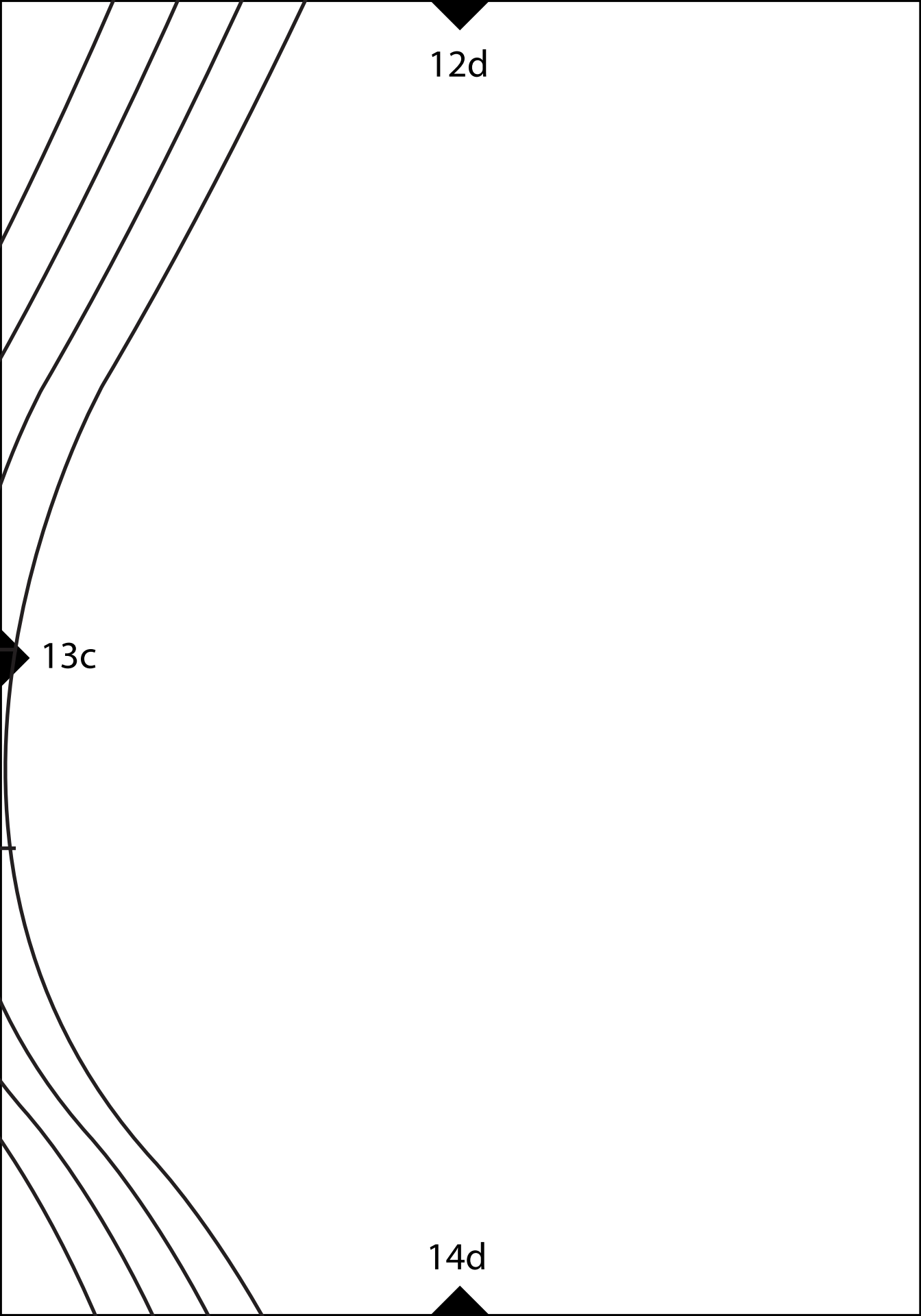
12c

13b

13c

direction of greatest stretch 14c





12d

13c

14d

14a

The diagram features several curved lines that sweep from the top-left towards the bottom-right. A horizontal dashed line is positioned in the lower-middle section, with a second dashed line below it. Three labels with arrows point to specific features: '14a' at the top, '15a' on the right, and '16a' at the bottom.

15a

16a

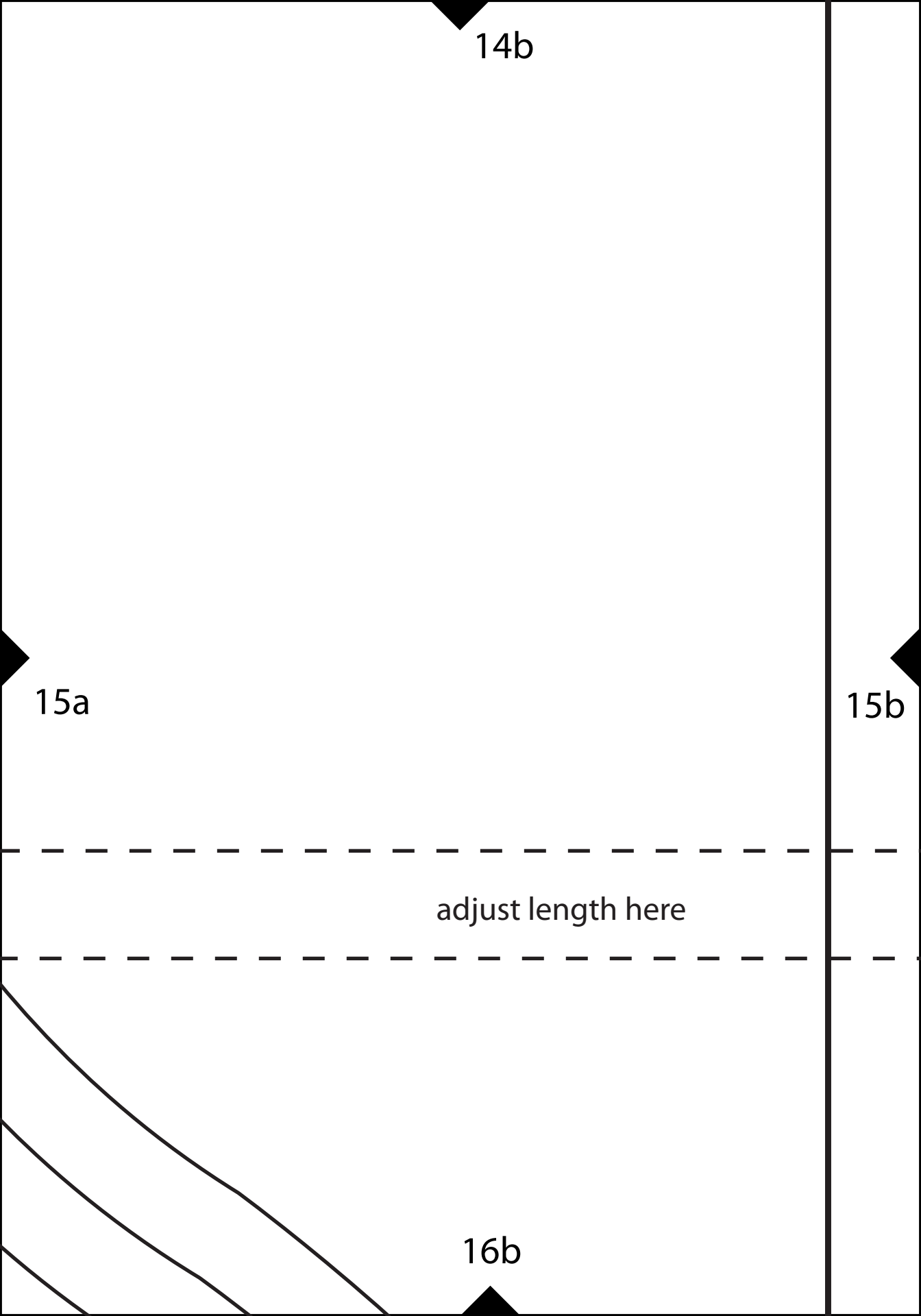
14b

15a

15b

adjust length here

16b

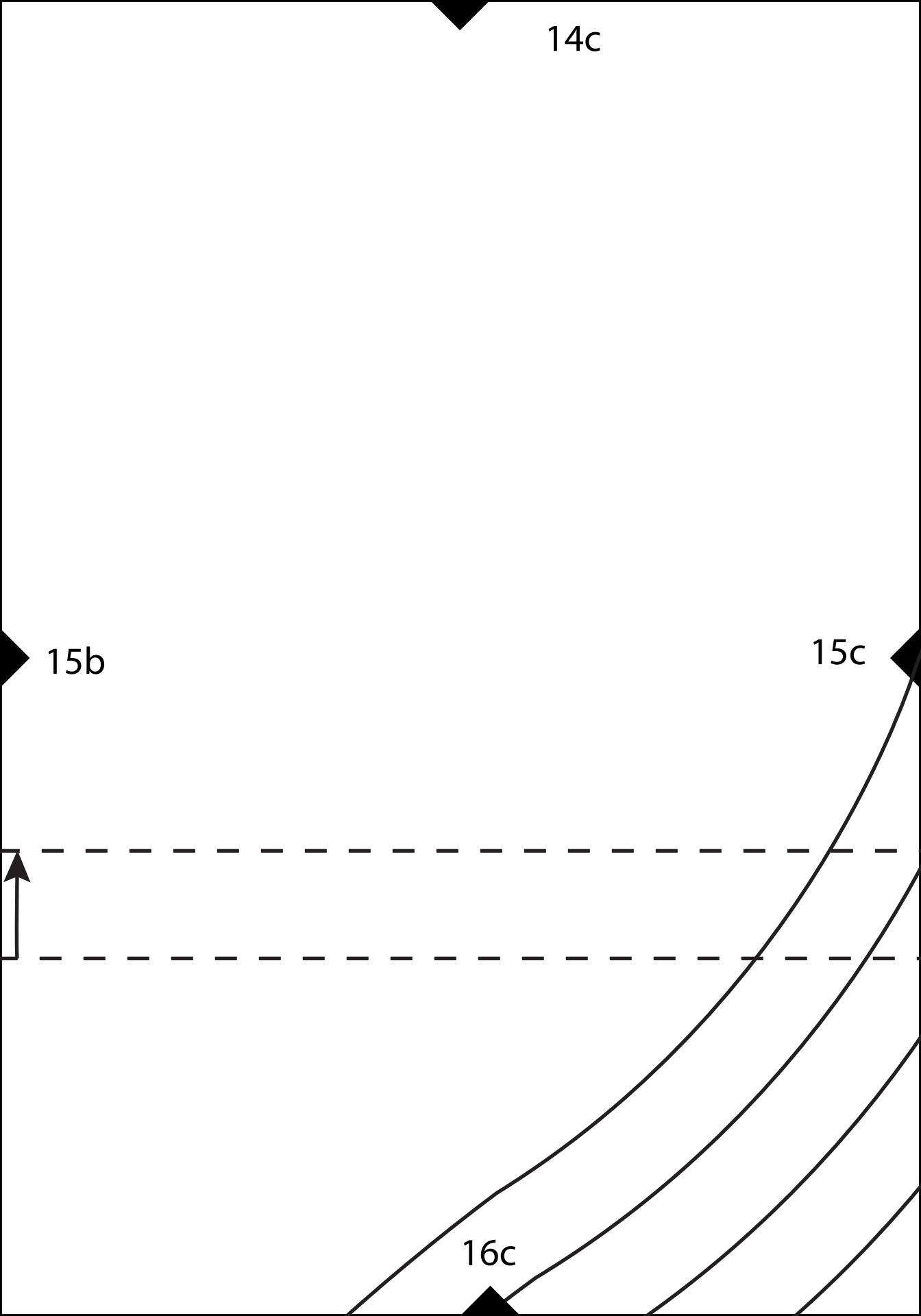


14c

15b

15c

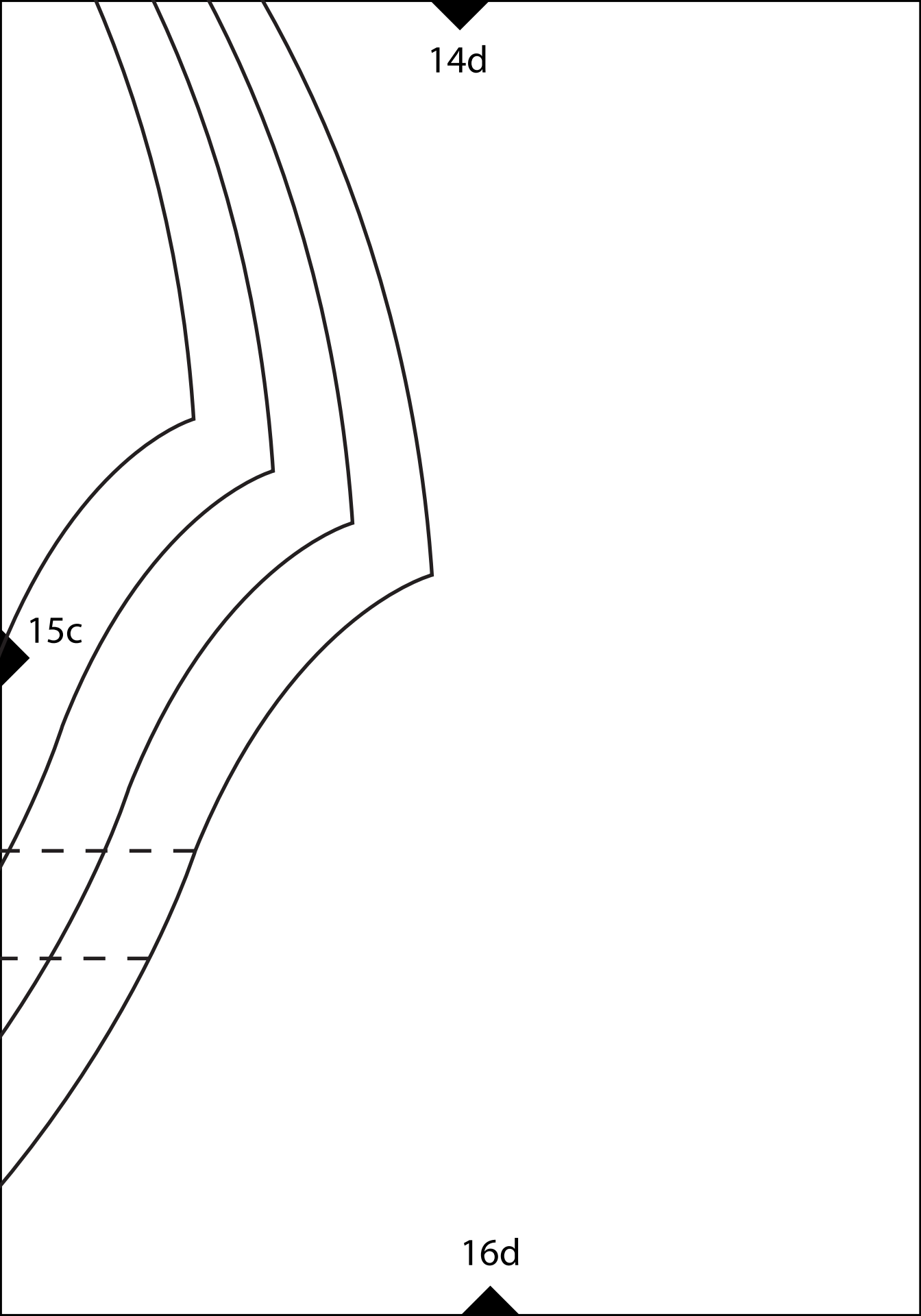
16c



14d

15c

16d



16a

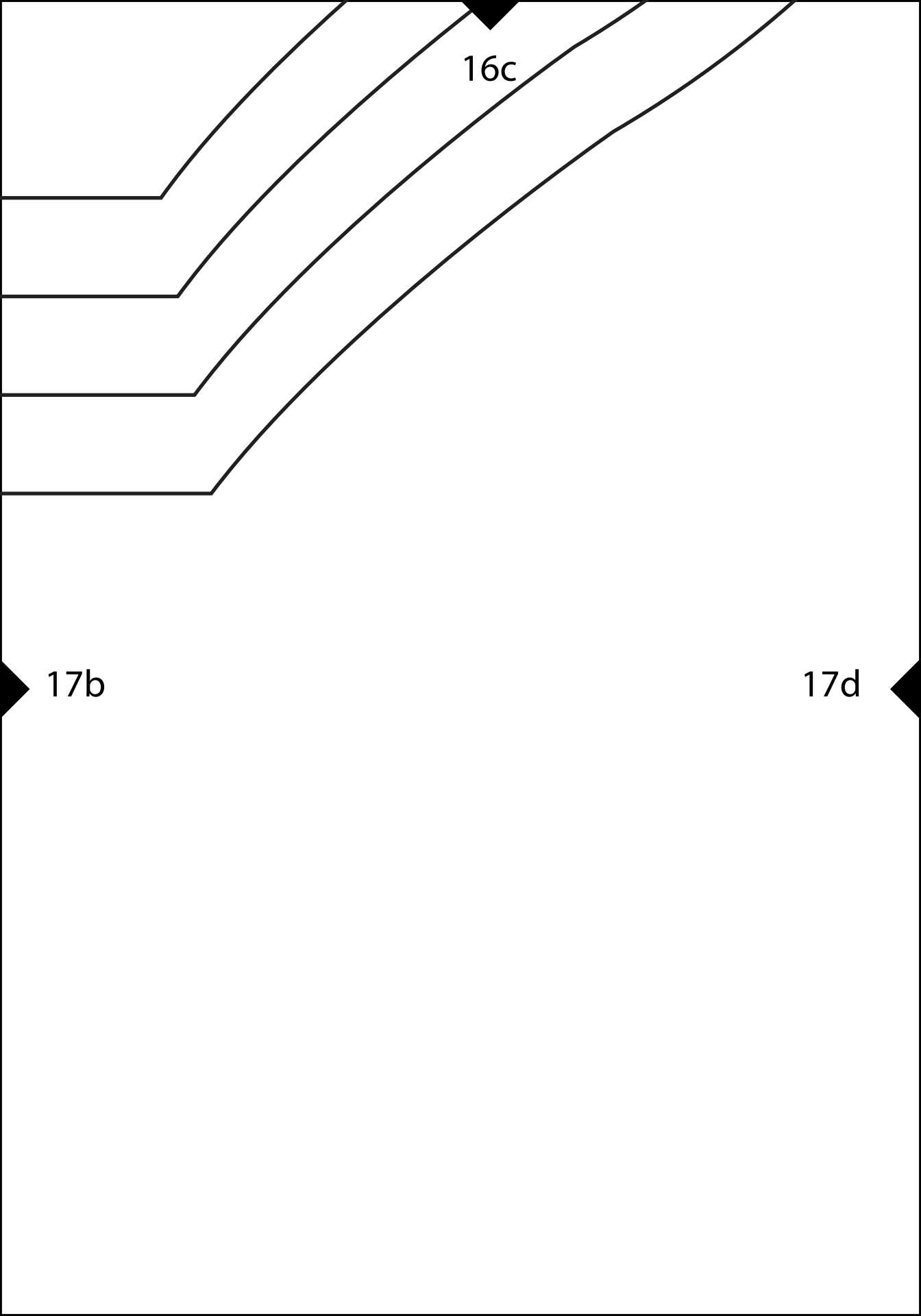
17a

The diagram consists of a grid of lines. A vertical line is on the right side. Three horizontal lines cross the grid. From the left, three curved lines slope downwards and to the right, each ending in a horizontal segment that aligns with one of the horizontal grid lines. The label '16b' is positioned above the top horizontal line. The label '17a' is on the left side, with a black arrow pointing to the left edge of the grid. The label '17b' is on the right side, with a black arrow pointing to the right edge of the grid.

16b

17a

17b




16c

17b

17d



16d



17d