



5 x 5 cm

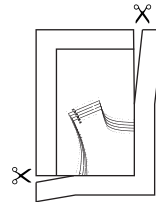
Kontrollkästchen - bitte nachmessen und prüfen, ob Breite/Höhe exakt 5 cm betragen

Schnittmuster drucken

1. Öffnen Sie die PDF-Datei (z.B. im Adobe Reader)
2. **Wichtig:** Stellen Sie in den Druckeigenschaften „tatsächliche Größe“ ein, sodass der Ausdruck nicht skaliert wird. Drucken Sie diese erste Seite aus und überprüfen Sie die Maße des Kontrollkästchens.
3. Sind alle Einstellungen in Ordnung, drucken Sie die restlichen Seiten aus. Sie können farbig oder schwarz-weiß drucken.

Schnittmuster zusammenkleben

1. Schneiden Sie jeweils den rechten und unteren Rand ab.



2. Kleben Sie die Seiten aneinander (mit einem Klebestift oder transparentem Klebeband). Die Linien, sowie die identischen Zahlen und Buchstaben treffen dabei aufeinander. Starten Sie mit den Reihen und kleben Sie dann die einzelnen Reihen an der oberen, bzw. unteren Kante, aneinander.
3. Schneiden Sie die einzelnen Schnittteile in Ihrer Konfektionsgröße aus.

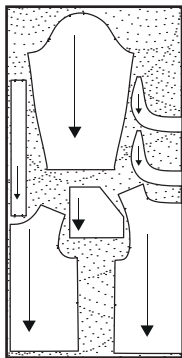
Maßtabelle (in cm)

	34	36	38	40	42	44
Brustumfang	84	88	92	96	102	108
Tailenumfang	67	71	75	79	85	91
Hüfte	92	96	100	104	110	116

Zuschneideplan, Größe 34 - 38

Achtung >>

Verbrauch nur 140 cm!
 (bei 140cm Stoffbreite)

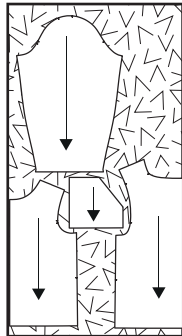


OBERSTOFF

Bruch

Achtung >>

Verbrauch nur 130 cm!
 (bei 140cm Stoffbreite)

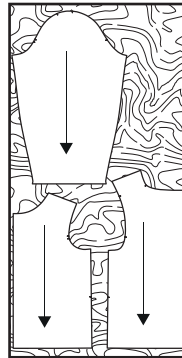


FUTTER

Bruch

Achtung >>

Verbrauch nur 140 cm!
 (bei 140cm Stoffbreite)

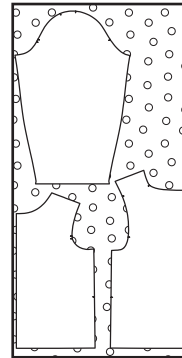


QUILTSTOFF

Bruch

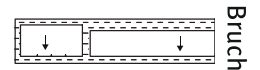
Achtung >>

Verbrauch nur 140 cm!
 (bei 150cm Stoffbreite)



VOLUMENVLIES

Bruch



BÜNDCHENSTOFF

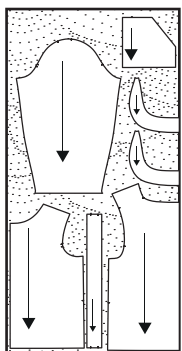


BÜGELVLIES

Zuschneideplan, Größe 40 - 44

Achtung >>

Verbrauch nur 140 cm!
 (bei 140cm Stoffbreite)

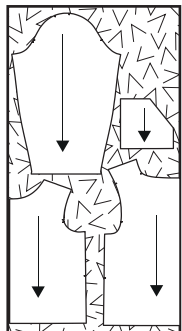


OBERSTOFF

Bruch

Achtung >>

Verbrauch nur 130 cm!
 (bei 140cm Stoffbreite)

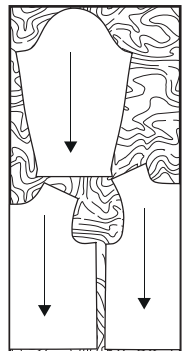


FUTTER

Bruch

Achtung >>

Verbrauch nur 140 cm!
 (bei 140cm Stoffbreite)

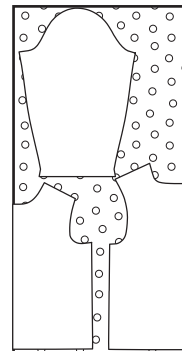


QUILTSTOFF

Bruch

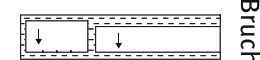
Achtung >>

Verbrauch nur 140 cm!
 (bei 150cm Stoffbreite)

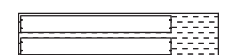


VOLUMENVLIES

Bruch



BÜNDCHENSTOFF



BÜGELVLIES

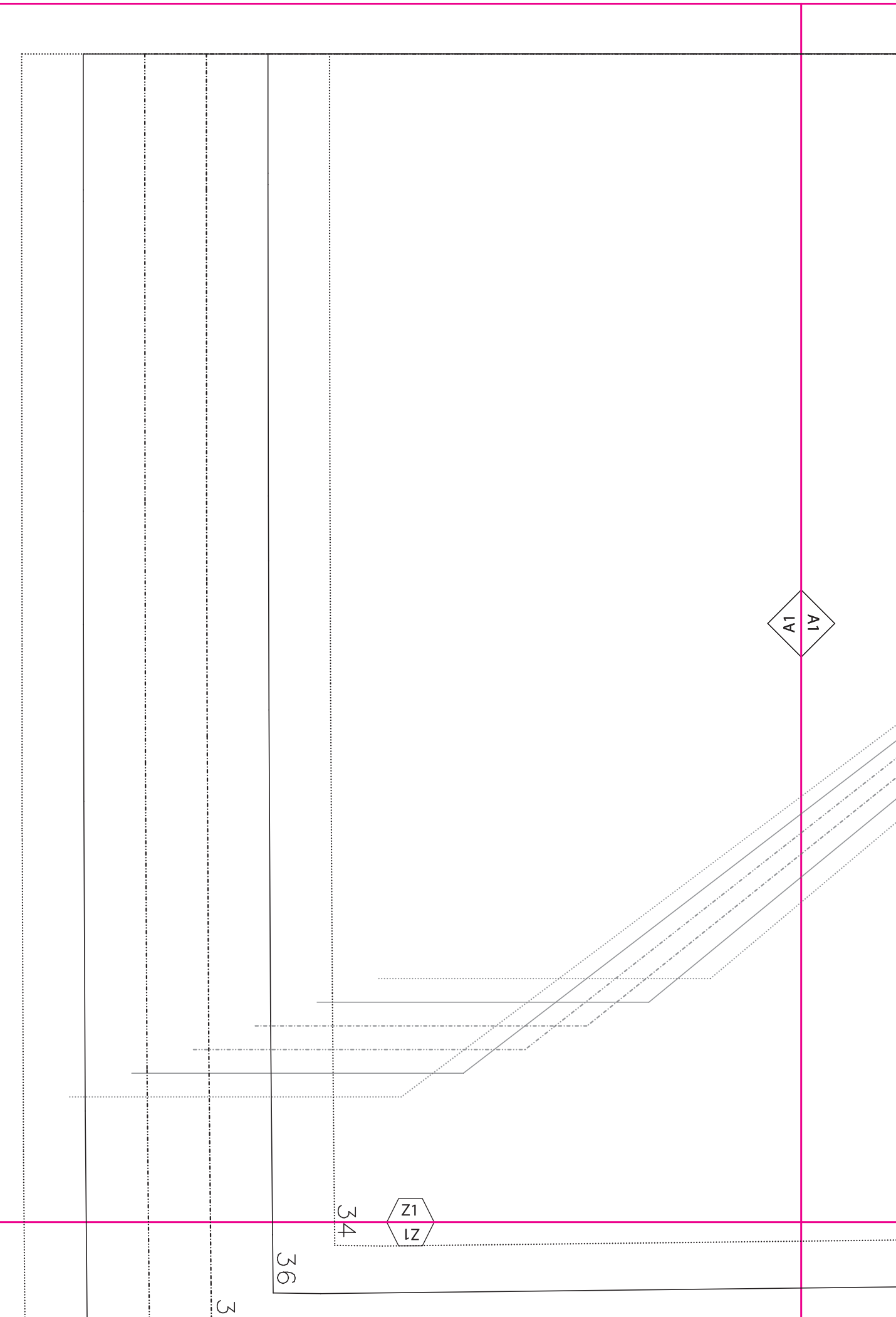
A1
1A

Z1
Z2

34

36

3



A2
ZV

Collegejacke // Workshop Nähen GU
Vorderteil
2 x Stoff
2 x Futter
inkl. Nahtzugabe



34

36

38

40

42

44

Position Taschen

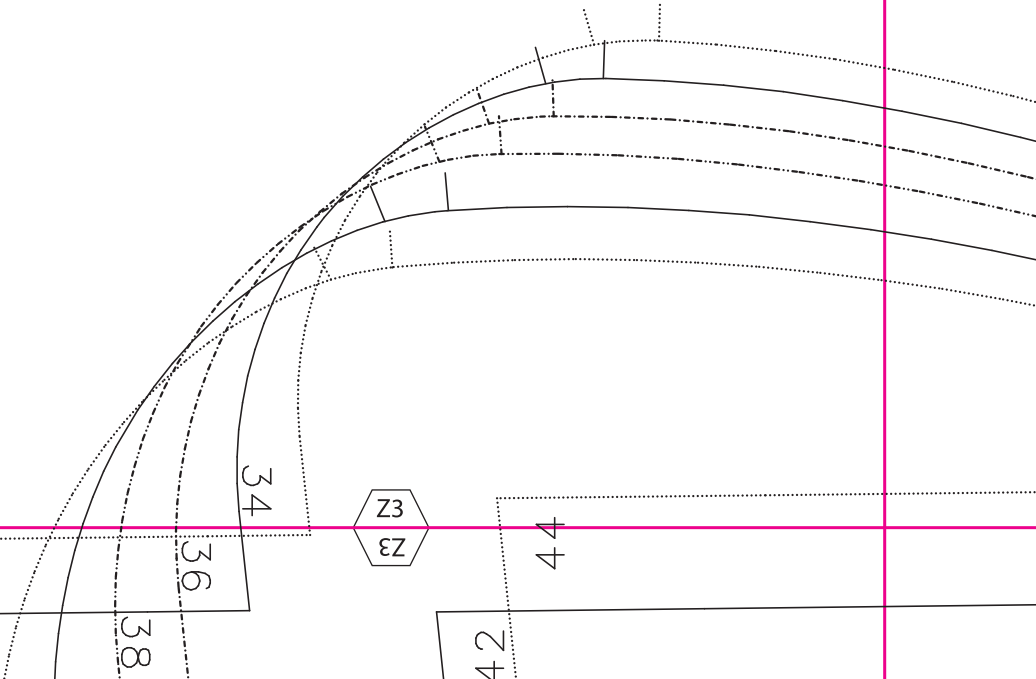
A1
LV

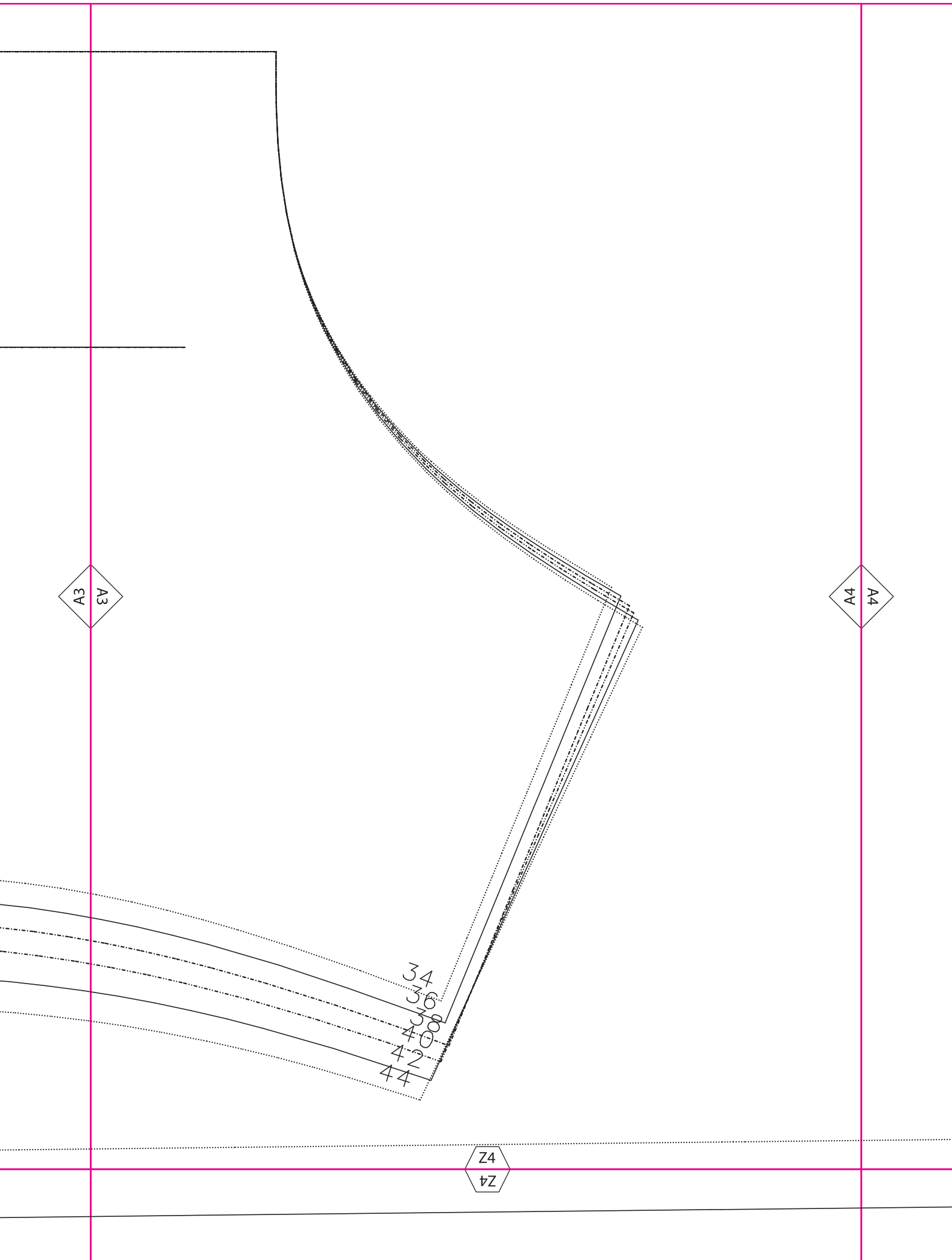
Z2
Z2

Fadenlauf

A2
ZV

A3
EV





A3

A4

Z4

34
37
36
40
42
44

A4
A4

A5
5A

Z5
SZ

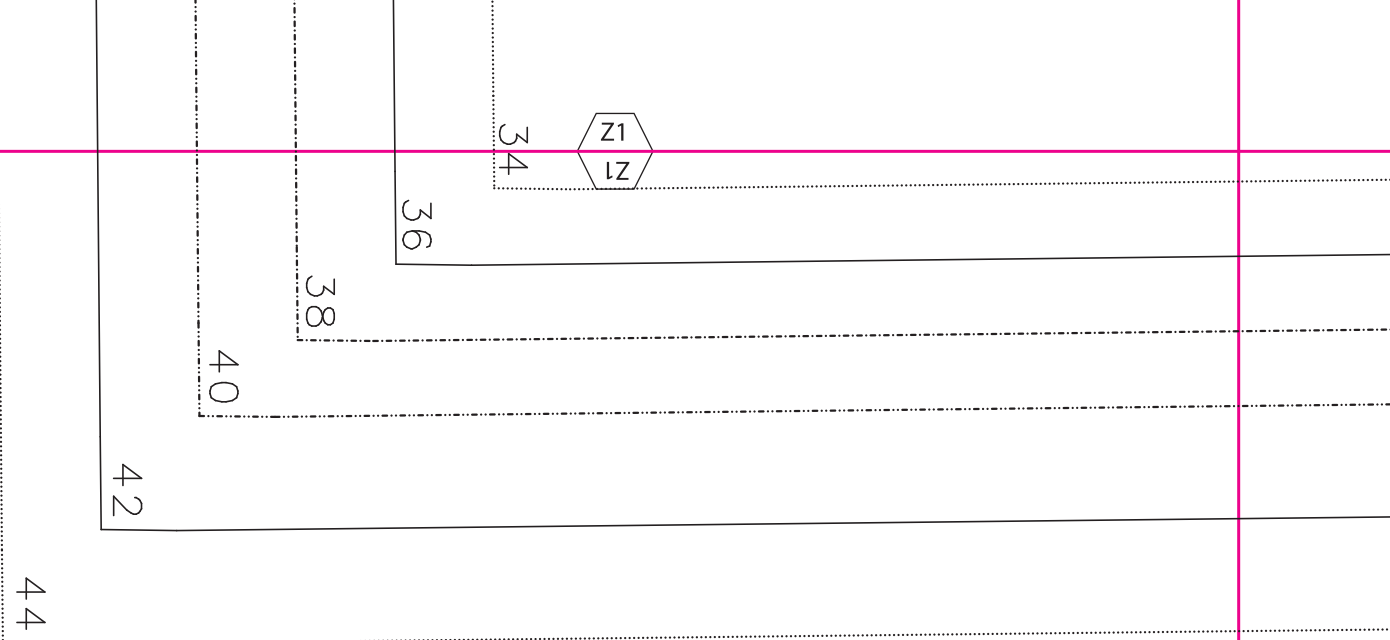
44	42	40	38	36	34
----	----	----	----	----	----

A5
5A

Z6
9Z

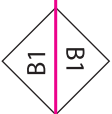
44

42



Collegelacke // Workshop Nähen GU
Kragen
2 x Stoff im Bruch
1 x Volumenvlies im Bruch
inkl. Nahtzugabe

Fadenlauf
↖

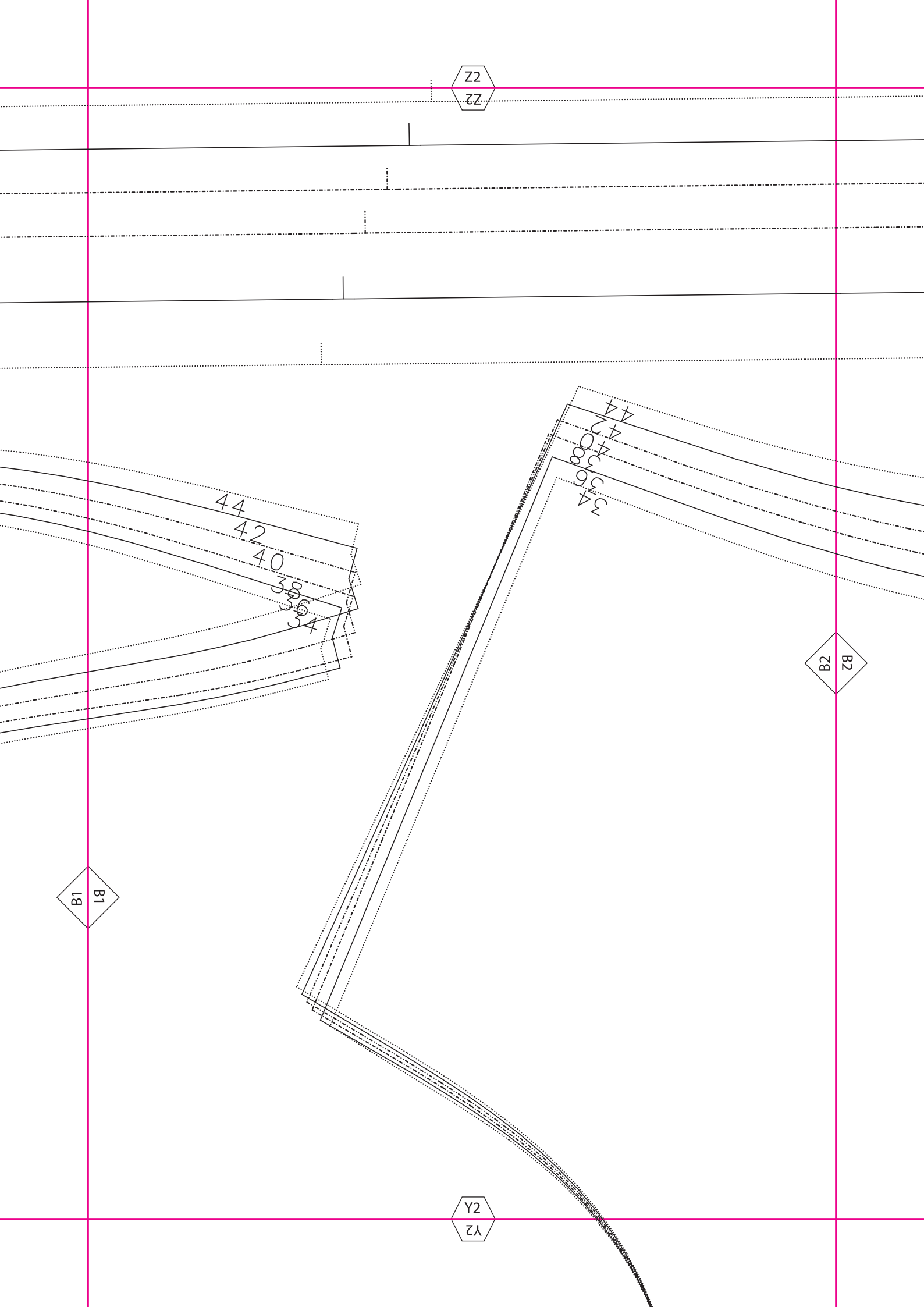


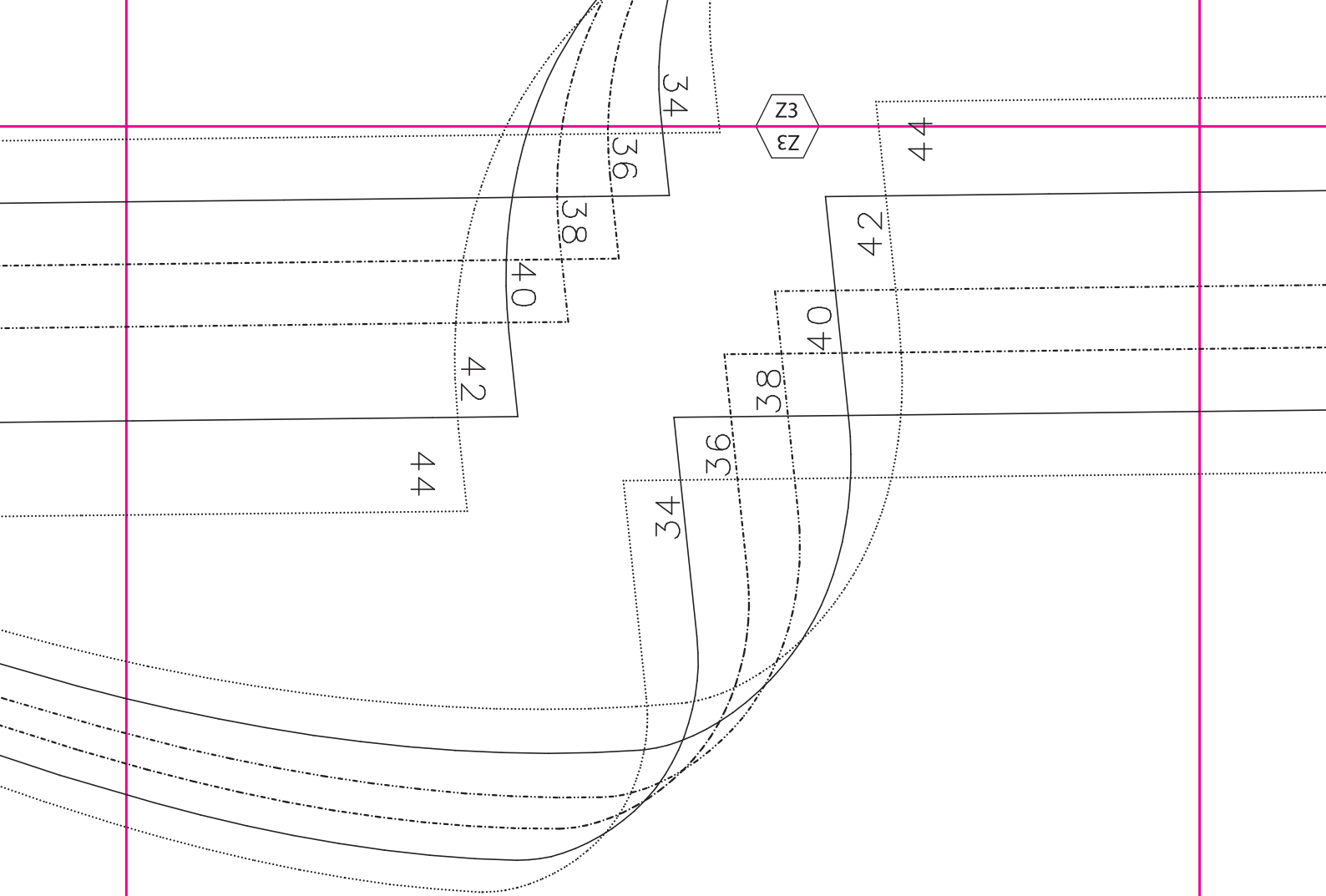
Z2
Z2

B2
ZB

B1
LB

Y2
Y2





B2
2B

B3
B3

Collegejacke // Workshop Nähen GU

- Vorderteil
- 2 x Quiltstoff
- 2 x Volumenvlies
- inkl. Nahtzugabe

Fadenlauf

Y3
Y3

Z4
Z4

B3
B3

B4
B4

Y4
Y4



Z5
SZ

40

38

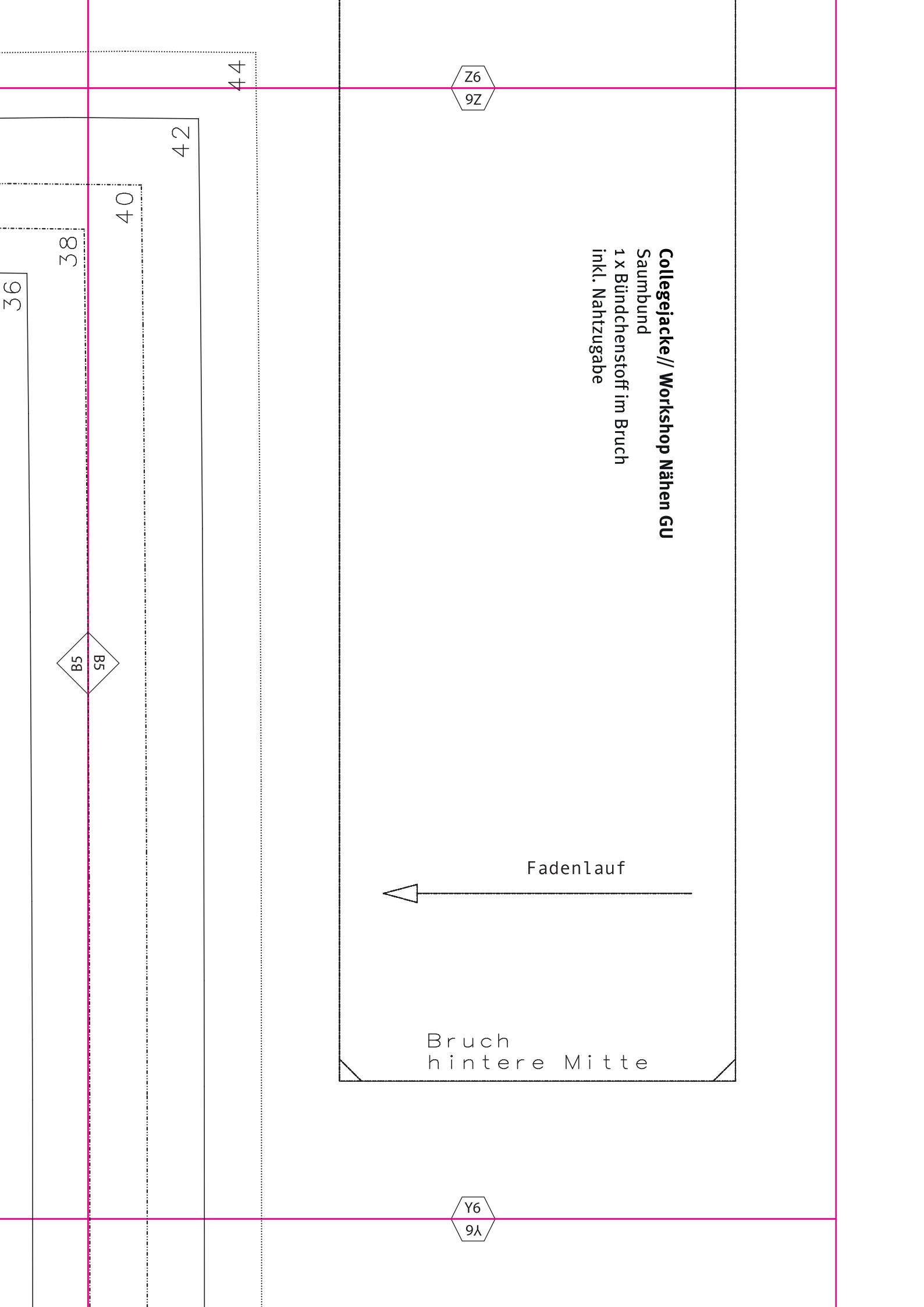
36

34

B4
4B

B5
5B

Y5
5Y



Y1
Lλ

Bruch hintere Mitte

C1
L2

44

42

40

38

36

34

X1
LX

C2
Z2

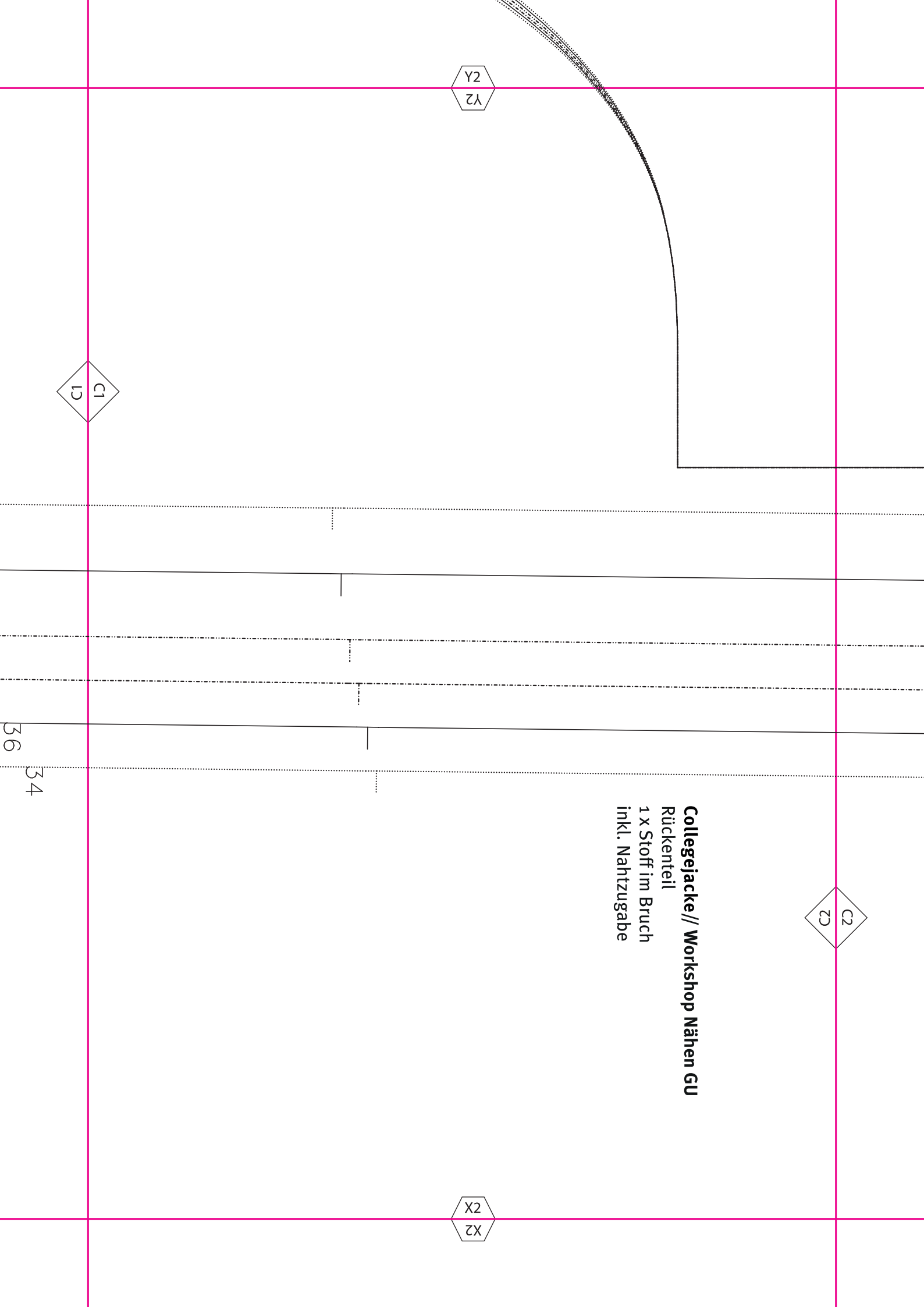
Collegejacke // Workshop Nähen GU
Rückenteil
1 x Stoff im Bruch
inkl. Nahtzugabe

X2
X2

Y2
Y2

C1
L2

36
34

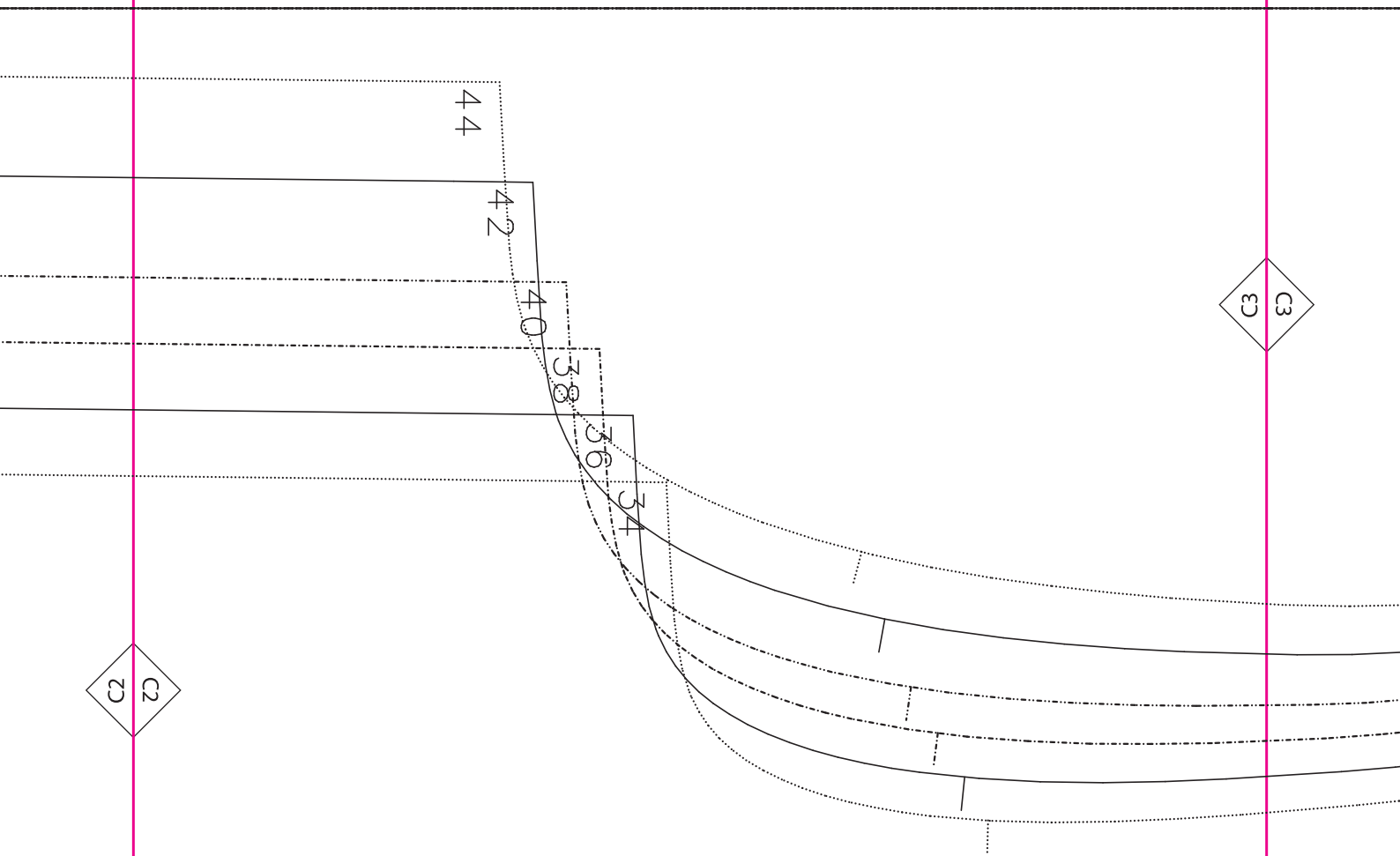


Y3
Ελ

Ε3
Ε3

Ε2
Ε2

X3
ΕΧ



Y4
4λ

C3
3C

C4
4C

44
42
40
38
36
34

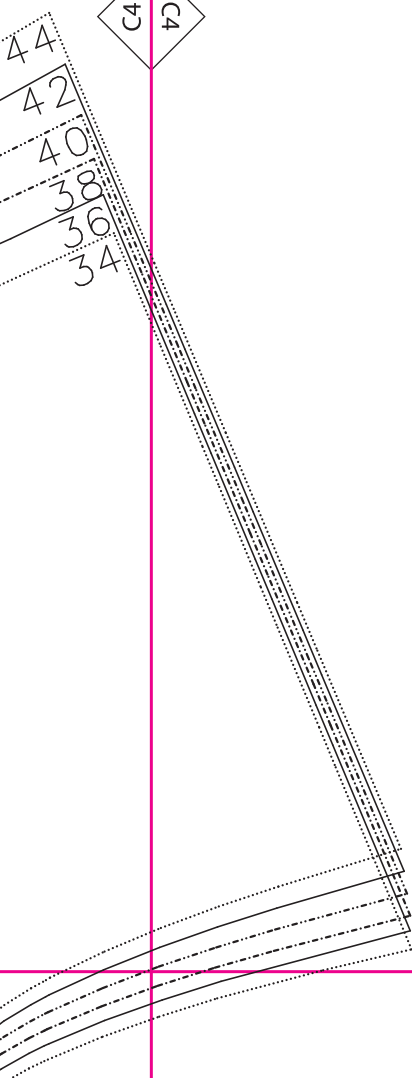
Schulter

X4
4X

Y5
5A

C5
5C

C4
4C



X5
5X

Y6
9λ

C5
52

44
42
40
38
36
34

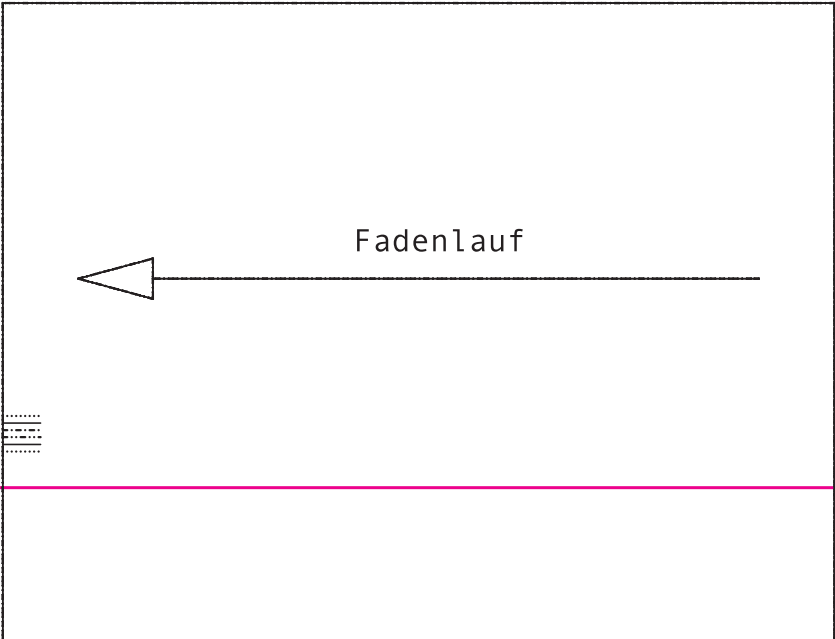
X6
9X

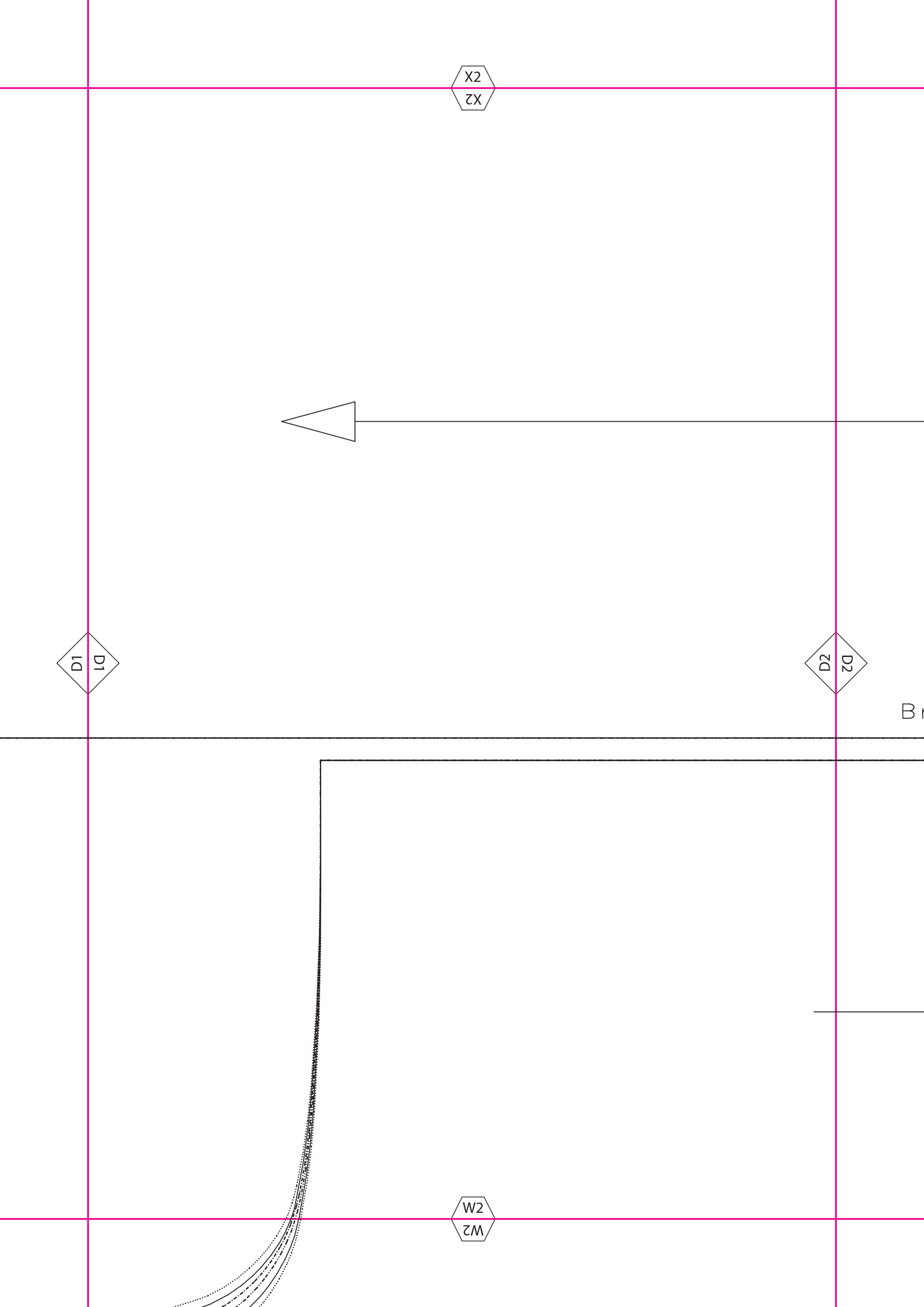
X1
LX

D1
ID

Fadenlauf

W1
LM





D1
D1

D2
D2

X2
X2

W2
W2

B

X3
εX

Fadenlauf

D2
ZD

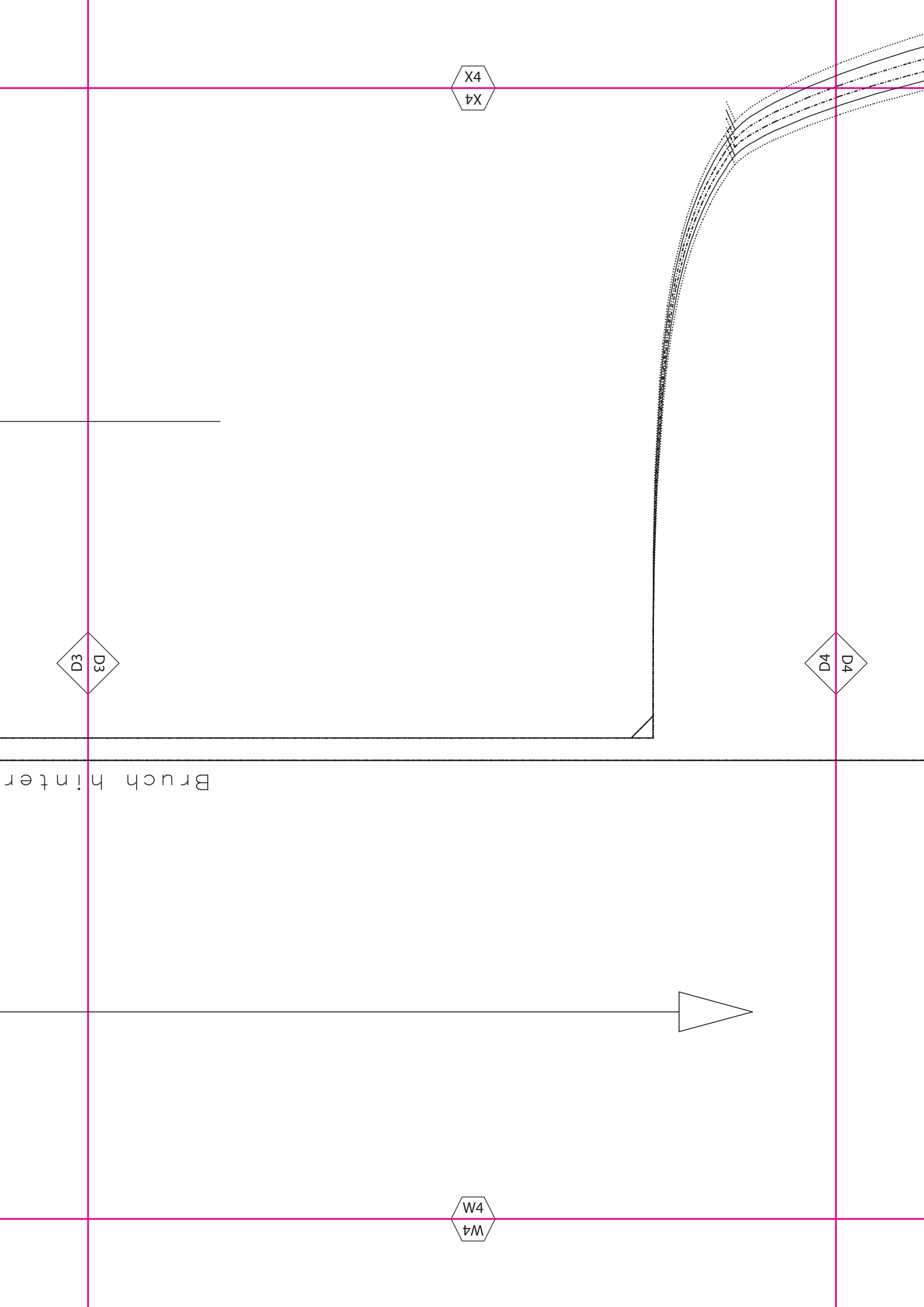
Bruch hintere Mitte

D3
D3

uch hintere Mitte

Fadenlauf

W3
εM



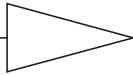
X4
X4

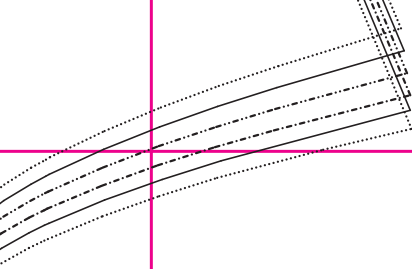
D3
D3

D4
D4

W4
W4

Bruch hinter





X5
SX

D4
4D

D5
5D

W5
5M

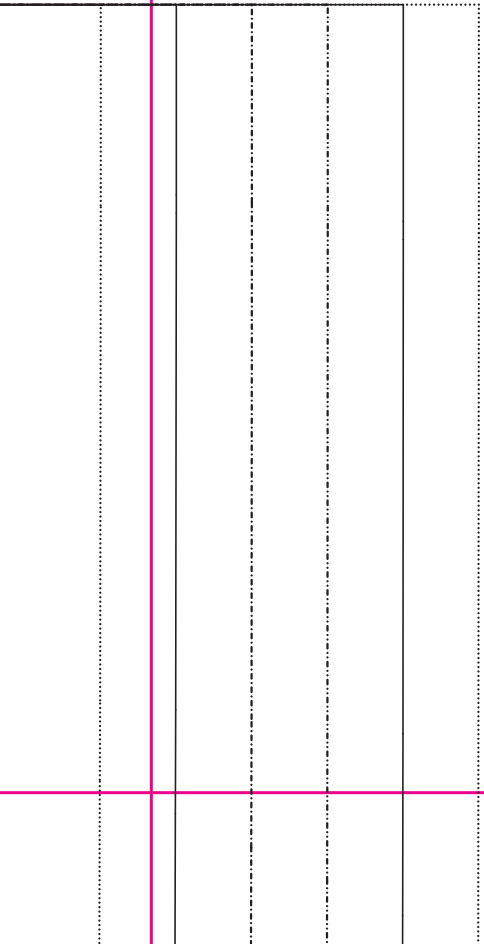
Collegejacke // Workshop Nähen GU
Reißverschluss-Leiste
4 x Stoff
2 x Bügelvlies
inkl. Nahtzugabe

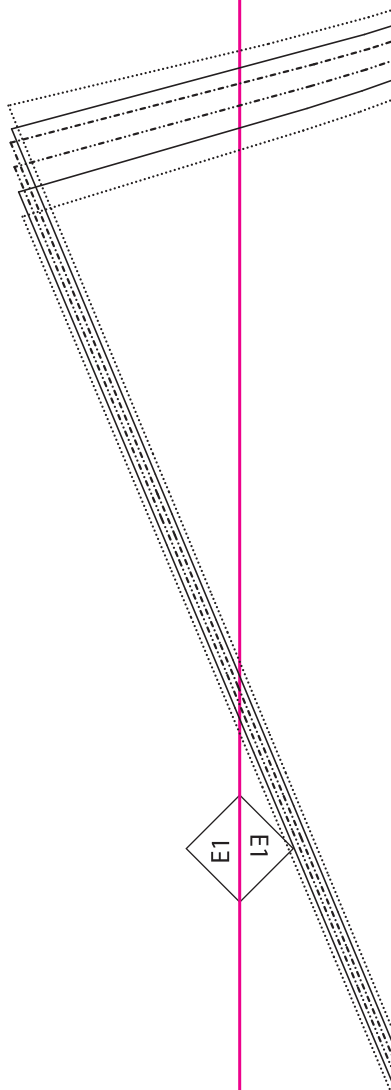


X6
9X

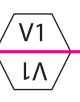
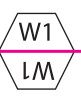
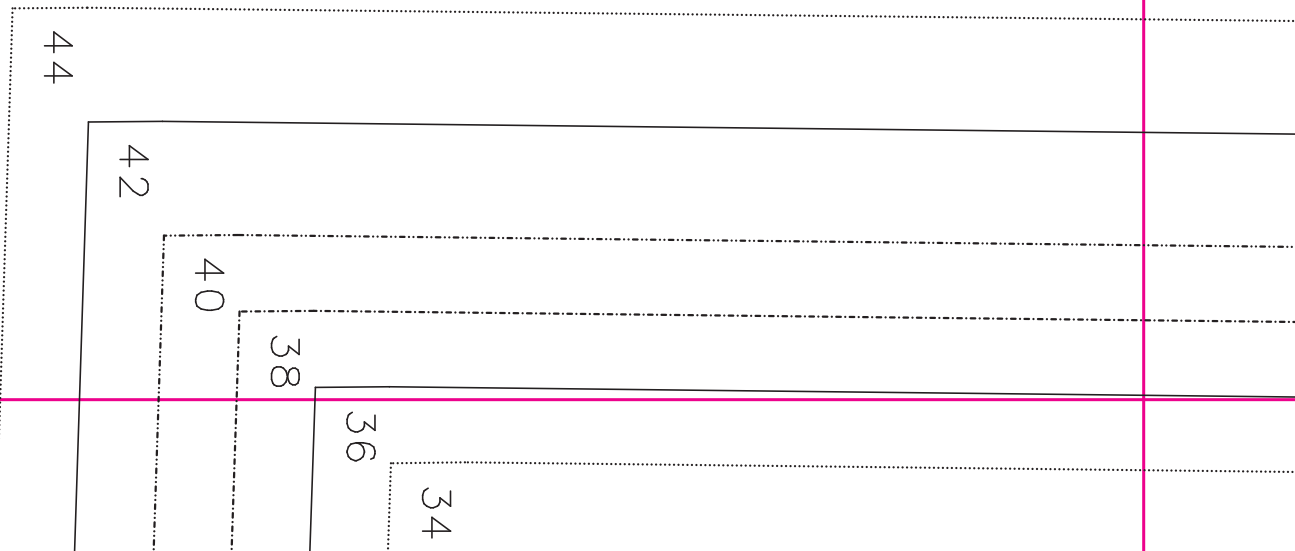
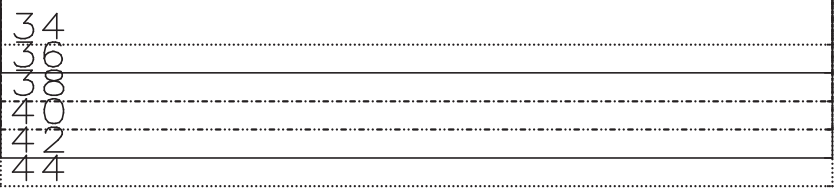
W6
9M

D5
5D





Collegejacke // Workshop Nähen GU
Ärmelbündchen
2 x Bündchenstoff
inkl. Nahtzugabe



W2
W2

E1
E1

E2
E2

44
42
40
38
36
34

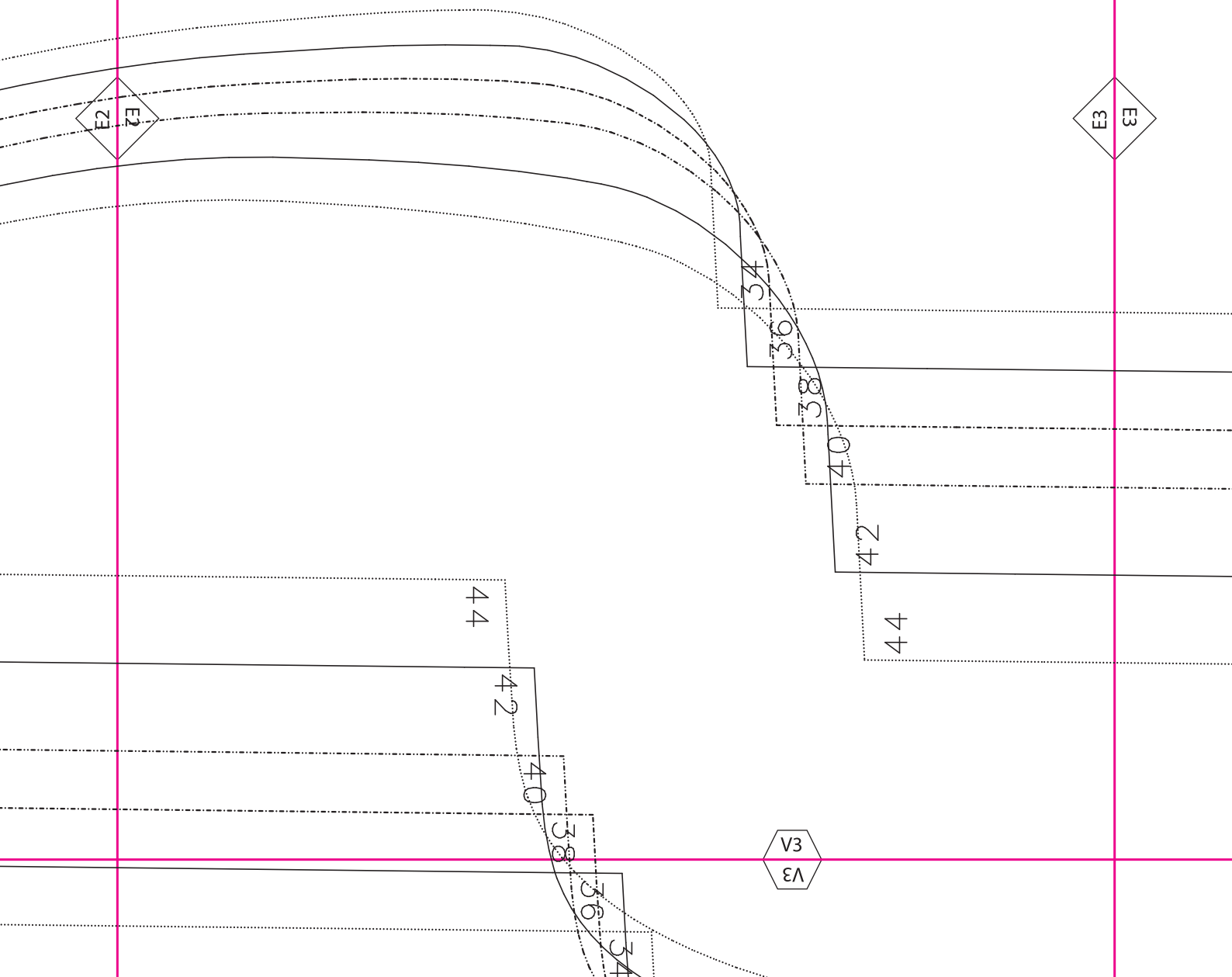
V2
V2

W3
ΕΜ

E3
Ε3

E2
Ε2

V3
ΕΛ



Collegejacke // Workshop Nähen GU
Rückenteil
1 x Quiltstoff im Bruch
1 x Volumenvlies im Bruch
inkl. Nahtzugabe

W4

V4

E3

E4

44

42

40

38

36

34

W5
SM

E4
43

E5
53

34

36

38

40

V5
SA

44

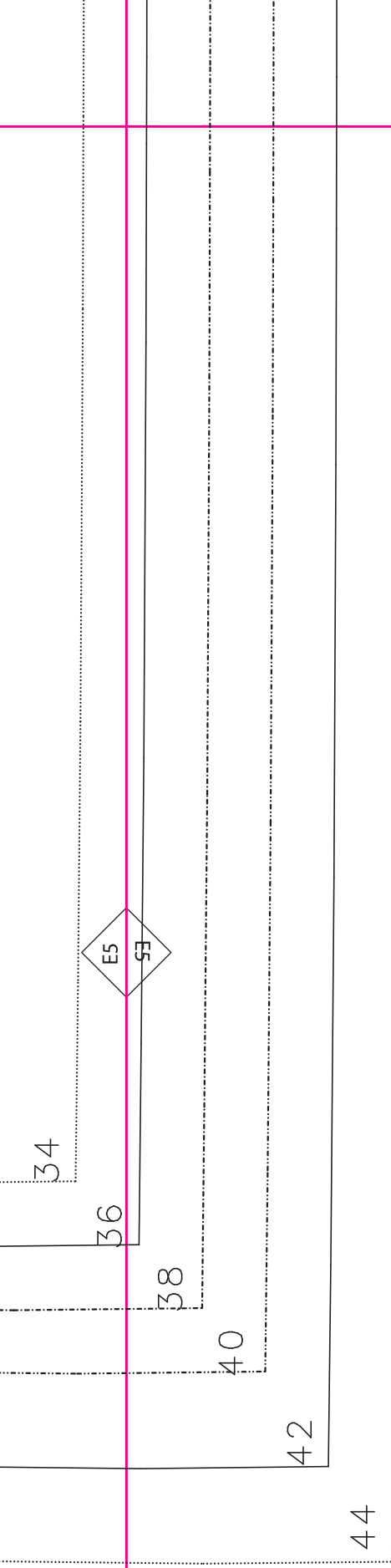
42

40

38

36

34



W6
9M

Fadenlauf

V6
9Λ

V1
V1

40

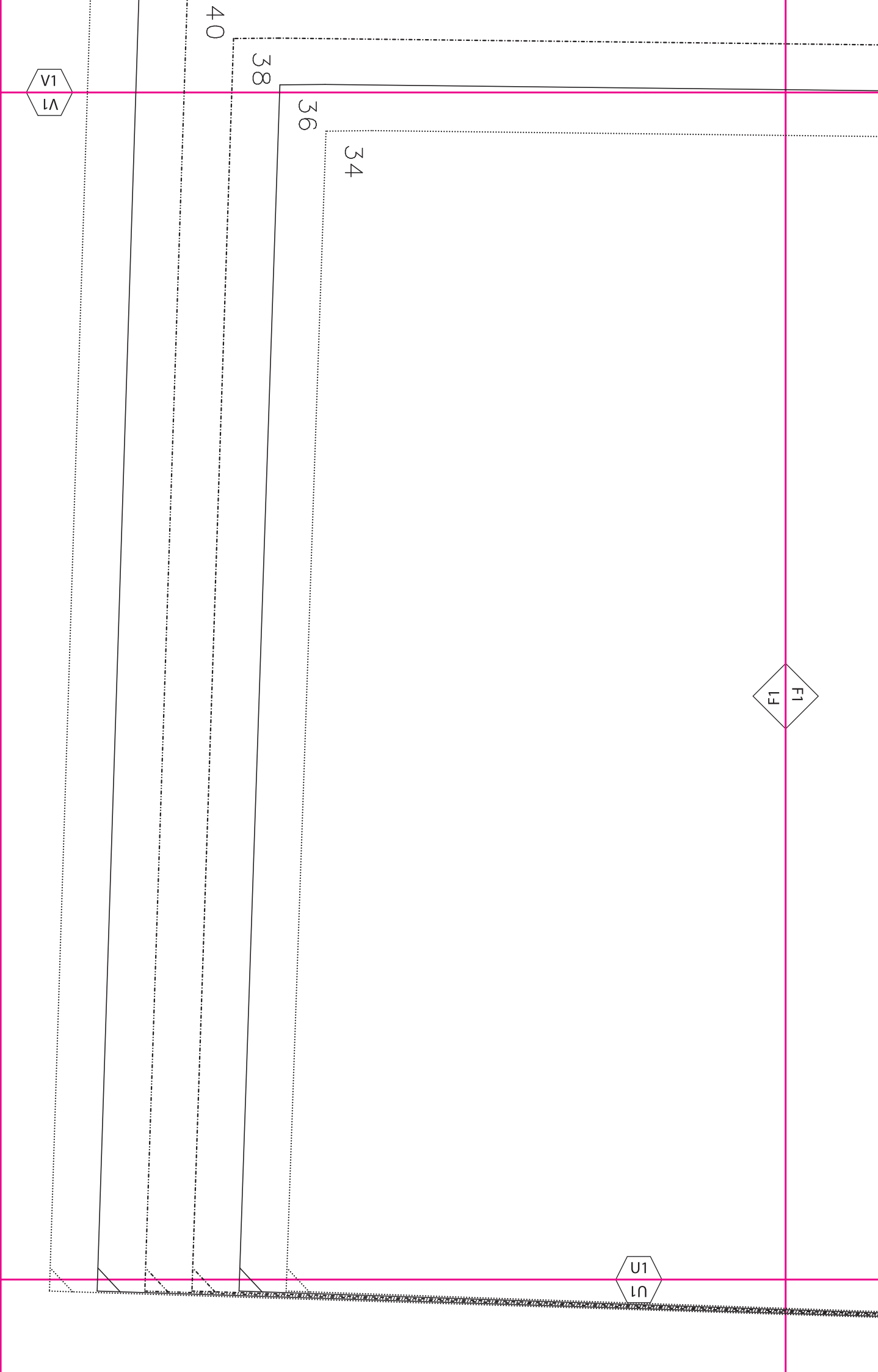
38

36

34

F1
F1

U1
U1



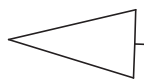
F2
Z2

Collegejacke // Workshop Nähen GU
Rückenteil
1 x Futter im Bruch
inkl. Nahtzugabe

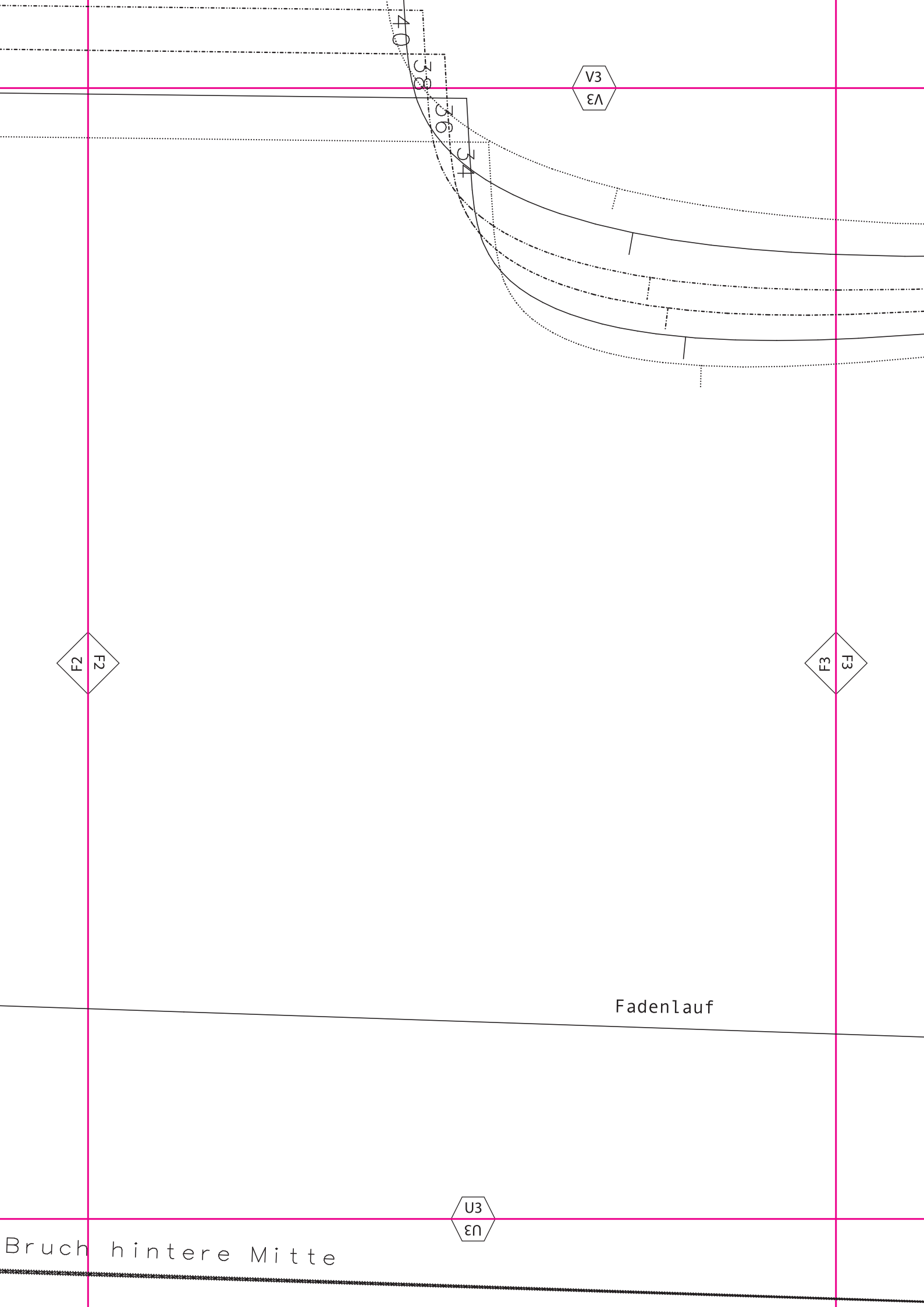
V2
V2

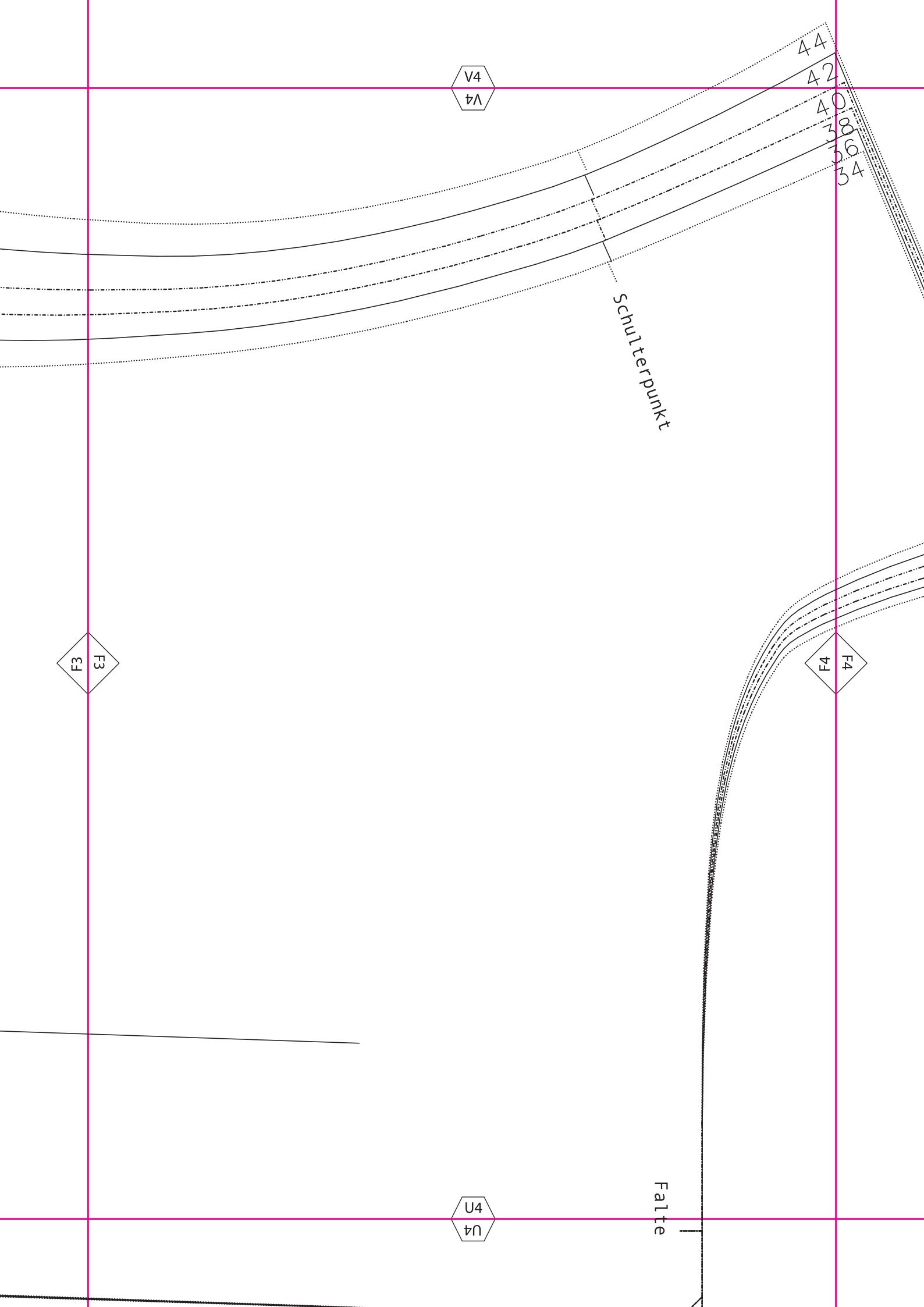
U2
U2

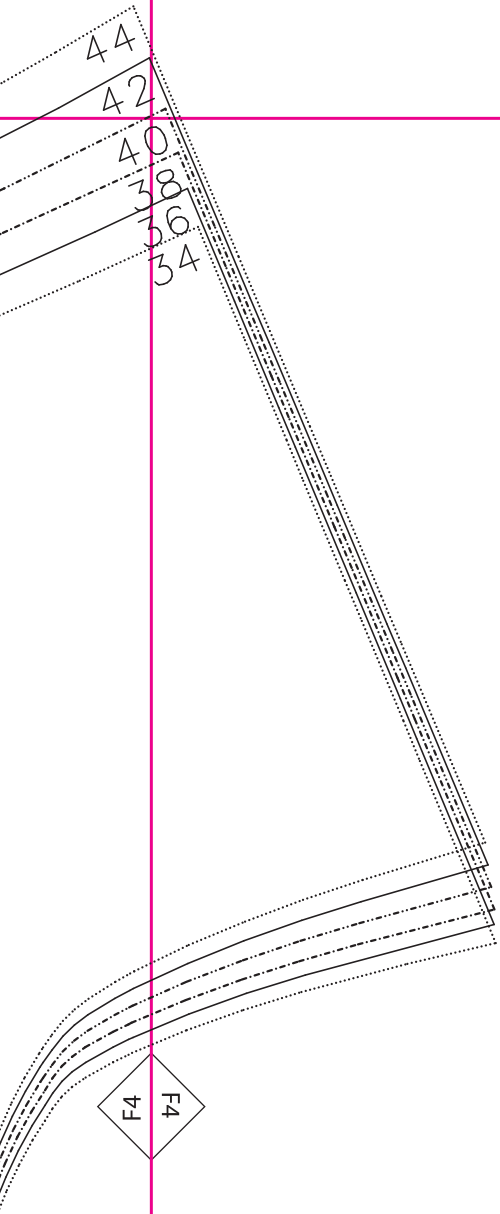
F1
L1



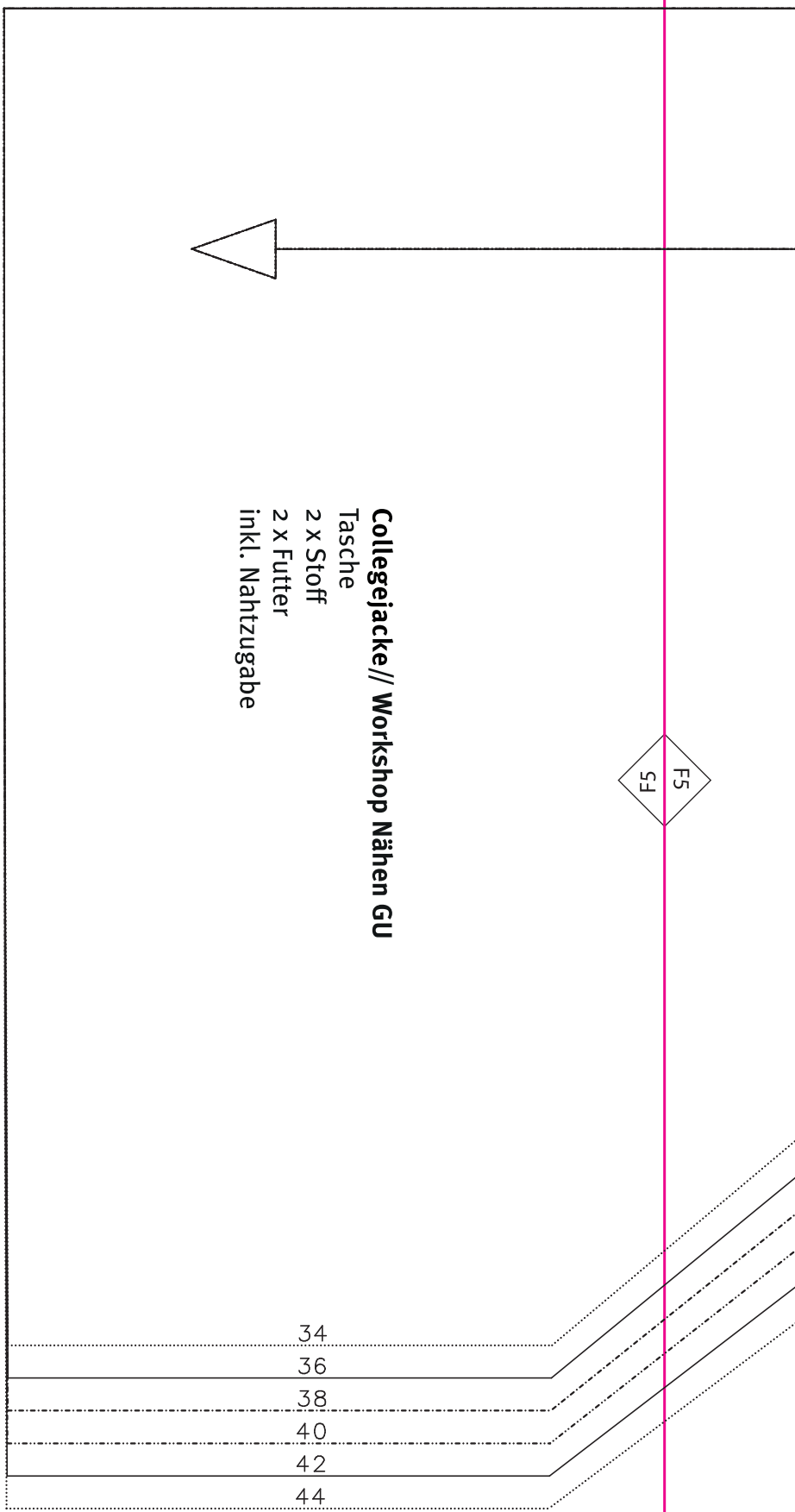
Bruch hint







V5
5Λ



Collegejacke // Workshop Nähen GU
 Tasche
 2 x Stoff
 2 x Futter
 inkl. Nahtzugabe

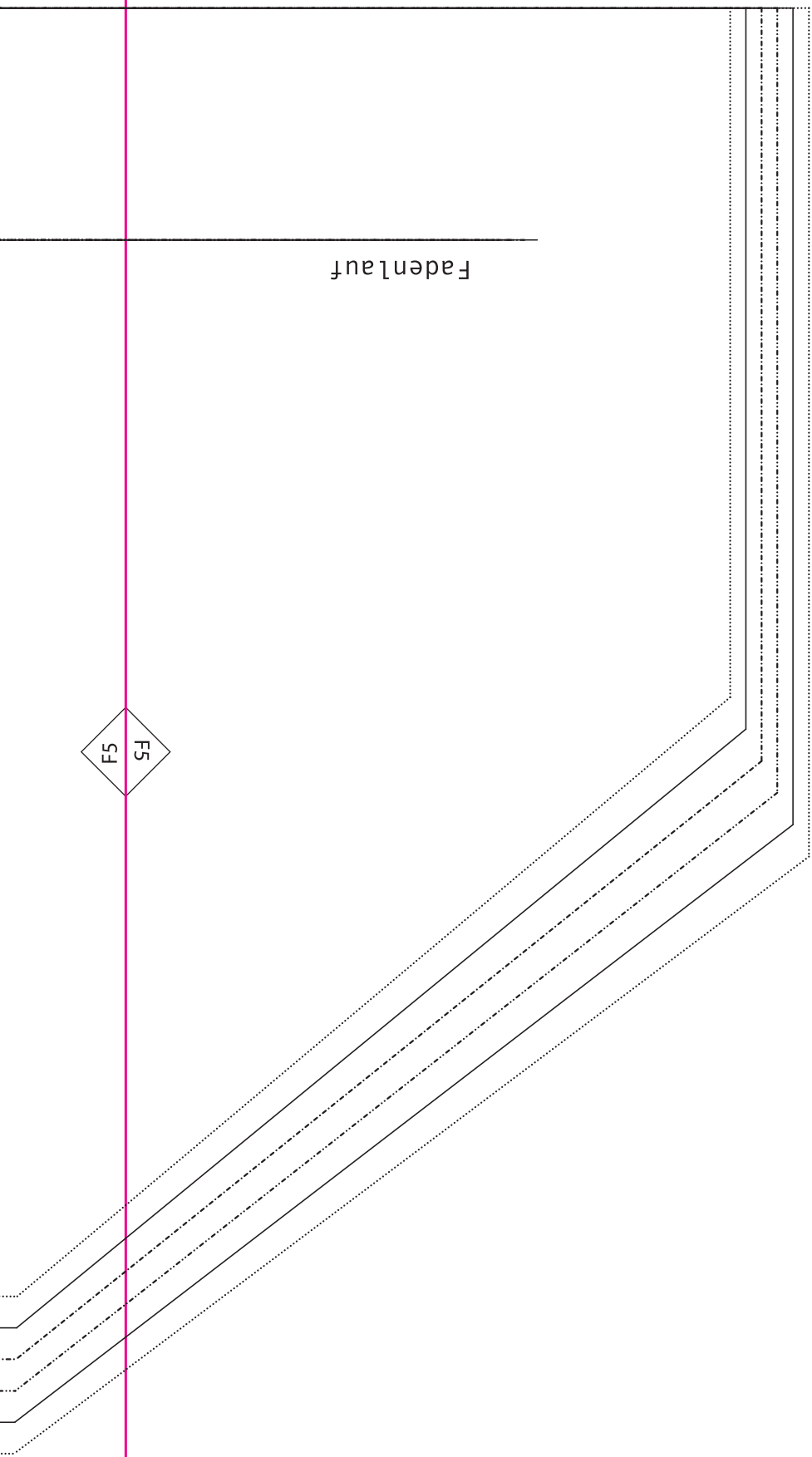
U5
5N

V6
9Λ

Fadenlauf

F5
5F

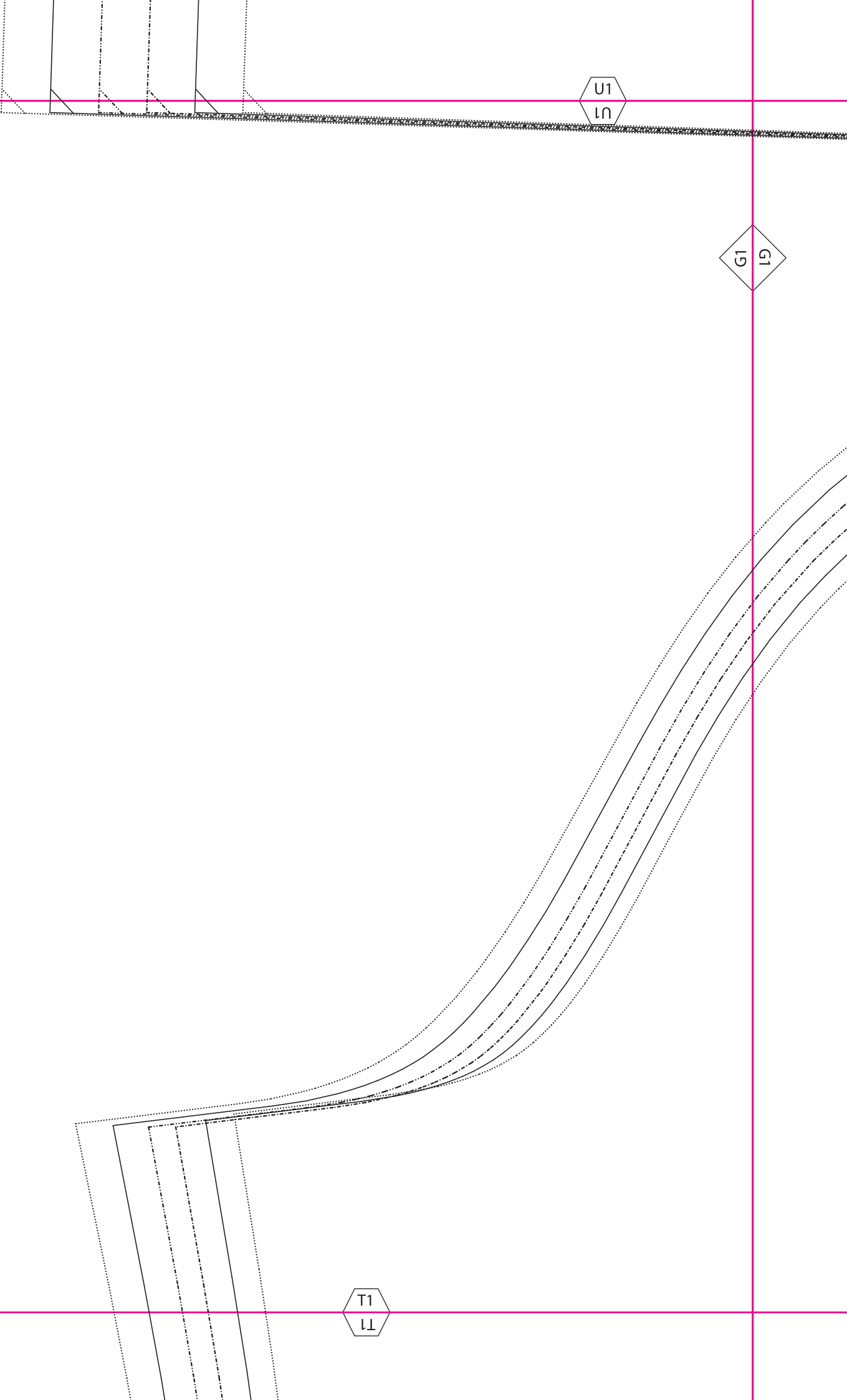
U6
9Π



U1
L1

G1
G1

T1
L1



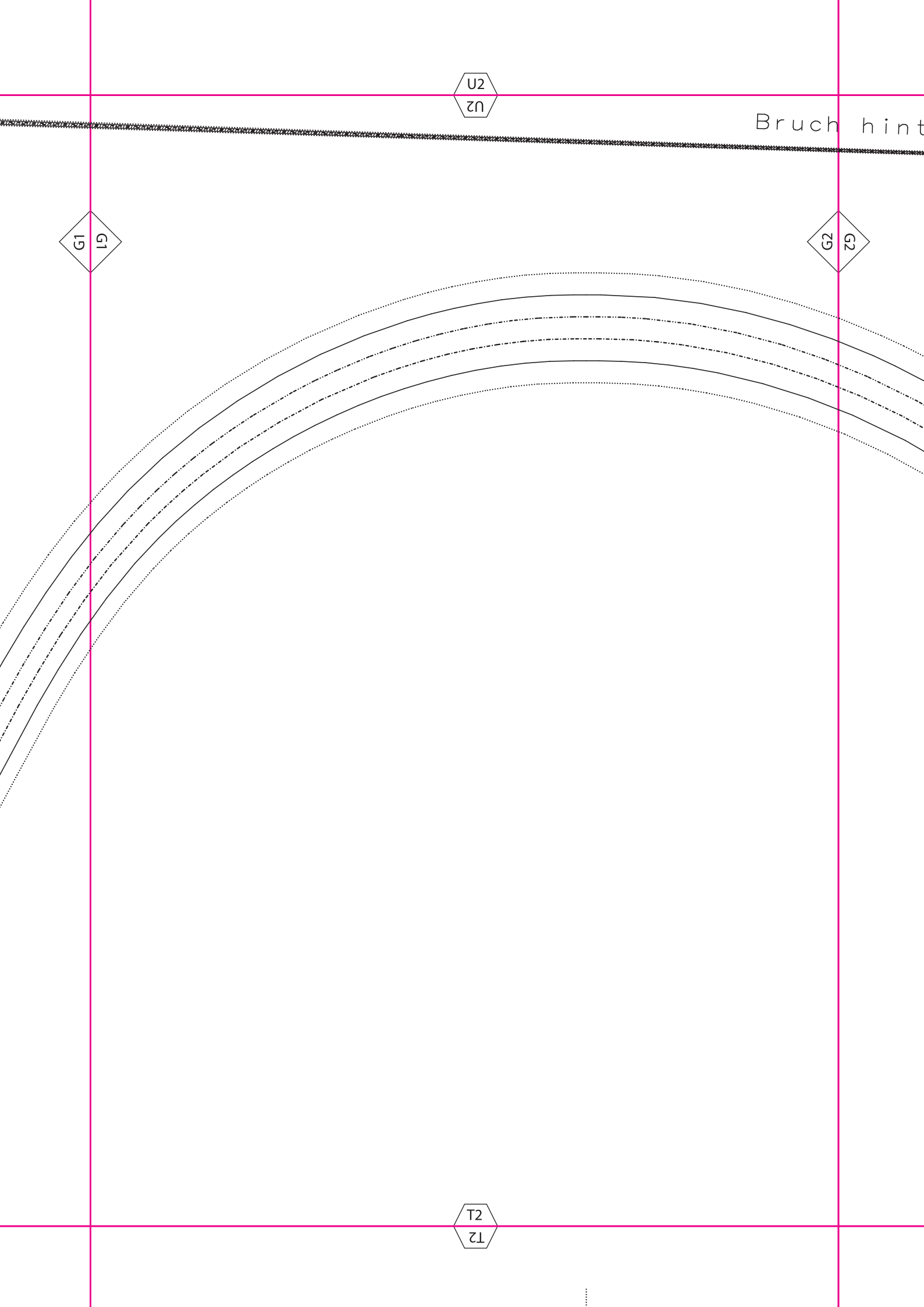
U2
U2

Bruch hint

G1
I9

G2
G2

T2
T2



Bruch hintere Mitte

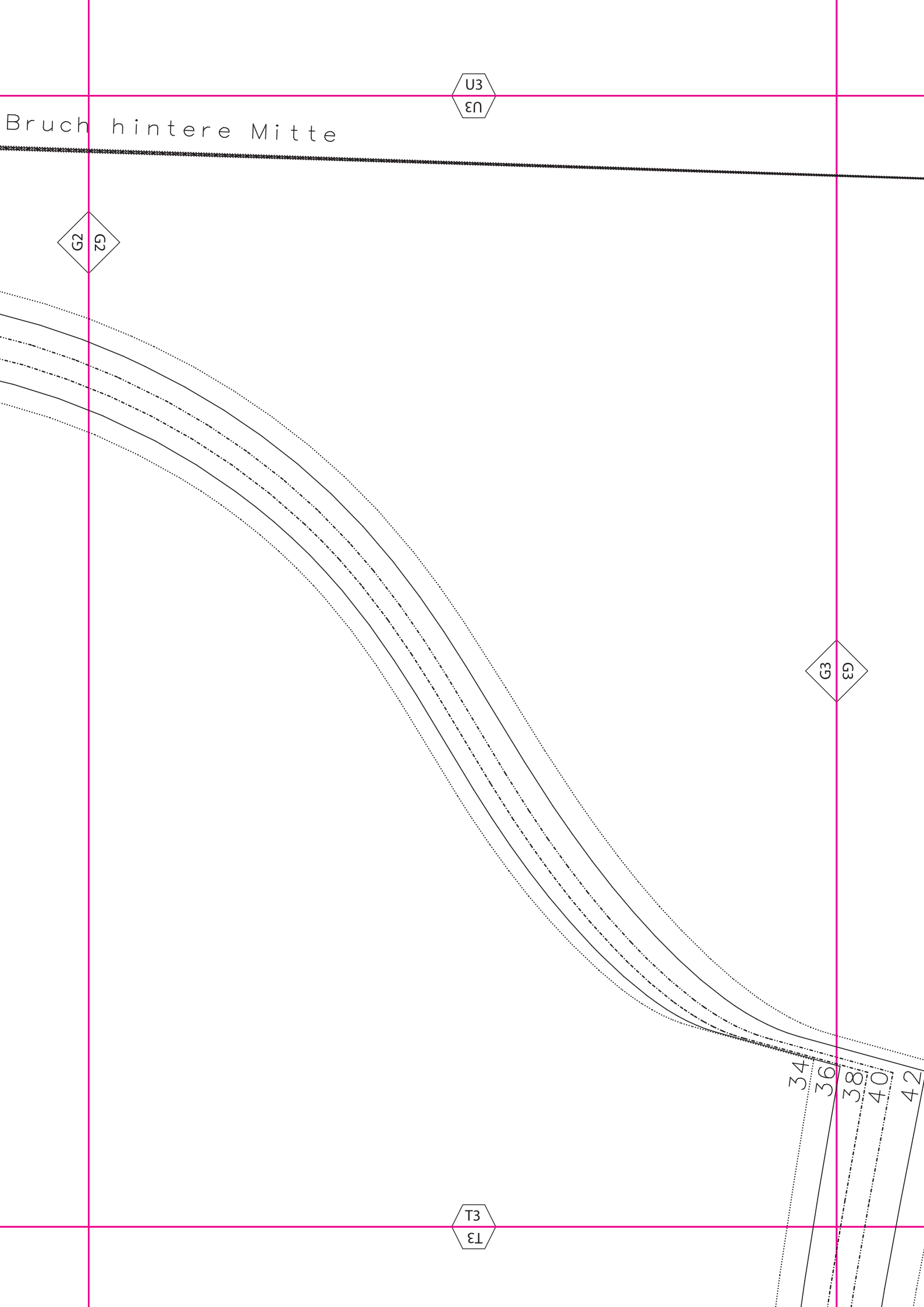
U3
εη

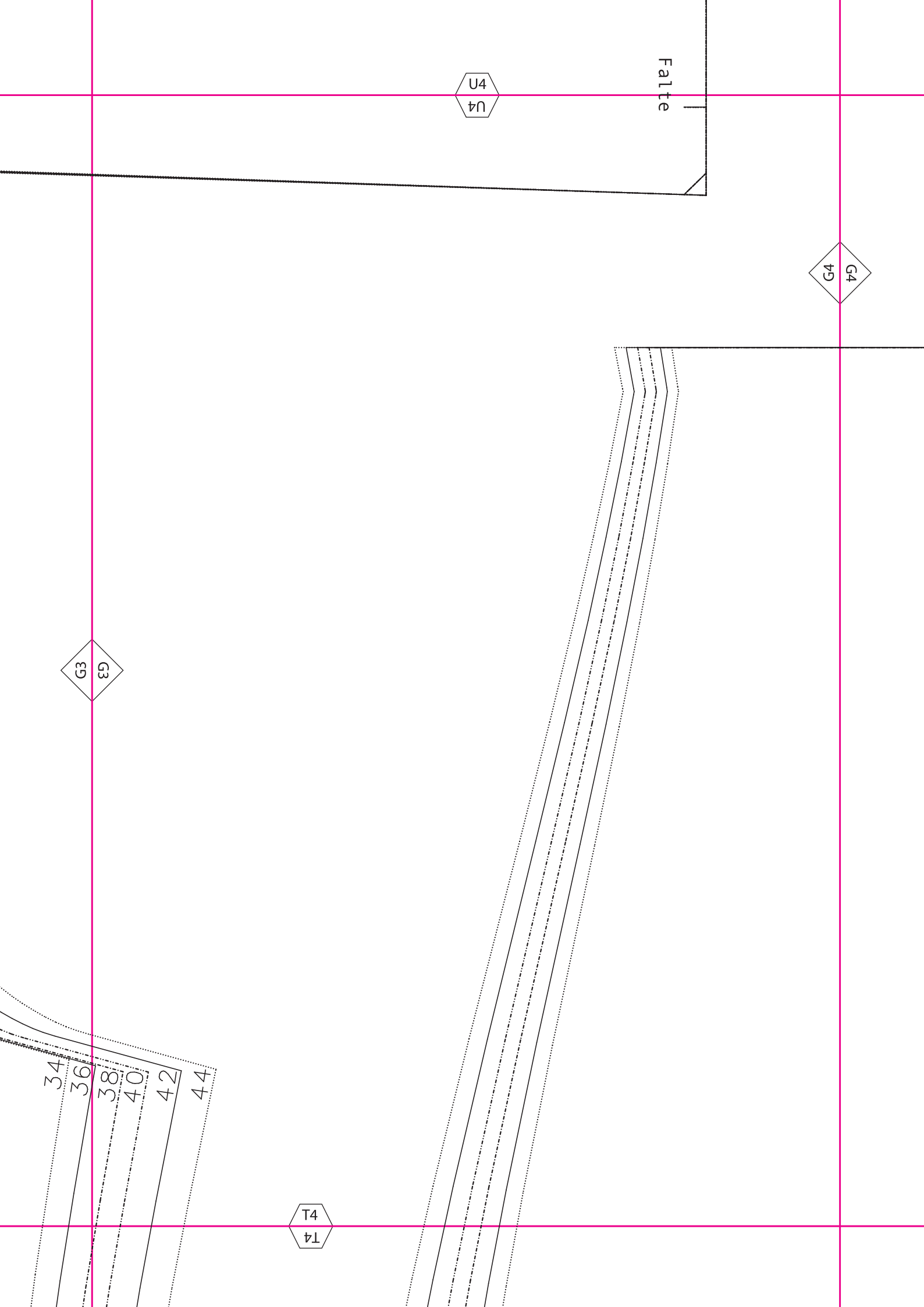
G2
εη

G3
εη

T3
ελ

34
36
38
40
42





42
44

U5
5U

G4
4G

G5
5G



T5
5T

U6
90

G5
G5

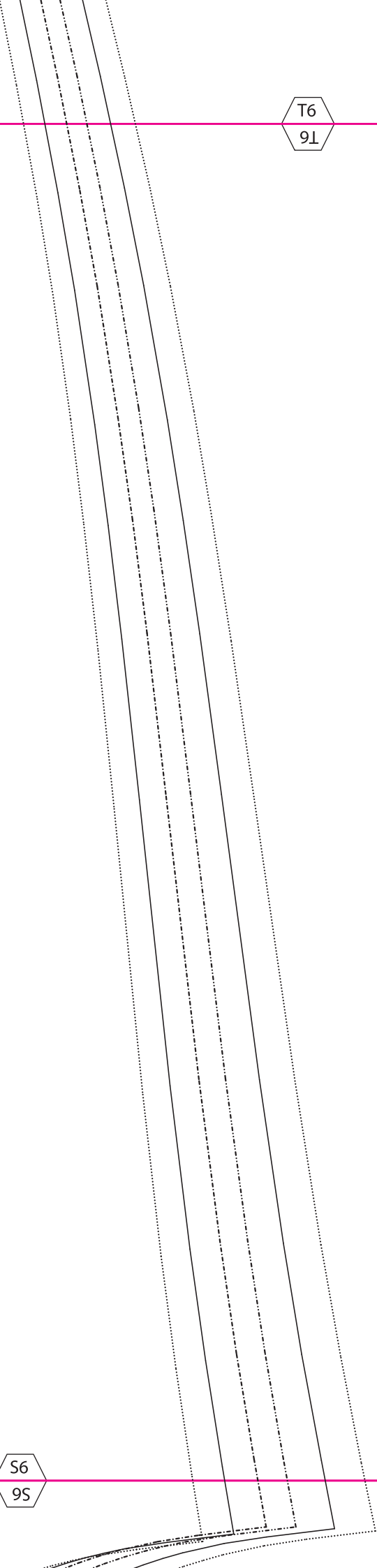
4
2
1
3
4

T6
91

T6
9L

H5
5H

S6
9S



T5
T5

H4
H4

H5
H5

S5
S5

H4
H4

T4
T4

H3
H3

S4
S4

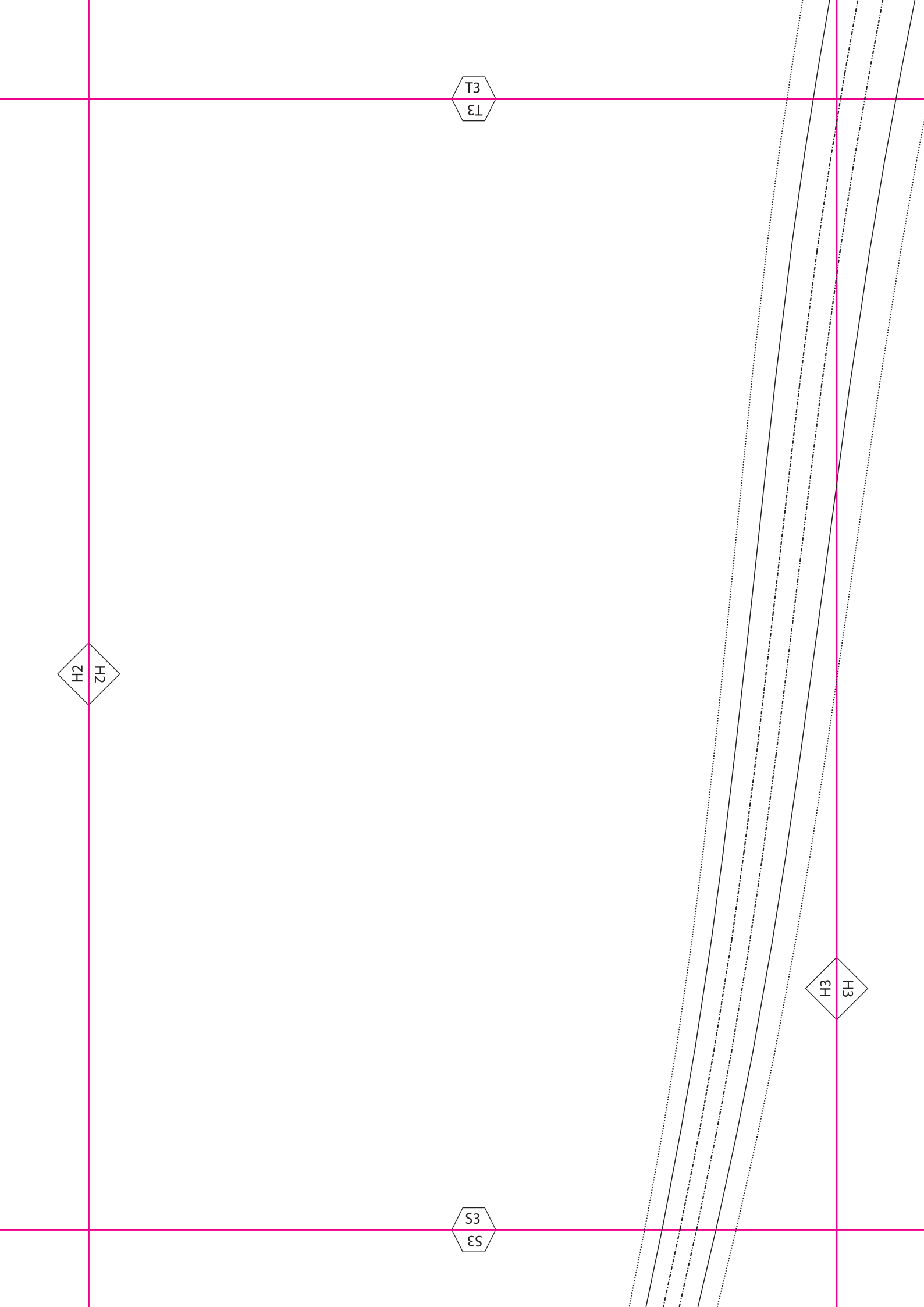
34
36
38
40
42
44

T3
E1

H2
2H

S3
E3

H3
EH



T2
Z1

Fadenlauf

Collegejacke// Workshop Nähen GU
Ärmel
2 x Quiltstoff
2 x Volumenvlies
inkl. Nahtzugabe

H1
H1

H2
Z1

S2
Z2

T1
T1

H1
H1

S1
S1

S1
1S

44
42
40
38
36
34

11
11

S2
S2



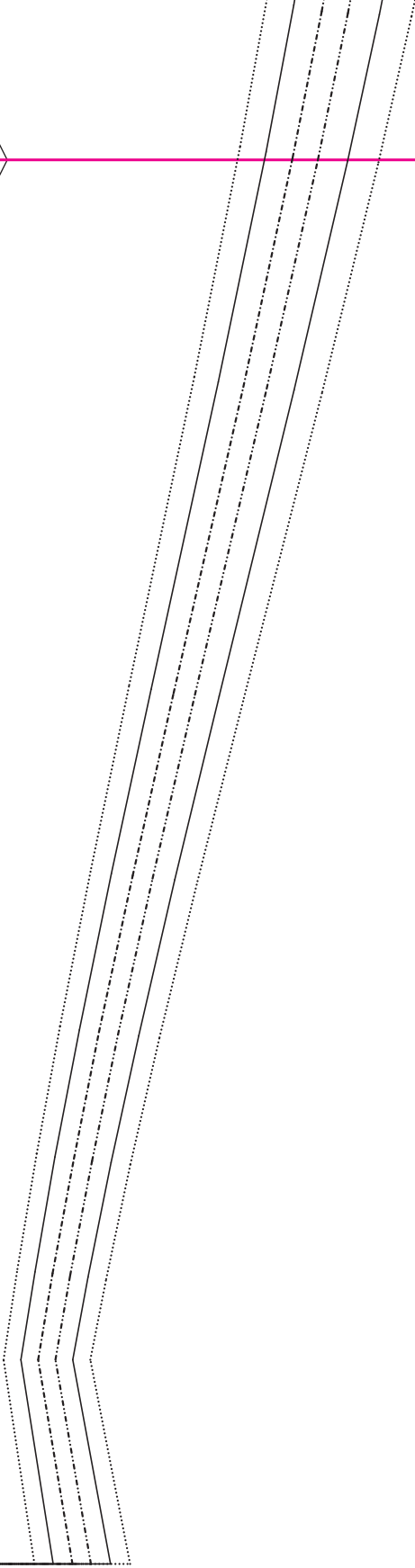
11
11

12
21

S3
E3

I3
E3

I2
E1

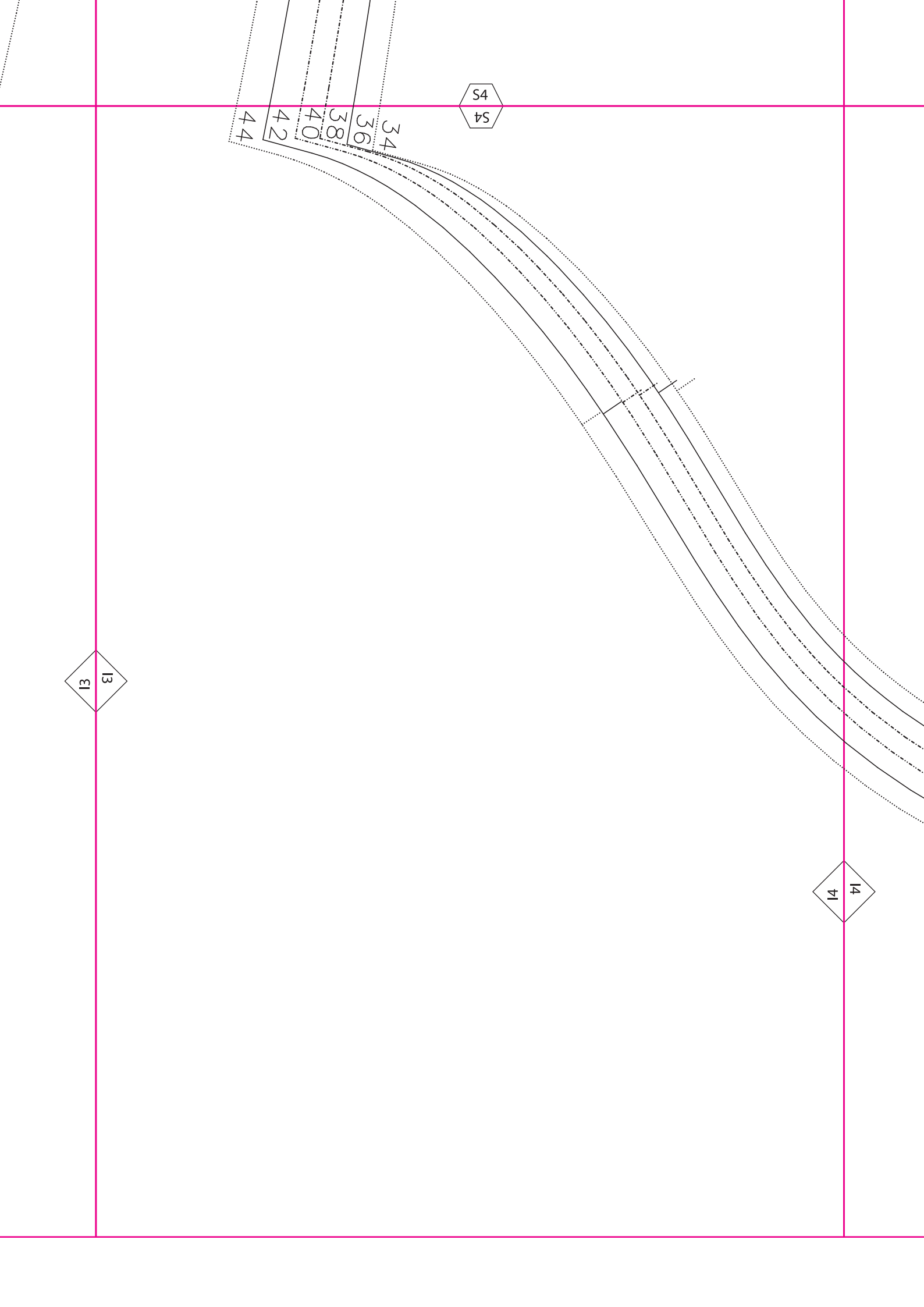


S4
S4

34
36
38
40
42
44

13
E1

14
E1



55

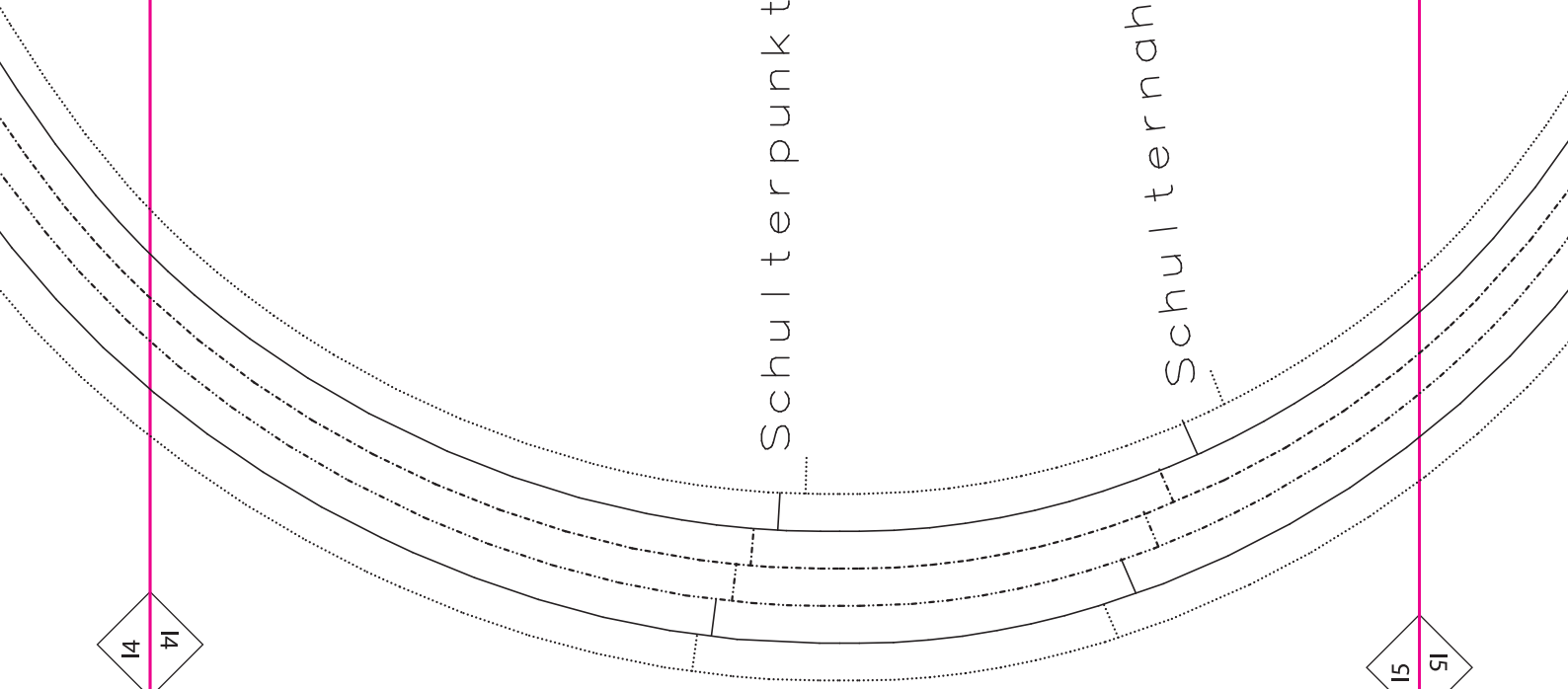
Collegejacke // Workshop Nähen GU
Ärmel
2 x Stoff
2 x Futter
inkl. Nahtzugabe

Schulterpunkt

Schulternaht

14

15



S6
9S

15
91

