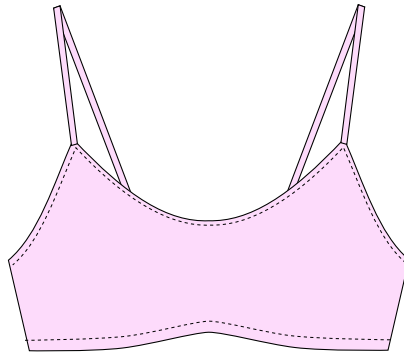


Jamí

ECLIPSE LINGERIE STUDIO

Brassière XXS > XXL



Tour de poitrine en cm :

XXS = 80

XS = 84

S = 88

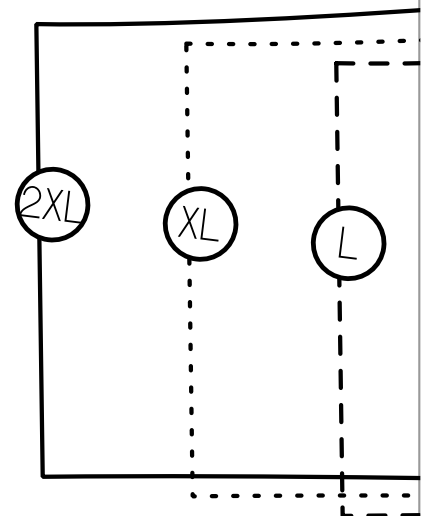
M = 92

L = 96

XL = 100

2XL = 104

3XL = 108



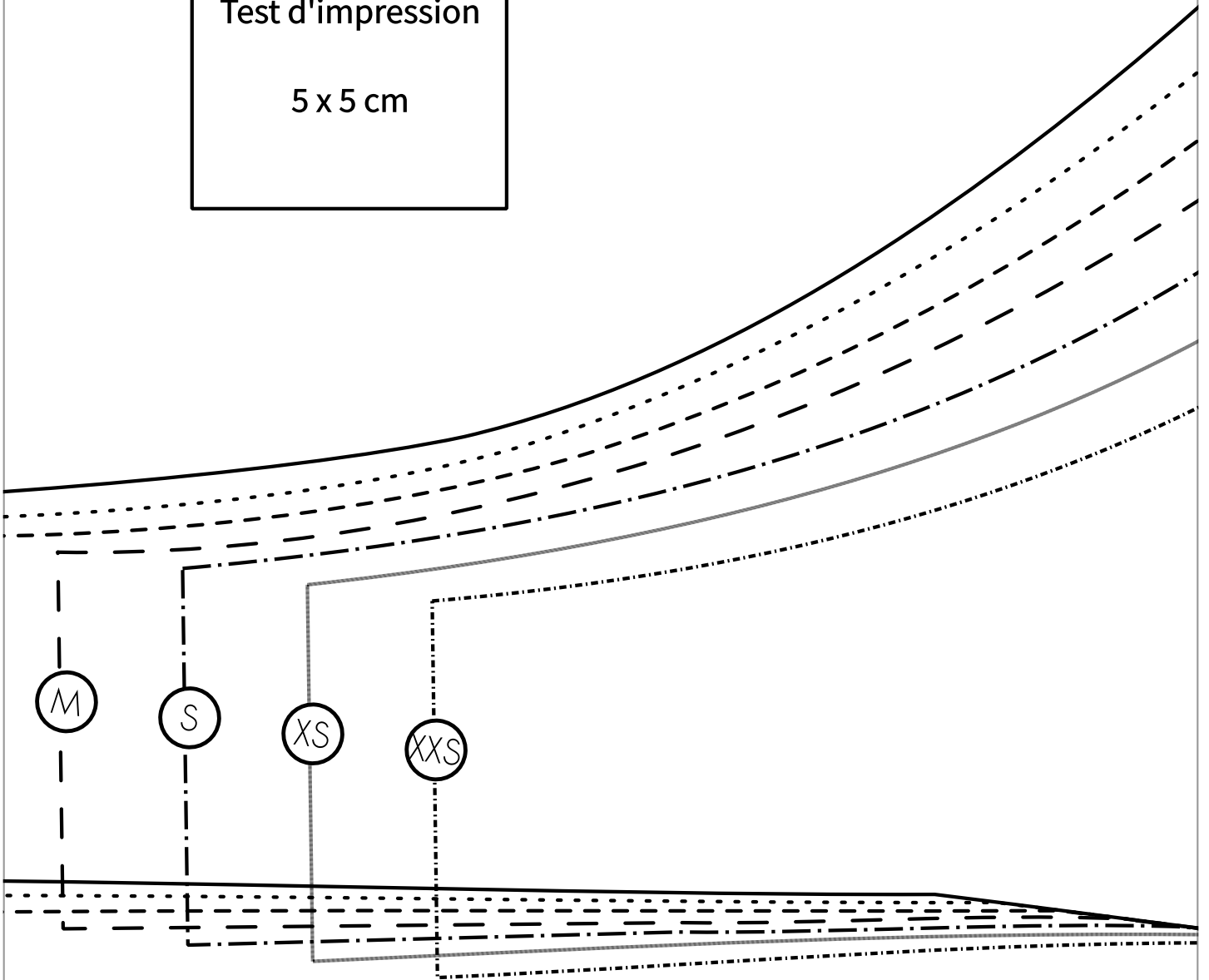
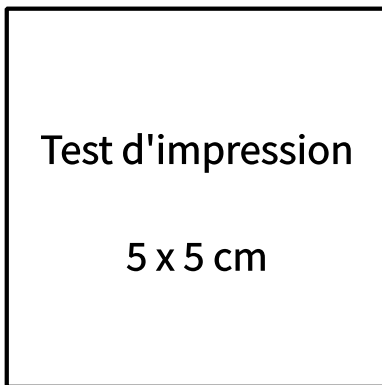
Marges de coutures NON INCLUSES

A2

A2



tAMI, patron par Éclipse Lingerie Studio. Ce patron est réservé à un usage personnel. Tout usage à des fins commerciales est interdit ; reproduction et distribution même partielle interdite.

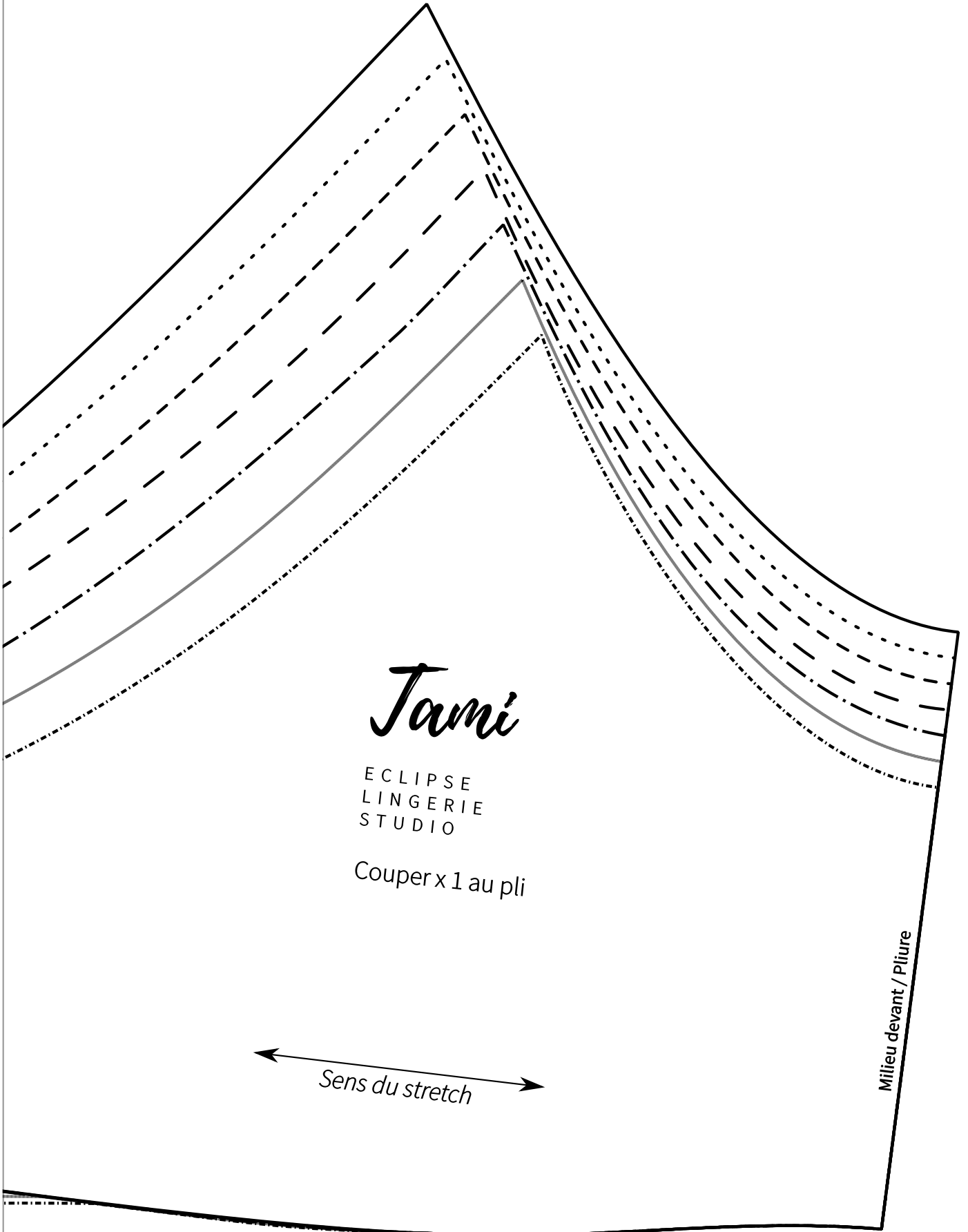


A2

A2

A3

A3



Tami

ECLIPSE
LINGERIE
STUDIO

Couper x 1 au pli

↔ Sens du stretch ↔

Milieu devant / Pliure

A3

A3