



Corinne Culture

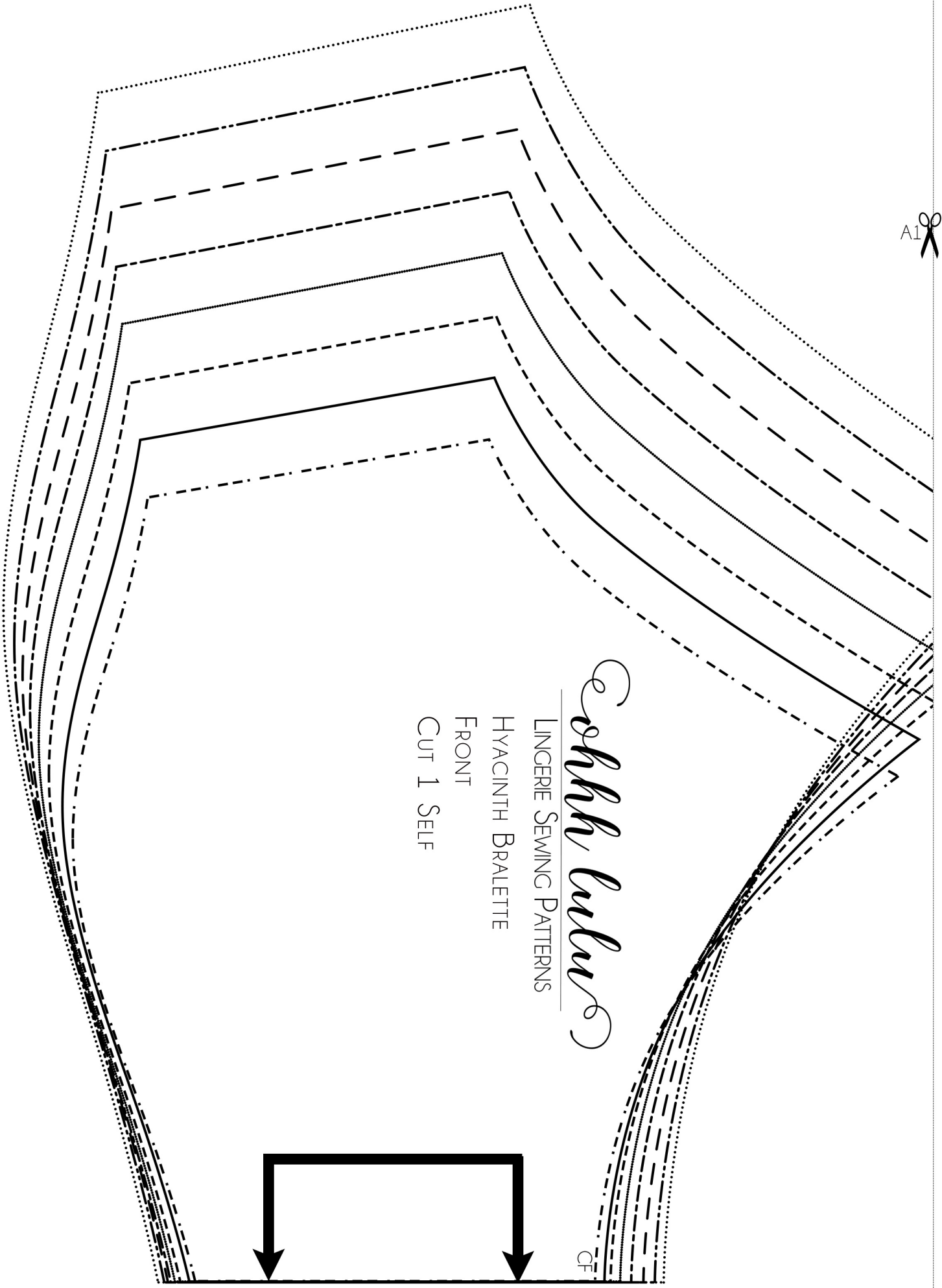
LINGERIE SEWING PATTERNS

HYACINTH BRALETTE

FRONT

CUT 1 SELF

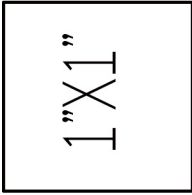
CF



Ohhh Lulu

LINGERIE SEWING PATTERNS

- 2X Small - 32-33" Bust
- _____ 1X Small - 34-35" Bust
- Small - 36-37" Bust
- Medium - 38-39" Bust
- Large - 40-41" Bust
- 1X Large - 42-43" Bust
- 2X Large - 44-45" Bust
- 3X Large - 46-47" Bust

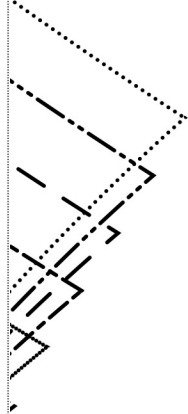


This pattern is for personal use only and is not to be used for commercial production. Comments made from this pattern cannot be sold as your own designs. No part of this pattern is to be reproduced or resold in any format.

As with any sewing pattern, always sew a mock-up first to test the fit and make any alterations.

1/2" Seam Allowances included unless otherwise indicated.

©Ohhh Lulu, 2018.



CB

Ohhh Lulu

LINGERIE SEWING PATTERNS

HYACINTH BRALETTE

BACK

CUT 1 SELF

